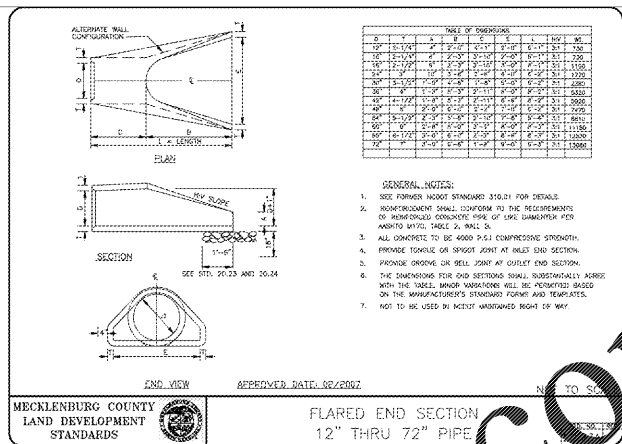
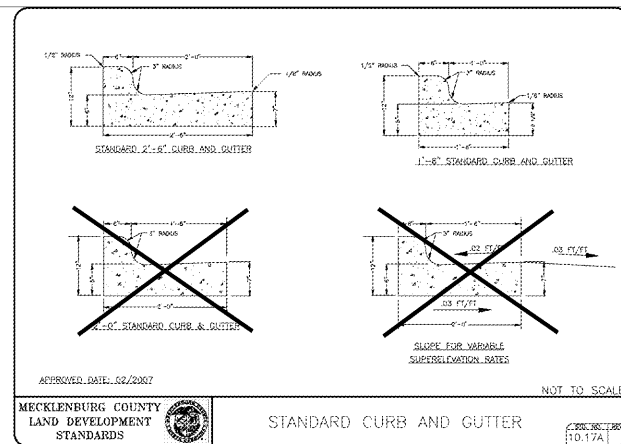


THIS SPACE INTENTIONALLY LEFT BLANK

THIS SPACE INTENTIONALLY LEFT BLANK



N.T.S. 16

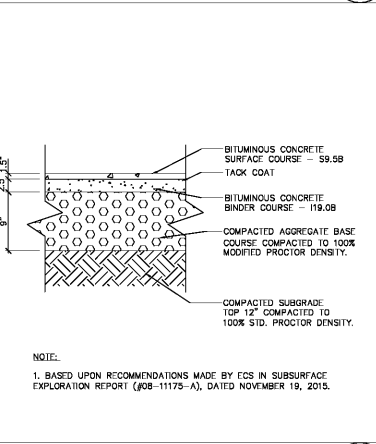
N.T.S. 12

N.T.S. 8

N.T.S. 4

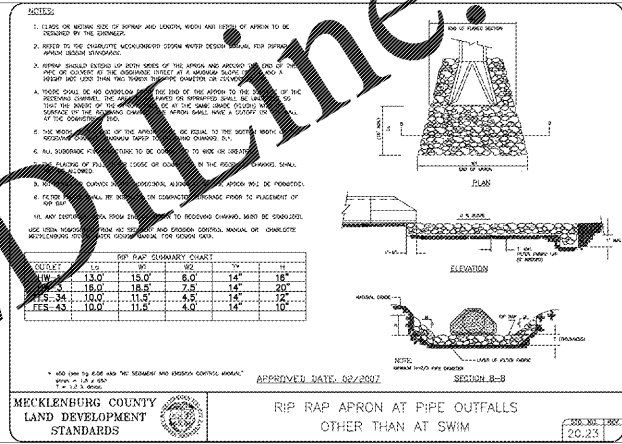
STANDARD CURB AND GUTTER

FLARED END SECTION



DIRECTIONAL ACCESSIBLE RAMP

N.T.S. 7

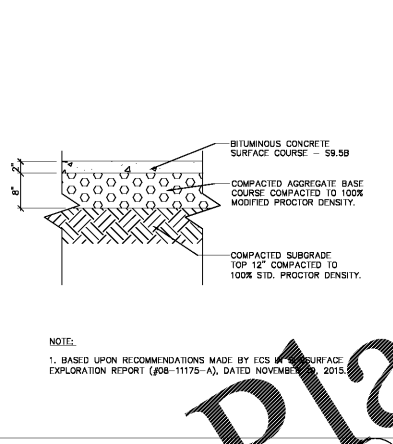
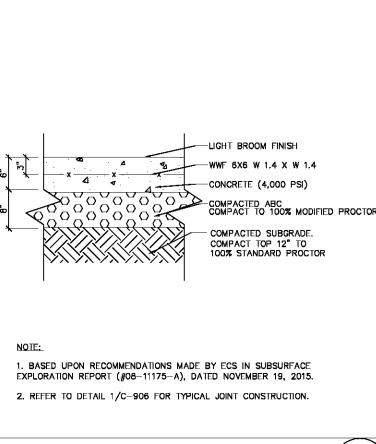


RIP RAP APRON

N.T.S. 3

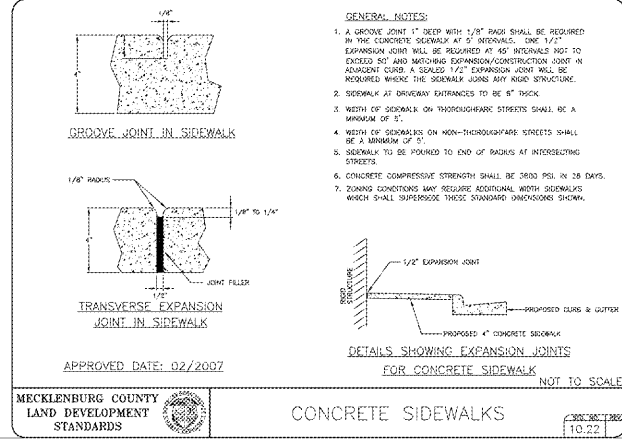
HEAVY-DUTY ASPHALT PAVING

N.T.S. 11



PARKING STANDARDS

N.T.S. 6

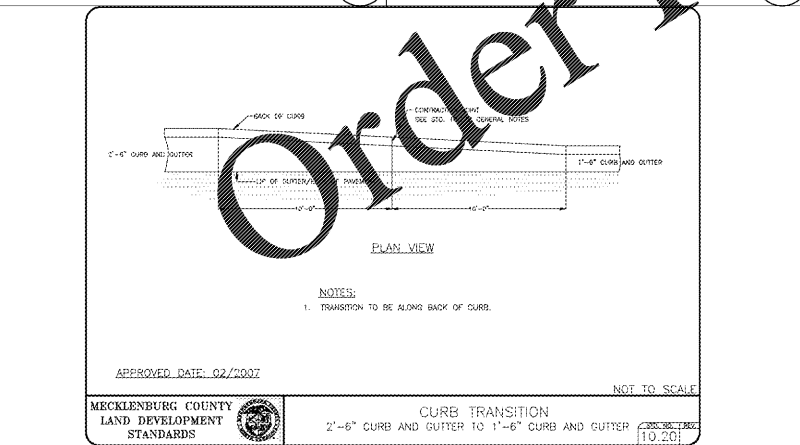


CONCRETE SIDEWALKS

N.T.S. 2

HEAVY DUTY CONCRETE

N.T.S. 10

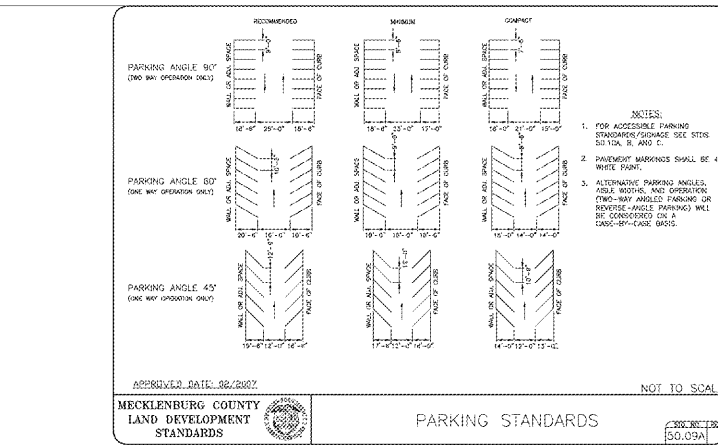


CURB TRANSITION

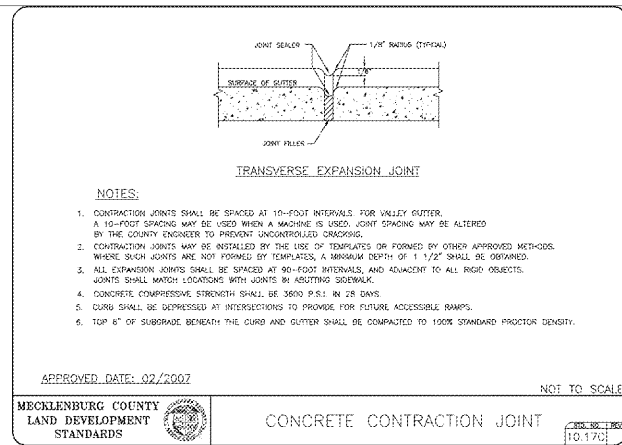
N.T.S. 9

PARKING STANDARDS

N.T.S. 5



PARKING STANDARDS



CONCRETE CONTRACTION JOINT

N.T.S. 1

**ColeJenest & Stone**

Shaping the Environment  
Realizing the Possibilities

Land Planning  
Landscape Architecture  
Civil Engineering  
Urban Design

100 South Tryon Street, Suite 1400  
Charlotte, North Carolina 28202

PH 704.375.1555 FX 704.375.7851  
WWW.COlejENESTANDSTONE.COM

CHARTER CORNELIUS, LP

75 Holly Hill Lane, Suite 305  
Greenwich  
Connecticut 06830

ONE NORMAN

20101 West Catawba Avenue  
Cornelius  
North Carolina 28031

SITE DETAILS

Project No.  
4493  
Issued  
03/26/19

Revised

Professional Engineer Seal for David S. McAlister, License No. 20351, State of North Carolina, expires 09/19/19.

Professional Engineer Seal for David S. McAlister, License No. 042053, State of North Carolina, expires 09/19/19.

C-802

The drawings, the project manual and the design shown thereon are instruments of ColeJenest & Stone, P.A. The reproduction or unauthorized use of the documents without consent of ColeJenest & Stone, P.A. is prohibited.