

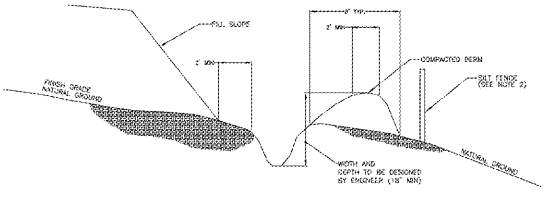
DITCH	DEPTH (FEET)	DEPTH (FEET)	RIM WIDTH	TOP WIDTH	MINIMUM	GRAVEL PATTERNS
1	2.13	1.50'	1.50'	10.50'	SC150	E
2	0.95	1.50'	1.50'	10.50'	SC150	E
3	1.11	1.50'	1.50'	10.50'	SC150	E
4	3.88	1.50'	1.50'	10.50'	SC150	E
5	0.78	1.50'	1.50'	10.50'	SC150	E
6	2.55	1.50'	1.50'	10.50'	SC150	E

NOTE: THE EROSION CONTROL MAT SHALL BE A MINIMUM DEPTH OF 1/8" FROM BOTTOM OF CHANNEL. NORTH AMERICAN GREEN PRODUCT INDICATED EQUIVALENT ALTERNATE PRODUCTS MAY BE SUBSTITUTED IF DIFFERENT FROM TYPICAL SECTION. USE VALUE LISTED IN THE TABLE.

- NOTES:
- REFER TO GRADING AND/OR EROSION CONTROL PLANS FOR SLOPE OF DITCHES.
 - PLANT GRASS IN SWALE PER PLANS.
 - ALL NUMBERED DITCHES ARE FOR EROSION CONTROL PHASES ONLY.

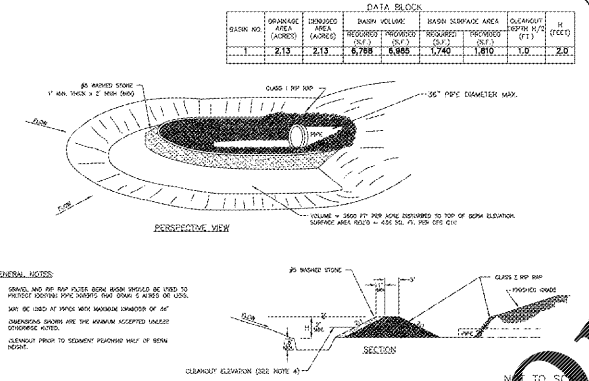
SILT DITCH DIMENSIONS

N.T.S. 12



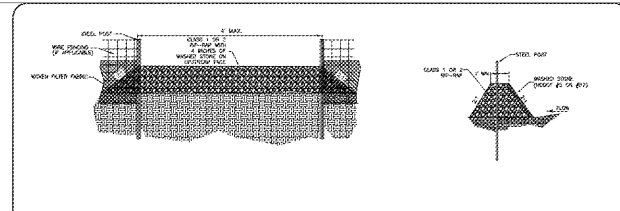
MECKLENBURG COUNTY LAND DEVELOPMENT STANDARDS TEMPORARY SILT DITCH

N.T.S. 8



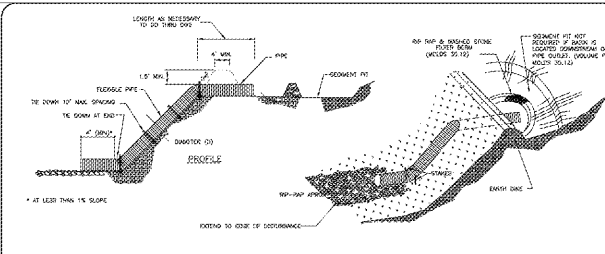
MECKLENBURG COUNTY LAND DEVELOPMENT STANDARDS GRAVEL AND RIP RAP FILTER BERM BASIN

N.T.S. 4



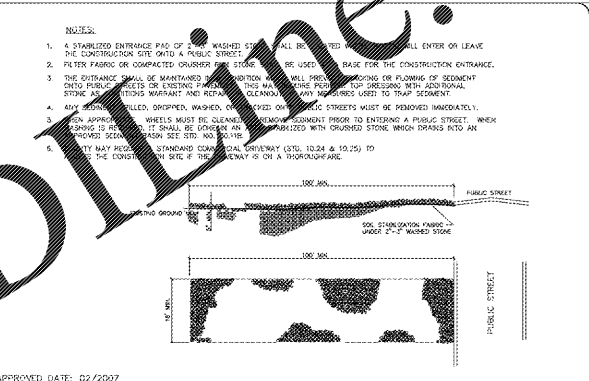
MECKLENBURG COUNTY LAND DEVELOPMENT STANDARDS SILT FENCE OUTLET OPTION 1

N.T.S. 11



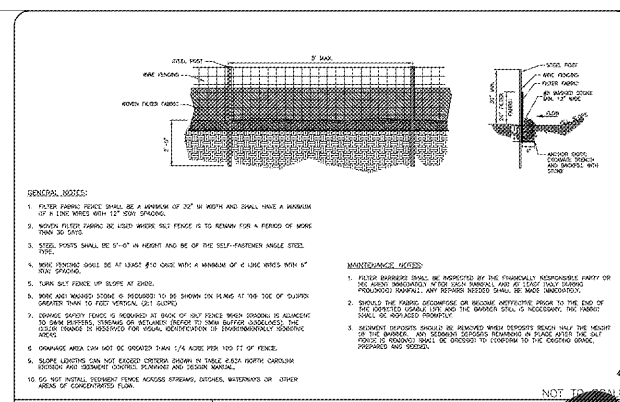
MECKLENBURG COUNTY LAND DEVELOPMENT STANDARDS FLEXIBLE PIPE SLOPE DRAIN

N.T.S. 7



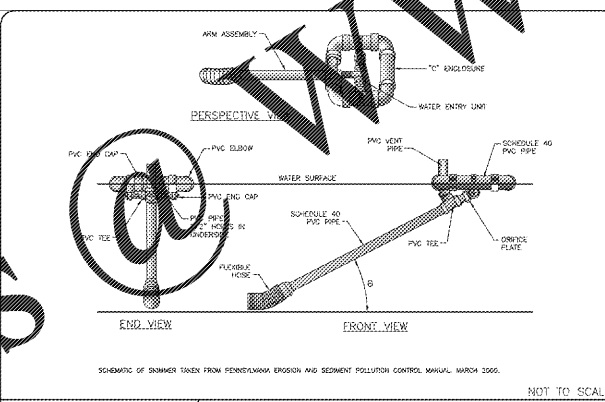
MECKLENBURG COUNTY LAND DEVELOPMENT STANDARDS STABILIZED CONSTRUCTION ENTRANCE

N.T.S. 3



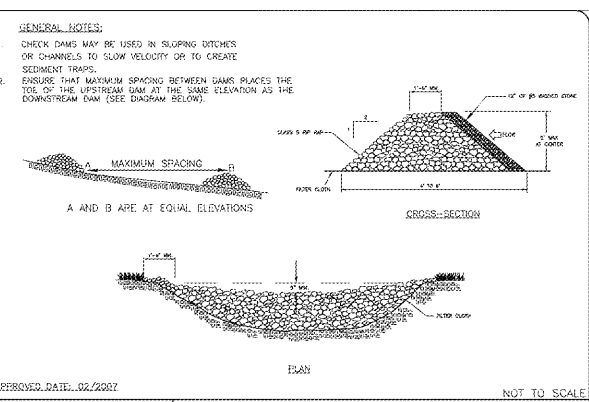
MECKLENBURG COUNTY LAND DEVELOPMENT STANDARDS HIGH HAZARD TEMPORARY SILT FENCE

N.T.S. 10



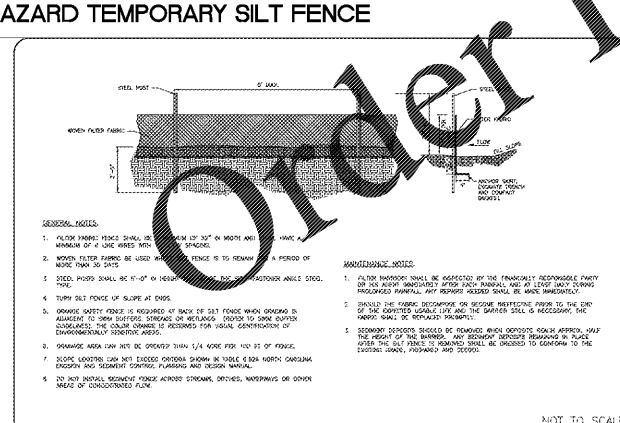
MECKLENBURG COUNTY LAND DEVELOPMENT STANDARDS SKIMMER

N.T.S. 6



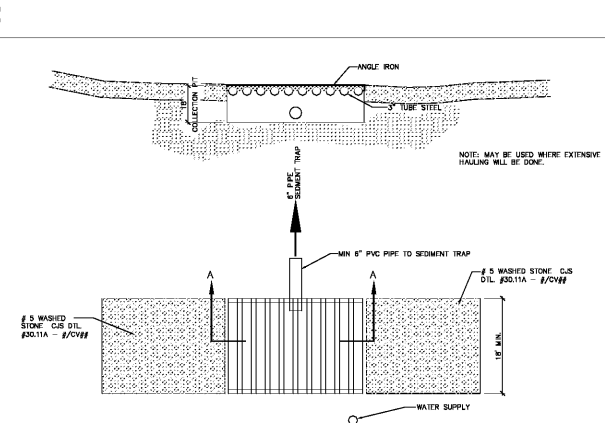
MECKLENBURG COUNTY LAND DEVELOPMENT STANDARDS TEMPORARY ROCK CHECK DAM

N.T.S. 2



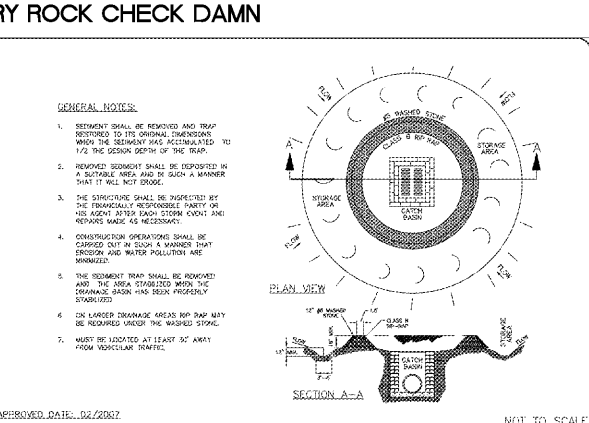
MECKLENBURG COUNTY LAND DEVELOPMENT STANDARDS TEMPORARY SILT FENCE

N.T.S. 9



MECKLENBURG COUNTY LAND DEVELOPMENT STANDARDS CONSTRUCTION ENTRANCE TRUCK TIRE WASH

N.T.S. 5



MECKLENBURG COUNTY LAND DEVELOPMENT STANDARDS STONE INLET PROTECTION

N.T.S. 1

TEMPORARY SILT FENCE

TRUCK TIRE WASH

STONE INLET PROTECTION



Shaping the Environment
Realizing the Possibilities

- Land Planning
Landscape Architecture
Civil Engineering
Urban Design

100 South Tryon Street, Suite 1400
Charlotte, North Carolina 28202
PH 704.375.1555 F 704.375.7851
www.colejeneststone.com

CHARTER CORNELIUS, LP

75 Holly Hill Lane, Suite 305
Greenwich
Connecticut 06830

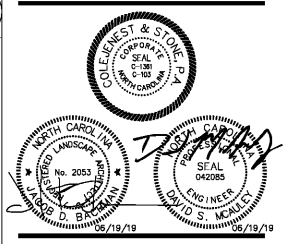
ONE NORMAN

20101 West Catawba Avenue
Cornelius
North Carolina 28031

SITE DETAILS

Project No.
4493
Issued
03/26/19

Revised



C-800

The drawings, the project manual and the design shown thereon are instruments of ColeJenest & Stone, P.A. The reproduction or unauthorized use of the documents without consent of ColeJenest & Stone, P.A. is prohibited.

ColeJenest & Stone, P.A. 2019