

VICINITY MAP
 NTS
 SURVEY DISCLAIMER
 ALTA/NSPS LAND TITLE SURVEY ISSUE NOVEMBER 01, 2017. PROVIDED BY ATLAS SURVEYING, L.P. PINEVILLE, NORTH CAROLINA. PHONE: 980-949-8472. WWW.ATLAS-SURVEYING.COM



ColeJenest & Stone
 Shaping the Environment
 Realizing the Possibilities
 Land Planning
 Landscape Architecture
 Civil Engineering
 Urban Design
 200 South Tryon Street, Suite 1400
 Charlotte, North Carolina 28202
 #704.376.1555 #704.376.7851
 www.colejeneststone.com

CHARTER CORNELIUS, LP

75 Holly Hill Lane, Suite 305
 Greenwich
 Connecticut 06830

ONE NORMAN

20101 West Catawba Avenue
 Cornelius
 North Carolina 28031

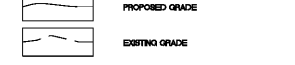
NCDOT ROADWAY IMPROVEMENTS - SECTIONS

Project No.
 4493
 Issued
 03/26/19

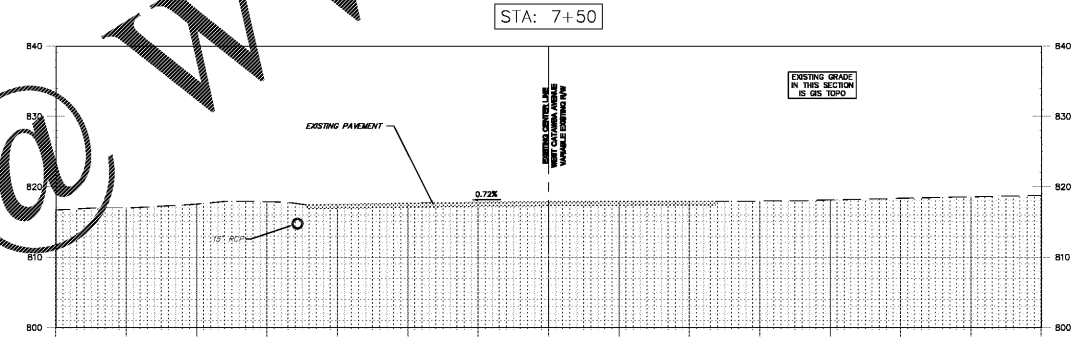
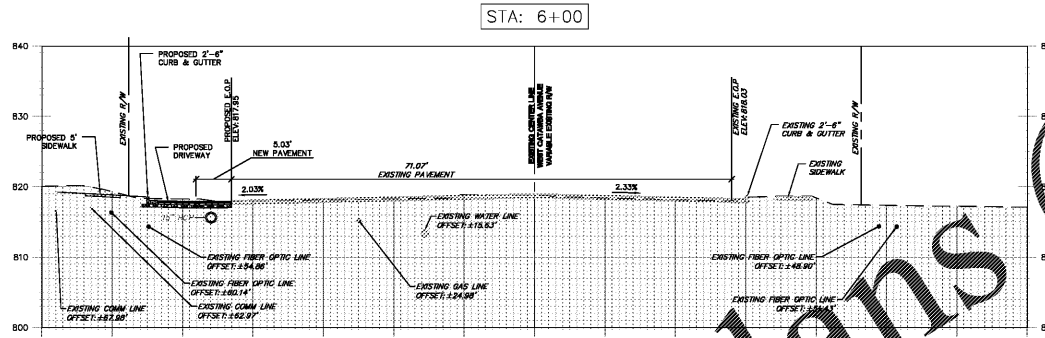
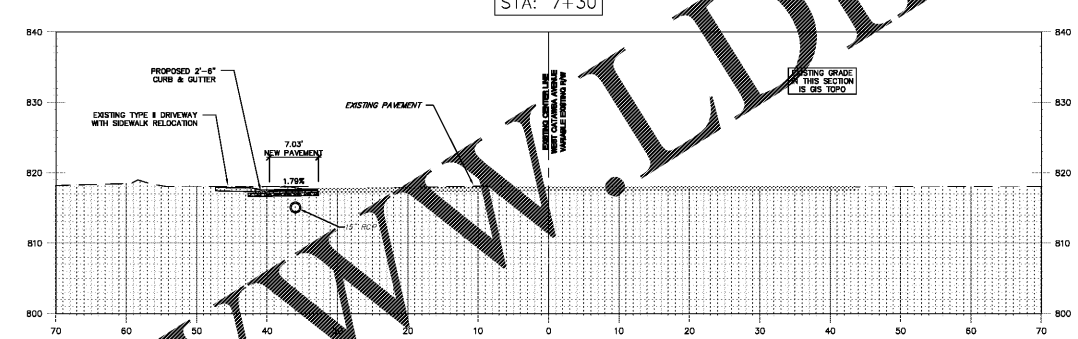
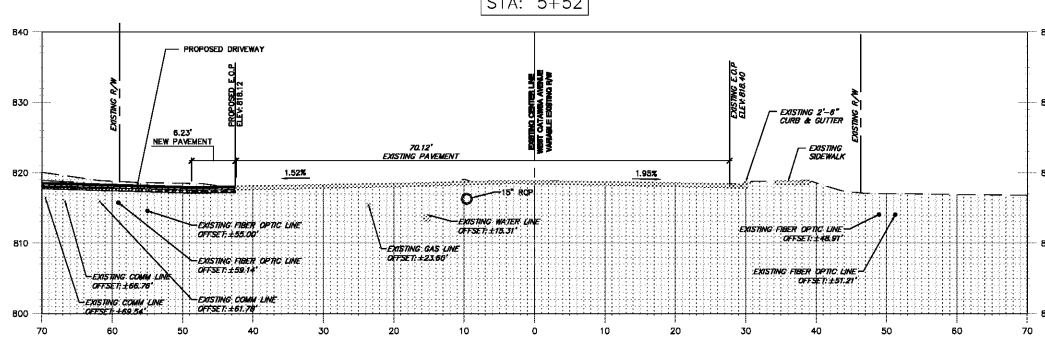
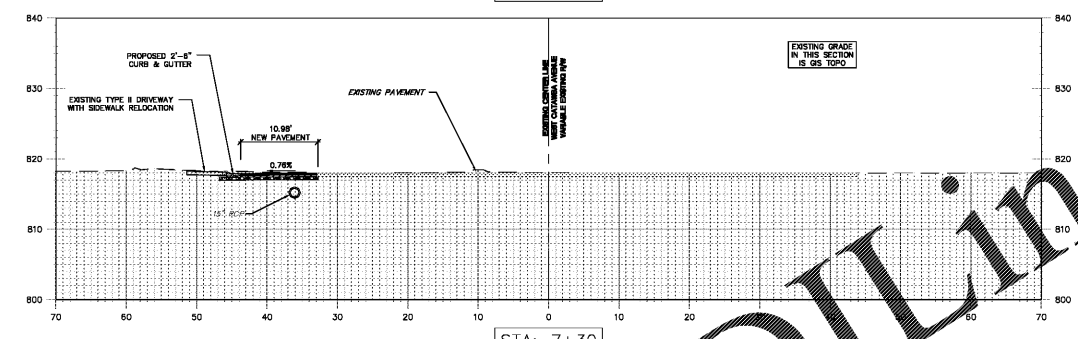
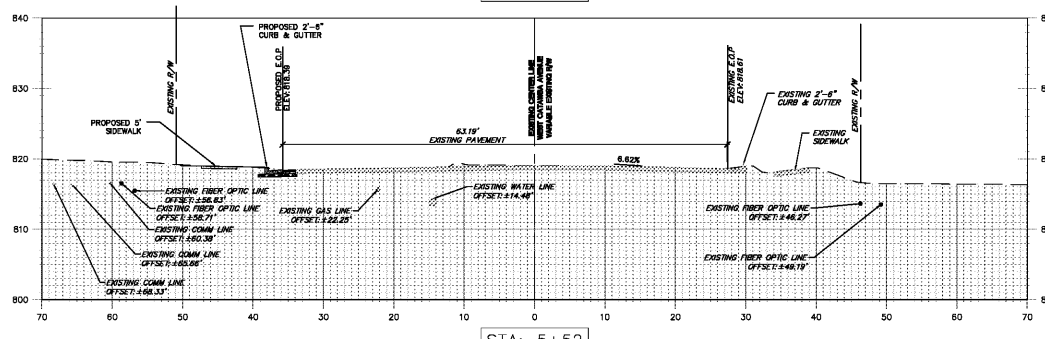
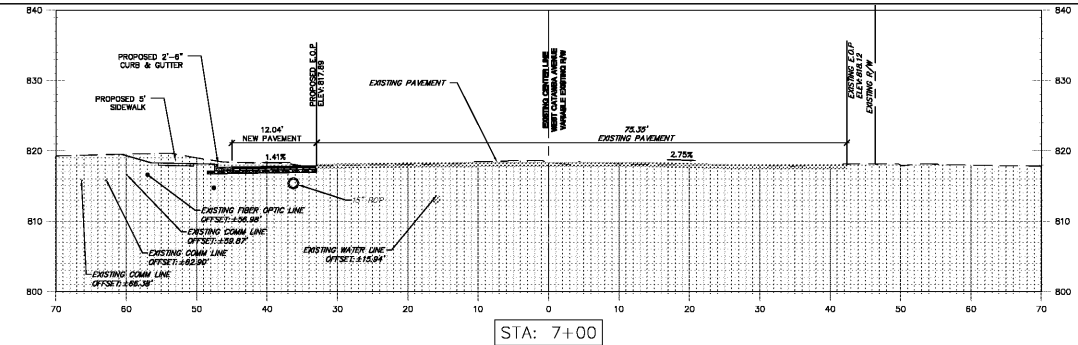
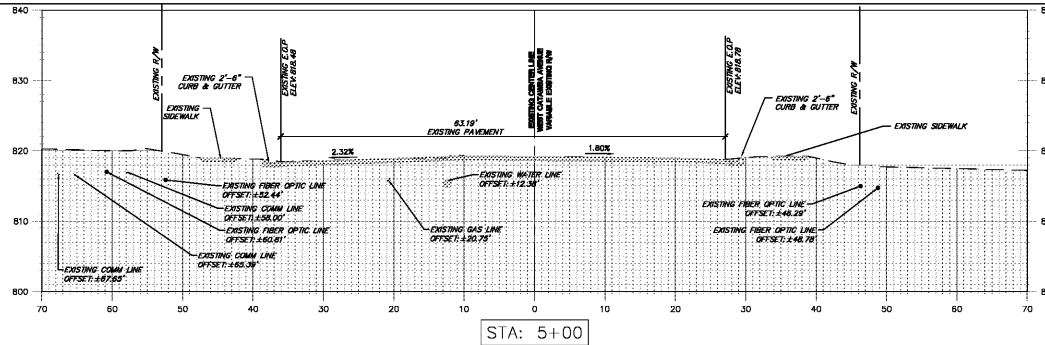
Revised

- NOTES:**
 1. SEE SHEET C-611 FOR TYPICAL PAVEMENT SECTION FOR IMPROVEMENTS MADE WITHIN THE NCDOT RIGHT OF WAY.
 2. UTILITY DEPTHS TO BE FIELD VERIFIED BY CONTRACTOR. SECTION DISPLAYS ARE APPROXIMATE ELEVATIONS.

SECTION VIEW:
 SCALE: T = 1" = 40' V = 1" = 10'



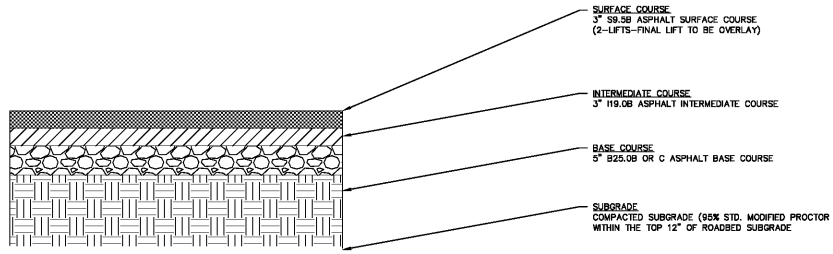
SYMBOL	DETAIL
	PROPOSED 2' SIDEWALK NCDOT 848.01
	PROPOSED 2'-8" CURB & GUTTER NCDOT 848.01
	EXISTING GAS LINES -/-
	EXISTING COMM LINES -/-
	EXISTING PAVEMENT -/-
	PROPOSED CURB INLET NCDOT 840.02
	PROPOSED STORM DRAINAGE 4/C-902
	PROPOSED MINOR CONTOUR -/-
	PROPOSED INDEX CONTOUR -/-



SECTION VIEWS STA 0+00 TO STA

SCALE 1"=10' (H) + 1"=10' (V)

Order Plans



- SURFACE COURSE
3" 59.58 ASPHALT SURFACE COURSE
(2-LIFTS-FINAL LIFT TO BE OVERLAY)
- INTERMEDIATE COURSE
3" 119.08 ASPHALT INTERMEDIATE COURSE
- BASE COURSE
5" 825.08 OR C ASPHALT BASE COURSE
- SUBGRADE
COMPACTED SUBGRADE (95% STD. MODIFIED PROCTOR WITHIN THE TOP 12" OF ROADBED SUBGRADE)

TYPICAL PAVEMENT SECTION

SCALE NTS

- CONTRACTOR IS FULLY RESPONSIBLE FOR CONTACTING APPROPRIATE PARTIES AND ASSURING THAT EXISTING UTILITIES ARE LOCATED PRIOR TO CONSTRUCTION.
- CONTRACTOR IS RESPONSIBLE FOR PLACING BARRICADES USING FLAG MEN, ETC. AS NECESSARY TO INSURE SAFETY TO THE PUBLIC.
- ALL PAVEMENT CUTS, CONCRETE OR ASPHALT, ARE TO BE REPLACED ACCORDING TO STANDARDS OF THE NORTH CAROLINA DEPARTMENT OF TRANSPORTATION AND CHARLOTTE-MECKLENBURG UTILITIES SPECIFICATIONS.
- SHORING SHALL BE IN ACCORDANCE WITH OSHA TRENDING STANDARDS, 29 CFR, PART 1926, SUBPART P, OR AS AMENDED.

C-611

The drawings, the project manual and the design shown thereon are instruments of ColeJenest & Stone, P.A. The reproduction or unauthorized use of the documents without consent of ColeJenest & Stone, P.A. is prohibited.
 ColeJenest & Stone, P.A. 2019

