

**VICINITY MAP**  
 SITE  
 WEST CATAWBA AVENUE  
 ONE NORMAN BOULEVARD

**LEGEND**

SYMBOL	DETAIL
[Symbol]	CONCRETE TO BE REMOVED
[Symbol]	PAVEMENT TO BE REMOVED
[Symbol]	TREE TO BE REMOVED
[Symbol]	SLIT FENCE
[Symbol]	TREE PROTECTION FENCING
[Symbol]	HIGH HAZARD SLIT FENCE
[Symbol]	DENUDED LIMIT
[Symbol]	OVERHEAD ELECTRIC LINE TO BE REMOVED
[Symbol]	STORM DRAIN TO BE REMOVED

**ColeJenest & Stone**  
 Shaping the Environment  
 Realizing the Possibilities

Land Planning  
 Landscape Architecture  
 Civil Engineering  
 Urban Design

200 South Tryon Street, Suite 1400  
 Charlotte, North Carolina 28202  
 #704.376.1555 #704.376.7851  
 www.colejeneststone.com

**CHARTER CORNELIUS, LP**

75 Holly Hill Lane, Suite 305  
 Greenwich  
 Connecticut 06830

**ONE NORMAN**

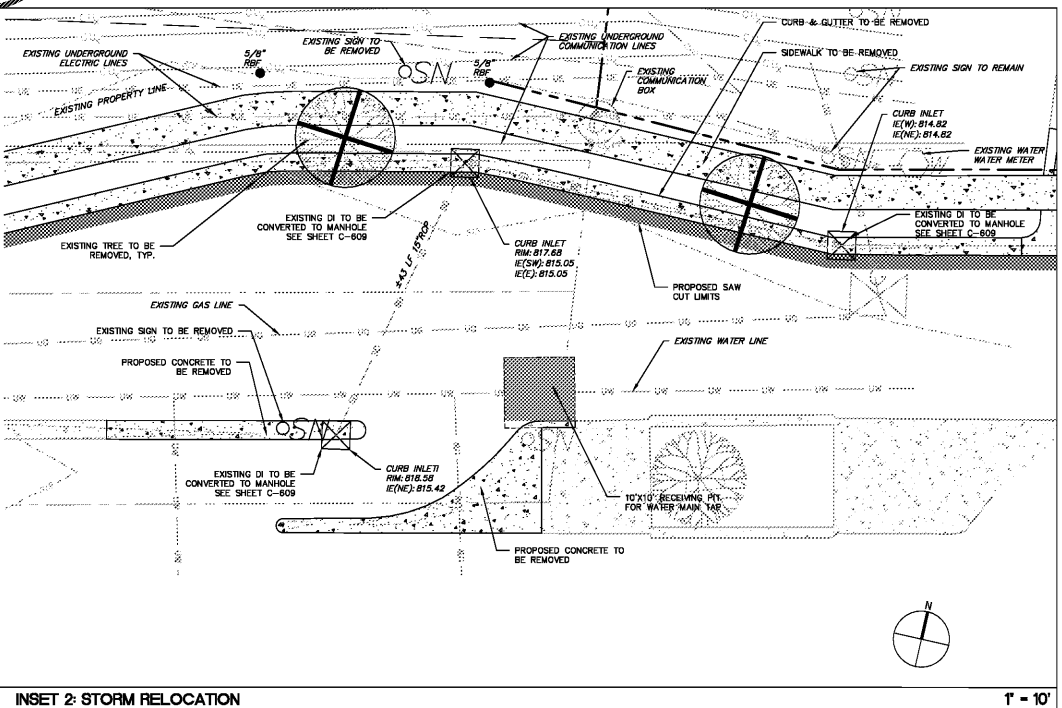
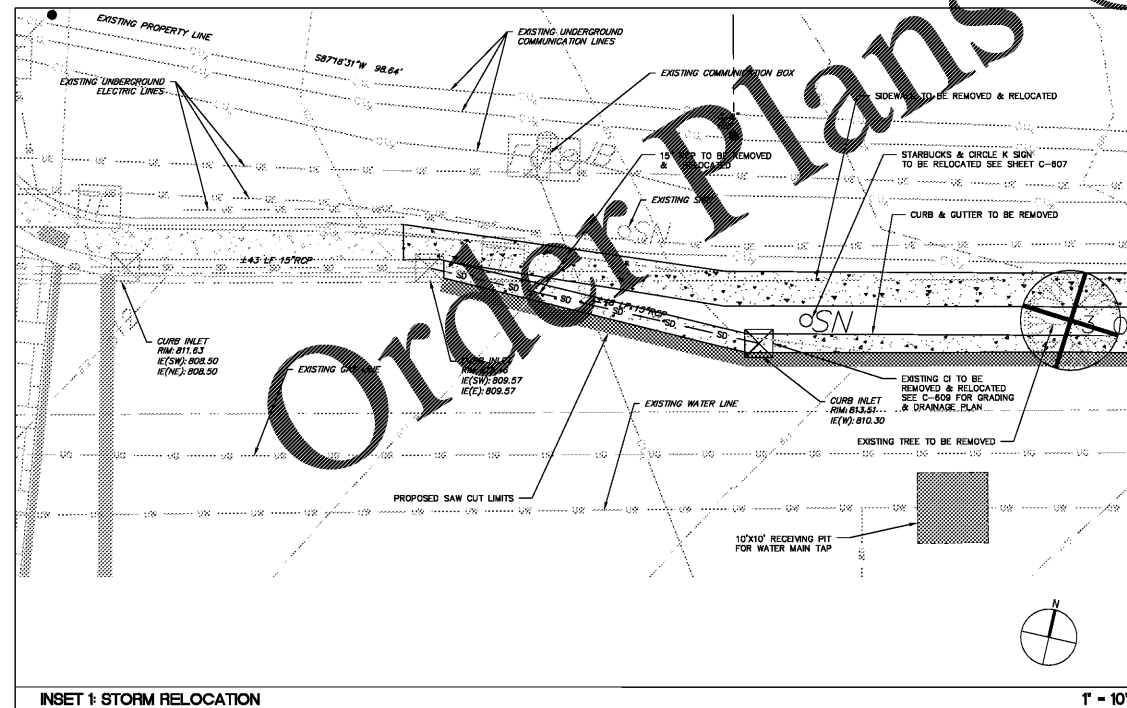
20101 West Catawba Avenue  
 Cornelius  
 North Carolina 28031

**NCDOT ROADWAY IMPROVEMENTS - DEMOLITION PLAN**

Project No.  
 4493

Issued  
 03/28/19

Revised



Order Plans

www.LDILine.com

- CONTRACTOR IS FULLY RESPONSIBLE FOR CONTACTING APPROPRIATE PARTIES AND ASSURING THAT EXISTING UTILITIES ARE LOCATED PRIOR TO CONSTRUCTION.
- CONTRACTOR IS RESPONSIBLE FOR PLACING BARRICADES USING FLAG MEN, ETC. AS NECESSARY TO INSURE SAFETY TO THE PUBLIC.
- ALL PAVEMENT CUTS, CONCRETE OR ASPHALT, ARE TO BE REPLACED ACCORDING TO STANDARDS OF THE NORTH CAROLINA DEPARTMENT OF TRANSPORTATION AND CHARLOTTE-MECKLENBURG UTILITIES SPECIFICATIONS.
- SHORING SHALL BE IN ACCORDANCE WITH OSHA TRENDING STANDARDS, 29 CFR, PART 1926, SUBPART P, OR AS AMENDED.

**COLEJENEST & STONE, P.A.**  
 ENGINEER  
 DAVID S. MCNEELY  
 042085  
 03/28/19

SCALE: 1"=40'  
 0 20' 40' 80'

**C-606**

The drawings, the project manual and the design shown thereon are instruments of ColeJenest & Stone, P.A. The reproduction or unauthorized use of the documents without consent of ColeJenest & Stone, P.A. is prohibited.

ColeJenest & Stone, P.A. 2019