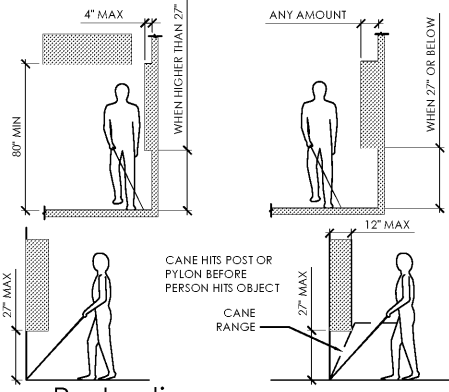
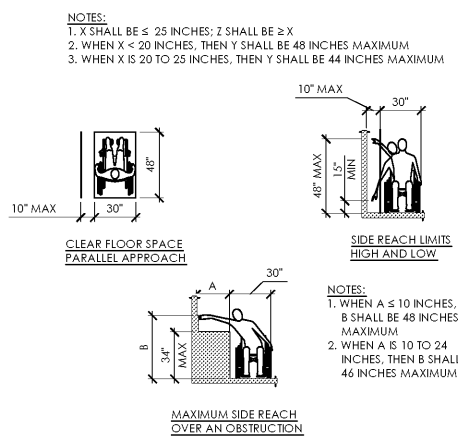
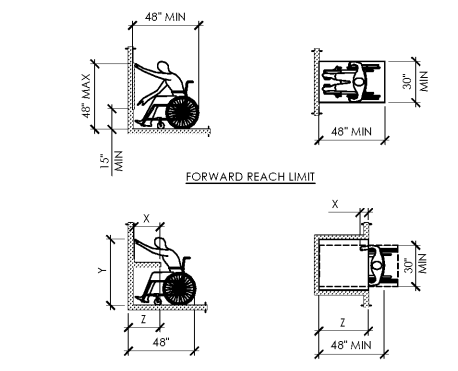


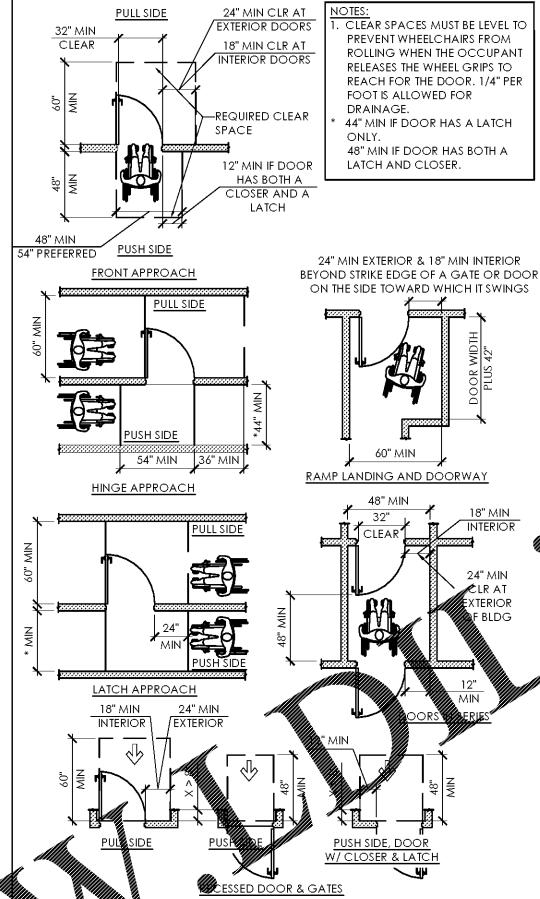
16 Threshold Requirements
ANSI A117.1 #404.2.4, 302 & 303



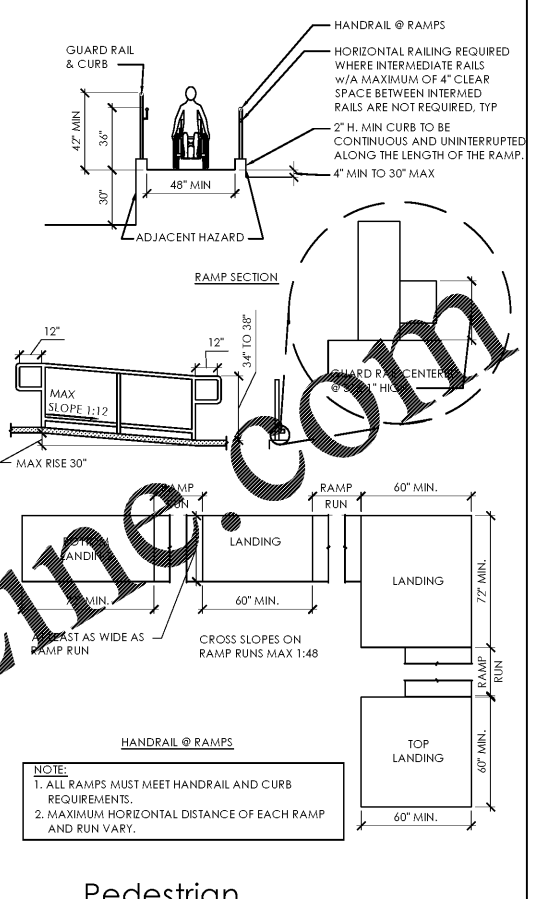
15 Protruding Overhanging Objects
ANSI A117.1 #307.2, 307.3, 307.4 & 307.5



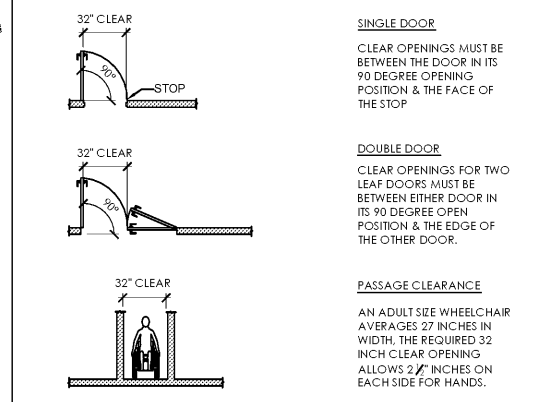
11 Reach Ranges
ANSI A117.1 #308



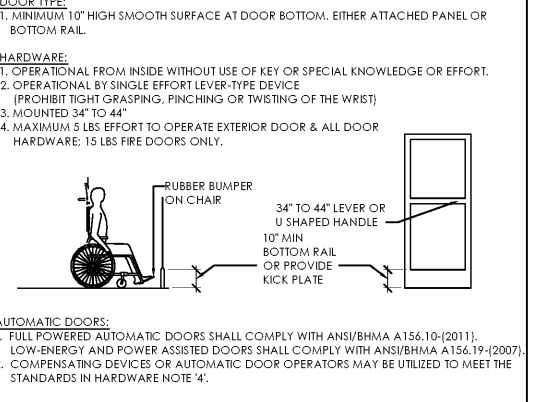
7 Door Clearances
ANSI A117.1 #404.2.3.2; 404.3.4



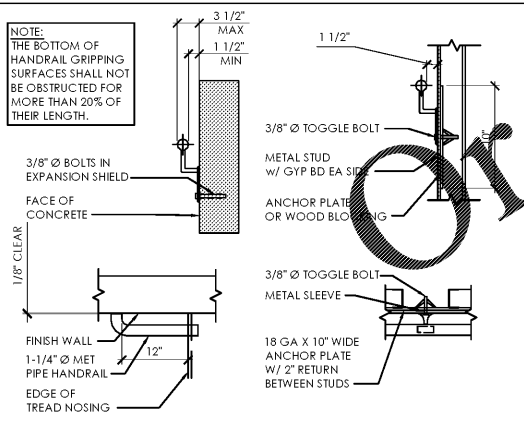
3 Pedestrian Ramp Requirements
ANSI A117.1 #405



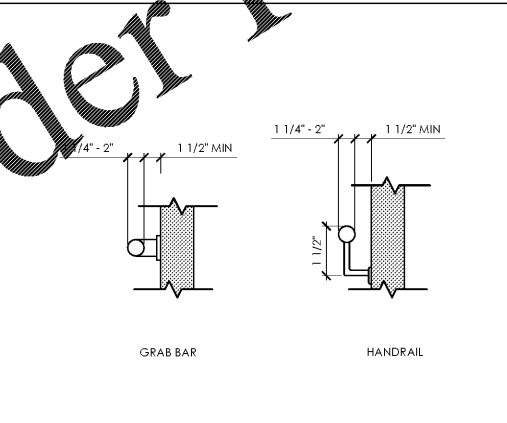
6 Door Widths
ANSI A117.1 #403.5; 404.2.1 & 404.2.2



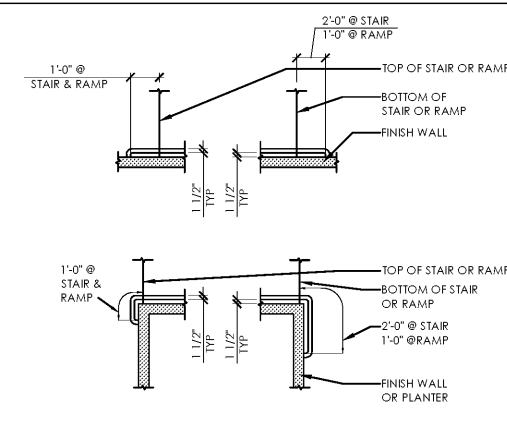
2 Door Requirements
ANSI A117.1 #404.2.6; 404.2.8; 404.3



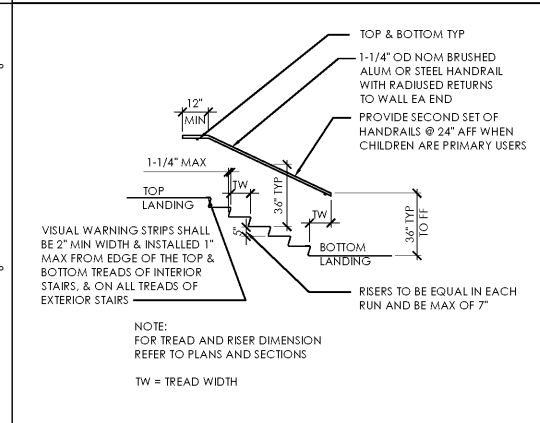
17 Railing Requirements
ANSI A117.1 #505



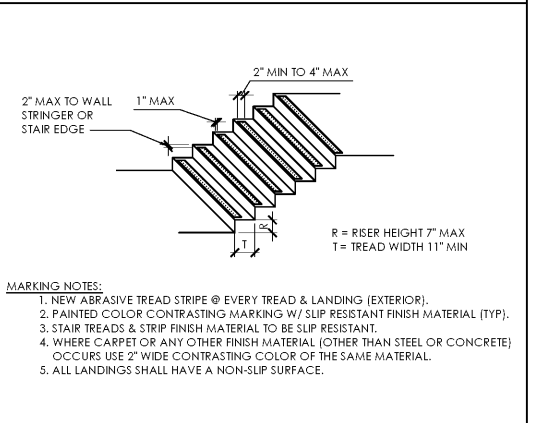
13 Railing Requirements
ANSI A117.1 #505



9 Stair/Ramp Railings
ANSI A117.1 #505



5 Stair/Railing
ANSI A117.1 #505



1 Stair Requirements
ANSI A117.1 #504

Issued:	Date:
A Client Review Set	05/07/19
B Permit Set	06/12/19
C Client Review Set	02/07/20
D Bid Set	02/10/20
Revisions:	Date:

DO NOT SCALE PLANS
Copying, Printing, Software and other processes required to produce these prints can stretch or shrink the actual paper or layout. Therefore, scaling of this drawing may be inaccurate. Contact us consultants with any need for additional dimensions or clarifications.

ms consultants, inc.
engineers, architects, planners
5444 Wade Park Blvd.
Suite 160
Raleigh, NC 27607-4299
phone 919.772.5565
fax 919.779.2308

DRAWN BY: KKL
REVIEWED BY: NAL

Seal
PROFESSIONAL OF RECORD:
CHARLES M. BUSCH No. 14751
EXP. DATE: 06/30/2020

ALDI Inc.
1985 Old Union Church Road
Salisbury, NC 28146
(704) 642-0002
(704) 642-0078 fax

ALDI Inc. Store #: 154
Cornelius, NC
20101 West Catawba Avenue
Cornelius, NC 28031
Mecklenburg County
Project Name & Location:

Accessibility Details Drawing Name:	Project No. 40452-07
Prototype Rls. 12/10/18	
Type: LHSD-V8ER	
	ACC-001
Scale: As Noted	Drawing No.