

**ELECTRICAL SCHEDULES**

ITEM#	QTY	DESCRIPTION	110-127V/PH/60HZ	AMPS	AFF. (IN)	ELECTRICAL_REMARKS
10.02	1	12 V SODA SYSTEM W/ICE	115V/1/60HZ	5.2	18	-
11.03	3	CARBONATOR, HIGH VOLUME	115V/1/60HZ	7.2	84	-
11.04	1	DROP IN DISPENSER 8V CB2323	115V/1/60HZ	1.5	18	-
14.00	1	FROZEN COKE MACHINE	VERIFY	VERIFY	VERIFY	VERIFY UTILITY REQUIREMENTS WITH OWNER PROVIDED EQUIPMENT
15.09	1	SHAKE & SOFT SERVE	VERIFY	VERIFY	VERIFY	VERIFY UTILITY REQUIREMENTS WITH OWNER PROVIDED EQUIPMENT
16.54	2	ICE MACHINE 882LB	208-230V/1/60HZ	11	60	15A MAX. FUSE SIZE
16A.51	2	REMOTE CONDENSER	208-230V/1/60HZ	10	-	15A MAX. FUSE SIZE/POWER SUPPLY FOR REMOTE CONDENSER DRAWN FOR ICE MAKER, EC TO CONNECT / VERIFY LOCATION OF REMOTE CONDENSER
17.00	1	COFFEE/ TEA BREWER	120/208V/1/60	13	50	-
21.85	1	BK MIDDLE PREP TABLE (BUN RACK)	-	-	-	EC TO PLUG TABLES TOGETHER
21.86	1	BK REAR PREP TABLE (REFRIG UNDERCOUNTER)	-	-	-	EC TO PLUG TABLES TOGETHER
21.95	1	BK FRONT PREP TABLE	120/208V/3/60HZ	125	FR/CEILING	EC TO PLUG TABLES TOGETHER AND TO CONNECT BREAKER PANEL IN TABLE TO MAIN PANEL
21C.32	1	BK EXPDITER STATION	120V/1/60HZ	6	-	CONNECT TO PRE-WIRED TO RECEPTACLE IN PREP TABLE (#21)
21C.36	1	BK ECONO LINE BEVERAGE REFRIGERATOR	120V/1/60HZ	2	-	CONNECT TO PRE-WIRED TO RECEPTACLE IN PREP TABLE (#21) 15A MAX. FUSE SIZE
23.14	1	7'-7" BROILER/OVEN HOOD ROC STORES	-	-	-	EC TO INTER-CONNECT FANS TO CONTROL PANEL AND ANSUL SYSTEM/ VERIFY WITH HOOD DRAWINGS
24.00	1	BROILER	VERIFY	VERIFY	-	VERIFY UTILITY REQUIREMENTS WITH OWNER PROVIDED EQUIPMENT
25.15	1	FREEZER, REACH-IN RH	115V/1/60HZ	6.5	48	15A DEDICATED CIRCUIT REQUIRED
26.12	1	MEAT FREEZER 44"	115V/1/60HZ	5.1	-	CORD & PLUG/ CONNECT TO RECEPTACLE PROVIDED UNDER HOOD/ REFER TO HOOD DRAWINGS
30.16	1	UNIVERSAL FRY DUMP STATION S/SNEXT GENERATION	120-208V/1/60HZ	30	18	CIRCUIT 1 FRY DUMP: (120-208V/1/60HZ, 10A, 3 WIRE + GROUND), CIRCUIT 2 PHU: (208V/1/60HZ, 12A 2 WIRE + GROUND)
31.24	1	3 VAT FRYER GAS	115V/1/60HZ	8	-	CORD & PLUG/ CONNECT TO RECEPTACLE PROVIDED UNDER HOOD/ REFER TO HOOD DRAWINGS
32.01	1	FRY FREEZER W/RACK & TRAY	115V/1/60HZ	5.3	-	CORD & PLUG/ CONNECT TO RECEPTACLE PROVIDED UNDER HOOD/ REFER TO HOOD DRAWINGS
33.16	1	5'-7" FRYER HOOD WALL MOUNT	-	-	-	EC TO CONNECT RECEPTACLES AND INTER-CONNECT FANS TO CONTROL PANEL AND ANSUL SYSTEM/ VERIFY WITH HOOD DRAWINGS
36.02	1	COMBI OVEN STEAMER ELECTRIC	208V/3/60HZ	20	-	EC TO CONNECT TO RECEPTACLE UNDER HOOD / VERIFY WITH OWNER & HOOD DRAWINGS
40.00	1	WALK-IN COOLER/FREEZER	-	-	-	VERIFY UTILITY REQUIREMENTS WITH OWNER PROVIDED EQUIPMENT
50.00	2	MICROWAVE OVEN	208-240V/1/60HZ	15.3	-	CONNECT TO PRE-WIRED TO RECEPTACLE IN EXPDITER (#21C) OR PREP TABLE (#21)
51.13	2	PHU - 3X4	208V/1/60HZ	16	-	CONNECT TO PRE-WIRED TO RECEPTACLE IN PREP TABLE (#21)
51B.13	1	PHU - 2X4	208V/1/60HZ	12	-	CONNECT TO PRE-WIRED TO RECEPTACLE IN FRY DUMP (#30)
52.00	1	EGG COOKER	208V/1/60HZ	11.4	-	CONNECT TO PRE-WIRED TO RECEPTACLE IN PREP TABLE (#21)
53.08	1	UNDERCOUNTER REFRIG	115V/1/60HZ	2.7	-	CONNECT TO PRE-WIRED TO RECEPTACLE IN PREP TABLE (#21)
53.08	1	UNDERCOUNTER REFRIG	115V/1/60HZ	4.5	18	-
53.08	1	UNDERCOUNTER REFRIG	115V/1/60HZ	2.7	18	-

**GENERAL ELECTRICAL CONTRACTOR NOTES**

- E. C. TO PROVIDE AND INSTALL RECEPTACLES, CAPS AND CORDS AS REQUIRED. CAPS AND CORDS ARE TO BE INSTALLED ACCORDING TO THE MANUFACTURER'S INSTRUCTIONS.
- E. C. TO CONNECT ELECTRICAL SERVICE DIRECTLY TO EQUIPMENT ACCORDING TO THE MANUFACTURER'S INSTRUCTIONS.
- E. C. TO RECONNECT ELECTRICAL CIRCUITS ON PREWIRED EQUIPMENT DISASSEMBLED FOR SHIPMENT.
- WHERE EQUIPMENT IS NOT PREWIRED, E. C. TO CONNECT THE ELECTRICAL SERVICE AND PROVIDE INTERWIRING AS REQUIRED.
- WHERE RECEPTACLES ARE PROVIDED WITH THE EQUIPMENT, D. C. TO PROVIDE AND INSTALL ELECTRICAL SERVICE DOWN FROM ABOVE THROUGH THE SERVICE CHASE PROVIDED WITH THE EQUIPMENT.
- H&K'S DRAWINGS INCLUDE ONLY THOSE RECEPTACLES REQUIRED FOR SPECIFIC KITCHEN EQUIPMENT. REFER TO THE ARCHITECTURAL BUILDING DRAWINGS FOR LOCATIONS OF UTILITY AND GENERAL PURPOSE RECEPTACLES.
- E. C. TO VERIFY THE UTILITY REQUIREMENTS FOR ITEMS NOT PROVIDED BY H&K.
- ALL PORTIONS OF WORK SHALL BE DONE IN ACCORDANCE WITH APPLICABLE LOCAL, STATE AND NATIONAL CODES, ORDINANCES AND STANDARDS.
- NOTIFY H&K'S PROJECT MANAGER IMMEDIATELY IF COMPLIANCE WITH A LOCAL, STATE OR NATIONAL CODE IS IN CONFLICT WITH THESE DRAWINGS.
- ELECTRICALLY OPERATED OR HEATED EQUIPMENT SHALL BEAR THE U. L. OR R. U. SEAL.
- ALL 120V CONTROL WIRING TO BE DONE BY THE E. C.
- ALL CUSTOM FABRICATION EQUIPMENT WITH FACTORY WIRING SHALL BEAR THE U. L. LABEL AND FILE NO. FOR THE ENTIRE ITEM.
- EACH DOUBLE CONVENIENCE OUTLET TO BE WIRED TO 20A BREAKER.

**WALK-IN COOLER/FREEZER ELECTRICAL CONTRACTOR NOTES**

- E. C. TO PROVIDE AND INSTALL A HEATING ELEMENT ON THE COOLER/FREEZER CONDENSATE DRAIN LINES.
- E. C. TO CONNECT THE PRIMARY ELECTRICAL SERVICE TO THE CONDENSING UNITS AND INTERWIRE TO THE EVAPORATOR COIL(S), CONTROLS, LIGHTING FIXTURES AND DOOR PERIMETER HEATERS.

**ABBREVIATIONS**

A. F. C. ABOVE FINISHED CEILING  
 A. F. F. ABOVE FINISHED FLOOR  
 A. F. R. ABOVE FINISHED ROOF  
 B. F. C. BELOW FINISHED CEILING  
 WIB WALK-IN BOX (COOLER/FREEZER)

**DISCLAIMER**  
 IMPORTANT NOTICE: TO ALL CONTRACTORS AND TRADES

THESE DRAWINGS HAVE BEEN PREPARED BY H&K INTERNATIONAL AT THE REQUEST OF THE OWNER. THE INFORMATION PROVIDED MAY BE TIME SENSITIVE AND IS SUBJECT TO CHANGE AS REVISIONS TO THE EQUIPMENT LISTING MAY HAVE OCCURRED AFTER THE RELEASE OF THIS DRAWING.

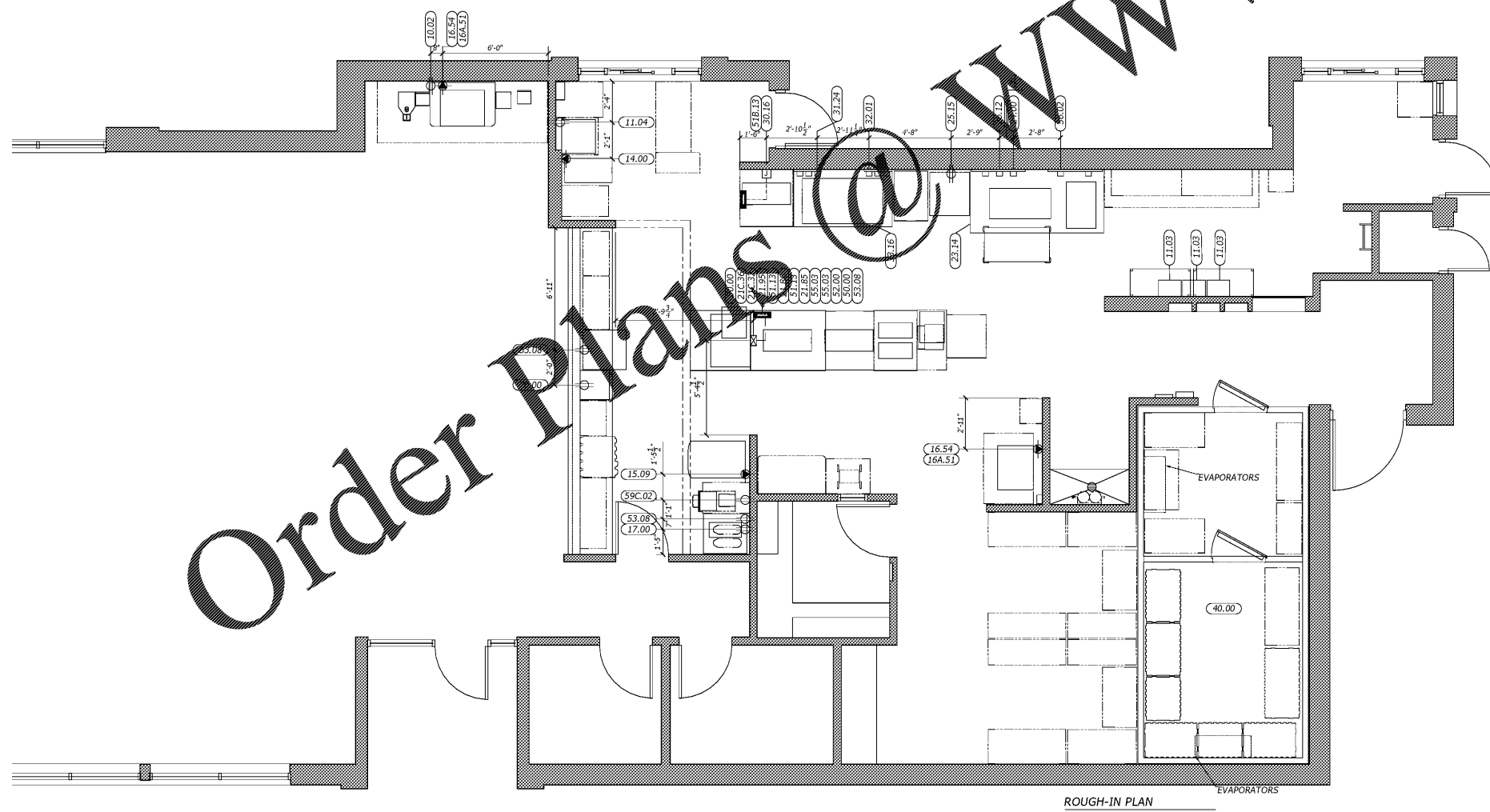
PLEASE VERIFY WITH THE OWNER THAT THE DRAWING PROVIDED REFLECTS THE MOST CURRENT INFORMATION AVAILABLE. ALSO REQUEST A LIST OF ALL OWNER SUPPLIED EQUIPMENT AND EQUIPMENT SUPPLIED BY OTHERS WITH DETAILS AND SPECIFICATIONS THAT APPLY TO THIS EQUIPMENT.

H&K INTERNATIONAL DOES NOT ASSUME RESPONSIBILITY FOR EQUIPMENT SUPPLIED BY OTHER PARTIES.

H&K INTERNATIONAL 103014

**SYMBOL LEGEND**

⊕	RECEPTACLES	▨	EXISTING FULL WALL
⊞	JUNCTION BOX	▧	EXISTING LOW WALL
⊗	EXHAUST DUCT ABOVE HOOD	▩	NEW FULL WALL
+	GAS LINE	▨	NEW LOW WALL
+	WATER LINE	⋯	OPTIONAL EQUIPMENT
+	DRAIN LINE	⋯	NEW EQUIPMENT ON EQUIPMENT PLAN
⊞	FLOOR SINK	⋯	RELOCATED EQUIPMENT ON EQUIPMENT PLAN
⊞	FLOOR DRAIN	⋯	EXISTING EQUIPMENT
		⋯	EQUIPMENT ON ROUGH-IN PLAN
		⋯	EXISTING TRUSSES
		⋯	SERVICE AREA
		⋯	NEW MENU BOARD
		⋯	VALANCE



Order Plans @

WWW.LDILine.com

BY			
REVISION			
DATE	22JAN20		
DRAWN	JJO	CHECKED	IB
SCALE			SEE PLAN
TITLE	ELECTRICAL_ROUGH_INS		
CUSTOMER	BURGER-KING CORPORATION		
STORE NO.	00636	SHEET	3 OF 4
			K-3