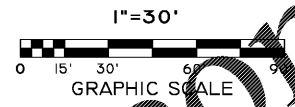


DATE	REVISIONS

JOB NO:	19GPS01
FILE NAME:	19GPS01.DWG
DATE:	
DATE DRAWN:	T.T.
CHECKED:	DAR
SCALE:	1"=30'
SHEET	C5

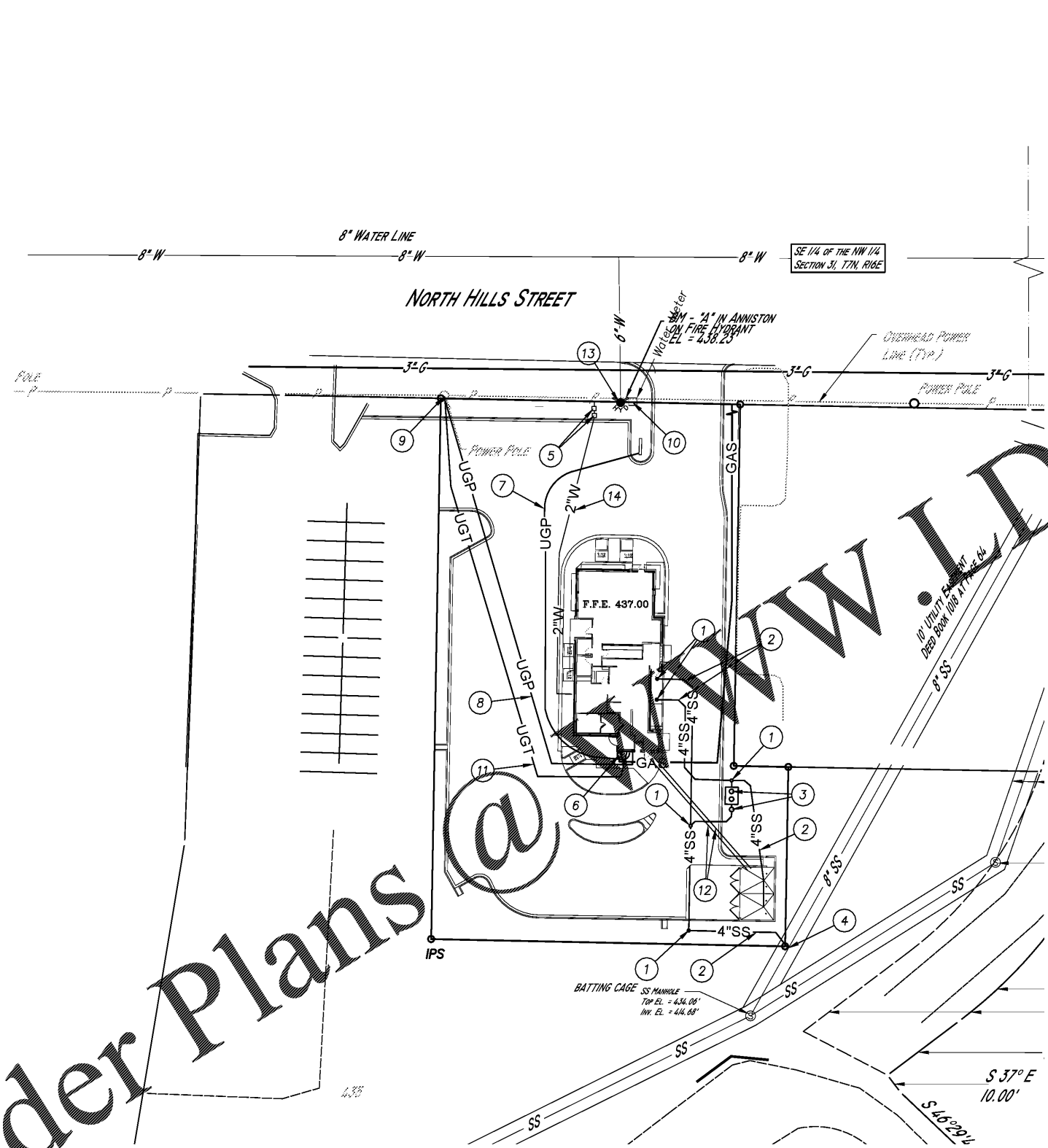


UTILITY LEGEND

- 1 SANITARY SEWER CLEANOUT REQ'D.-TYPICAL SEE DETAIL.
- 2 4" P.V.C. 40 SANITARY SEWER SERVICE LATERAL REQUIRED @ 2.0% MIN. GRADE.
- 3 2500 GALLON PRE-CAST GREASE INTERCEPTOR WITH SAMPLING PORT REQUIRED. SEE DETAIL.
- 4 TIE TO EXISTING SANITARY SEWER MAIN PER CITY OF MERIDIAN REQUIREMENTS.
- 5 2" DOMESTIC WATER METER AND 2" WAITS MODEL 007M1Q7 DOUBLE CHECK VALVE IN BOX WITH LID WITH 2" PVC SCHED 40 WATER LINE.
- 6 PROPOSED LOCATION FOR GAS METER. CONTRACTOR TO CONTACT, COORDINATE AND ASSIST LOCAL GAS SERVICE PROVIDER AS NEEDED FOR GAS SERVICE TO BUILDING.
- 7 1.25" CONDUIT WITH 200# PULL WIRE FOR POWER TO PRIMARY IDENTIFICATION SIGN.
- 8 (2) 5" PVC CONDUITS WITH 200# PULL WIRE FOR UNDERGROUND POWER SERVICE. CONTRACTOR TO CONTACT, COORDINATE AND ASSIST LOCAL UTILITY PROVIDER FOR POWER SERVICE TO BUILDING.
- 9 PROPOSED LOCATION FOR NEW POLE MOUNTED POWER TRANSFORMER. CONTRACTOR SHALL CONTACT, COORDINATE AND ASSIST POWER SERVICE PROVIDER AS NEEDED FOR POWER SERVICE TO BUILDING.
- 10 EXISTING WATER METER. CONTRACTOR SHALL CONTACT, COORDINATE AND ASSIST THE CITY OF MERIDIAN WATER WORKS AS NEEDED TO HAVE THE EXISTING WATER METER CHANGED TO AN IRRIGATION METER.
- 11 (2) 2" PVC CONDUITS WITH 200# PULL WIRE FOR UNDERGROUND TELEPHONE AND DATA SERVICE. CONTACT LOCAL UTILITY PROVIDER FOR COORDINATION.
- 12 1 / 2 INCH PVC SCHED. 40 PVC WATER LINES FOR HOT AND COLD WATER TO DUMPSTER PAD REQUIRED.
- 13 EXISTING FIRE HYDRANT.
- 14 2" DOMESTIC WATER SERVICE LINE REQUIRED. CONTRACTOR SHALL INSTALL PER WATER DEPARTMENT REQUIREMENTS.

UTILITY CONTACT INFORMATION:
 WATER AND SANITARY SEWER: JAMES CLAYTON -- 1-601-485-1976
 GAS SERVICE: ATMOS -- 1-801-693-6331
 ELECTRICAL SERVICE: -- MISSISSIPPI POWER -- 1-800-532-1502
 CITY OF MERIDIAN INSPECTIONS: MR. SOLLIE -- 1-601-485-1900

- UTILITY NOTES**
1. CONTRACTOR IS RESPONSIBLE FOR REPAIRS TO ANY EXISTING UTILITY DAMAGED DURING CONSTRUCTION AT NO COST TO THE OWNER.
 2. THE MINIMUM HORIZONTAL SEPARATION BETWEEN THE CLOSEST TWO POINTS OF THE WATER LINE AND SANITARY SEWER LINE IS 5 FEET, OR MINIMUM VERTICAL SEPARATION BETWEEN THE CLOSEST TWO POINTS OF THE WATER AND SEWER LINE IS (12) INCHES.
 3. DIMENSIONS SHOWN ARE TO CENTER LINE OF PIPE OR FITTING OR TO CENTER LINE OF MANHOLE.
 4. THE TOP ELEVATION OF MANHOLES CONSTRUCTED IN PAVED AREAS SHALL MATCH FINISH GRADE. THE TOP ELEVATION OF MANHOLES CONSTRUCTED IN GRASSED AREAS SHALL BE 6 INCHES ABOVE FINISHED GRADE (UNLESS OTHERWISE NOTED).
 5. CONTRACTOR SHALL COORDINATE WITH ARCHITECTURAL & MEP PLANS FOR ACTUAL NUMBER AND LOCATION OF ALL UTILITY ENTRANCES TO INCLUDE, BUT NOT LIMITED TO, SANITARY SEWER LATERALS, DOMESTIC AND FIRE PROTECTION WATER SERVICE, SITE ELECTRICAL, TELEPHONE AND GAS SERVICE. CONTRACTOR SHALL COORDINATE INSTALLATION OF UTILITIES IN SUCH A MANNER AS TO AVOID CONFLICTS AND ASSURE PROPER DEPTHS ARE ACHIEVED AS WELL AS COORDINATING WITH CITY AND UTILITY COMPANY REQUIREMENTS AS TO LOCATION AND SCHEDULING OF TIE-INS AND CONNECTIONS PRIOR TO CONNECTING TO EXISTING UTILITIES.
 6. CONTRACTOR SHALL COORDINATE UTILITY INSPECTION WITH APPROPRIATE AUTHORITIES PRIOR TO COVERING TRENCHES AT INSTALLATION.
 7. CONSTRUCTION SHALL COMPLY WITH ALL GOVERNING CODES AND REQUIREMENTS. THE CONTRACTOR SHALL CONDUCT ALL REQUIRED TESTS AND AS-BUILT SURVEYS TO THE SATISFACTION OF THE UTILITY COMPANIES AND OWNER'S INSPECTING AUTHORITIES.
 8. CONTRACTOR SHALL COMPLY TO THE FULLEST EXTENT WITH THE LATEST STANDARDS OF OSHA DIRECTIVES OR ANY OTHER AGENCY HAVING JURISDICTION FOR EXCAVATION AND TRENCHING PROCEDURES. THE CONTRACTOR SHALL USE SUPPORT SYSTEMS, SLOPING, BENCHING, AND OTHER MEANS OF PROTECTION. THIS IS TO INCLUDE BUT IS NOT LIMITED TO ACCESS AND EGRESS FROM ALL EXCAVATION AND TRENCHING. THE CONTRACTOR IS RESPONSIBLE TO COMPLY WITH PERFORMANCE CRITERIA FOR OSHA.
 9. THE UTILITY ROUTING SHOWN ON THIS PLAN IS A RESULT OF COORDINATION EFFORTS WITH LOCAL UTILITY AUTHORITIES. HOWEVER, THE CONTRACTOR SHALL BE RESPONSIBLE FOR COORDINATING FINAL UTILITY LOCATIONS WITH THE LOCAL GOVERNING UTILITY AUTHORITIES.
 10. CONTRACTOR SHALL ENSURE THAT UTILITIES TO ADJOINING PROPERTIES ARE NOT DISRUPTED AND SHALL ADJUST SERVICES AS NECESSARY.
 11. THE CONTRACTOR IS SPECIFICALLY CAUTIONED THAT THE LOCATION AND/OR ELEVATION OF EXISTING UTILITIES AS SHOWN ON THESE PLANS ARE APPROXIMATE. THE INFORMATION IS NOT TO BE RELIED ON AS BEING EXACT OR COMPLETE. THE CONTRACTOR MUST CALL ALABAMA ONE CALL 1-800-292-8525 AT LEAST 72 HOURS BEFORE ANY EXCAVATION TO REQUEST EXACT FIELD LOCATION OF UTILITIES. IT SHALL BE THE RESPONSIBILITY OF THE CONTRACTOR TO RELOCATE ALL EXISTING UTILITIES WHICH CONFLICT WITH THE PROPOSED IMPROVEMENTS SHOWN ON THE PLANS.
 12. CONTRACTOR SHALL COORDINATE WITH ALL UTILITIES TO ASSURE PROPER DEPTH AND PREVENT ANY CONFLICT OF UTILITIES.
 13. ALL WATER PIPING 3" AND LESS SHALL BE TYPE "K" COPPER OR APPROVED EQUAL.
 14. ALL WATER PIPING LARGER THAN 3" SHALL BE CLASS 350 D.I.P. OR APPROVED EQUAL.
 15. ALL SANITARY SEWER SERVICE LATERALS SHALL BE C-900 PVC OR APPROVED EQUAL.
 16. CONTRACTOR TO COORDINATE WATER LINE INSTALLATION WITH LOCAL WATER COMPANY AND LOCAL AUTHORITIES FOR ALL METERS, VAULTS, BACKFLOW DEVICES, PIPES, FITTINGS, VALVES AND APPURTENANCES AND, THEY SHALL MEET CITY AND WATER COMPANIES REQUIREMENTS AND SPECIFICATIONS.
 17. CONTRACTOR SHALL INSTALL SANITARY SEWER CLEAN-OUT WITHIN 30" FROM BUILDING FACE, AT EACH BEND AND EVERY 75' O.C. (MAX) FOR ALL LATERALS EXITING BUILDING.
 18. ALL UTILITY COVERS (PULL BOXES/LIDS/MANHOLE COVERS/ACCESS HATCHES, ETC.) THAT ARE INSTALLED IN PAVED AREAS SHALL BE TRAFFIC-BEARING H-20 LOAD RATED AND BE ADJUSTED TO FINISH GRADE.
 19. REFER TO ARCHITECTURAL PLANS FOR LOCATION AND SIZE OF ALL CONDUITS TO OUTSIDE MENU BOARDS, DETECTOR LOOP, DIRECTIONAL SIGNAGE, SITE LIGHTS, ETC.



Order Plans

