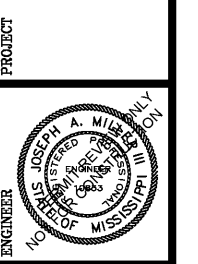


MTTR
ENGINEERS, INC.
CONSULTING ENGINEERS-LAND SURVEYORS
2500 SOUTHLAKE PARK SUITE 100, HOOVER, AL 35244
TELEPHONE (205) 320-0114



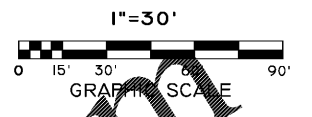
EROSION CONTROL PLAN
BURGER KING
2413 NORTH HILLS STREET
MERIDIAN, MISSISSIPPI
GPS HOSPITALITY LLC
ATLANTA, GEORGIA



DATE	REVISIONS

JOB NO:
19GPS01
FILE NAME:
19GPS01.DWG
DATE:
DRAWN:
T.T.
CHECKED:
DAR
SCALE:
1"=30'
SHEET

C4



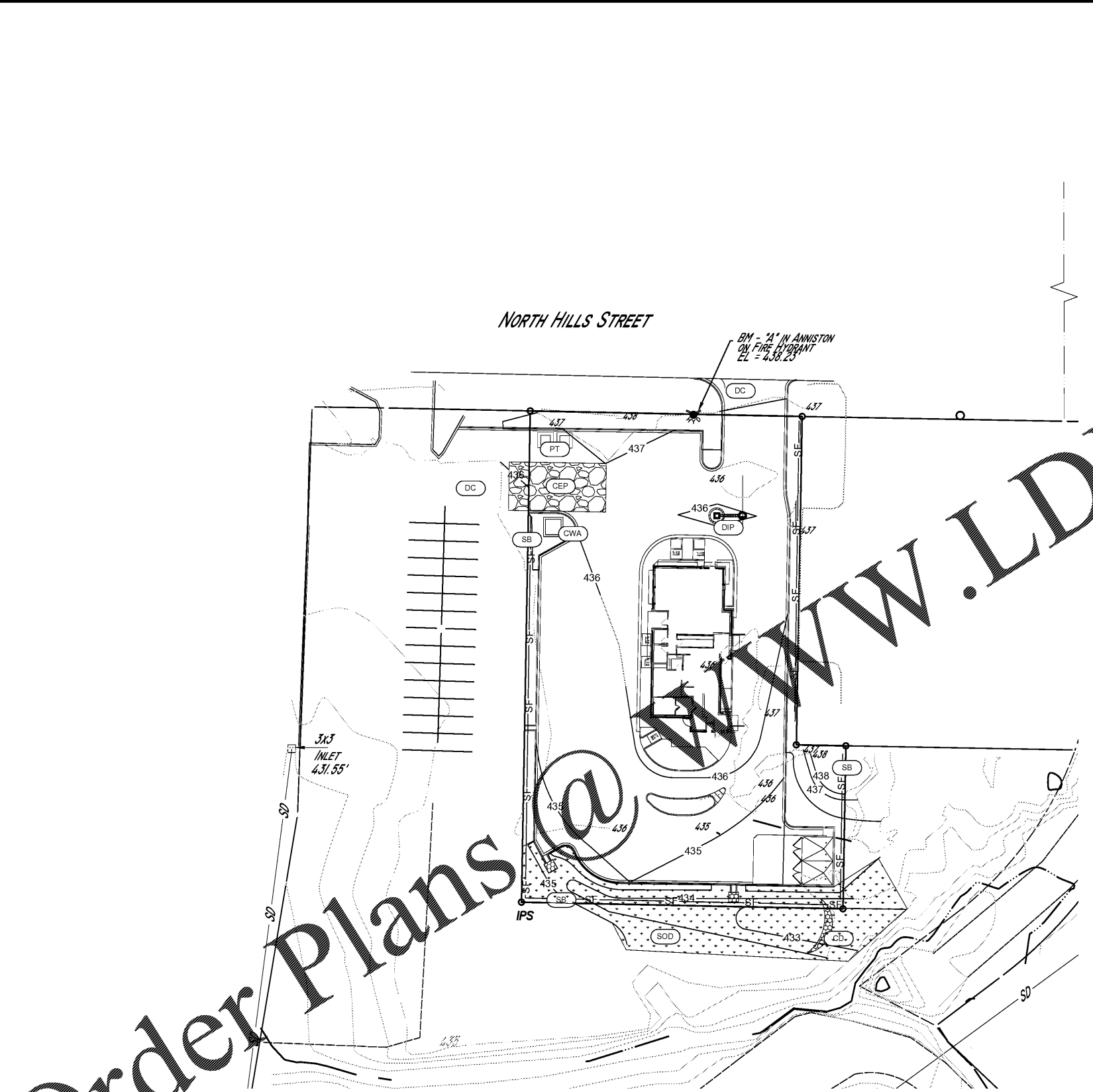
BMP KEY NOTE	
(CEP)	CONSTRUCTION EXIT
(SB)	SILT FENCE (TYPE)
(CWA)	CONCRETE WASHOUT
(PT)	PORTABLE TOILET
(DIP)	DOMED INLET PROTECTION
(RR)	CLASS 1 RP RAP
(CD)	CHECK DAM (PERMANENT)
VEGETATIVE KEY NOTE	
(SOD)	DISTURBED AREA STABILIZATION (SOLID SOD)
(TS)	DISTURBED AREA STABILIZATION (WITH TEMPORARY SEEDING)
(DC)	DUST CONTROL ON DISTURBED AREAS

- PHASE I EROSION CONTROL NOTES**
1. INSTALL STABILIZED CONSTRUCTION EXIT.
 2. INSTALL PERIMETER SILT FENCES ON THE SITE (CLEAR ONLY THOSE AREAS NECESSARY TO INSTALL SILT FENCE).
 3. BEGIN SITE DEMOLITION.
 4. AFTER REMOVAL OF EXISTING SITE IMPROVEMENTS, BEGIN SITE CUTTING / FILLING TO SUBGRADE.
 5. INSTALL STORM PIPING.
 6. STABILIZE ALL DISTURBED AREAS.

- SHEET NOTES:**
1. CONCRETE WASHOUT SHALL BE INSTALLED BEFORE ANY CONCRETE WORK IS PERFORMED ON SITE.
 2. REMOVE AND DISPOSE OF HARDENED CONCRETE AND RETURN THE CONCRETE WASHOUT TO A FUNCTIONAL CONDITION.

- TEMP. SEEDING & MULCH NOTES:**
1. USE MULCH FOR TEMPORARY STABILIZATION ON SLOPES < 15%.
 2. USE TEMPORARY SEEDING FOR ALL OTHER AREAS REQUIRING TEMPORARY STABILIZATION.

- EROSION CONTROL NOTES**
1. Contractor shall provide erosion and sedimentation control in accordance with federal, state, and local laws, codes, and regulations. All erosion control devices shall be properly maintained throughout construction until all disturbed areas are permanently stabilized.
 2. Erosion control devices shown on plans are a minimum requirement. Additional erosion control measures may be required to prevent sediments from leaving the site and shall be implemented by the contractor as needed due to construction methods and sequencing. Any adjustments or changes in the erosion control measures by the contractor shall be documented.
 3. Contractor shall be responsible for maintaining erosion control devices in good operating order during construction and for removal of all sediments and erosion control devices once the site is permanently stabilized.
 4. Contractor is responsible for filing and obtaining a land disturbance permit. Contractor is responsible for performing all inspections, background and construction sampling, and maintaining inspection and upset reports as required. If contractor is unfamiliar with such requirements, contractor may contact the engineer for more information.
 5. A project BMP inspection shall be performed in accordance with applicable city, county and state requirements.
 6. Contractor shall monitor and maintain all erosion control devices after each rainfall or at least twice a month.
 7. Contractors or subcontractors will be responsible for removing any sediment that may have collected in the storm sewer drainage systems in conjunction with the stabilization of the site.



NORTH HILLS STREET

BM - 2" IN ANKISTON ON FIRE HYDRANT EL = 438.23

3x3 INLET 431.55'

Order Plans @

