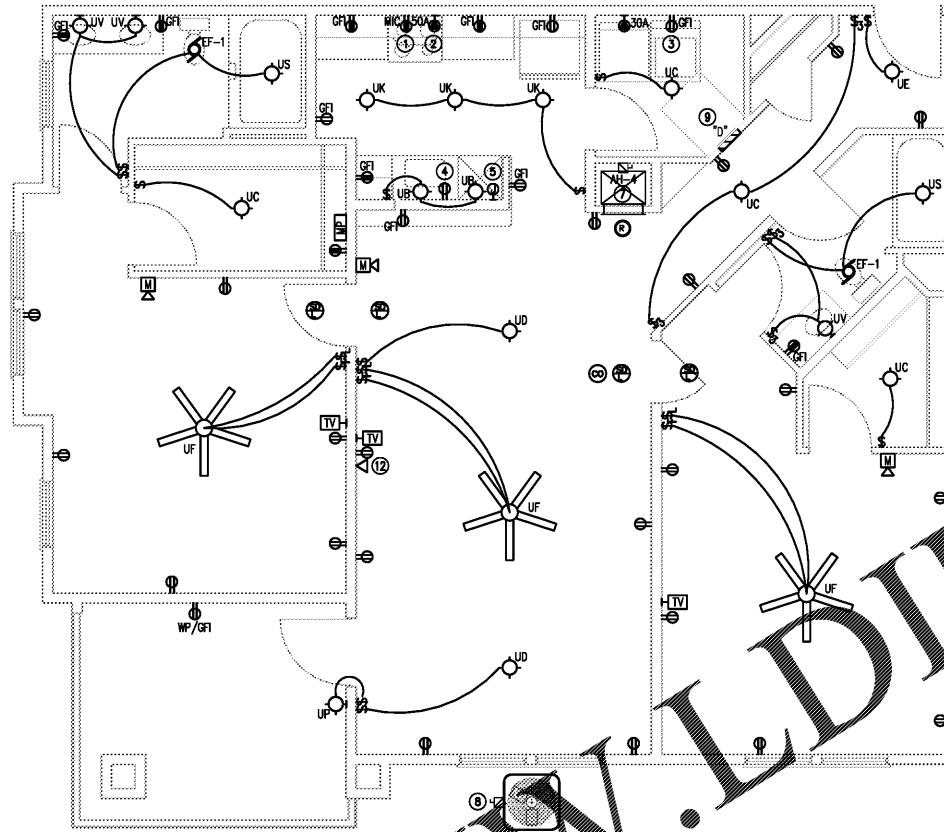
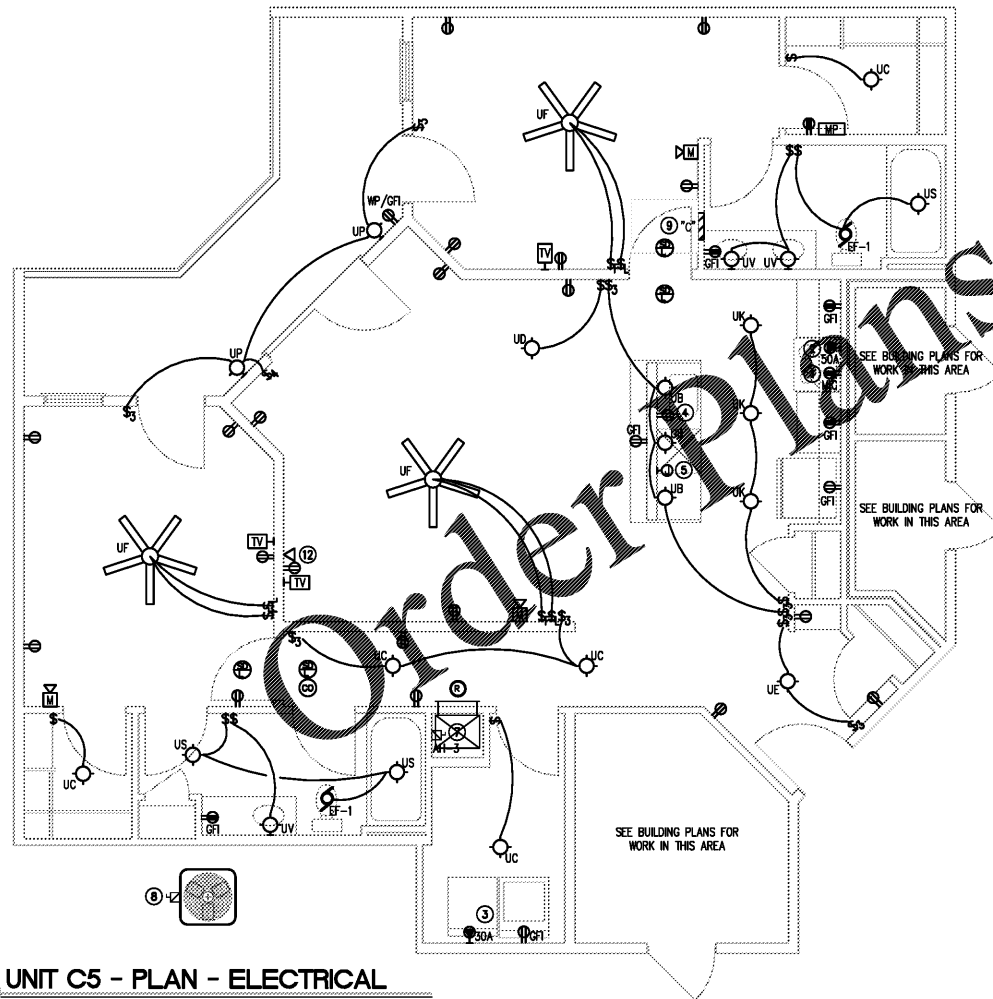


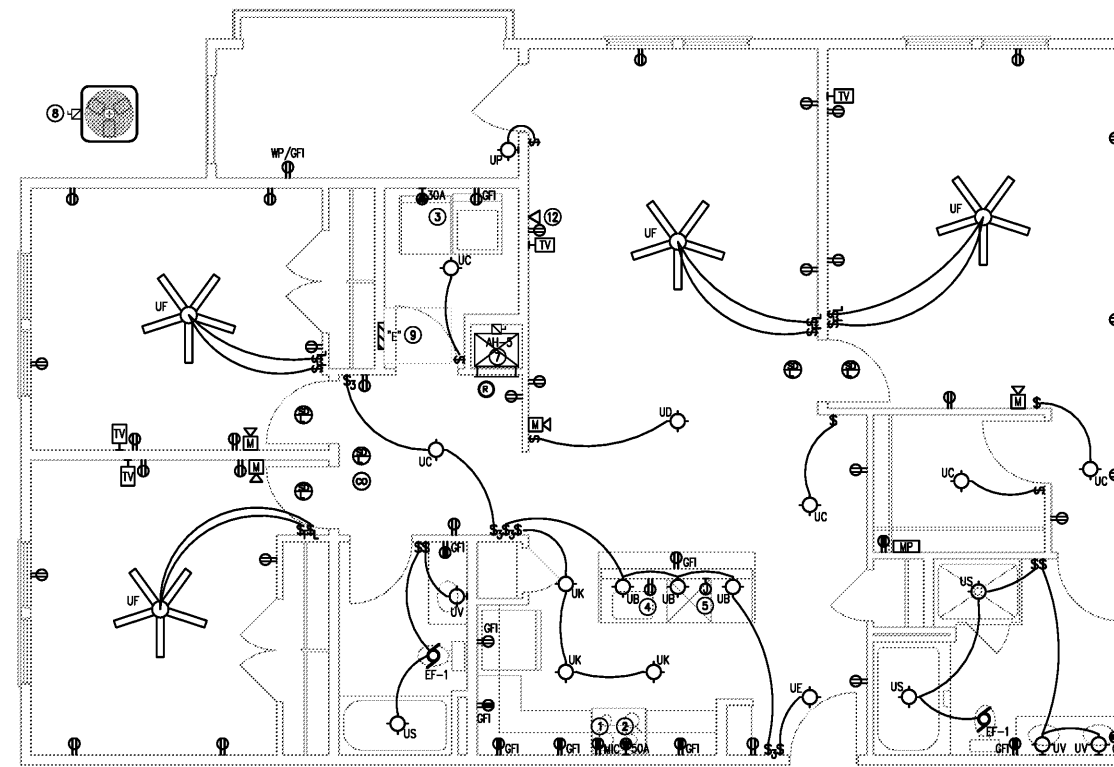
1 UNIT C4 - PLAN - ELECTRICAL  
1/4" = 1'-0"



2 UNIT C5 - PLAN - ELECTRICAL  
1/4" = 1'-0"



3 UNIT C5 - PLAN - ELECTRICAL  
1/4" = 1'-0"



4 UNIT D1 - PLAN - ELECTRICAL  
1/4" = 1'-0"

**GENERAL NOTES**

1. IN TYPE A AND TYPE B ACCESSIBLE UNITS, LIGHTING CONTROLS, ELECTRICAL SWITCHES INCLUDING CIRCUIT BREAKERS AND RECEPTACLE OUTLETS SHALL BE MOUNTED WITHIN A REACH RANGE SPECIFIED IN ANSI A117.1 SECTION 308.
2. IN TYPE A ACCESSIBLE UNITS, PROVIDE REMOTE RANGE EXHAUST HOOD/LIGHT SWITCHES MOUNTED WITHIN AN ACCESSIBLE REACH RANGE.

**TAGGED NOTES (TYPICAL OF ALL UNITS)**

1. PROVIDE RECEPTACLE IN CABINET SPACE ABOVE RANGE FOR MICROWAVE HOOD UNIT. COORDINATE LOCATION AND MOUNTING HEIGHT WITH MILLWORK. COORDINATE LOCATION OF MICROWAVE IN TYPE A UNITS WITH ARCHITECT PRIOR TO INSTALLATION.
2. PROVIDE 208V, 50A RECEPTACLE FOR RANGE, CONNECT COMPLETE.
3. PROVIDE 208V, 30A RECEPTACLE FOR DRYER, AND 120V, 15A RECEPTACLE ACCESSIBLE GFI RECEPTACLE FOR WASHER, CONNECT COMPLETE.
4. PROVIDE GFI RECEPTACLE AND SWITCH FOR DISPOSAL, CONNECT COMPLETE. COORDINATE EXACT LOCATION OF SWITCH WITH OWNER/ARCHITECT PRIOR TO ROUGH-IN.
5. PROVIDE JUNCTION BOX AND SWITCH FOR WASHES, CONNECT COMPLETE. COORDINATE EXACT LOCATION OF SWITCH WITH OWNER/ARCHITECT PRIOR TO ROUGH-IN.
6. NOT USED.
7. PROVIDE 60A/2P/FPN DISCONNECT SWITCH FOR EACH UNIT'S INDOOR UNIT. SEE UNIT PANEL SCHEDULE FOR ACTUAL WIRE AND BREAKER SIZE. ALL INDOOR UNITS CONNECTED TO RESPECTIVE UNIT PANEL, CIRCUIT 2.4.
8. PROVIDE 60A/2P/FPN DISCONNECT SWITCH FOR EACH UNIT'S HEAT PUMP UNIT. SEE UNIT PANEL SCHEDULE FOR ACTUAL WIRE AND BREAKER SIZE. COORDINATE LOCATIONS WITH M.C., ALL HEAT PUMP UNITS CONNECTED TO RESPECTIVE UNIT PANEL, CIRCUIT 6.8.
9. APPROXIMATE LOCATION OF UNIT ELECTRICAL PANEL. COORDINATE EXACT LOCATION WITH ARCHITECT AND STRUCTURAL.
10. THREE WAY SWITCH TO BE WIRED TO LIGHT LEG OF CEILING FAN.
11. INDOOR UNIT POWERED BY OUTDOOR UNIT. COORDINATE EXACT POWER REQUIREMENTS WITH MECHANICAL EQUIPMENT PROVIDER AND M.C.
12. COORDINATE QUANTITY, LOCATIONS AND MOUNTING OF TELEPHONE/DATA OUTLETS WITH OWNER.



14301 SOUTH LAKES DRIVE, SUITE E  
CHARLOTTE NC 28217  
704-688-9320 C.704-998-8143  
CONSULTING - DESIGN-BUILD  
NC LICENSE #P-1248

**CRABTREE NORTH APTS.**  
2251 Charles Drive  
Raleigh, North Carolina  
EYC COMPANIES

PROJECT 1915  
DATE 01OCT19  
DRAWN BY CME  
CHECKED BY CME

UNIT PLANS -  
ELECTRICAL

**E2.06**