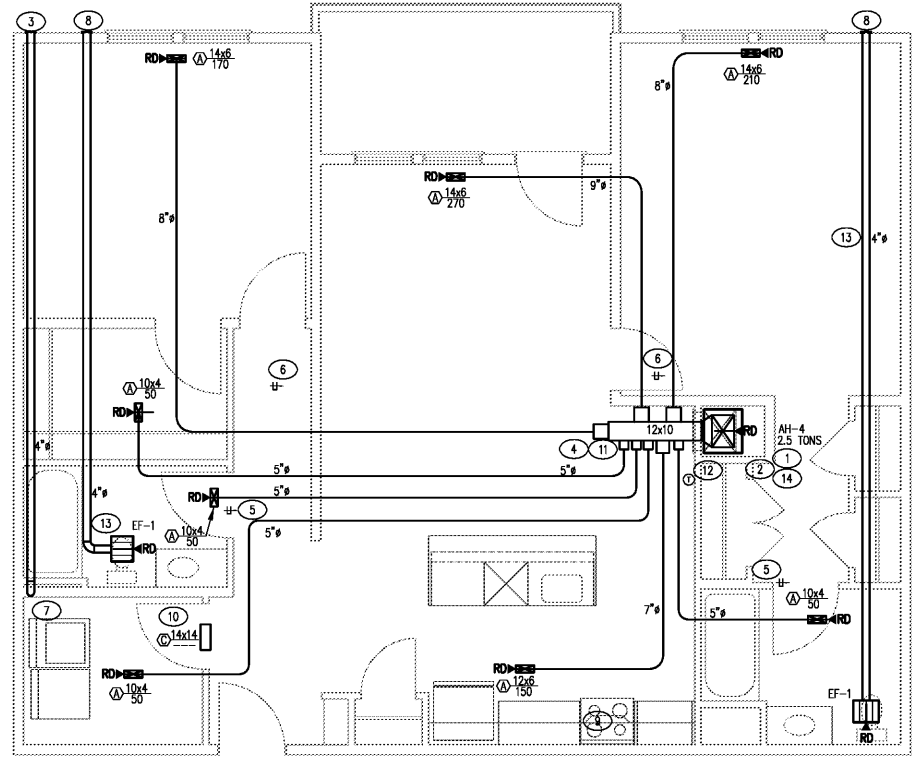


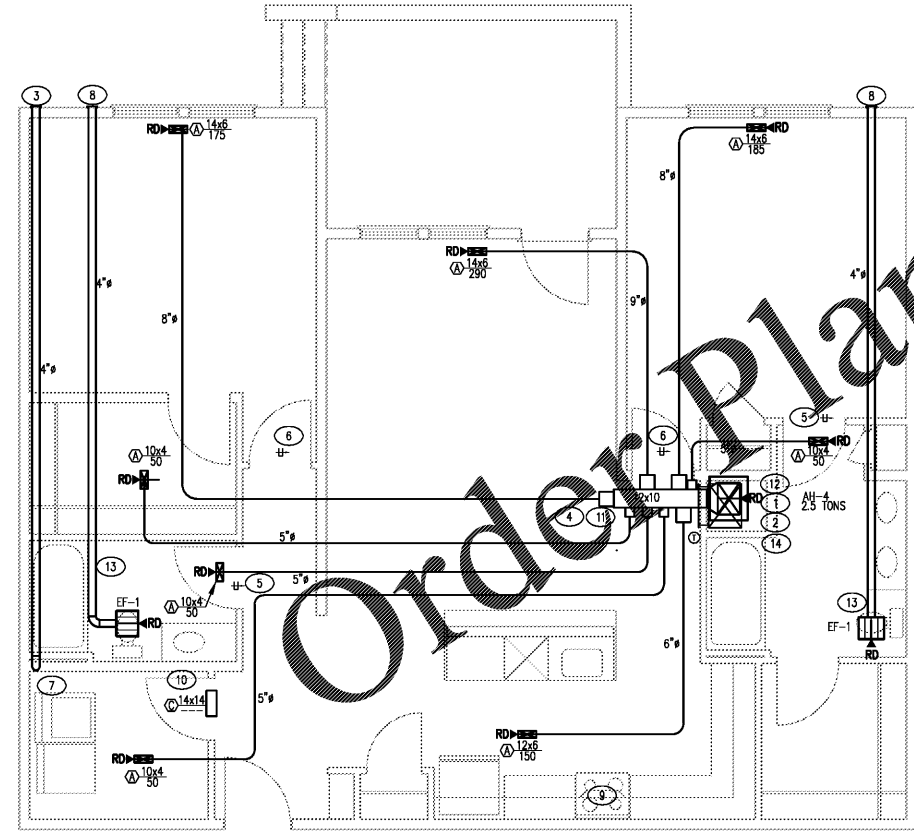
**CRABTREE NORTH APTS.**  
 2251 Charles Drive  
 Raleigh, North Carolina  
 EYC COMPANIES

PROJECT	1915
DATE	010CT19
DRAWN BY	CME
CHECKED BY	CME
UNIT PLANS - MECHANICAL	
<b>M2.08</b>	

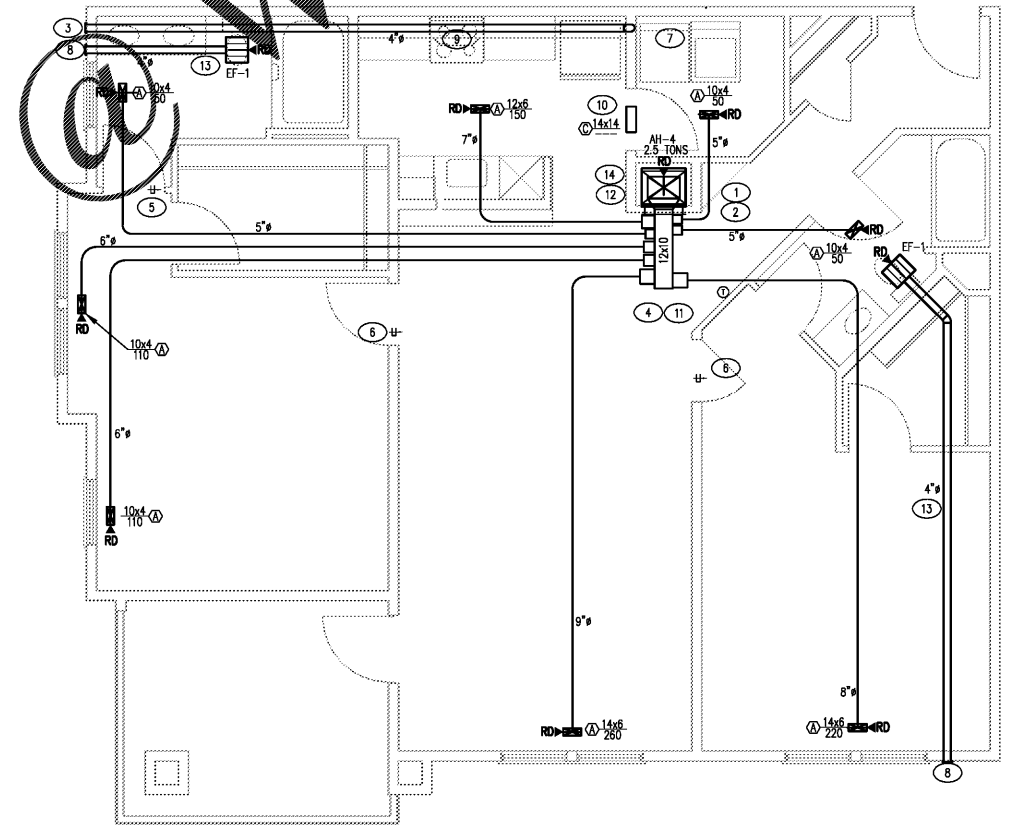
- TAGGED NOTES**
- HVAC UNIT HANGER BRACKET FURNISHED & INSTALLED BY MECH. CONTRACTOR. UNIT SIZE, INSTALLATION, ETC., TO BE COORDINATED WITH GC & FRAMING CONTRACTOR.
  - 3/4" CONDENSATE DRAIN ROUTED TO HUB DRAIN (HD BY FC) IN MECH. CLOSET. REFER TO PLUMBING RISERS. COORDINATE W/ DUCTS, G.C., FRAMING CONTR., STRUCTURE, ETC.
  - DRYER VENT PIPE SHALL BE 4" SINGLE WALL RIGID SHEETMETAL PER MECH. CODE. M.C. TO PROVIDE 4" VENT CAP WITH DAMPER & SHALL CAULK BEHIND CAP WITH 100% SILICONE.
  - SUPPLY AIR PLENUM OFF AIR HANDLING UNIT SHALL BE MIN. 18" LONG. CHECK ALL UNITS.
  - ALL BATHROOM DOORS TO HAVE UNDERCUTS.
  - ALL ROOMS WITH S.A. TO HAVE DOOR UNDERCUTS FOR RETURN. SEE ARCH. DOOR SCHEDULE FOR MORE INFORMATION.
  - 4" DRYER VENT DOWN WALL TO 2" ABOVE FINISH FLOOR (LOWER FLOOR). 4" DRYER VENT UP WALL 2" ABOVE FINISH FLOOR (UPPER FLOORS). PROVIDE RECESSED METAL BOX AND RATED RECESSED BOX WHEN IN RATED WALL. PROVIDE THERMAL DRYER VENT W/ IN RATED INTERSTITIAL SPACE/WALL. SEE DETAIL M2.04 FOR MORE INFORMATION.
  - MECH. CAP WITH GRID. COLOR TO MATCH WALL.
  - RECOMMEND TYPE RANGE HOOD BY OTHERS.
  - TRANSFER GRILLE FOR LAUNDRY ROOM. MIN. FREE AREA OF 100 SQ IN. IS REQUIRED. INSTALL GRILLE ABOVE DOOR(S). COORDINATE WITH STRUCTURAL.
  - SUPPLY AIR DUCT TRUNK TO RUN BETWEEN JOISTS. CONFIRM DIRECTION OF JOISTS DURING CONSTRUCTION AND ROTATE TRUNK 90° IF REQUIRED.
  - RETURN AIR THROUGH LOUVER, PART OF HVAC UNIT.
  - 4" GALVANIZED SHEET METAL FOR EXHAUST BATH FAN.
  - FIRESTAT EQUIVALENT TO DYNACON FS-200 TO BE INSTALLED IN SUPPLY DUCT. UNIT SHALL SHUTDOWN WHEN AIR TEMPERATURE REACHES THE PRESET LEVEL OF 135 DEG FAHRENHEIT. COORDINATE CONNECTION WITH E.C.



**1 UNIT C3 HC - PLAN - MECHANICAL**  
 1/4" = 1'-0"



**2 UNIT C4 - PLAN - MECHANICAL**  
 1/4" = 1'-0"



**3 UNIT C5 - PLAN - MECHANICAL**  
 1/4" = 1'-0"