



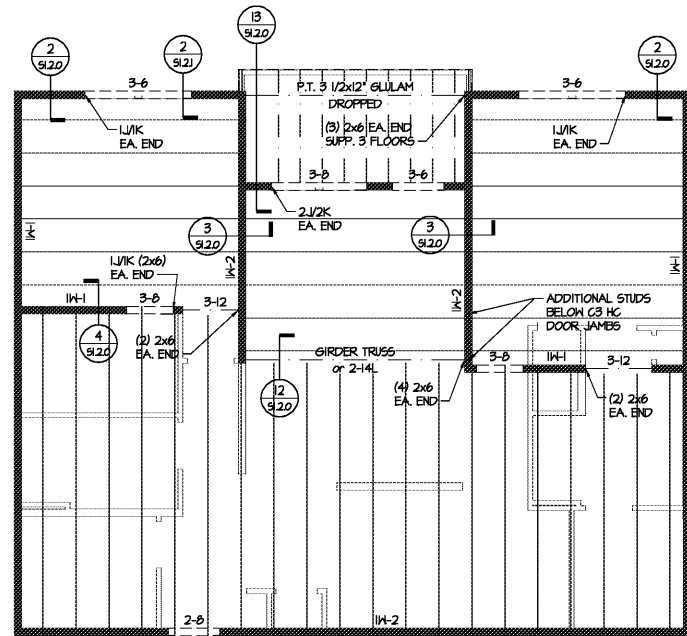
Structural Consulting Group, LLC
 6250 shiloh road - suite 20 - alpharetta, ga 30005
 phone (678) 513-4242 fax (678) 513-4232
 SCG Project No. 191003
 N.C. C.O.A. : P-0573

WOOD BEAM/HEADER SCHEDULE **			
MARK	MEMBER***	MARK	MEMBER***
2-6	(2) 2x6*	2-7L	(2) 1 3/4"x7 1/4" LVL
2-8	(2) 2x6*	2-7R	(2) 1 3/4"x7 1/4" LVL
2-10	(2) 2x10*	2-4L	(2) 1 3/4"x9 1/4" LVL
2-12	(2) 2x12*	2-4R	(2) 1 3/4"x9 1/4" LVL
3-6	(3) 2x6*	2-11L	(2) 1 3/4"x11 1/4" LVL
3-8	(3) 2x6*	2-11R	(2) 1 3/4"x11 1/4" LVL
3-10	(3) 2x10*	2-12L	(2) 1 3/4"x11 7/8" LVL
3-12	(3) 2x12*	2-12R	(2) 1 3/4"x11 7/8" LVL
4-6	(4) 2x6*	2-14L	(2) 1 3/4"x14" LVL
4-8	(4) 2x6*	2-14R	(2) 1 3/4"x14" LVL
4-10	(4) 2x10*	3-6P	3 1/2"x9 1/4" PSL
4-12	(4) 2x12*	3-12P	3 1/2"x11 7/8" PSL
(2) 5F	INDICATES 1/2" STEEL FLUSH PLATES WITH 1/2" THRU-BOLTS 12" O.C. STAGGERED. REFER TO 4/5/2.4 FOR FITCH PLATE DETAIL.	3-14P	3 1/2"x16" PSL
		3-16P	3 1/2"x16" PSL
		3-18P	3 1/2"x18" PSL
		3-19P	5 1/4"x9 1/4" PSL
		3-20P	5 1/4"x11 7/8" PSL
		3-21P	5 1/4"x14" PSL
		3-22P	5 1/4"x16" PSL
		3-23P	5 1/4"x18" PSL
		7-9P	7"x9 1/4" PSL
		7-11P	7"x11 7/8" PSL
		7-12P	7"x11 7/8" PSL
		7-14P	7"x14" PSL
		7-16P	7"x16" PSL
		7-18P	7"x18" PSL

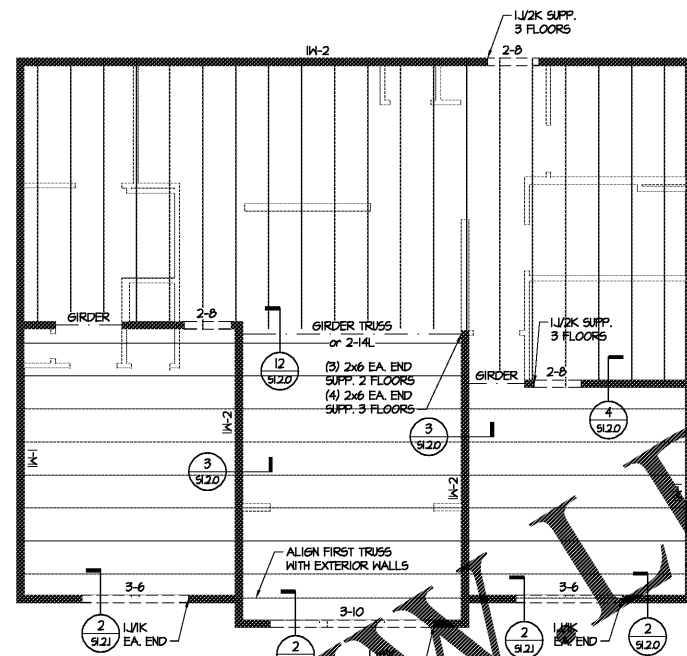
** PROVIDE 1/2" PLYWOOD BETWEEN FLIES AT INTERIOR CONDITIONS
 ** REFER TO NOTE 9 OF WOOD FRAMING NOTES ON SHEET S10.0 FOR HANGERS TO BE USED IF NOT SPECIFIED ON FRAMING PLANS OR IN FRAMING NOTES. PLEASE NOTE THAT SOME BEAM TYPES MAY NOT BE SPECIFIED IN THIS PROJECT
 *** MEMBERS SHOWN DASHED ON FRAMING PLANS TO BE DROPPED BELOW FLOOR CAVITY. MEMBERS SHOWN SOLID ON FRAMING PLANS TO BE WITHIN FLOOR CAVITY UNLESS NOTED OTHERWISE.

FLOOR FRAMING NOTES:

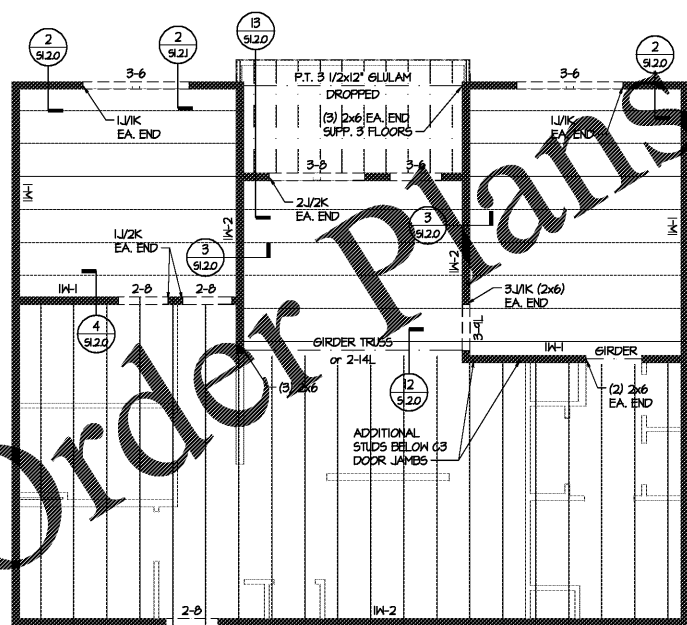
- INDICATES 18" DEEP OPEN WEB TRUSSES SPACED 24" O.C. MAXIMUM IN UNITS UNLESS NOTED OTHERWISE. TRUSS LAYOUT IS FOR SCHEMATIC PURPOSES ONLY, AND TRUSS SHOP DRAWINGS SHOULD BE REFERENCED FOR LOCATION OF TRUSSES. TRUSSES TO ALIGN AT ALL FLOORS. TRUSS DESIGNER SHALL COORDINATE TRUSS SPACING WITH FIXTURE LOCATIONS PER PLUMBING DRAWINGS, AND MECHANICAL CLOSETS PER MECHANICAL DRAWINGS. TOPPING TO BE 1" MAXIMUM GYPCRETE.
- PROVIDE A MINIMUM OF (2) STUDS (MATCH TYPICAL WALL STUD, SPECIES AND GRADE) AT EACH END OF BEAMS UNLESS NOTED OTHERWISE. L/WK MINIMUM EACH END OF HEADERS, UNLESS NOTED OTHERWISE.
- REFER TO ARCHITECTURAL AND MECHANICAL PLANS FOR FLOOR OPENINGS.
- REFER TO S10.0 FOR ADDITIONAL STRUCTURAL NOTES.
- INDICATES LOAD BEARING STUD WALL. WALLS NOT SHOWN SOLID ARE NOT TO BE USED FOR BEARING. REFER TO WALL SCHEDULE FOR STUD GRADE AND SPACING.
- INDICATES 2x6 PRESSURE TREATED JOISTS SPACED 16" O.C. MAXIMUM AT UNIT BALCONIES, UNLESS NOTED OTHERWISE ON PLANS. BALCONIES TO HAVE SLOPED (2" MAXIMUM) CONCRETE TOPPING.
- INDICATES 1 1/2" OPEN WEB TRUSSES @ 24" O.C. MAXIMUM AT BREEZEBAYS UNLESS NOTED OTHERWISE. BREEZEBAY GIRDERS TO BEAR DIRECTLY ON UNIT WALLS. TOPPING TO BE 2" MAXIMUM GYPCRETE.
- FLOOR SHEATHING PER NOTE 9 OF HORIZONTAL AND UPLIFT LOAD SYSTEM NOTES ON SHEET S10.2.
- REFER TO SHEARWALL PLANS FOR SHEARWALL LOCATIONS, AND SHEARWALL SCHEDULE FOR REQUIREMENTS.
- REFER TO ARCHITECTURAL DRAWINGS TO CONFIRM LOCATION OF ACCESSIBLE UNITS.
- STEEL STAIRS AND LANDINGS BY STEEL SUPPLIER, PER NOTES ON SHEET S10.0.
- DRAWING DESIGNATION BELOW UNIT TYPE INDICATES UNIT FLOOR FRAMING PLAN UNITS SHOWN ON STRUCTURAL PLANS OCCUR BELOW FLOOR INDICATED IN SHEET TITLE.



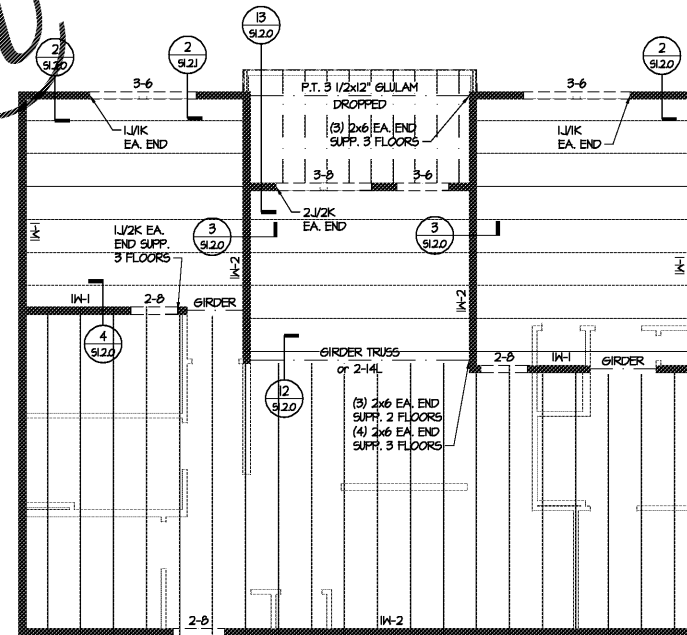
5 FLOOR FRAMING ABOVE UNIT C3 BELOW C3 HC
 SCALE: 3/16" = 1'-0"



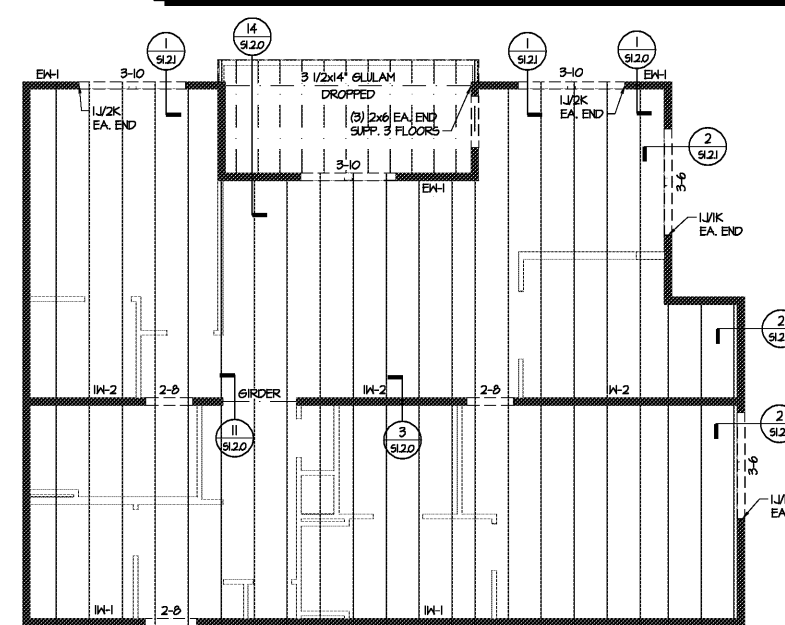
3 FLOOR FRAMING ABOVE UNIT C3
 SCALE: 3/16" = 1'-0"



4 FLOOR FRAMING ABOVE UNIT C3 HC
 SCALE: 3/16" = 1'-0"



2 FLOOR FRAMING ABOVE UNIT C3
 SCALE: 3/16" = 1'-0"



1 FLOOR FRAMING ABOVE UNIT C2
 SCALE: 3/16" = 1'-0"

CRABTREE NORTH APTS.

2251 Charles Drive
 Raleigh, North Carolina
 EYC COMPANIES

03FEB20
 PRICING
 SET

PROJECT 1915
 DATE 06NOV19
 DRAWN BY SCG
 CHECKED BY F80

UNIT FRAMING PLANS

\$5.0.5

