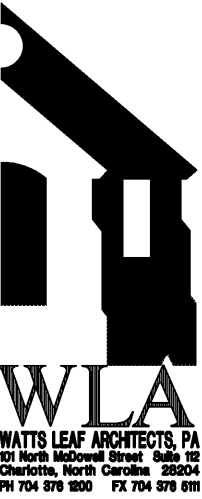




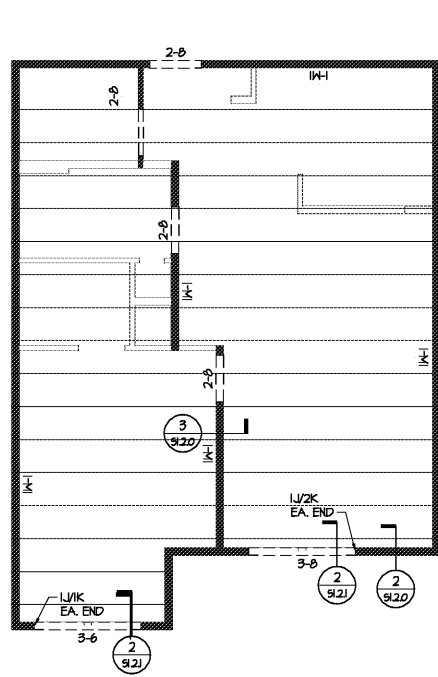
Structural Consulting Group, LLC  
 6250 shiloh road - suite 20 - alpharetta, ga 30005  
 phone (678) 513-4242 fax (678) 513-4232  
 SCG Project No. 191003  
 N.C. C.O.A. : P-0573



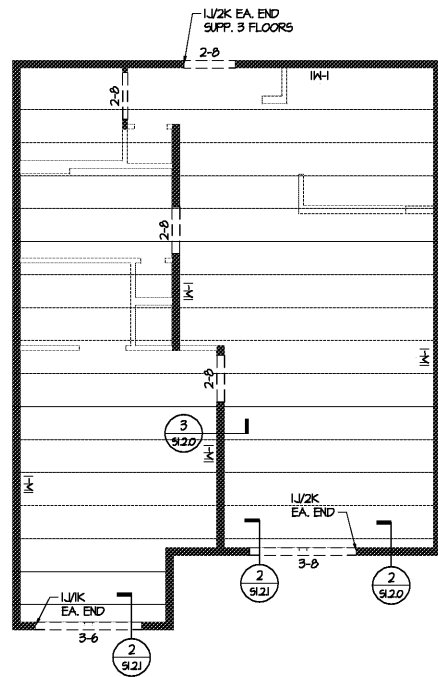
WLA  
 WATTS LEAF ARCHITECTS, PA  
 171 North McDowell Street, Suite 102  
 Charlotte, North Carolina 28204  
 PH 704 376 1800 FX 704 376 6111

WOOD BEAM/HEADER SCHEDULE **					
MARK	MEMBER***	MARK	MEMBER***	MARK	MEMBER***
2-6	(2) 2x6*	2-7L	(2) 1 3/4"x1 1/4" LVL	35-4P	3 1/2"x1 1/4" PSL
2-8	(2) 2x8*	2-7R	(2) 1 3/4"x1 1/4" LVL	35-1P	3 1/2"x1 1/4" PSL
2-10	(2) 2x10*	2-11L	(2) 1 3/4"x1 1/4" LVL	35-12P	3 1/2"x1 7/8" PSL
2-12	(2) 2x12*	2-12L	(2) 1 3/4"x1 1/4" LVL	35-14P	3 1/2"x1 7/8" PSL
		2-14L	(2) 1 3/4"x1 1/4" LVL	35-16P	3 1/2"x1 7/8" PSL
3-6	(3) 2x6*	2-16L	(2) 1 3/4"x1 1/4" LVL	35-18P	3 1/2"x1 7/8" PSL
3-8	(3) 2x8*	2-18L	(2) 1 3/4"x1 1/4" LVL		
3-10	(3) 2x10*				
3-12	(3) 2x12*				
4-6	(4) 2x6*	3-7	(3) 1 3/4"x1 1/4" LVL	5-4P	5 1/4"x1 1/4" PSL
4-8	(4) 2x8*	3-4L	(3) 1 3/4"x1 1/4" LVL	5-11P	5 1/4"x1 1/4" PSL
4-10	(4) 2x10*	3-11L	(3) 1 3/4"x1 1/4" LVL	5-12P	5 1/4"x1 7/8" PSL
4-12	(4) 2x12*	3-12L	(3) 1 3/4"x1 1/4" LVL	5-14P	5 1/4"x1 7/8" PSL
		3-14L	(3) 1 3/4"x1 1/4" LVL	5-16P	5 1/4"x1 7/8" PSL
		3-16L	(3) 1 3/4"x1 1/4" LVL	5-18P	5 1/4"x1 7/8" PSL
		3-18L	(3) 1 3/4"x1 1/4" LVL		
		3-19L	(3) 1 3/4"x1 1/4" LVL	7-4P	7"x1 1/4" PSL
		4-7L	(4) 1 3/4"x1 1/4" LVL	7-11P	7"x1 1/4" PSL
		4-8L	(4) 1 3/4"x1 1/4" LVL	7-12P	7"x1 7/8" PSL
		4-11L	(4) 1 3/4"x1 1/4" LVL	7-14P	7"x1 7/8" PSL
		4-12L	(4) 1 3/4"x1 1/4" LVL	7-16P	7"x1 7/8" PSL
		4-14L	(4) 1 3/4"x1 1/4" LVL	7-18P	7"x1 7/8" PSL
		4-16L	(4) 1 3/4"x1 1/4" LVL		
		4-18L	(4) 1 3/4"x1 1/4" LVL		

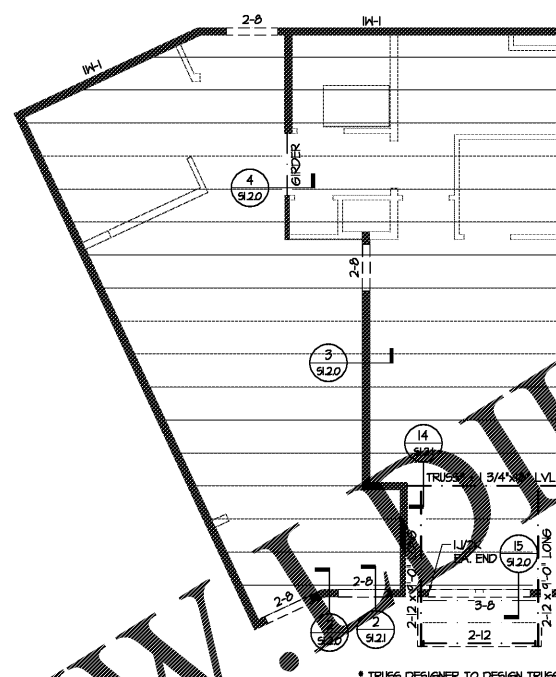
\* PROVIDE 1/2" PLYWOOD BETWEEN FLIES AT INTERIOR CONDITIONS  
 \*\* REFER TO NOTE 9 OF 'WOOD FRAMING NOTES' ON SHEET S1.0.0 FOR HANGERS TO BE USED IF NOT SPECIFIED ON FRAMING PLANS OR IN FRAMING NOTES. (PLEASE NOTE THAT SOME BEAM TYPES MAY NOT BE SPECIFIED IN THIS PROJECT)  
 \*\*\* MEMBERS SHOWN DASHED ON FRAMING PLANS TO BE DROPPED BELOW FLOOR CAVITY. MEMBERS SHOWN SOLID ON FRAMING PLANS TO BE WITHIN FLOOR CAVITY UNLESS NOTED OTHERWISE.



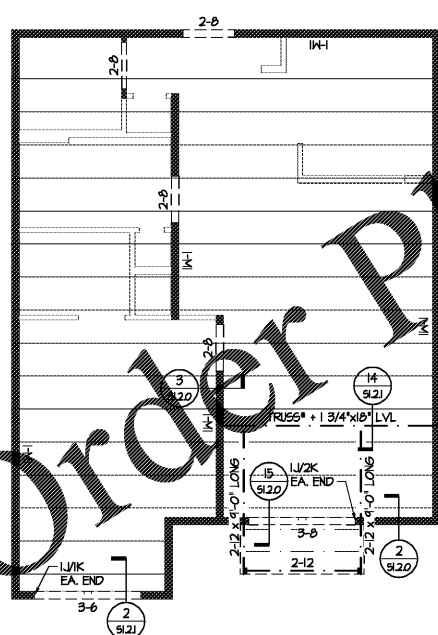
6 FLOOR FRAMING ABOVE UNIT B5a  
 SCALE: 3/16" = 1'-0" BELOW UNIT B5c



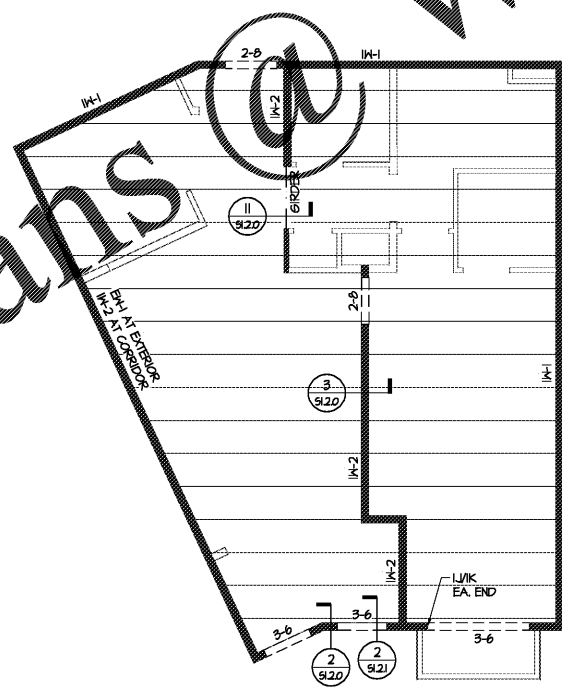
4 FLOOR FRAMING ABOVE UNIT B5  
 SCALE: 3/16" = 1'-0" BELOW UNIT B5



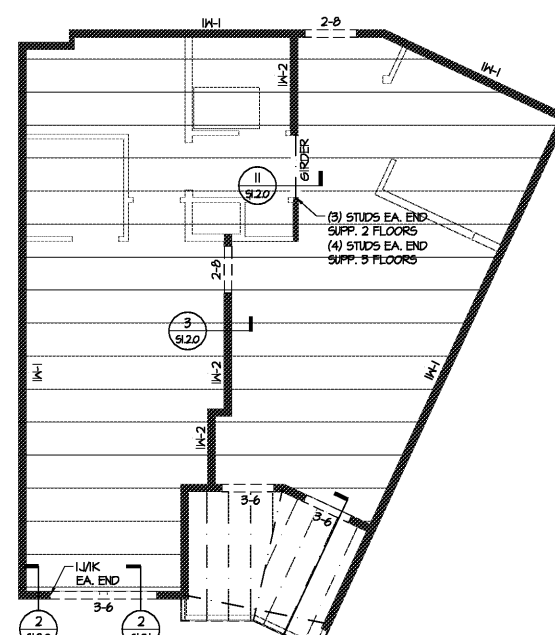
2 FLOOR FRAMING ABOVE UNIT B4b  
 SCALE: 3/16" = 1'-0"



5 FLOOR FRAMING ABOVE UNIT B5  
 SCALE: 3/16" = 1'-0" BELOW UNIT B5j



3 FLOOR FRAMING ABOVE UNIT B4s  
 SCALE: 3/16" = 1'-0"



1 FLOOR FRAMING ABOVE UNIT B4  
 SCALE: 3/16" = 1'-0"

**FLOOR FRAMING NOTES:**

- INDICATES 18" DEEP OPEN WEB TRUSSES SPACED 24" o.c. MAXIMUM IN UNITS UNLESS NOTED OTHERWISE. TRUSS LAYOUT IS FOR SCHEMATIC PURPOSES ONLY, AND TRUSS SHOP DRAWINGS SHOULD BE REFERENCED FOR LOCATION OF TRUSSES. TRUSSES TO ALIGN AT ALL FLOORS.
- TRUSS DESIGNER SHALL COORDINATE TRUSS SPACINGS WITH FIXTURE LOCATIONS PER PLUMBING DRAWINGS, AND MECHANICAL CLOSETS PER MECHANICAL DRAWINGS. TOPPING TO BE 1" MAXIMUM GYPCRETE.
- PROVIDE A MINIMUM OF (2) STUDS (MATCH TYPICAL WALL STUD, SPECIES AND GRADE) AT EACH END OF BEAMS UNLESS NOTED OTHERWISE. L/2K MINIMUM EACH END OF HEADERS, UNLESS NOTED OTHERWISE.
- REFER TO ARCHITECTURAL AND MECHANICAL PLANS FOR FLOOR OPENINGS.
- REFER TO S1.0.0 FOR ADDITIONAL STRUCTURAL NOTES.
- INDICATES LOAD BEARING STUD WALL. WALLS NOT SHOWN SOLID ARE NOT TO BE USED FOR BEARING. REFER TO WALL SCHEDULE FOR STUD GRADE AND SPACING.
- INDICATES 2x8 PRESSURE TREATED JOISTS SPACED 16" o.c. MAXIMUM AT UNIT BALCONIES, UNLESS NOTED OTHERWISE ON PLANS. BALCONIES TO HAVE SLOPED (2" MAXIMUM) CONCRETE TOPPING.
- INDICATES 14" OPEN WEB TRUSSES 24" o.c. MAXIMUM AT BREEZEWAYS UNLESS NOTED OTHERWISE. BREEZEWAY GIRDERS TO BEAR DIRECTLY ON UNIT WALLS. TOPPING TO BE 2" MAXIMUM GYPCRETE.
- FLOOR SHEATHING PER NOTE 9 OF 'HORIZONTAL AND UPLIFT LOAD SYSTEM NOTES' ON SHEET S1.0.2.
- REFER TO SHEARWALL PLANS FOR SHEARWALL LOCATIONS, AND SHEARWALL SCHEDULE FOR REQUIREMENTS.
- REFER TO ARCHITECTURAL DRAWINGS TO CONFIRM LOCATION OF ACCESSIBLE UNITS.
- STEEL STAIRS AND LANDINGS BY STEEL SUPPLIER, PER NOTES ON SHEET S1.0.0.
- DRAWING DESIGNATION BELOW UNIT TYPE INDICATES UNIT FLOOR FRAMING PLAN. UNITS SHOWN ON STRUCTURAL PLANS OCCUR BELOW FLOOR INDICATED IN SHEET TITLE.

CRABTREE NORTH APTS.  
 2251 Charles Drive  
 Raleigh, North Carolina  
 EYC COMPANIES

03FEB20  
 PRICING  
 SET

PROJECT 1915  
 DATE 06NOV19  
 DRAWN BY SCG  
 CHECKED BY F80

UNIT FRAMING PLANS

S5.0.3