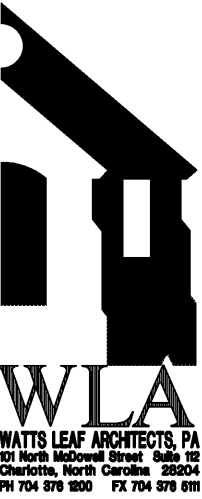




Structural Consulting Group, LLC  
 6250 shiloh road - suite 20 - alpharetta, ga 30005  
 phone (678) 513-4242 fax (678) 513-4232  
 SCG Project No. 191003  
 N.C. C.O.A. : P-0573



WLA  
 WATTS LEAF ARCHITECTS, PA  
 171 North McDowell Street, Suite 102  
 Charlotte, North Carolina 28204  
 PH 704 376 1800 FX 704 376 6111



**FLOOR FRAMING NOTES:**

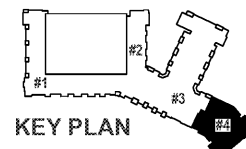
- INDICATES 18" DEEP OPEN WEB TRUSSES SPACED 24" o.c. MAXIMUM UNITS UNLESS NOTED OTHERWISE. TRUSS LAYOUT IS FOR SCHEMATIC PURPOSES ONLY AND TRUSS SHOWN DRAWINGS SHOULD BE REFERENCED FOR LOCATION OF TRUSSES. TRUSSES TO ALIGN WITH ALL FLOORS. TRUSS DESIGNER SHALL COORDINATE TRUSS SPACING WITH FIXTURE LOCATIONS PER PLUMBING DRAWINGS AND MECHANICAL CLOSETS PER MECHANICAL DRAWINGS. TOPPING TO BE 1" MAXIMUM GYPCRETE.
- PROVIDE A MINIMUM OF (2) STUDS MATCH TYPICAL WALL STUD, SPECIES AND GRADE) AT EACH END OF BEAMS UNLESS NOTED OTHERWISE. (2) MINIMUM EACH END OF HEADERS, UNLESS NOTED OTHERWISE.
- REFER TO ARCHITECTURAL AND MECHANICAL PLANS FOR FLOOR OPENINGS.
- REFER TO S.I.O.O. FOR ADDITIONAL GENERAL NOTES.
- INDICATES LOAD BEARING STUD WALL. WALLS NOT SHOWN SOLID ARE NOT TO BE USED FOR BEARING. REFER TO WALL SCHEDULE FOR STUD GRADE AND SPACING.
- INDICATES 2x6 PRESSURE TREATED JOISTS SPACED 16" o.c. MAXIMUM AT UNIT BALCONIES, UNLESS NOTED OTHERWISE. BALCONIES TO HAVE SLOPED (2" MAXIMUM) CONCRETE TOPPING.
- INDICATES 14" OPEN WEB TRUSSES @ 24" o.c. MAXIMUM AT BREEZEWAYS UNLESS NOTED OTHERWISE. BREEZEWAY GIRDERS TO BEAR DIRECTLY ON UNIT WALLS. TOPPING TO BE 1" MAXIMUM GYPCRETE.
- FLOOR SHEATHING PER NOTE 9 OF 'HORIZONTAL AND UPLIFT LOAD SYSTEM NOTES' ON SHEET S.I.O.O.
- REFER TO SHEARWALL PLANS FOR SHEARWALL LOCATIONS, AND SHEARWALL SCHEDULE FOR REQUIREMENTS.
- REFER TO ARCHITECTURAL DRAWINGS TO CONFIRM LOCATION OF ACCESSIBLE UNITS.
- STEEL STAIRS AND LANDINGS BY STEEL SUPPLIER, PER NOTES ON SHEET S.I.O.O.
- DRAWING DESIGNATION BELOW UNIT TYPE INDICATES UNIT FLOOR FRAMING PLAN. UNITS SHOWN ON STRUCTURAL PLANS OCCUR BELOW FLOOR INDICATED IN SHEET TITLE.

**WOOD BEAM/HEADER SCHEDULE \*\***

MARK	MEMBER***	MARK	MEMBER***	MARK	MEMBER***
2-6	(2) 2x6*	2-TL	(2) 1 3/4"x7 1/4" LVL	35-4P	3 1/2"x9 1/4" PSL
2-8	(2) 2x8*	2-4L	(2) 1 3/4"x9 1/4" LVL	35-11P	3 1/2"x11 1/4" PSL
2-10	(2) 2x10*	2-1L	(2) 1 3/4"x11 1/4" LVL	35-12P	3 1/2"x11 7/8" PSL
2-12	(2) 2x12*	2-12L	(2) 1 3/4"x11 7/8" LVL	35-14P	3 1/2"x14" PSL
		2-14L	(2) 1 3/4"x14" LVL	35-16P	3 1/2"x16" PSL
3-6	(3) 2x6*	2-16L	(2) 1 3/4"x16" LVL	35-18P	3 1/2"x18" PSL
3-8	(3) 2x8*	2-18L	(2) 1 3/4"x18" LVL		
3-10	(3) 2x10*			5-4P	5 1/4"x9 1/4" PSL
3-12	(3) 2x12*	3-TL	(3) 1 3/4"x7 1/4" LVL	5-11P	5 1/4"x11 1/4" PSL
		3-4L	(3) 1 3/4"x9 1/4" LVL	5-12P	5 1/4"x11 7/8" PSL
4-6	(4) 2x6*	3-11L	(3) 1 3/4"x11 1/4" LVL	5-14P	5 1/4"x14" PSL
4-8	(4) 2x8*	3-12L	(3) 1 3/4"x11 7/8" LVL	5-16P	5 1/4"x16" PSL
4-10	(4) 2x10*	3-14L	(3) 1 3/4"x14" LVL	5-18P	5 1/4"x18" PSL
4-12	(4) 2x12*	3-16L	(3) 1 3/4"x16" LVL		
		3-18L	(3) 1 3/4"x18" LVL	7-4P	7"x9 1/4" PSL
(2) SF -	INDICATES (2) 1/2" STEEL FLITCH PLATES WITH 1/2" THRU-BOLTS @ 12" o.c. STAGGERED. REFER TO 4/5L2.4 FOR FLITCH PLATE DETAIL.	4-TL	(4) 1 3/4"x7 1/4" LVL	7-11P	7"x11 1/4" PSL
		4-4L	(4) 1 3/4"x9 1/4" LVL	7-12P	7"x11 7/8" PSL
		4-11L	(4) 1 3/4"x11 1/4" LVL	7-14P	7"x14" PSL
		4-12L	(4) 1 3/4"x11 7/8" LVL	7-16P	7"x16" PSL
		4-14L	(4) 1 3/4"x14" LVL	7-18P	7"x18" PSL
		4-16L	(4) 1 3/4"x16" LVL		
		4-18L	(4) 1 3/4"x18" LVL		

\* PROVIDE 1/2" PLYWOOD BETWEEN FLIES AT INTERIOR CONDITIONS  
 \*\* REFER TO NOTE 9 OF 'WOOD FRAMING NOTES' ON SHEET S.I.O.O. FOR HANGERS TO BE USED IF NOT SPECIFIED ON FRAMING PLANS OR IN FRAMING NOTES. (PLEASE NOTE THAT SOME BEAM TYPES MAY NOT BE SPECIFIED IN THIS PROJECT)  
 \*\*\* MEMBERS SHOWN DASHED ON FRAMING PLANS TO BE DROPPED BELOW FLOOR CAVITY. MEMBERS SHOWN SOLID ON FRAMING PLANS TO BE WITHIN FLOOR CAVITY UNLESS NOTED OTHERWISE.

**FLOOR FRAMING PLAN - BUILDING #4 - 348.63'**  
 SCALE: 1/8" = 1'-0"



**CRABTREE NORTH APTS.**  
 2251 Charles Drive  
 Raleigh, North Carolina  
 EYC COMPANIES

**03FEB20 PRICING SET**

PROJECT 1915  
 DATE 06NOV19  
 DRAWN BY SCG  
 CHECKED BY F80

FLOOR FRAMING PLAN - BUILDING #4 - 348.63'

**S3.5.4**