

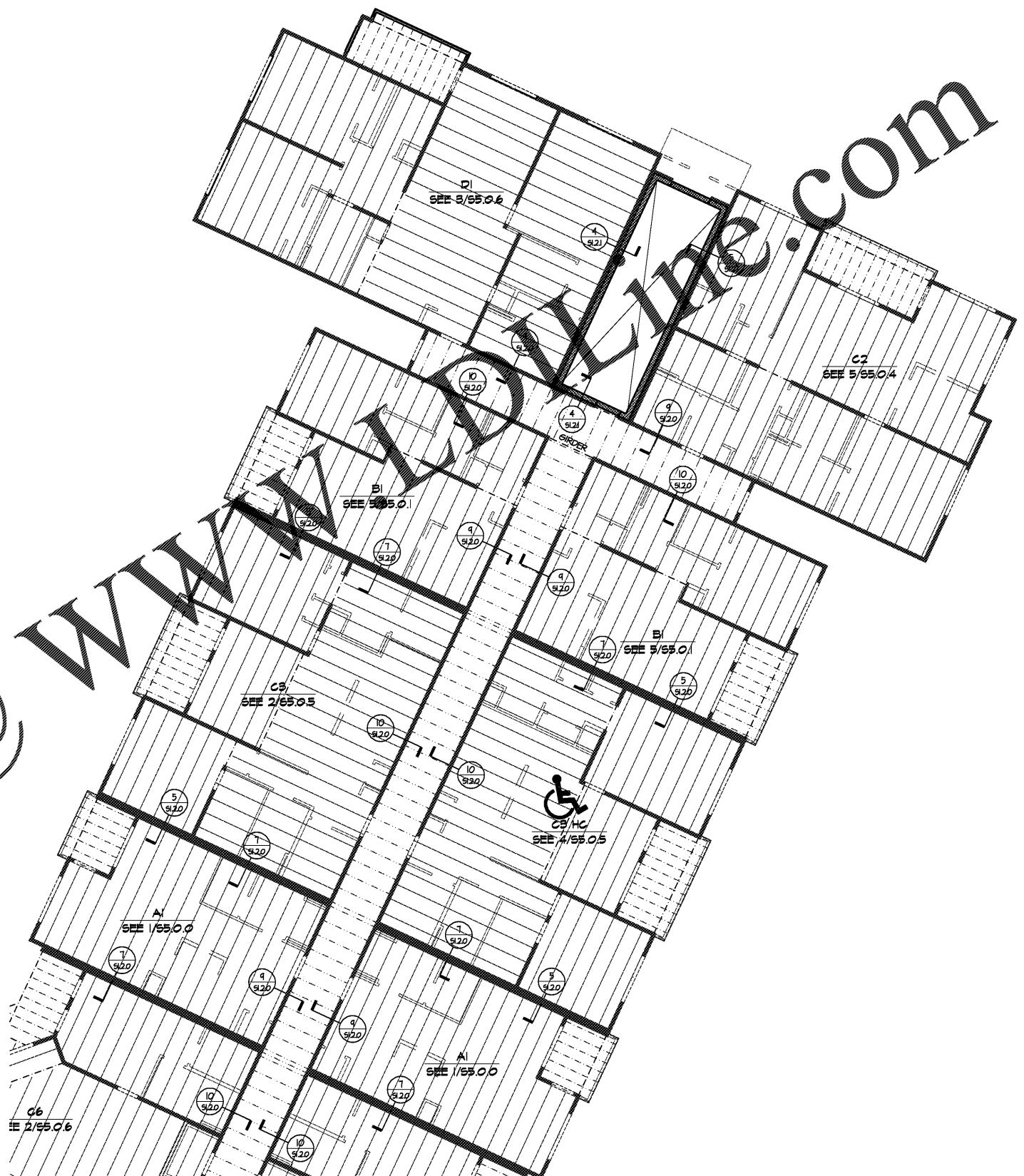
WOOD BEAM/HEADER SCHEDULE **

MARK	MEMBER***	MARK	MEMBER***	MARK	MEMBER***
2-6	(2) 2x6*	2-7L	(2) 1 3/4"x1 1/4" LVL	35-4P	3 1/2"x4 1/4" PSL
2-8	(2) 2x8*	2-4L	(2) 1 3/4"x1 1/4" LVL	35-11P	3 1/2"x11 1/4" PSL
2-10	(2) 2x10*	2-11L	(2) 1 3/4"x11 1/4" LVL	35-12P	3 1/2"x11 7/8" PSL
2-12	(2) 2x12*	2-12L	(2) 1 3/4"x11 7/8" LVL	35-14P	3 1/2"x14" PSL
		2-14L	(2) 1 3/4"x14" LVL	35-16P	3 1/2"x16" PSL
3-6	(3) 2x6*	2-16L	(2) 1 3/4"x16" LVL	35-18P	3 1/2"x18" PSL
3-8	(3) 2x8*	2-18L	(2) 1 3/4"x18" LVL		
3-10	(3) 2x10*			5-4P	5 1/4"x4 1/4" PSL
3-12	(3) 2x12*	3-7L	(3) 1 3/4"x1 1/4" LVL	5-11P	5 1/4"x11 1/4" PSL
		3-4L	(3) 1 3/4"x4 1/4" LVL	5-12P	5 1/4"x11 7/8" PSL
4-6	(4) 2x6*	3-11L	(3) 1 3/4"x11 1/4" LVL	5-14P	5 1/4"x14" PSL
4-8	(4) 2x8*	3-12L	(3) 1 3/4"x11 7/8" LVL	5-16P	5 1/4"x16" PSL
4-10	(4) 2x10*	3-14L	(3) 1 3/4"x14" LVL	5-18P	5 1/4"x18" PSL
4-12	(4) 2x12*	3-16L	(3) 1 3/4"x16" LVL		
		3-18L	(3) 1 3/4"x18" LVL	7-4P	7"x4 1/4" PSL
(2) 5F - INDICATES (2) 1/2" STEEL FLITCH PLATES WITH 1/2" THRU-BOLTS @ 12" o.c. STAGGERED. REFER TO 9/S12.4 FOR FLITCH PLATE DETAIL.		4-7L	(4) 1 3/4"x1 1/4" LVL	7-11P	7"x11 1/4" PSL
		4-4L	(4) 1 3/4"x4 1/4" LVL	7-12P	7"x11 7/8" PSL
		4-11L	(4) 1 3/4"x11 1/4" LVL	7-14P	7"x14" PSL
		4-12L	(4) 1 3/4"x11 7/8" LVL	7-16P	7"x16" PSL
		4-14L	(4) 1 3/4"x14" LVL	7-18P	7"x18" PSL
		4-16L	(4) 1 3/4"x16" LVL		
		4-18L	(4) 1 3/4"x18" LVL		

* PROVIDE 1/2" PLYWOOD BETWEEN FLIES AT INTERIOR CONDITIONS
 ** REFER TO NOTE 9 OF WOOD FRAMING NOTES ON SHEET S1.0.0 FOR HANGERS TO BE USED IF NOT SPECIFIED ON FRAMING PLANS OR IN FRAMING NOTES. (PLEASE NOTE THAT SOME BEAM TYPES MAY NOT BE SPECIFIED IN THIS PROJECT)
 *** MEMBERS SHOWN DASHED ON FRAMING PLANS TO BE DROPPED BELOW FLOOR CAVITY. MEMBERS SHOWN SOLID ON FRAMING PLANS TO BE WITHIN FLOOR CAVITY UNLESS NOTED OTHERWISE.

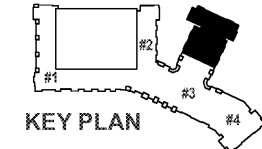
FLOOR FRAMING NOTES:

- INDICATES 18" DEEP OPEN WEB TRUSSES SPACED 24" o.c. MAXIMUM IN UNITS UNLESS NOTED OTHERWISE. TRUSS LAYOUT IS FOR SCHEMATIC PURPOSES ONLY, AND TRUSS SHOP DRAWINGS SHOULD BE REFERENCED FOR LOCATION OF TRUSSES. TRUSSES TO ALIGN AT ALL FLOORS. TRUSS DESIGNER SHALL COORDINATE TRUSS SPACINGS WITH FIXTURE LOCATIONS PER FINISHING DRAWINGS AND MECHANICAL CLOSETS PER MECHANICAL DRAWINGS. TOPPING TO BE 1" MAXIMUM GYPCRETE.
- PROVIDE A MINIMUM OF (2) STUDS (MATCH TYPICAL WALL STUD, SPECIES AND GRADE UNLESS NOTED OTHERWISE) UNLESS NOTED OTHERWISE. 1/4" MINIMUM EACH END OF HEADERS UNLESS NOTED OTHERWISE.
- REFER TO ARCHITECTURAL AND MECHANICAL PLANS FOR FLOOR OPENINGS.
- REFER TO S1.0.0 FOR ADDITIONAL STRUCTURAL NOTES.
- INDICATES LOAD BEARING WALLS. WALLS NOT SHOWN SOLID ARE NOT TO BE USED FOR BEARINGS. REFER TO WALL SCHEDULE FOR GRID GRAYS AND SPACINGS.
- INDICATES 2x8 PRESSURE TREATED JOISTS SPACED 16" o.c. MAXIMUM AT UNIT BALCONIES UNLESS NOTED OTHERWISE ON PLAN. BALCONIES TO HAVE SLOPED (2" MAXIMUM) CONCRETE TOPPING.
- INDICATES 14" OPEN WEB TRUSSES @ 24" o.c. MAXIMUM AT BREEZEWAYS UNLESS NOTED OTHERWISE. BREEZEWAY GIRDERS TO BE PLACED DIRECTLY ON UNIT WALLS. TOPPING TO BE 1" MAXIMUM GYPCRETE.
- FLOOR BEARINGS PER NOTE 9 OF HORIZONTAL AND UPLIFT LOAD SYSTEM NOTES ON SHEET S1.0.2.
- REFER TO SHEARWALL PLANS FOR SHEARWALL LOCATIONS, AND SHEARWALL SCHEDULE FOR REQUIREMENTS.
- REFER TO ARCHITECTURAL DRAWINGS TO CONFIRM LOCATION OF ACCESSIBLE UNITS.
- STEEL STAIRS AND LANDINGS BY STEEL SUPPLIER, PER NOTES ON SHEET S1.0.0.
- FRAMING DESIGNATION BELOW UNIT TYPE INDICATES UNIT FLOOR FRAMING PLAN. UNITS SHOWN ON STRUCTURAL PLANS OCCUR BELOW FLOOR INDICATED IN SHEET TITLE.



Order @ wlan.com

1 PARTIAL FLOOR FRAMING PLAN - BUILDING #3 - 335.44'
 SCALE: 1/8" = 1'-0"



CRABTREE NORTH APTS.
 2251 Charles Drive
 Raleigh, North Carolina
 EYC COMPANIES

03FEB20 PRICING SET

PROJECT	1915
DATE	06NOV19
DRAWN BY	SCG
CHECKED BY	F80

PARTIAL FLOOR FRAMING PLAN - BUILDING #3 - 335.44'

S3.4.3A