

**FLOOR FRAMING NOTES:**

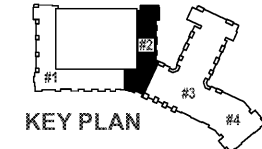
- INDICATES 18" DEEP OPEN WEB TRUSSES SPACED 24" o.c. MAXIMUM IN UNITS UNLESS NOTED OTHERWISE. TRUSS LAYOUT IS FOR SCHEMATIC PURPOSES ONLY, AND TRUSS SHOP DRAWINGS SHOULD BE REFERENCED FOR LOCATION OF TRUSSES. TRUSSES TO ALIGN AT ALL FLOORS. TRUSS DESIGNER SHALL COORDINATE TRUSS SPACING WITH FIXTURE LOCATIONS PER MECHANICAL DRAWINGS, AND MECHANICAL CLOSETS PER MECHANICAL DRAWINGS. TOPPING TO BE MAXIMUM 2" TYPE.
- PROVIDE A MINIMUM OF (2) STUDS (MATCH TYPICAL WALL STUD SPECIES AND GRADE) AT EACH END OF BEAMS UNLESS NOTED OTHERWISE. 1/4" MINIMUM EACH END OF HEADERS, UNLESS NOTED OTHERWISE.
- REFER TO ARCHITECTURAL AND MECHANICAL PLANS FOR FLOOR OPENINGS.
- REFER TO S.I.O.O FOR ADDITIONAL STRUCTURAL NOTES.
- INDICATES LOAD BEARING STUD WALL. WALLS NOT SHOWN SOLID ARE NOT TO BE USED FOR BEARING. REFER TO WALL SCHEDULE FOR STUD GRADE AND SPACING.
- INDICATES 2x8 PRESSURE TREATED JOISTS SPACED 16" o.c. MAXIMUM AT UNIT BALCONIES, UNLESS NOTED OTHERWISE ON PLANS. BALCONIES TO BE DEVELOPED (2" MAXIMUM) CONCRETE TOPPING.
- INDICATES 18" DEEP OPEN WEB TRUSSES SPACED 24" o.c. MAXIMUM AT BREEZEWAYS UNLESS NOTED OTHERWISE. BREEZEWAY HEADERS TO BEAR DIRECTLY ON UNIT WALLS. TOPPING TO BE 1" MAXIMUM GYPCRETE.
- FLOOR SHEATHING PER NOTE "FACE, HORIZONTAL AND UPLIFT LOAD SYSTEM NOTES" ON SHEET S.I.O.O.
- REFER TO SHEARWALL PLANS FOR SHEARWALL LOCATIONS, AND SHEARWALL SCHEDULE FOR REQUIREMENTS.
- REFER TO ARCHITECTURAL DRAWINGS TO CONFIRM LOCATION OF ACCESSIBLE UNITS.
- STEEL STAIRS AND LANDINGS BY STEEL SUPPLIER, PER NOTES ON SHEET S.I.O.O.
- DRAWING DESIGNATION BELOW UNIT TYPE INDICATES UNIT FLOOR FRAMING PLAN. UNITS SHOWN ON STRUCTURAL PLANS OCCUR BELOW FLOOR INDICATED IN SHEET TITLE.

**WOOD BEAM/HEADER SCHEDULE \*\***

MARK	MEMBER***	MARK	MEMBER***	MARK	MEMBER***
2-6	(2) 2x6*	2-7L	(2) 1 3/4"x1 1/4" LVL	35-9P	3 1/2"x4 1/4" PSL
2-8	(2) 2x8*	2-4L	(2) 1 3/4"x4 1/4" LVL	35-11P	3 1/2"x11 1/4" PSL
2-10	(2) 2x10*	2-11L	(2) 1 3/4"x11 1/4" LVL	35-12P	3 1/2"x11 7/8" PSL
2-12	(2) 2x12*	2-12L	(2) 1 3/4"x11 7/8" LVL	35-14P	3 1/2"x14" PSL
		2-14L	(2) 1 3/4"x4" LVL	35-16P	3 1/2"x16" PSL
3-6	(3) 2x6*	2-16L	(2) 1 3/4"x6" LVL	35-18P	3 1/2"x18" PSL
3-8	(3) 2x8*	2-18L	(2) 1 3/4"x8" LVL		
3-10	(3) 2x10*			5-4P	5 1/4"x4 1/4" PSL
3-12	(3) 2x12*	3-7L	(3) 1 3/4"x1 1/4" LVL	5-11P	5 1/4"x11 1/4" PSL
		3-9L	(3) 1 3/4"x4 1/4" LVL	5-12P	5 1/4"x11 7/8" PSL
4-6	(4) 2x6*	3-11L	(3) 1 3/4"x11 1/4" LVL	5-14P	5 1/4"x14" PSL
4-8	(4) 2x8*	3-12L	(3) 1 3/4"x11 7/8" LVL	5-16P	5 1/4"x16" PSL
4-10	(4) 2x10*	3-14L	(3) 1 3/4"x4" LVL	5-18P	5 1/4"x18" PSL
4-12	(4) 2x12*	3-16L	(3) 1 3/4"x6" LVL		
		3-18L	(3) 1 3/4"x8" LVL	7-4P	7"x4 1/4" PSL
				7-11P	7"x11 1/4" PSL
		4-7L	(4) 1 3/4"x1 1/4" LVL	7-12P	7"x11 7/8" PSL
		4-9L	(4) 1 3/4"x4 1/4" LVL	7-14P	7"x14" PSL
		4-11L	(4) 1 3/4"x11 1/4" LVL	7-16P	7"x16" PSL
		4-12L	(4) 1 3/4"x11 7/8" LVL	7-18P	7"x18" PSL
		4-14L	(4) 1 3/4"x4" LVL		
		4-16L	(4) 1 3/4"x6" LVL		
		4-18L	(4) 1 3/4"x8" LVL		

\* PROVIDE 1/2" PLYWOOD BETWEEN FLIES AT INTERIOR CONDITIONS  
 \*\* REFER TO NOTE 4 OF 'WOOD FRAMING NOTES' ON SHEET S.I.O.O FOR HANGERS TO BE USED IF NOT SPECIFIED ON FRAMING PLANS OR IN FRAMING NOTES. (PLEASE NOTE THAT SOME BEAM TYPES MAY NOT BE SPECIFIED IN THIS PROJECT)  
 \*\*\* MEMBERS SHOWN DASHED ON FRAMING PLANS TO BE DROPPED BELOW FLOOR CAVITY. MEMBERS SHOWN SOLID ON FRAMING PLANS TO BE WITHIN FLOOR CAVITY UNLESS NOTED OTHERWISE.

**FLOOR FRAMING PLAN - BUILDING #2 - 335.44'**  
 SCALE: 1/8" = 1'-0"



**CRABTREE NORTH APTS.**  
 2251 Charles Drive  
 Raleigh, North Carolina  
 EYC COMPANIES

**03FEB20 PRICING SET**

PROJECT 1915  
 DATE 06NOV19  
 DRAWN BY SCG  
 CHECKED BY F80

FLOOR FRAMING PLAN - BUILDING #2 - 335.44'

**S3.4.2**