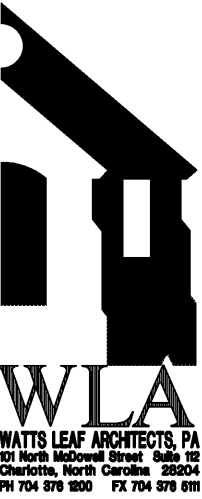




Structural Consulting Group, LLC
 6250 shiloh road - suite 20 - alpharetta, ga 30005
 phone (678) 513-4242 fax (678) 513-4232
 SCG Project No. 191003
 N.C. C.O.A.: P-0573



WLA
 WATTS LEAF ARCHITECTS, PA
 171 North McDowell Street, Suite 102
 Charlotte, North Carolina 28204
 PH 704 376 1800 FX 704 376 6111

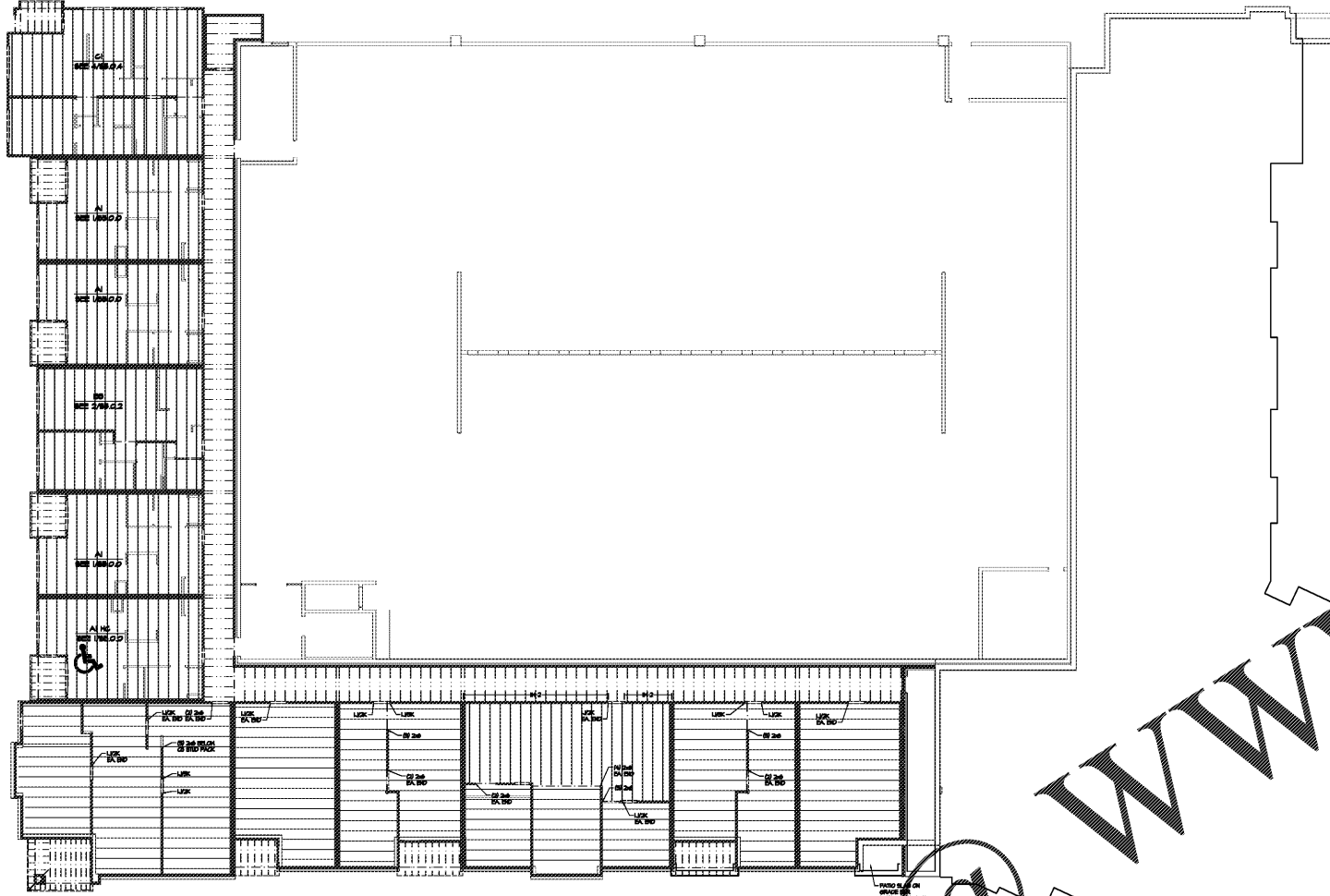
CRABTREE NORTH APTS.
 2251 Charles Drive
 Raleigh, North Carolina
 EYC COMPANIES

03FEB20
 PRICING
 SET

PROJECT 1915
 DATE 06NOV19
 DRAWN BY SCG
 CHECKED BY F80

OVERALL FLOOR FRAMING
 PLAN - 300.37'

S3.1.0



WWW.LDILine.com

FLOOR FRAMING NOTES:

- INDICATES 18" DEEP OPEN WEB TRUSSES SPACED 24" o.c. MAXIMUM IN UNITS UNLESS NOTED OTHERWISE. TRUSS LAYOUT IS FOR SCHEMATIC PURPOSES ONLY, AND TRUSS SHOP DRAWINGS SHOULD BE REFERENCED FOR LOCATION OF TRUSSES. TRUSSES TO ALIGN AT ALL FLOORS. TRUSS DESIGNER SHALL COORDINATE TRUSS SPACING WITH FUTURE LOCATIONS PER PLUMBING DRAWINGS, AND MECHANICAL CLOSETS PER MECHANICAL DRAWINGS. TOPPING TO BE 1" MAXIMUM GYPCRETE.
- PROVIDE A MINIMUM OF (2) STUDS (MATCH TYPICAL WALL STUD, SPECIES AND GRADE) AT EACH END BEAMS UNLESS NOTED OTHERWISE. 1/4"K MINIMUM EACH END OF HEADERS, UNLESS NOTED OTHERWISE.
- REFER TO ARCHITECTURAL AND MECHANICAL PLANS FOR FLOOR OPENINGS.
- REFER TO S.I.O.O FOR ADDITIONAL STRUCTURAL NOTES.
- INDICATES LOAD BEARING STUD WALL. WALLS NOT SHOWN SOLID ARE NOT TO BE USED FOR BEARINGS. REFER TO WALL SCHEDULE FOR STUD GRADE AND SPACING.
- INDICATES 2x8 PRESSURE TREATED JOISTS SPACED 24" o.c. MAXIMUM AT UNIT BALCONIES, UNLESS NOTED OTHERWISE ON PLANS. BALCONIES TO HAVE SLOPED (2" MAXIMUM) CONCRETE TOPPING.
- INDICATES 18" OPEN WEB TRUSSES 24" o.c. MAXIMUM AT BREEZEWAYS UNLESS NOTED OTHERWISE. BREEZEWAY GIRDERS TO BEAR DIRECTLY ON UNIT WALLS. TOPPING TO BE 1" MAXIMUM GYPCRETE.
- FLOOR SHEATHING PER NOTE 4 OF HORIZONTAL AND UPLIFT LOAD SYSTEM NOTES' ON SHEET S.I.O.O.
- REFER TO SHEARWALL PLAN FOR SHEARWALL LOCATIONS, AND SHEARWALL SCHEDULE FOR REQUIREMENTS.
- REFER TO ARCHITECTURAL DRAWINGS TO CONFIRM LOCATION OF ACCESSIBLE UNITS.
- STEEL STAIRS AND LANDINGS BY STEEL SUPPLIER, PER NOTES ON SHEET S.I.O.O.
- DRAWING DESIGNATION BELOW UNIT TYPE INDICATES UNIT FLOOR FRAMING PLAN. UNITS SHOWN ON STRUCTURAL PLANS OCCUR BELOW FLOOR. INDICATED IN SHEET TITLE.

WOOD BEAM/HEADER SCHEDULE **

MARK	MEMBER**	MARK	MEMBER***	MARK	MEMBER***
2-6	(2) 2x8*	2-TL	(2) 1 3/4"x11 1/4" LVL	35-4P	3 1/2"x4 1/4" PSL
2-8	(2) 2x8*	2-RL	(2) 1 3/4"x9 1/4" LVL	35-11P	3 1/2"x11 1/4" PSL
2-10	(2) 2x10*	2-HL	(2) 1 3/4"x11 1/4" LVL	35-12P	3 1/2"x11 7/8" PSL
2-12	(2) 2x12*	2-L2L	(2) 1 3/4"x11 7/8" LVL	35-14P	3 1/2"x14" PSL
3-6	(3) 2x6*	2-HL	(2) 1 3/4"x14" LVL	35-16P	3 1/2"x16" PSL
3-8	(3) 2x8*	2-HL	(2) 1 3/4"x16" LVL	35-18P	3 1/2"x18" PSL
3-10	(3) 2x10*	2-HL	(2) 1 3/4"x18" LVL	5-4P	5 1/4"x4 1/4" PSL
3-12	(3) 2x12*	3-TL	(3) 1 3/4"x11 1/4" LVL	5-11P	5 1/4"x11 1/4" PSL
		3-RL	(3) 1 3/4"x9 1/4" LVL	5-12P	5 1/4"x11 7/8" PSL
4-6	(4) 2x6*	3-HL	(3) 1 3/4"x11 1/4" LVL	5-14P	5 1/4"x14" PSL
4-8	(4) 2x8*	3-L2L	(3) 1 3/4"x11 7/8" LVL	5-16P	5 1/4"x16" PSL
4-10	(4) 2x10*	3-HL	(3) 1 3/4"x14" LVL	5-18P	5 1/4"x18" PSL
4-12	(4) 2x12*	3-HL	(3) 1 3/4"x16" LVL	1-4P	7"x4 1/4" PSL
		3-HL	(3) 1 3/4"x18" LVL	1-11P	7"x11 1/4" PSL
		4-TL	(4) 1 3/4"x11 1/4" LVL	1-12P	7"x11 7/8" PSL
		4-RL	(4) 1 3/4"x9 1/4" LVL	1-14P	7"x14" PSL
		4-HL	(4) 1 3/4"x11 1/4" LVL	1-16P	7"x16" PSL
		4-L2L	(4) 1 3/4"x11 7/8" LVL	1-18P	7"x18" PSL
		4-HL	(4) 1 3/4"x14" LVL		
		4-HL	(4) 1 3/4"x16" LVL		
		4-HL	(4) 1 3/4"x18" LVL		

- * PROVIDE 1/2" PLYWOOD BETWEEN FLIES AT INTERIOR CONDITIONS.
- ** REFER TO NOTE 4 OF FLOOR FRAMING NOTES' ON SHEET S.I.O.O FOR HANGERS TO BE USED IF NOT SPECIFIED ON FRAMING PLANS OR IN FRAMING NOTES. (PLEASE NOTE THAT SOME BEAM TYPES MAY NOT BE SPECIFIED IN THIS PROJECT)
- *** MEMBERS SHOWN DASHED ON FRAMING PLANS TO BE DROPPED BELOW FLOOR CAVITY. MEMBERS SHOWN SOLID ON FRAMING PLANS TO BE WITHIN FLOOR CAVITY UNLESS NOTED OTHERWISE.

1 OVERALL FLOOR FRAMING PLAN - 300.37'
 SCALE: 1/16" = 1'-0"

