

SEE SHEET A4.09 FOR  
ADDIT. DIMEN. INFO

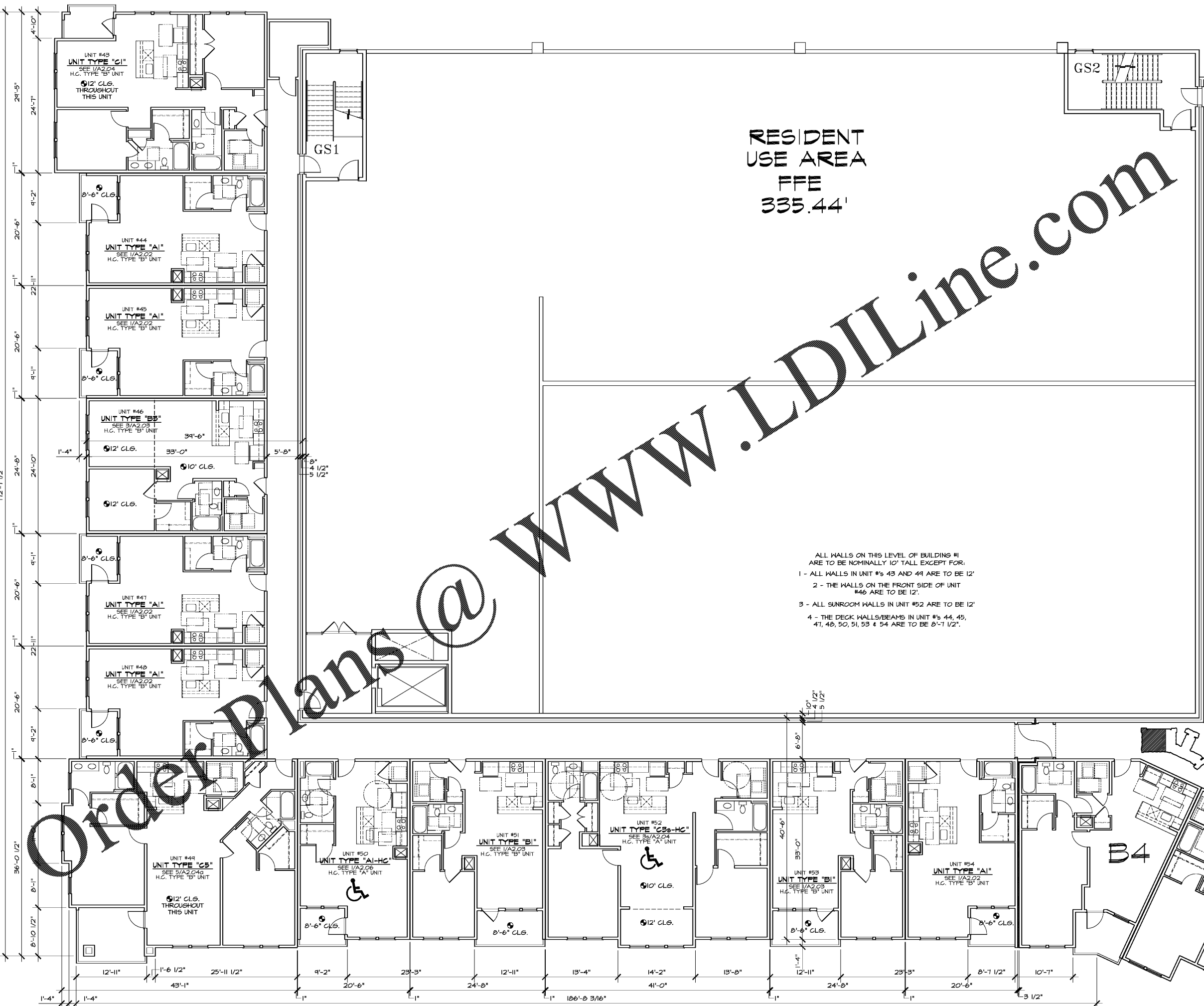
**GENERAL NOTES**  
The Architectural drawings must be used in conjunction with the Civil, Structural, MEP, Fire Protection drawings and specifications. The Contractor is responsible for all coordination between the drawings. Discrepancies should be brought to the attention of the architect.

The Contractor is advised that the available space for routing all electrical, mechanical, plumbing, fire protection and communications piping, conduit, trays and ductwork may be limited in many locations. The Contractor shall coordinate all of the trades work and make adjustments, with the Architect's approval to the routing of these items as required. Any rework resulting from the failure to coordinate will be performed by the Contractor at no additional cost.

All dimensions are from face of stud, u.n.o.  
All penetrations of fire rated assemblies shall be fire blocked and sealed per UL approved methods.  
All concealed fire rated assemblies shall be provided with signage indicating the type of assembly, and the fire rating in letters no smaller than 2" high. See 101.2.

**FIRE RATINGS LEGEND**

<b>THREE HOUR RATED ASSEMBLIES:</b>
3 HOUR RATED FIRE WALL
3FW
3FA ASH 2800 3-HR FIREWALL SEPARATING TYPE-2A FIRE AREA - NCS&C 12.2.11
3 HOUR RATED CONCRETE SLABS
SEE NCS&C SECTION 12.10.1
SLABS BETWEEN STORAGE LEVEL AND APT. UNITS ABOVE BUILDING #5 (ONLY)
3 HOUR RATED CONCRETE COLUMNS
SEE NCS&C SECTION 12.10.1
COLUMNS SUPPORTING 3 HOUR RATED SLABS
<b>TWO HOUR RATED ASSEMBLIES:</b>
2 HOUR RATED FIRE WALL
2FW
UL U-210 2-HR FIREWALL SEPARATING TYPE-5A FIRE AREA
2 HOUR RATED FIRE BARRIER
2FB
UR00 - ELEVATOR AND STAIR & MECH. SHAFTS
2 HOUR RATED CEILING
2HC
2 HOUR RATED CONCRETE SLABS
SEE NCS&C SECTION 12.10.1
SLAB BETWEEN CLUBHOUSE AND APT. UNITS ABOVE BUILDING #5 (ONLY)
2 HOUR RATED CONCRETE COLUMNS
SEE NCS&C TABLE 12.10.1
COLUMNS SUPPORTING 2 HOUR RATED SLABS
<b>ONE HOUR RATED ASSEMBLIES:</b>
1 HOUR RATED FIRE BARRIER
1FB
UL U-300 1-HR FIRE BARRIER ADJACENT TO ENCLOSED GARAGE HALLS
1 HOUR RATED FIRE PARTITION
1FP
UL U-341 1-HR CORRIDOR WALLS - BUILT TO ACHIEVE ST00C RATING PER NEBS LISTED IN UL INCL. FERRING CHANNELS/CLIPS ON CORRIDOR SIDE OF ASSEMBLY. OSD PANELS TO BE PLACED BETWEEN STUD ENDS AND CLG'S AT BREAK WALL LOCATIONS. COORDINATE WITH THE STRUCTURAL DRAWINGS.
1 HOUR RATED STRUCTURAL AND NON-STRUCTURAL ELEMENTS
1HR
UL U-200 1-HR RATED EXTERIOR BEARING WALL
UL U-300 1-HR RATED UNIT INTERIOR BEARING WALL AND ELEVATOR LOBBIES
1 HR RATED ROOF/CEILING ASSEMBLY, SEE A011 SYSTEM ASSOCIATION FILE NO. R0 2603
UL L-520 1-HR RATED FLOOR/CEILING ASSEMBLY



RESIDENT  
USE AREA  
FFE  
335.44'

- ALL WALLS ON THIS LEVEL OF BUILDING #1 ARE TO BE NOMINALLY 10' TALL EXCEPT FOR:
- 1 - ALL WALLS IN UNIT #s 43 AND 49 ARE TO BE 12'
  - 2 - THE WALLS ON THE FRONT SIDE OF UNIT #46 ARE TO BE 12'
  - 3 - ALL SUNROOM WALLS IN UNIT #52 ARE TO BE 12'
  - 4 - THE DECK WALLS/BEAMS IN UNIT #s 44, 45, 47, 48, 50, 51, 53 & 54 ARE TO BE 8'-1 1/2'.

**WLA**  
WATTS LEAF ARCHITECTS, PA  
101 North McDowell Street, Suite 112  
Charlotte, North Carolina 28204  
PH 704 376 1200 FX 704 376 5111

**CRABTREE NORTH APTS.**  
2251 Charles Drive  
Raleigh, North Carolina  
EYC COMPANIES

PROJECT	1915
DATE	29JAN20
DRAWN BY	WJP
CHECKED BY	CMW
FOURTH LEVEL PLAN - BUILDING #1	
<b>A4.14</b>	