

SEE SHEET A4.09 FOR  
ADDIT. DIMEN. INFO

**GENERAL NOTES**  
The Architectural drawings must be used in conjunction with the CIVIL, Structural, MEP, Fire Protection drawings and specifications. The Contractor is responsible for all coordination between the drawings. Discrepancies should be brought to the attention of the architect.

The Contractor is advised that the available space for routing all electrical, mechanical, plumbing, fire protection and communications piping, conduit, trays and ductwork may be limited in many locations. The Contractor shall coordinate all of the trades work and make adjustments, with the Architect's approval to the routing of these items as required. Any rework resulting from the failure to coordinate will be performed by the Contractor at no additional cost.

All dimensions are from face of stud, u.n.o.  
All penetrations of fire rated assemblies shall be blocked and sealed per UL approved methods.

All concealed fire rated assemblies shall be provided with signage indicating the type of assembly and the fire rating in hours in letters no smaller than 2" high. See 101.2.

**FIRE RATING LEGEND**

**THREE HOUR RATED ASSEMBLIES:**

3 HOUR RATED FIRE MALL  
3FW 3FW 3FW

6A ASH 2600 3-HR FIREHALL SEPARATING TYPE-2A FIRE AREA - 105836 121211

3 HOUR RATED CONCRETE SLABS  
SEE N.C.S.B.C. SECTION 12101  
SLABS BETWEEN STORAGE LEVEL AND APT. UNITS ABOVE (BUILDING #2 ONLY)

3 HOUR RATED CONCRETE COLUMNS  
SEE N.C.S.B.C. SECTION 12101  
COLUMNS SUPPORTING 3 HOUR RATED SLABS

**TWO HOUR RATED ASSEMBLIES:**

2 HOUR RATED FIRE MALL  
2FW 2FW 2FW

UL U-210 2-HR FIREHALL SEPARATING TYPE-2A FIRE AREA

2 HOUR RATED FIRE BARRIER  
2FB 2FB 2FB

U-205 - ELEVATOR AND STAIR & MECH. SHAFTS

2 HOUR RATED CEILING  
2A FILE NO. FC 5129

2 HOUR RATED CONCRETE SLABS  
SEE N.C.S.B.C. SECTION 12101  
SLAB BETWEEN GUILDHOUSE AND APT. UNITS ABOVE (BUILDING #2 ONLY)

2 HOUR RATED CONCRETE COLUMNS  
SEE N.C.S.B.C. TABLE 12101  
COLUMNS SUPPORTING 2 HOUR RATED SLABS

**ONE HOUR RATED ASSEMBLIES:**

1 HOUR RATED FIRE BARRIER  
1FB 1FB 1FB

UL U-305 1-HR FIRE BARRIER ADJACENT TO ENCLOSED GARAGE WALLS

1 HOUR RATED FIRE PARTITION  
1FP 1FP 1FP

UL U-305 1-HR FIRE BARRIER ADJACENT TO ENCLOSED GARAGE WALLS

UL U-341 1-HR TENANT SEPARATION WALLS

UL U-305 1-HR CORRIDOR WALLS - BUILT TO ACHIEVE 1 HOUR RATING PER TEST LISTED IN UL INCL. FIBERS CHANNELS/GLIPS ON CORRIDOR SIDE OF ASSEMBLY. CAB PANELS TO BE PLACED BETWEEN STUD ENDS AND GLIPS AT STAIR HALL LOCATIONS. COORDINATE WITH THE STRUCTURAL DRAWINGS.

1 HOUR RATED STRUCTURAL AND NON-STRUCTURAL ELEMENTS

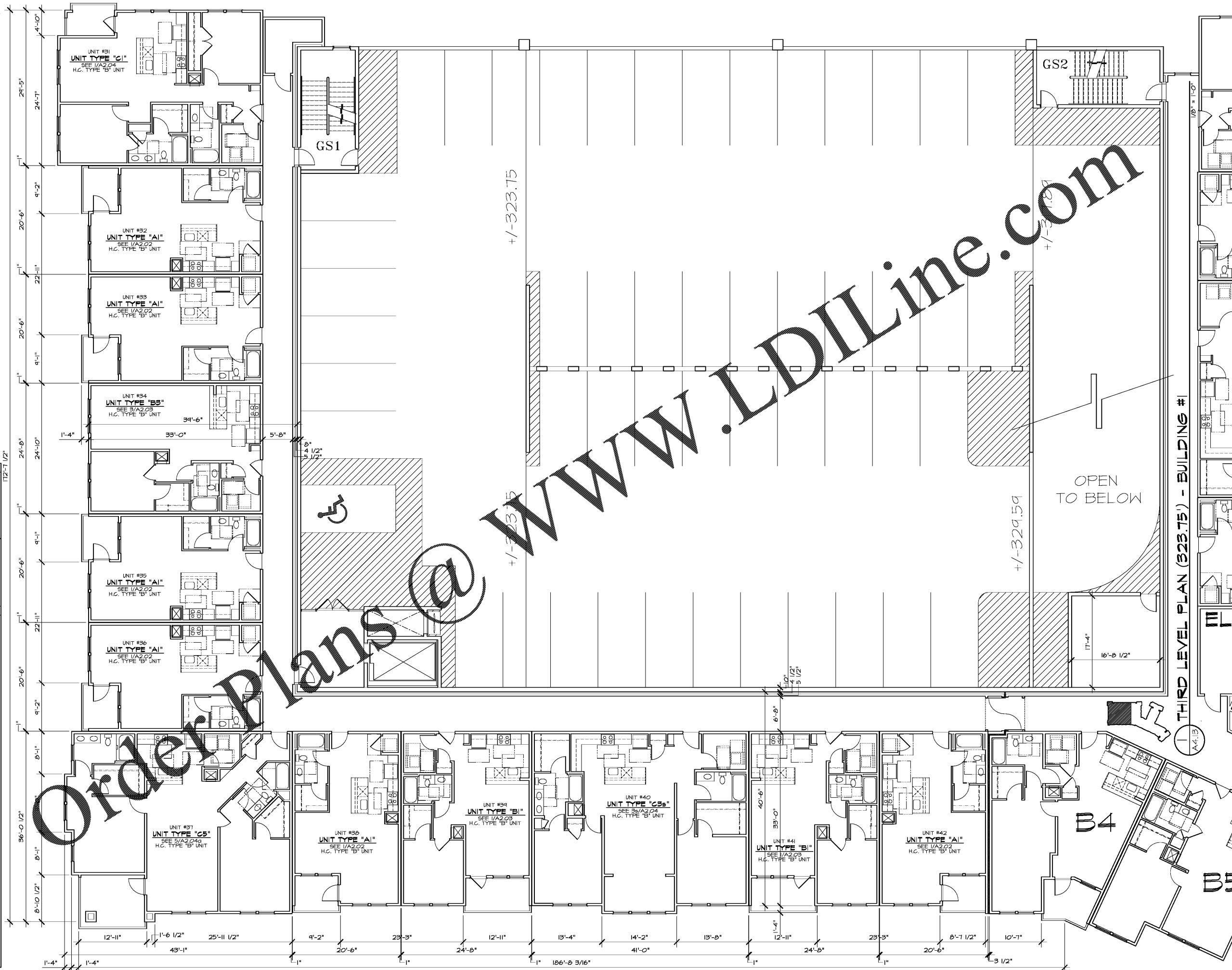
1HR 1HR 1HR

UL U-356 1-HR RATED EXTERIOR BEARING WALL

UL U-305 1-HR RATED UNIT INTERIOR BEARING WALL AND ELEVATOR LOBBIES

1-HR RATED ROOF/CEILING ASSEMBLY. SEE A-011 SYSTEM ASSOCIATION FILE NO. RS 2629

UL L-528 1-HR RATED FLOOR/CEILING ASSEMBLY



**WLA**  
WATTS LEAF ARCHITECTS, PA  
101 North McDowell Street, Suite 112  
Charlotte, North Carolina 28204  
PH 704 376 1200 FX 704 376 5111

**CRABTREE NORTH APTS.**  
2251 Charles Drive  
Raleigh, North Carolina  
EYC COMPANIES

PROJECT 1915  
DATE 30DEC19  
DRAWN BY WJP  
CHECKED BY CMW

THIRD LEVEL PLAN - BUILDING #1

**A4.13**