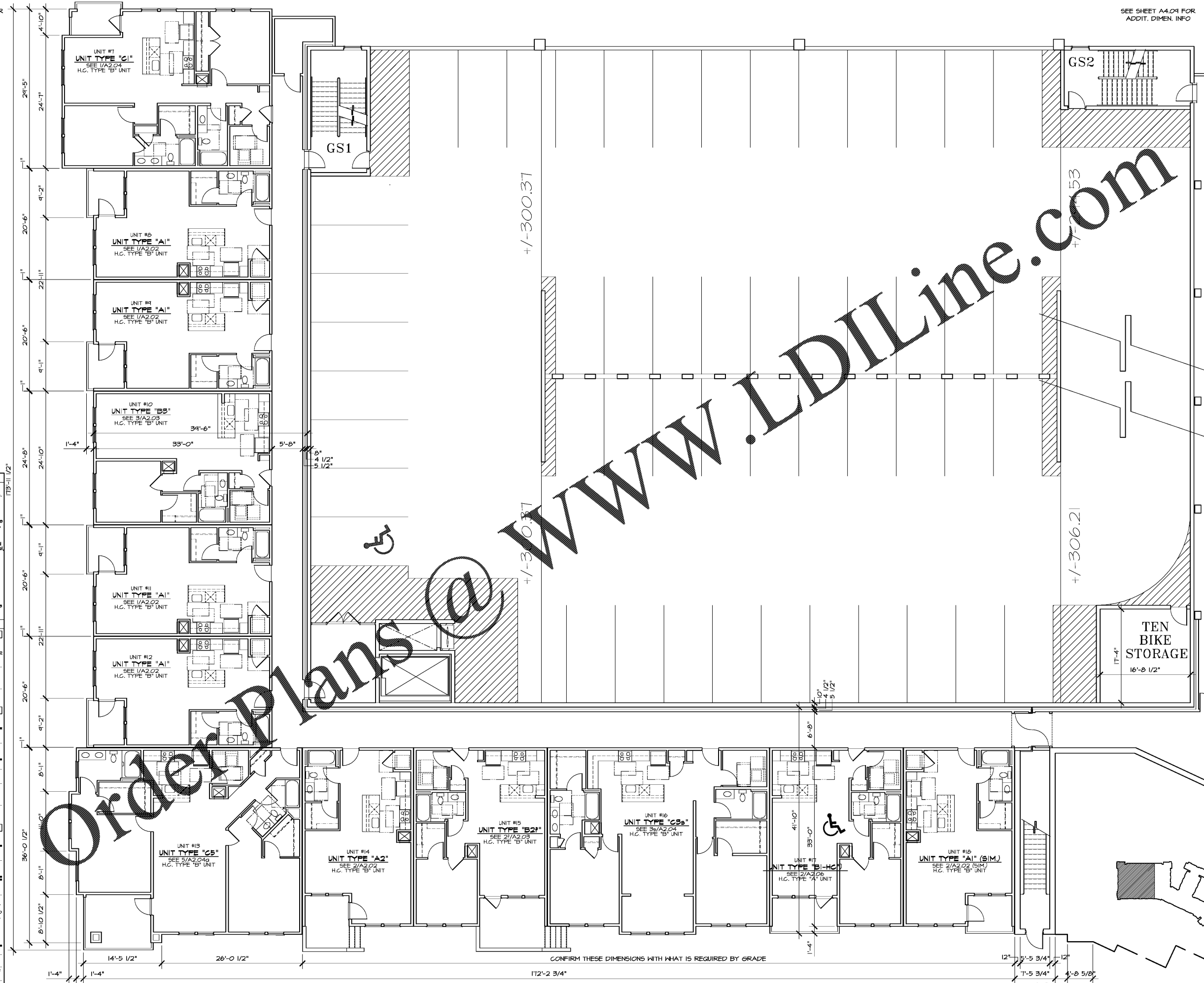
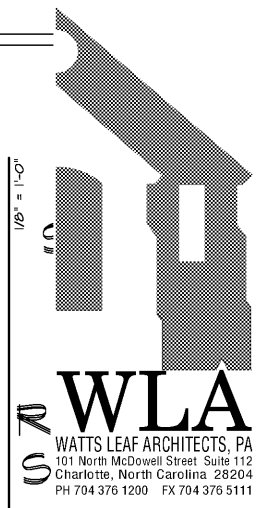


SEE SHEET A4.04 FOR
ADDIT. DIMEN. INFO

SEE SHEET A4.04 FOR
ADDIT. DIMEN. INFO



- GENERAL NOTES**
- The Architectural drawings must be used in conjunction with the Civil, Structural, MEP, Fire Protection drawings and specifications. The Contractor is responsible for all coordination between the drawings. Discrepancies should be brought to the attention of the architect.
- The Contractor is advised that the available space for routing all electrical, mechanical, plumbing, fire protection and communications piping, conduit, trays and ductwork may be limited in many locations. The Contractor shall coordinate all of the trades work and make adjustments, with the Architect's approval, to the routing of these items as required. Any network resulting from the failure to coordinate will be performed by the Contractor at no additional cost.
- All dimensions are from face of stud, v.n.o.
- All penetrations of fire rated assemblies shall be fire blocked and sealed per UL approved methods.
- All concealed fire rated assemblies shall be provided with signage indicating the type of assembly and the fire rating in letters no smaller than 2" high. See 101.2.
- FIRE RATING LEGEND**
- THREE HOUR RATED ASSEMBLIES:**
- 3 HOUR RATED FIRE WALL
 - 3W
 - 6A ASH 2800 3-HR FIREWALL SEPARATING TYPE-SA FIRE AREA - (CGS 121.2.1)
 - 3 HOUR RATED CONCRETE SLABS
 - SEE N.C.S.B.C. SECTION 121.0
 - SLABS BETWEEN STORAGE LEVEL AND APT. UNITS ABOVE (BUILDING #2 ONLY)
 - 3 HOUR RATED CONCRETE COLUMNS
 - SEE N.C.S.B.C. SECTION 121.0
 - COLUMNS SUPPORTING 3 HOUR RATED SLABS
- TWO HOUR RATED ASSEMBLIES:**
- 2 HOUR RATED FIRE WALL
 - 2FW
 - 2FW
 - 2FW
 - UL U-210 2-HR FIREWALL SEPARATING TYPE-SA FIRE AREA
 - 2 HOUR RATED FIRE BARRIER
 - 2FB
 - 2FB
 - 2FB
 - U-105 - ELEVATOR AND STAIR 4 HIGH SHAFTS
 - 2 HOUR RATED CEILING
 - 2HC
 - 2HC
 - 2HC
 - 2 HOUR RATED CONCRETE SLABS
 - SEE N.C.S.B.C. SECTION 121.0
 - SLABS BETWEEN CLICHOUSE AND APT. UNITS ABOVE (BUILDING #4 ONLY)
 - 2 HOUR RATED CONCRETE COLUMNS
 - SEE N.C.S.B.C. SECTION 121.0
 - COLUMNS SUPPORTING 2 HOUR RATED SLABS
- ONE HOUR RATED ASSEMBLIES:**
- 1 HOUR RATED FIRE BARRIER
 - 1FB
 - 1FB
 - 1FB
 - UL U-305 1-HR FIRE BARRIER ADJACENT TO ENCLOSED GARAGE WALLS
 - 1 HOUR RATED FIRE PARTITION
 - 1FP
 - 1FP
 - 1FP
 - d31
 - d31
 - d31
 - UL U-341 1-HR TENANT SEPARATION WALLS
 - UL U-305 1-HR CORRIDOR WALLS - BUILT TO ACHIEVE STOPS MATING PER REGS. LISTED IN I.L. INCL. FURRING CHANNELS/CLIPS ON CORRIDOR SIDE OF ASSEMBLY. (SEE PANELS TO BE PLACED BETWEEN STUD ENDS AND CLIPS AT SHEAR WALL LOCATIONS, COORDINATE WITH THE STRUCTURAL)
 - 1 HOUR RATED STRUCTURAL AND NON-STRUCTURAL ELEMENTS
 - 1HR
 - 1HR
 - 1HR
 - UL U-356 1-HR RATED EXTERIOR BEARING WALL
 - UL U-305 1-HR RATED UNIT INTERIOR BEARING WALL AND ELEVATOR LOBBIES
 - 1HR RATED ROOF/CEILING ASSEMBLY. SEE ADJ1 GYPSUM ASSOCIATION FILE NO. RG 2809
 - UL L-520 1-HR RATED FLOOR/CEILING ASSEMBLY



CRABTREE NORTHTM APTS.
 2251 Charles Drive
 Raleigh, North Carolina
 EYC COMPANIES

FIRST LEVEL PLAN (300.37) - BUILDING #1

PROJECT 1915
 DATE 29JAN20
 DRAWN BY WJP
 CHECKED BY CMW

FIRST LEVEL
 PLAN - BUILDING #1

A4.11