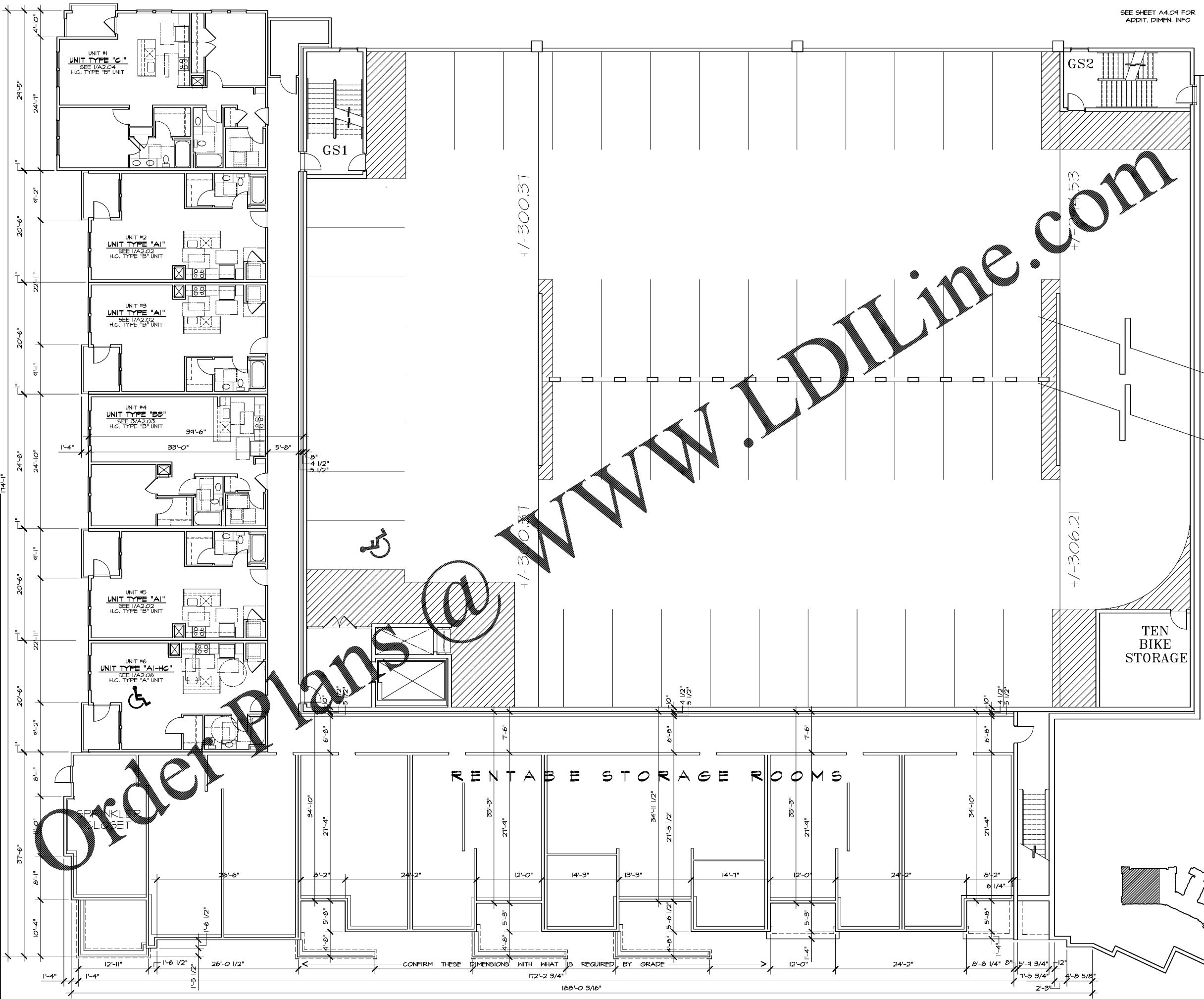


SEE SHEET A4.09 FOR  
ADDIT. DIMEN. INFO

SEE SHEET A4.09 FOR  
ADDIT. DIMEN. INFO



**GENERAL NOTES**

The Architectural drawings must be used in conjunction with the Civil Structural, MEP, Fire Protection drawings and specifications. The Contractor is responsible for all coordination between the drawings. Discrepancies should be brought to the attention of the architect.

The Contractor is advised that the available space for routing all electrical, mechanical, plumbing fire protection and communications piping, conduit, trays and ductwork may be limited in many locations. The Contractor shall coordinate all of the trades work and make adjustments, with the Architect's approval, to the routing of these items as required. Any rework resulting from the failure to coordinate will be performed by the Contractor at no additional cost.

All dimensions are from face of stud, u.n.o.

All penetrations of fire rated assemblies shall be fire blocked and sealed per UL approved methods.

All concealed fire rated assemblies shall be provided with signage indicating the type of assembly and the fire rating in letters no smaller than 2" high. See 701.2.

**FIRE RATING LEGEND**

**THREE HOUR RATED ASSEMBLIES:**

3 HOUR RATED FIRE HALL  
3FW 3FW

3 HOUR RATED CONCRETE SLABS  
SEE N.C.S.B.C. SECTION 1211(U)  
SLABS BETWEEN STORAGE LEVEL AND APT. UNITS ABOVE BUILDING #4 ON-7

3 HOUR RATED CONCRETE COLUMNS  
SEE N.C.S.B.C. SECTION 1211(U)  
COLUMNS SUPPORTING 3 HOUR RATED SLABS

**TWO HOUR RATED ASSEMBLIES:**

2 HOUR RATED FIRE HALL  
2FW 2FW

UL U-210 2-HR FIREHALL SEPARATING TYPE 5A FIRE AREA

2 HOUR RATED FIRE BARRIER  
2FB 2FB

UL U-205 1-HR FIRE BARRIER ADJACENT TO ENCLOSED GARAGE HALLS

2 HOUR RATED CEILING  
SA FILE NO. 10 572

2 HOUR RATED CONCRETE SLABS  
SEE N.C.S.B.C. SECTION 1211(U)  
SLAB BETWEEN GLENDEN AND APT. UNITS ABOVE BUILDING #4 ON-7

2 HOUR RATED CONCRETE COLUMN  
SEE N.C.S.B.C. TABLE 1211(I)  
COLUMNS SUPPORTING 2 HOUR RATED SLABS

**ONE HOUR RATED ASSEMBLIES:**

1 HOUR RATED FIRE BARRIER  
1FB 1FB

UL U-305 1-HR FIRE BARRIER ADJACENT TO ENCLOSED GARAGE HALLS

1 HOUR RATED FIRE PARTITION  
1FP 1FP

UL U-341 1-HR TENANT SEPARATION WALLS

UL U-305 1-HR CORRIDOR WALLS - BUILT TO ACHIEVE 5705 RATING PER REFS. LISTED IN UL INCL. FLOORING CHANNELS/CLIPS ON CORRIDOR SIDE OF ASSEMBLY. GSB PANELS TO BE PLACED BETWEEN STUD ENDS AND AT SHEAR WALL LOCATIONS, COORDINATE WITH THE STRUCTURAL ENGINEER.

1 HOUR RATED STAIR AND NON-STRUCTURAL ELEMENTS  
1HR 1HR

UL U-356 1-HR RATED EXTERIOR BEARING WALL

UL U-305 1-HR RATED UNIT INTERIOR BEARING WALL AND ELEVATOR LOBBIES

1-HR RATED ROOF/CEILING ASSEMBLY, SEE A017 ©FISH ASSOCIATION FILE NO. NC 2623

Order Plans @

WWW.LDILine.com



**WLA**  
WATTS LEAF ARCHITECTS, PA  
101 North McDowell Street, Suite 112  
Charlotte, North Carolina 28204  
PH 704 376 1200 FX 704 376 5111

**CRABTREE NORTH APTS.**  
2251 Charles Drive  
Raleigh, North Carolina  
EYC COMPANIES

BASEMENT LEVEL PLAN (200.69') - BUILDING #1

PROJECT	1915
DATE	29JAN20
DRAWN BY	WJP
CHECKED BY	CMW

BASEMENT LEVEL PLAN - BUILDING #1

**A4.10**