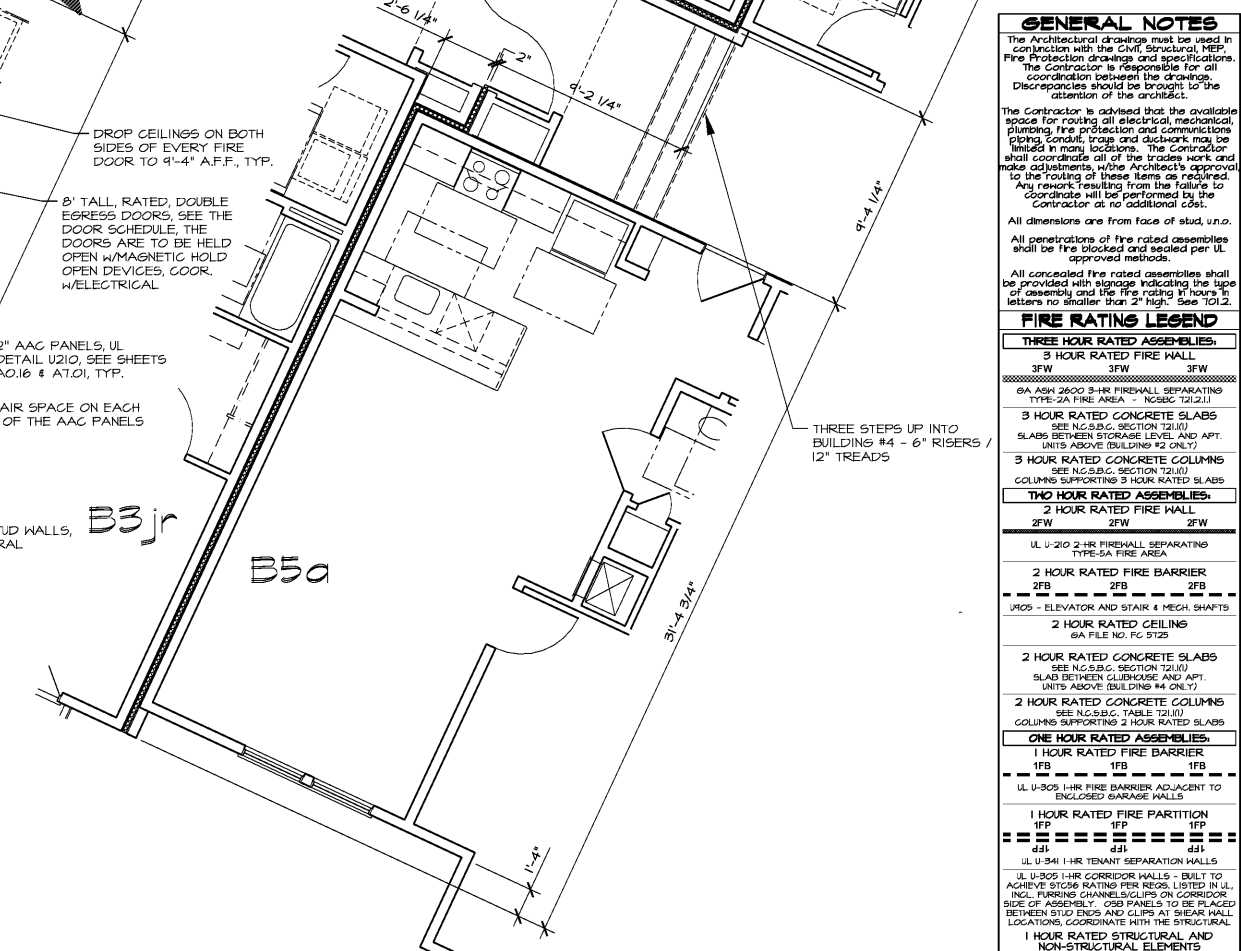
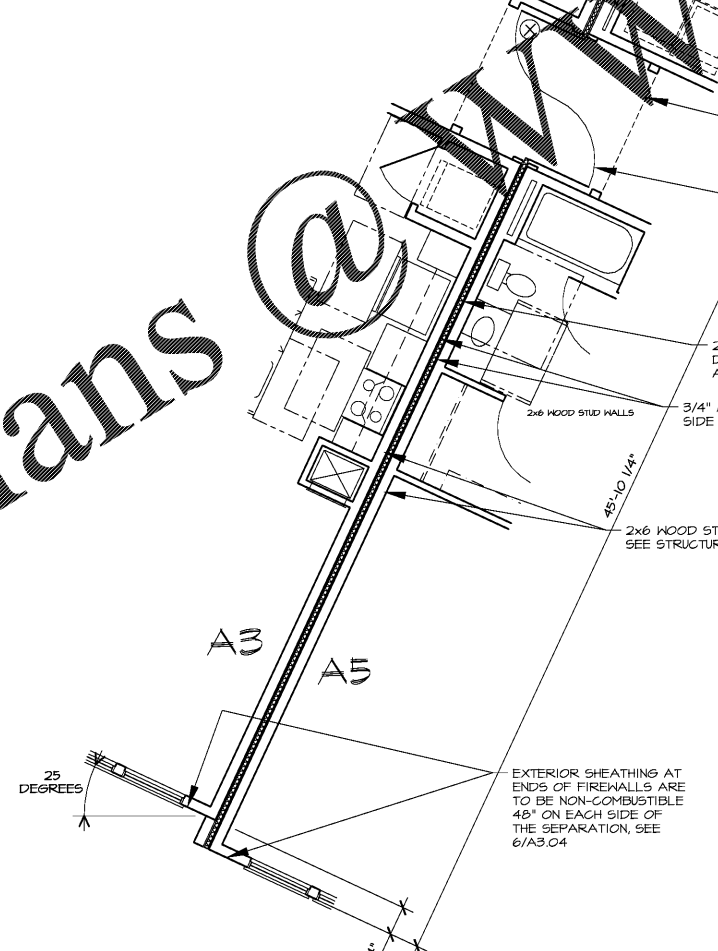
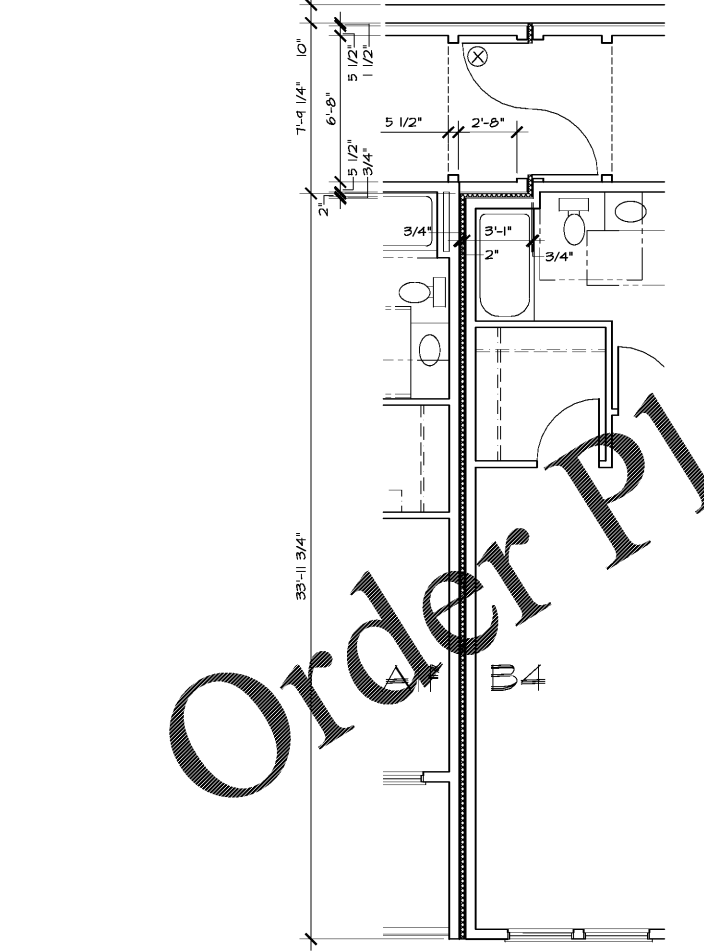
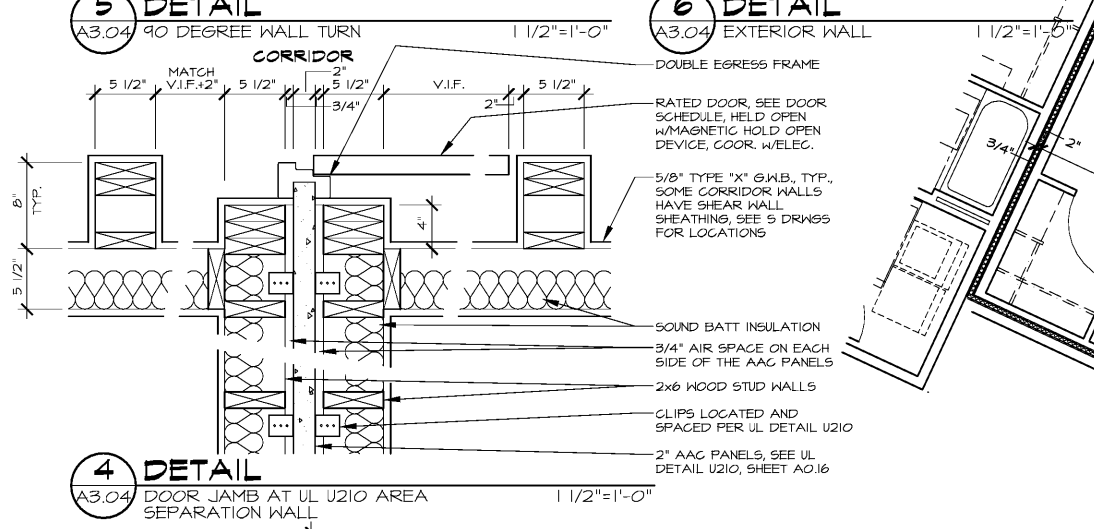
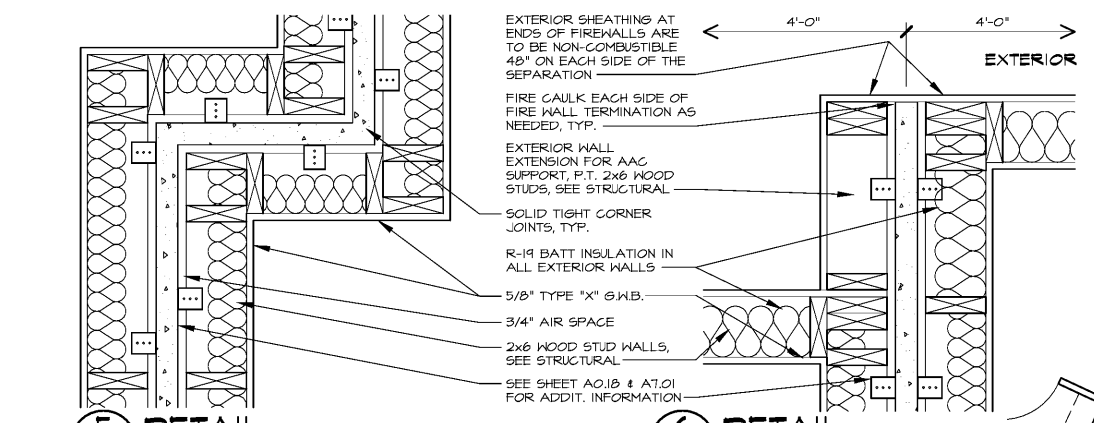


**WLA**  
 WATTS LEAF ARCHITECTS, PA  
 101 North McDowell Street, Suite 112  
 Charlotte, North Carolina 28204  
 PH 704 376 1200 FX 704 376 5114

**CRABTREE NORTH APTS.**  
 2251 Charles Drive  
 Raleigh, North Carolina  
 EYC COMPANIES



**GENERAL NOTES**

The Architectural drawings must be used in conjunction with the Civil, Structural, MEP, Fire Protection drawings and specifications. The Contractor is responsible for all coordination between the drawings. Discrepancies should be brought to the attention of the architect.

The Contractor is advised that the available space for routing all electrical, mechanical, plumbing, fire protection and communications piping, conduits, trays and ductwork may be limited in many locations. The Contractor shall coordinate all of the trades work and make adjustments, with the Architect's approval to the routing of these items as required. Any rework resulting from the failure to coordinate will be performed by the Contractor at no additional cost.

All dimensions are from face of stud, u.n.o. All penetrations of fire rated assemblies shall be fire blocked and sealed per UL approved methods.

All concealed fire rated assemblies shall be provided with signage indicating the type of assembly and the fire rating in hours in letters no smaller than 2" high. See 101.2.

**FIRE RATING LEGEND**

<b>THREE HOUR RATED ASSEMBLIES:</b>
3 HOUR RATED FIRE WALL
3FW 3FW
8A A04 2500 3-HR FIREWALL SEPARATING TYPE-2A FIRE AREA - NC56C 1212.11
3 HOUR RATED CONCRETE SLABS (SEE N.C.S.B.C. SECTION 1211.0) SLABS BETWEEN STORAGE LEVEL AND APT. UNITS ABOVE (BUILDING #2 ONLY)
3 HOUR RATED CONCRETE COLUMN (SEE N.C.S.B.C. SECTION 1211.0) COLUMN SUPPORTING 3 HOUR RATED SLABS
<b>TWO HOUR RATED ASSEMBLIES:</b>
2 HOUR RATED FIRE WALL
2FW 2FW
UL U-210 2-HR FIREWALL SEPARATING TYPE-5A FIRE AREA
2 HOUR RATED FIRE BARRIER
2FB 2FB
W105 - ELEVATOR AND STAIR & REAR SHAFTS (6A FILE NO. FC 512)
2 HOUR RATED CEILING
6A FILE NO. FC 512
2 HOUR RATED CONCRETE SLABS (SEE N.C.S.B.C. SECTION 1211.0) SLAB BETWEEN GYMNASIUM AND APT. UNITS ABOVE (BUILDING #4 ONLY)
2 HOUR RATED CONCRETE COLUMN (SEE N.C.S.B.C. TABLE 1211.0) COLUMN SUPPORTING 2 HOUR RATED SLABS
<b>ONE HOUR RATED ASSEMBLIES:</b>
1 HOUR RATED FIRE BARRIER
1FB 1FB
UL U-305 1-HR FIRE BARRIER ADJACENT TO ENCLOSED GARAGE WALLS
1 HOUR RATED FIRE PARTITION
1FP 1FP
d31 d31
UL U-541 1-HR TENANT SEPARATION WALLS
UL U-505 1-HR CORRIDOR WALLS - BUILT TO ACHIEVE STC26 RATING PER REGS. LISTED IN UL INCL. FURRING CHANNELS/CLIPS ON CORRIDOR SIDE OF ASSEMBLY. (2) 2" PANELS TO BE PLACED BETWEEN STUD ENDS AND CLIPS AT SHEAR WALL LOCATIONS. COORDINATE WITH THE STRUCTURAL
1 HOUR RATED STRUCTURAL AND NON-STRUCTURAL ELEMENTS
1HR 1HR
UL U-356 1-HR RATED EXTERIOR BEARING WALL
UL U-306 1-HR RATED UNIT INTERIOR BEARING WALL AND ELEVATOR LOBBIES
1-HR RATED ROOF/CEILING ASSEMBLY, SEE A011 GYPSUM ASSOCIATION FILE NO. RC 2603
UL L-520 1-HR RATED FLOOR/CEILING ASSEMBLY

Order Plans @ [www.LDILine.com](http://www.LDILine.com)

**1 FIREWALL #1 - ENL. PLAN**  
 A3.04 1/4"=1'-0"

**2 FIREWALL #2 - ENLARGED PLAN**  
 A3.04 1/4"=1'-0"

**3 FIREWALL #3 - ENLARGED PLAN**  
 A3.04 1/4"=1'-0"

1/4"=1'-0"

PROJECT 1915  
 DATE 03FEB20  
 DRAWN BY WJP  
 CHECKED BY CMW

ENLARGED FIREWALL  
 PLAN AND DETAILS

**A3.04**