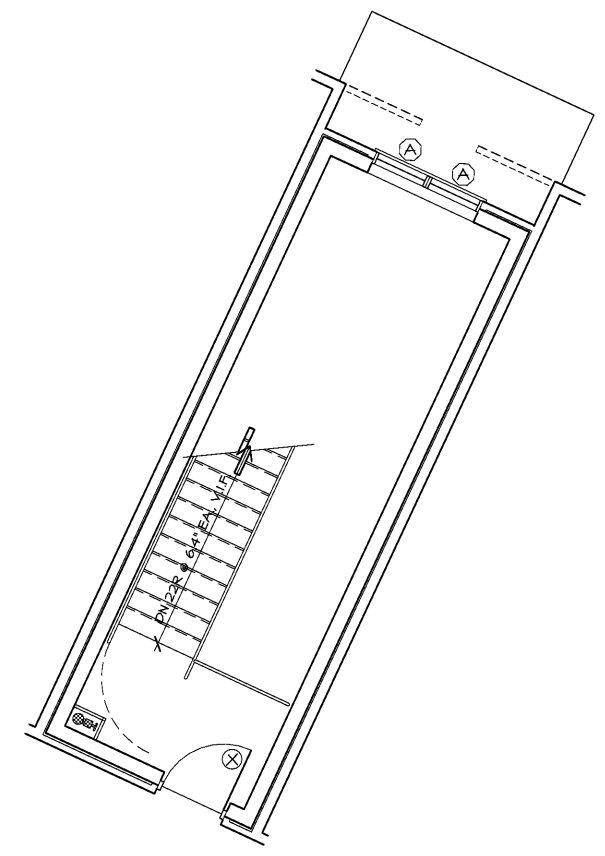
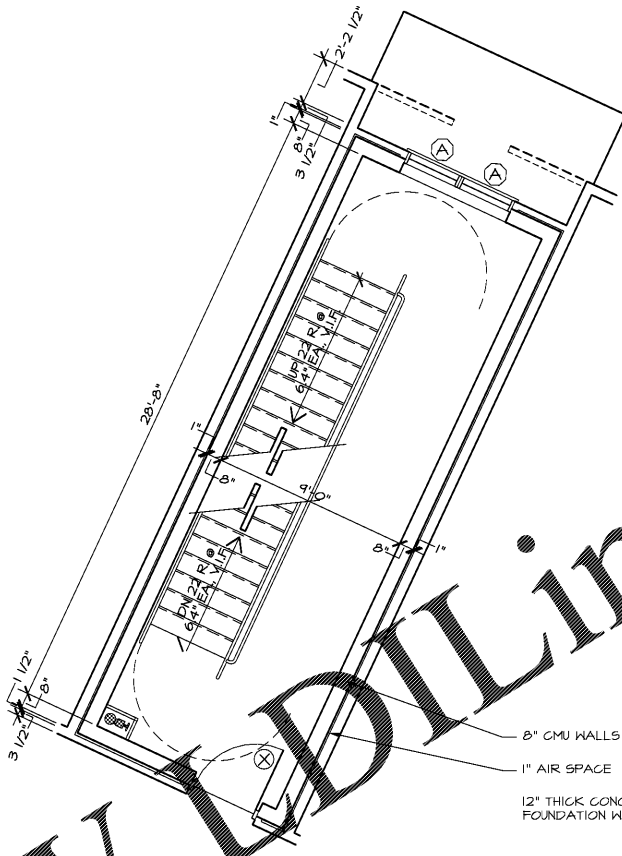


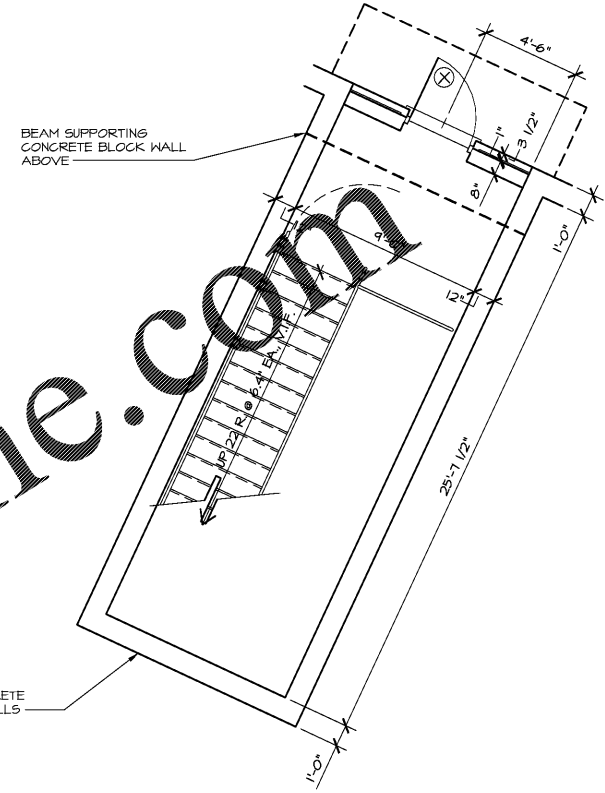
4 ELEVATOR #3 - ENLARGED PLAN
 A3.03 1/4"=1'-0"



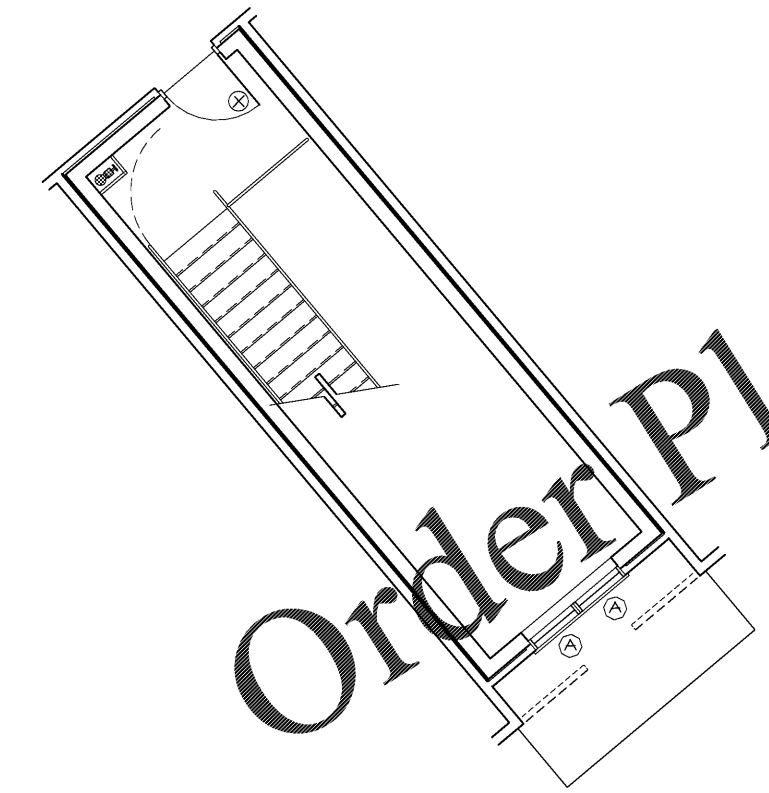
3 STAIR 2 - 347.13' LEVEL PLAN
 A3.03 1/4"=1'-0"



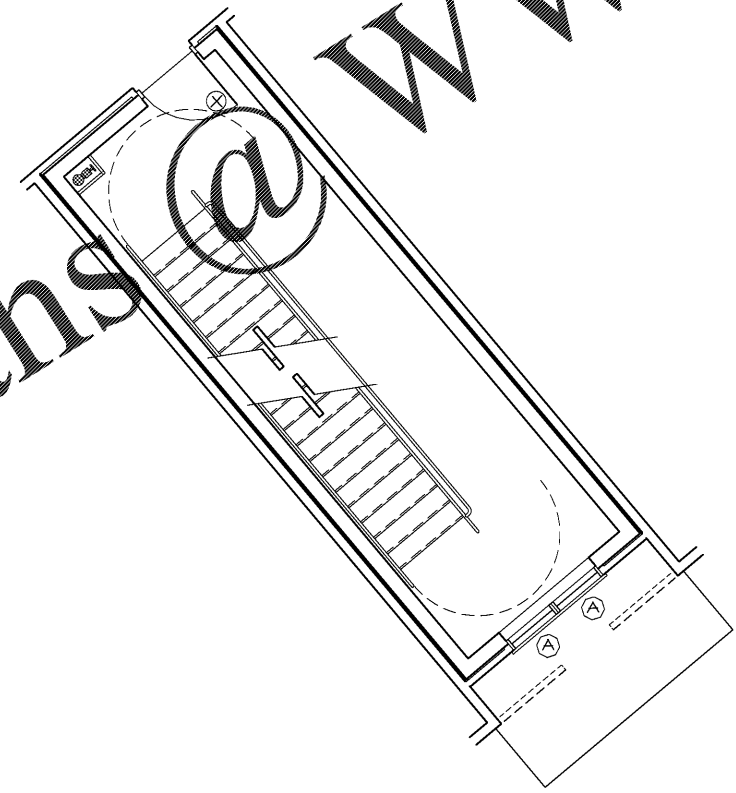
2 STAIR 2 - 312.05' LEVEL PLAN
 A3.03 LEVELS 323.75' & 335.44' SIMILAR 1/4"=1'-0"



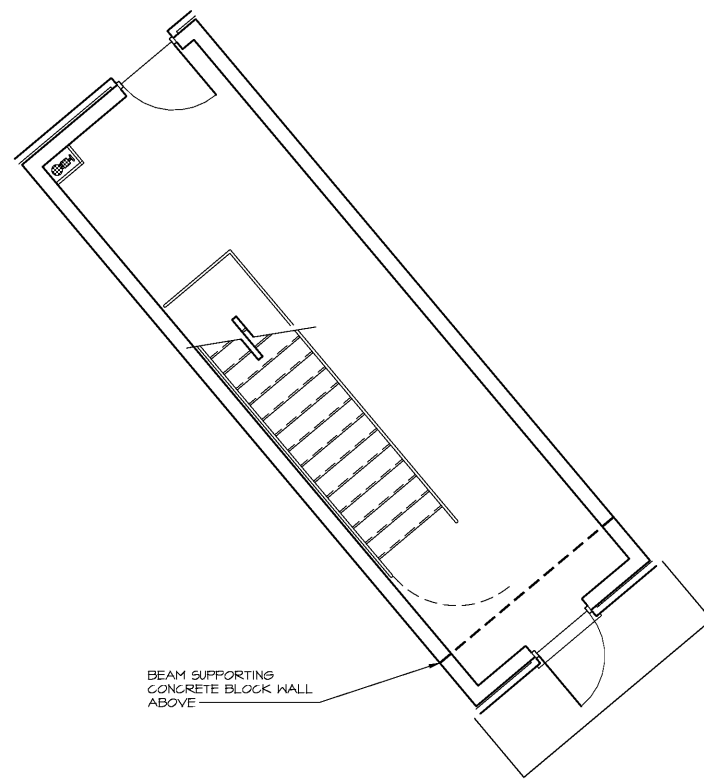
1 STAIR 2 - 300.37' LEVEL PLAN
 A3.03 1/4"=1'-0"



7 STAIR 3 - 348.63' LEVEL PLAN
 A3.03 1/4"=1'-0"



6 STAIR 3 - ???.' LEVEL PLAN
 A3.03 1/4"=1'-0"



5 STAIR 3 - ???.' LEVEL PLAN
 A3.03 1/4"=1'-0"

GENERAL NOTES

The Architectural drawings must be used in conjunction with the Civil, Structural, MEP, Fire Protection drawings and specifications. The Contractor is responsible for all coordination between the drawings. Discrepancies should be brought to the attention of the architect.

The Contractor is advised that the available space for routing all electrical, mechanical, plumbing, fire protection and communications piping, conduit, trays and ductwork may be limited in many locations. The Contractor shall coordinate all of the trades work and make adjustments, with the Architect's approval to the routing of these items as required. Any rework resulting from the failure to coordinate will be performed by the Contractor at no additional cost.

All dimensions are from face of stud, u.n.o. All penetrations of fire rated assemblies shall be fire blocked and sealed per U.L. approved methods.

All concealed fire rated assemblies shall be provided with signage indicating the type of assembly and the fire rating in hours in letters no smaller than 2" high. See Table 2.

FIRE RATING LEGEND

THREE HOUR RATED ASSEMBLIES:	
3 HOUR RATED FIRE WALL	3FW
3 HR AIA 2400 3-HR FIREWALL SEPARATING TYPE 2A FIRE AREA - NIOSH 12111	3FW
3 HOUR RATED CONCRETE SLABS (SEE N.C.S.B.C. SECTION 12110) SLABS BETWEEN STORAGE LEVEL AND APT. UNITS ABOVE (BUILDING #2 ONLY)	3FS
3 HOUR RATED CONCRETE COLLUMS (SEE N.C.S.B.C. SECTION 12110) COLLUMS SUPPORTING 3 HOUR RATED SLABS	3FC
TWO HOUR RATED ASSEMBLIES:	
2 HOUR RATED FIRE WALL	2FW
UL U-210 2-HR FIREWALL SEPARATING TYPE 2A FIRE AREA	2FW
2 HOUR RATED FIRE BARRIER	2FB
WJCS - ELEVATOR AND STAIR #1 REAR SHAFTS	2FB
2 HOUR RATED CEILING	2FC
2 HOUR RATED CONCRETE SLABS (SEE N.C.S.B.C. SECTION 12110) SLABS BETWEEN GLENNHURST AND APT. UNITS ABOVE (BUILDING #4 ONLY)	2FS
2 HOUR RATED CONCRETE COLLUMS (SEE N.C.S.B.C. TABLE 12110) COLLUMS SUPPORTING 2 HOUR RATED SLABS	2FC
ONE HOUR RATED ASSEMBLIES:	
1 HOUR RATED FIRE BARRIER	1FB
UL U-305 1-HR FIRE BARRIER ADJACENT TO ENCLOSED GARAGE WALLS	1FB
1 HOUR RATED FIRE PARTITION	1FP
UL U-341 1-HR TENANT SEPARATION WALLS	1FP
UL U-305 1-HR CORRIDOR WALLS - BUILT TO ACHIEVE STC&E RATING PER REQ. LISTED IN U.L. INCL. FURRING CHANNELS/CLIPS ON CORRIDOR SIDE OF ASSEMBLY. OSB PANELS TO BE PLACED BETWEEN STUD ENDS AND CLIPS AT SHEAR WALL LOCATIONS. COORDINATE WITH THE STRUCTURAL	1FP
1 HOUR RATED STRUCTURAL AND NON-STRUCTURAL ELEMENTS	1HR
UL U-356 1-HR EXTERIOR BEARING WALL	1HR
UL U-305 1-HR RATED UNIT INTERIOR BEARING WALL AND ELEVATOR LOBBIES	1HR
1-HR RATED ROOF/CEILING ASSEMBLY, SEE A01T SYMBLUM ASSOCIATION FILE NO. RC 2603	1HR
UL U-520 1-HR RATED FLOOR/CEILING ASSEMBLY	1HR

Order Plans @

WWW.LDILine.com