

GENERAL NOTES

The Architectural drawings must be used in conjunction with the Civil, Structural, MEP, Fire Protection drawings and specifications. The Contractor is responsible for all coordination between the drawings. Discrepancies should be brought to the attention of the architect.

The Contractor is advised that the available space for routing all electrical, mechanical, plumbing, fire protection and communications piping, conduit, trays and ductwork may be limited in many locations. The Contractor shall coordinate all of the trades work and make adjustments, with the Architect's approval to the routing of these items as required. Any rework resulting from the failure to coordinate will be performed by the contractor at no additional cost.

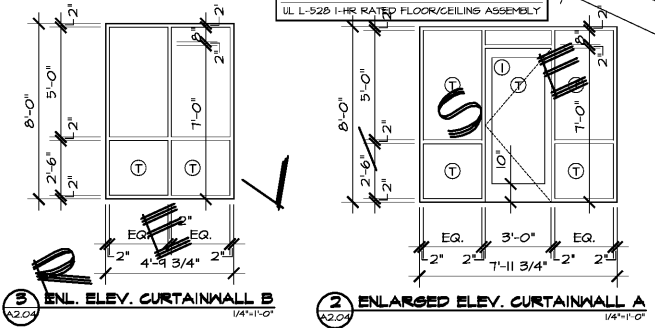
All dimensions are from face of stud, u.n.o.

All penetrations of fire rated assemblies shall be fire blocked and sealed per UL approved methods.

All concealed fire rated assemblies shall be provided with signage indicating the type of assembly and the fire rating in hours in letters no smaller than 2" high. See 701.2.

FIRE RATING LEGEND

THREE HOUR RATED ASSEMBLIES:		
3FW	3FW	3FW
6A ASH 2800 3-HR FIREWALL SEPARATING TYPE-2A FIRE AREA - N.C.S.B.C. 121.2(1)		
3 HOUR RATED CONCRETE SLABS		
SEE N.C.S.B.C. SECTION 121.0(1)		
SLABS BETWEEN STORAGE LEVEL AND APT. UNITS ABOVE (BUILDING #2 ONLY)		
3 HOUR RATED CONCRETE COLUMNS		
SEE N.C.S.B.C. SECTION 121.0(1)		
COLUMNS SUPPORTING 3 HOUR RATED SLABS		
TWO HOUR RATED ASSEMBLIES:		
2FW	2FW	2FW
UL U-210 2-HR FIREWALL SEPARATING TYPE-2A FIRE AREA		
2 HOUR RATED FIRE BARRIER		
2FB	2FB	2FB
U105 - ELEVATOR AND STAIR & MECH. SHAFTS		
2 HOUR RATED CEILING		
6A FILE NO. FC 9125		
2 HOUR RATED CONCRETE SLABS		
SEE N.C.S.B.C. SECTION 121.0(1)		
SLAB BETWEEN CLUBHOUSE AND APT. UNITS ABOVE (BUILDING #4 ONLY)		
2 HOUR RATED CONCRETE COLUMNS		
SEE N.C.S.B.C. TABLE 121.0(1)		
COLUMNS SUPPORTING 2 HOUR RATED SLABS		
ONE HOUR RATED ASSEMBLIES:		
1FB	1FB	1FB
UL U-305 1-HR FIRE BARRIER ADJACENT TO ENCLOSED GARAGE WALLS		
1 HOUR RATED FIRE PARTITION		
1FP	1FP	1FP
UL U-541 1-HR TENANT SEPARATION WALLS		
UL U-305 1-HR GORRIDOR WALLS - BUILT TO ACHIEVE STCS6 RATING PER REGS. LISTED IN UL INCL. FINISH CHANNEL SLIPS ON GORRIDOR SIDE OF ASSEMBLY. OSB PANELS TO BE PLACED BETWEEN STUD ENDS AND GLIPS AT SHEAR WALL LOCATIONS. COORDINATE WITH THE STRUCTURAL		
1 HOUR RATED STRUCTURAL AND NON-STRUCTURAL ELEMENTS		
1HR	1HR	1HR
UL U-356 1-HR RATED EXTERIOR BEARING WALL		
UL U-305 1-HR RATED UNIT INTERIOR BEARING WALL AND ELEVATOR LOBBIES		
1-HR RATED ROOF/CEILING ASSEMBLY, SEE A01.1 679PSM ASSOCIATION FILE NO. RC 2603		
UL L-528 1-HR RATED FLOOR/CEILING ASSEMBLY		



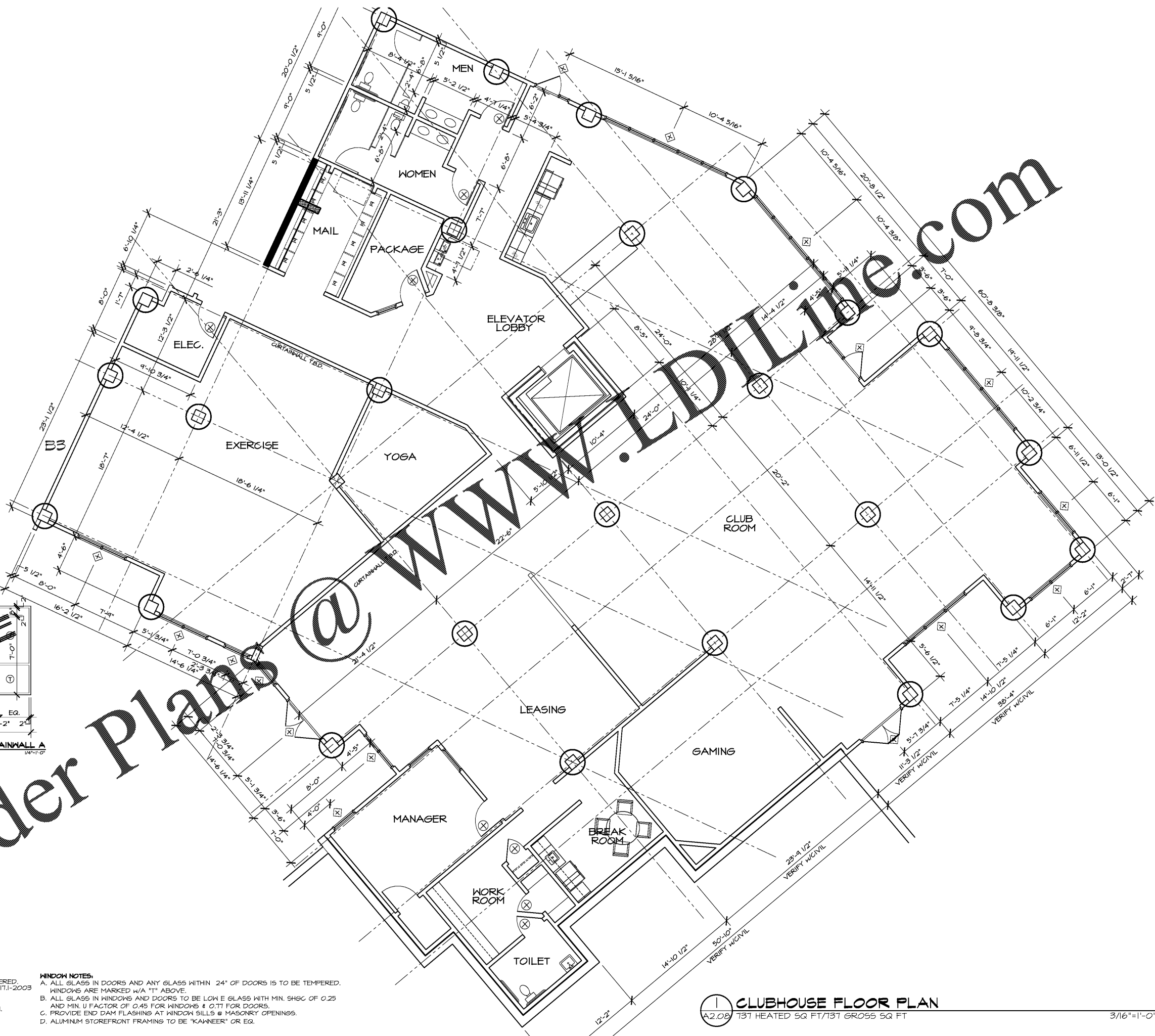
DOOR NOTES:

- ALL GLASS IN DOORS AND ANY GLASS WITHIN 24" OF DOORS IS TO BE TEMPERED.
- ALL DOOR HARDWARE TO MEET THE REQUIREMENTS OF SECTION 404.2.6 OF ANSII 111.1-2003
- ALL ENTRY DOORS TO HAVE HANDICAP THRESHOLD.
- DOORS MARKED WITH A "P" ON THE FLOOR PLAN HAVE PANIC HARDWARE.
- S.C. TO PROVIDE ALL HARDWARE REQUIRED FOR CORRECT DOOR OPERATION.
- ALUMINUM STOREFRONT DOORS TO BE MEDIUM STILE PROFILE.

WINDOW NOTES:

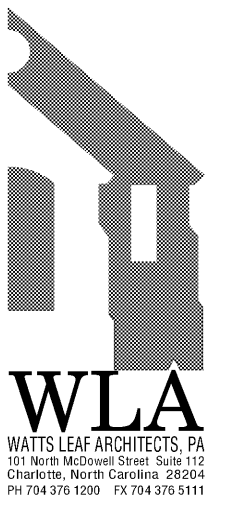
- ALL GLASS IN WINDOWS AND ANY GLASS WITHIN 24" OF DOORS IS TO BE TEMPERED. WINDOWS ARE MARKED W/A "T" ABOVE.
- ALL GLASS IN WINDOWS AND DOORS TO BE LOW E GLASS WITH MIN. SHGC OF 0.25 AND MIN. U FACTOR OF 0.45 FOR WINDOWS & 0.71 FOR DOORS.
- PROVIDE END DAM FLASHINGS AT WINDOW SILLS & MASONRY OPENINGS.
- ALUMINUM STOREFRONT FRAMING TO BE "KAWNEER" OR EQ.

Order Plans @ WWW.LDILINE.COM



1 CLUBHOUSE FLOOR PLAN
A2.08 737 HEATED SQ. FT./737 GROSS SQ. FT.

3/16"=1'-0"



CRABTREE NORTH APTS.
2251 Charles Drive
Raleigh, North Carolina
EYC COMPANIES

PROJECT	1915
DATE	08JAN20
DRAWN BY	WJP
CHECKED BY	CMW
ENLARGED CLUBHOUSE PLAN	
A2.08	