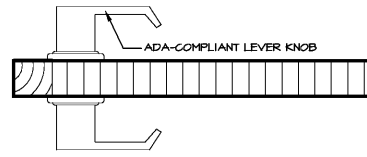
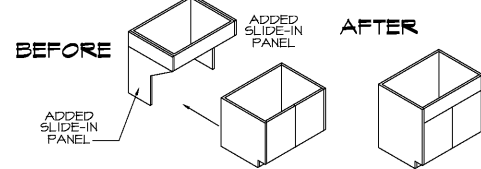


16 GRADE LEVEL APARTMENT ENTRY DETAIL
 AO.18 BYWAY DOOR SHOWN, SWINGING PATIO DOORS SIM. 3" = 1'-0"



16a DETAIL
 AO.18

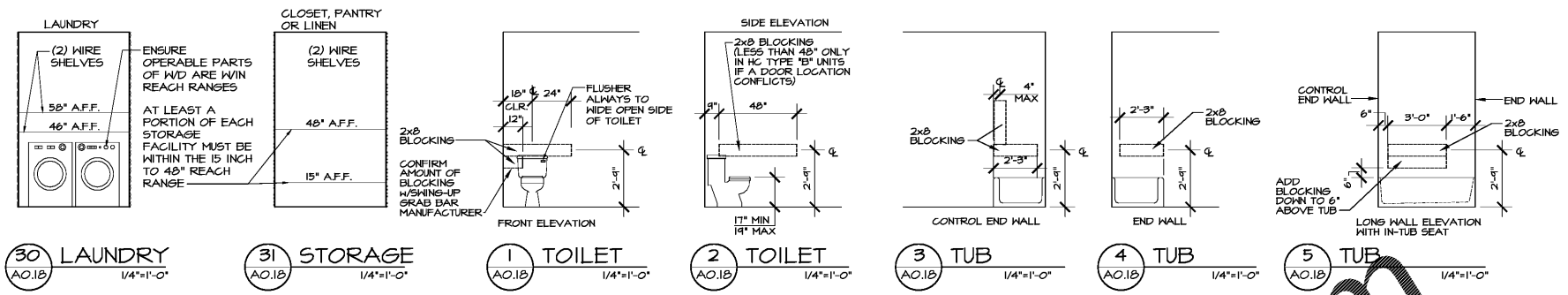


29 H.C. CONVERSION CABINETS
 AO.18 ** DO NOT INSTALL CONVERSION CABINETS UNTIL AFTER FINAL INSPECTION. **
 THE DIAGRAM ABOVE SHOWS THE PARTS AND PROCEDURE USED IN ORDER TO CONVERT A STANDARD "HANDICAP ACCESSIBLE" UNIT FOR STANDARD USE. IN BOTH THE KITCHEN AND BATH, THE OPEN KNEE SPACE AREAS BELOW THE SINKS WILL HAVE A SLIDE-IN REMOVABLE BOX AND SLIDE-IN REMOVABLE SIDE PANELS.

NOTE: FINISHED FLOOR MUST EXTEND UNDER CABINETS

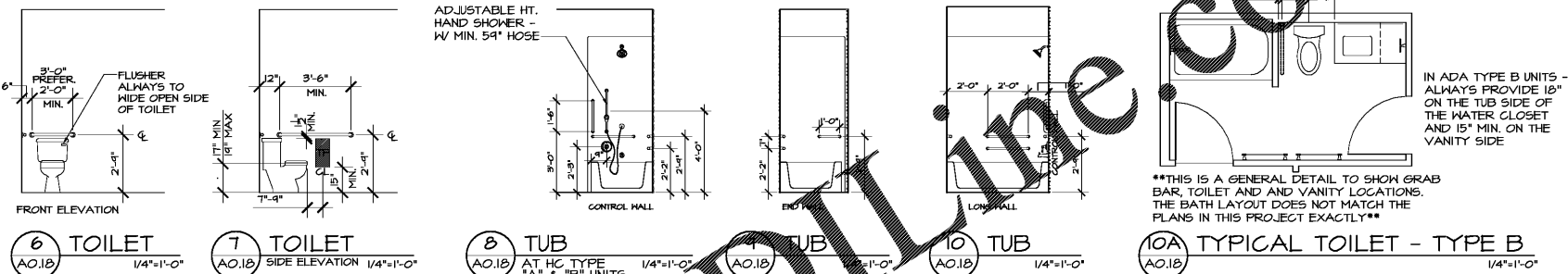
TYPE A AND TYPE B GENERAL NOTES:

- ENSURE OPERABLE WINDOWS ARE PROVIDED WITH ACCESSIBLE OPERABLE PARTS. OPERABLE PARTS MUST BE WITHIN AN ACCESSIBLE REACH RANGE (48"), BE OPERABLE WITH ONE HAND NOT REQUIRING TIGHT GRASPING, FINCHING OR TWISTING OF THE WRIST, AND ACTIVATED WITH NOT MORE THAN 5 POUNDS OF FORCE. SEE NOTES ON SHEET A2.0B (BOTTOM LEFT CORNER) OF CONSTRUCTION DOCUMENTS. TYPICAL IN ALL TYPE A UNITS.
- CLEARANCE BETWEEN ALL OPPOSING BASE CABINETS, COUNTER TOPS, APPLIANCES OR WALLS WITHIN KITCHEN WORK AREAS SHALL BE 40" MINIMUM. TYPICAL IN ALL TYPE A AND TYPE B UNITS.
- ENSURE THAT ALL OPERABLE PARTS OF THE WASHING MACHINE OR DRYER ARE WITHIN ACCESSIBLE REACH RANGES INCLUDING DOORS, LINT SCREEN, DETERGENT AND BLEACH COMPARTMENTS. TYPICAL IN ALL TYPE A UNITS.
- OWNER TO PROVIDE A COUNTER TOP MODEL MICROWAVE OVER AT ALL H.C. TYPE A UNITS.
- ALL ENTRY DOORS IN TYPE A AND TYPE B UNITS MUST HAVE 18" BOUND THE LATCH (FULL SIDE) AND 60" PERPENDICULAR TO THE DOOR ON THE FULL SIDE.
- ALL USER PASSAGE DOORS WITHIN TYPE A UNITS MUST HAVE 18" BOUND THE LATCH (FULL SIDE) AND 60" PERPENDICULAR TO THE DOOR ON THE FULL SIDE EXCEPT FOR THE DOORS IN NON-COMPLIANT BATHROOMS, PER I0025 EXCEPTION #2 (G1 UNIT).
- ENSURE THAT ACCESSIBLE WALL SWITCHES NEAR THE RANGE ARE PROVIDED FOR INDEPENDENT RANGE HOOD/LIGHT OPERATOR IN TYPE B UNITS.
- RANGES SHALL HAVE FRONT CONTROLS FOR COOKTOP AND OVEN. OVEN DOOR SHALL BE BOTTOM HINGED AND ABLE TO OPEN FULL 90 DEGREES IN TYPE A UNITS.
- REFRIGERATORS SHALL BE INSTALLED SO THE DOORS CAN OPEN 90 DEGREES. ENSURE THAT LEFT HALF OF THE CONTROLS OF THE REF/FREEZER ARE WITHIN THE REACH RANGE WITH 15" MAX. AFF IN THE FREEZER IN TYPE A UNITS.
- DISHWASHERS SHALL HAVE FRONT PUSH BUTTON CONTROLS. DOOR LOCKING SHALL BE BY PUSH BUTTON, LATCH OR LEVER IN TYPE A UNITS.
- ENSURE THAT REMOVABLE CABINETS CAN BE REMOVED WITHOUT REPLACEMENT OF THE WORK SURFACE THAT FLOOR FINISH EXTENDS UNDER THE CABINETS, AND THAT WALLS BEHIND AND THE SURROUNDING THE CABINETS ARE FINISHED IN TYPE A UNITS. SEE DETAIL A2.0A.
- KITCHENS IN TYPE A UNITS SHALL: HAVE A BOWL DEPTH NOT TO EXCEED 6 1/2" HAVE LEVER TYPE FAUCETS. SINK TO HAVE REAR OFFSET DRAIN. MOUNT DISPOSAL TO ALLOW CLEAR KNEE SPACE. HEIGHT TO BE 34" TO COUNTER OR SINK RIM, WHICHEVER IS HIGHER.
- WATER HEATER SHALL BE SET SO WATER TEMP. CANNOT EXCEED 120 DEGREES.
- INSTALL 2x8 BLOCKING IN WALLS FOR FUTURE GRAB BAR LOCATIONS (ADAPTABLE FEATURE). ALL GRAB BARS ARE TO BE 1 1/2" DIAMETER STAINLESS STEEL. GRAB BARS DO NOT NEED TO BE INSTALLED BUT THE BLOCKING MUST BE IN PLACE IN TYPE B AND TYPE A UNITS.
- IN HC TYPE A UNITS ONLY, CLOSET SHELVES/RODS SHALL BE INSTALLED SO THAT THE HIGHEST SHELF IS 48" MAX. AFF. AND THE LOWEST SHELF IS 15" MIN. IF ONLY ONE SHELF IS PROVIDED IN ANY CLOSET, THE HEIGHT SHALL NOT EXCEED 48" MAX.
- RF - REMOVABLE FRONT/ RK - REMOVABLE KICK/ WS - WORK SURFACE
- BATHROOM SINKS AT FULLY ACCESSIBLE BATHROOM AND TYPE B OPTION BATHROOM MUST BE 34" MAX TO THE COUNTER OR SINK RIM WHICHEVER IS HIGHER. ALL SUPPLY AND DRAIN LINES UNDER LAVATORIES TO BE INSULATED AND PROTECTED AGAINST CONTACT.



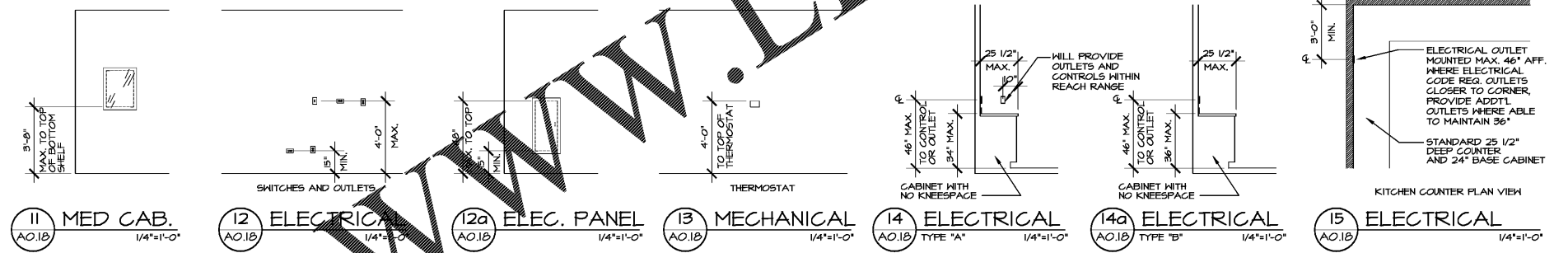
LAUNDRY & STORAGE - TYPE A

GRADE LEVEL UNIT BLOCKING REQUIREMENTS - TYPE A & B HANDICAPPED ACCESSIBLE
 ALL BATHROOMS AT ALL MULTIPLE BATHROOM UNITS REQUIRE REINFORCING AT BATHTUB & TOILETS

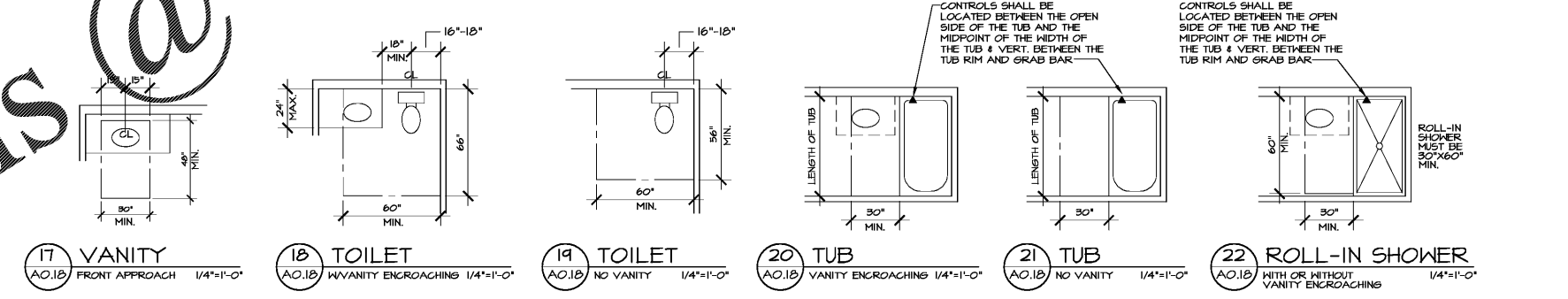


TYPE "A" GRAB BAR LOCATIONS

TYPE "B" SWING UP GRAB BARS

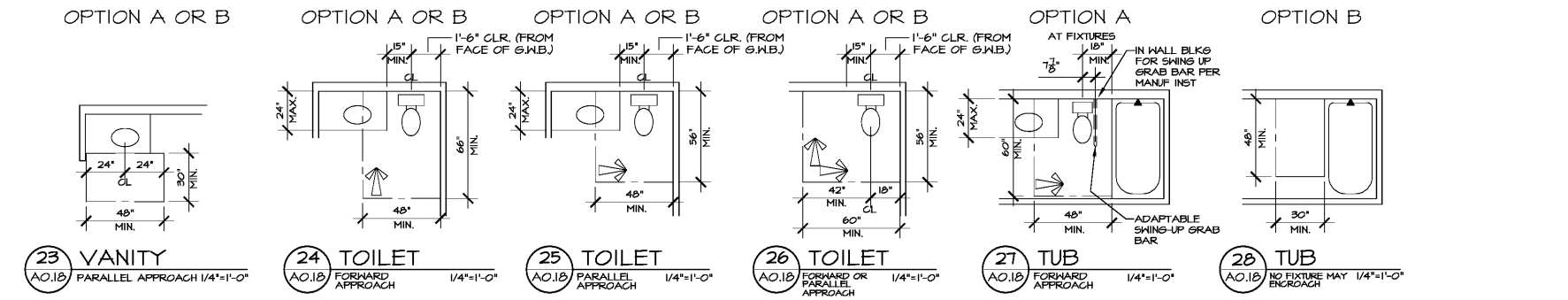


MOUNTING HEIGHTS

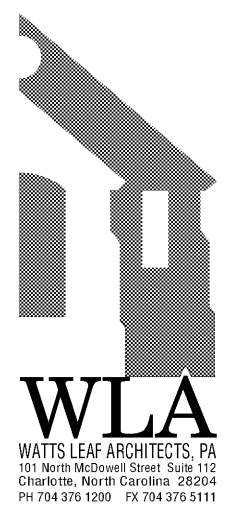


CLEAR FLOOR SPACE REQUIREMENTS - TYPE A BATHROOMS

DIMENSIONS SHOWN ARE TO FINISHED GYP. BOARD, NOT STUD TO STUD



CLEAR FLOOR SPACE REQUIREMENTS - TYPE B BATHROOMS



WLA
 WATTS LEAF ARCHITECTS, PA
 101 North McDowell Street Suite 112
 Charlotte, North Carolina 28204
 PH 704 376 1200 FX 704 376 5111

CRABTREE NORTH APTS.
 2251 Charles Drive
 Raleigh, North Carolina
 EYC COMPANIES

PROJECT	1915
DATE	03FEB20
DRAWN BY	WJP
CHECKED BY	CMW

FAIR HOUSING AND ANSI GUIDELINES
A0.18