

McADAMS

The John R. McAdams Company, Inc.
2905 Meridian Parkway
Durham, NC 27713

phone 919.361.5000
fax 919.361.2269
license number: C-0293, C-187

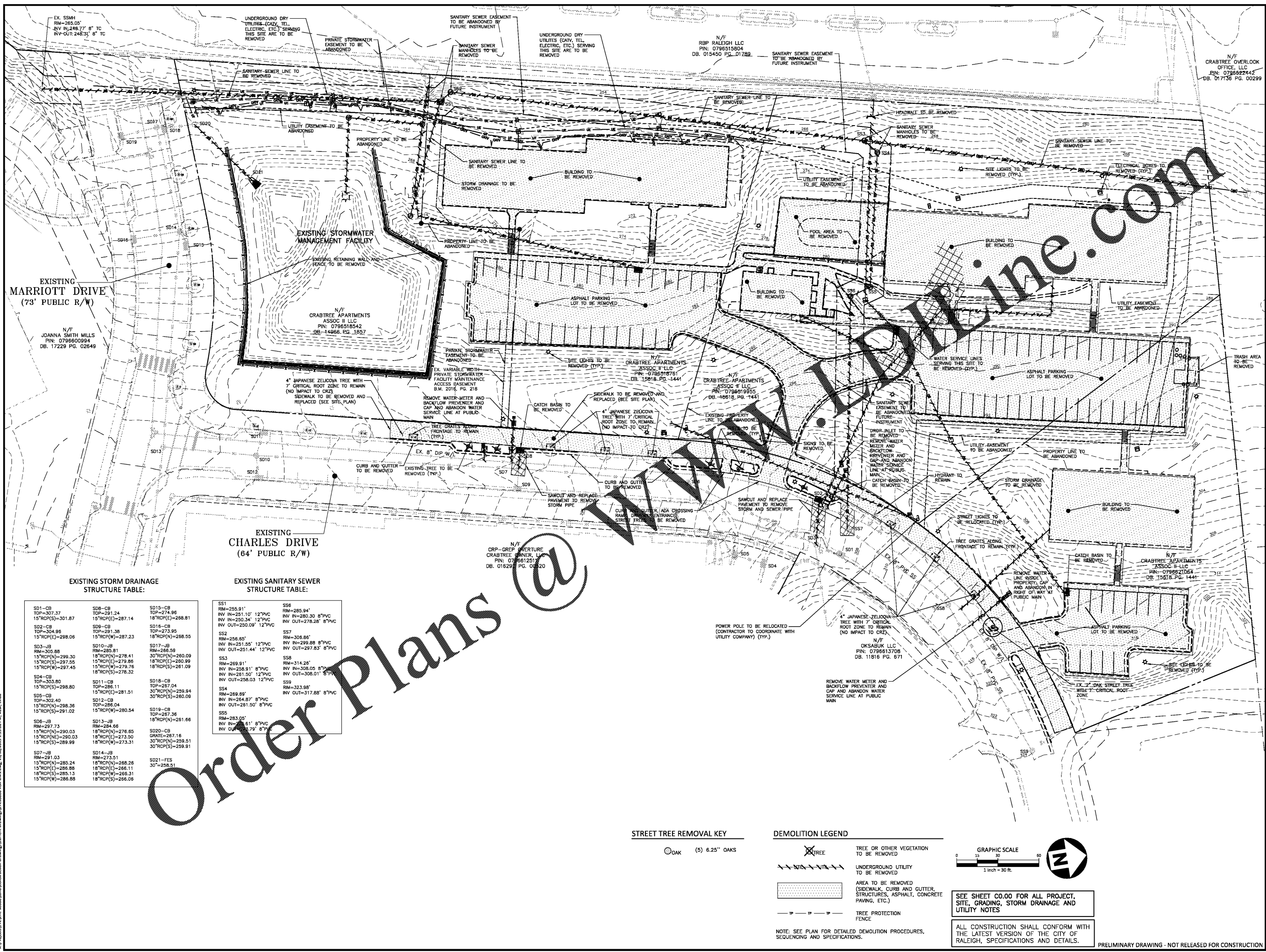
www.mcadamsco.com

CLIENT

EYC COMPANIES/Front Street Design
AND CONSULTING
36 CENTER DRIVE
FOLLY BEACH, SOUTH CAROLINA, 29439
PHONE: 843.588.5021 404

CRABTREE NORTH APARTMENTS ADMINISTRATIVE SITE REVIEW

RALEIGH, NORTH CAROLINA, 27716



EXISTING STORM DRAINAGE
STRUCTURE TABLE:

| | | |
|--|---|--|
| SD1-CB TOP=307.37 15"RCPS(S)=301.87 | SD8-CB TOP=291.24 15"RCPS(E)=287.14 | SD15-CB TOP=274.98 18"RCPS(E)=268.81 |
| SD2-CB TOP=304.98 15"RCPS(E)=298.06 | SD9-CB TOP=291.38 15"RCPS(W)=287.23 | SD16-CB TOP=273.95 18"RCPS(N)=268.55 |
| SD3-JB RIM=305.88 15"RCPS(N)=299.30 15"RCPS(S)=297.55 15"RCPS(W)=297.45 | SD10-JB RIM=285.91 18"RCPS(N)=278.41 15"RCPS(E)=279.86 15"RCPS(W)=279.76 18"RCPS(S)=278.32 | SD17-JB RIM=286.58 30"RCPS(N)=260.09 18"RCPS(E)=280.99 18"RCPS(S)=281.09 |
| SD4-CB TOP=303.80 15"RCPS(S)=298.80 | SD11-CB TOP=286.11 15"RCPS(E)=281.51 | SD18-CB TOP=267.04 30"RCPS(N)=259.94 30"RCPS(S)=260.09 |
| SD5-CB TOP=302.40 15"RCPS(N)=298.36 15"RCPS(S)=291.02 | SD12-CB TOP=286.04 15"RCPS(W)=280.54 | SD19-CB TOP=267.38 15"RCPS(N)=281.66 |
| SD6-JB RIM=297.73 15"RCPS(N)=290.03 15"RCPS(E)=280.03 15"RCPS(S)=289.99 | SD13-JB RIM=284.66 18"RCPS(N)=276.85 18"RCPS(E)=273.50 18"RCPS(W)=273.31 | SD20-CB GRATE=287.16 30"RCPS(N)=259.51 30"RCPS(S)=259.91 |
| SD7-JB RIM=291.03 15"RCPS(N)=285.24 15"RCPS(E)=286.88 18"RCPS(S)=285.13 15"RCPS(W)=286.88 | SD14-JB RIM=273.51 18"RCPS(N)=268.26 18"RCPS(E)=266.11 18"RCPS(W)=266.31 18"RCPS(S)=266.06 | SD21-FES 30"=258.51 |

EXISTING SANITARY SEWER
STRUCTURE TABLE:

| | |
|---|---|
| SS1 RIM=255.91' INV IN=251.10' 12" PVC INV IN=250.34' 12" PVC INV OUT=250.09' 12" PVC | SS6 RIM=285.94' INV IN=280.30' 8" PVC INV OUT=278.28' 8" PVC |
| SS2 RIM=256.65' INV IN=251.55' 12" PVC INV OUT=251.44' 12" PVC | SS7 RIM=308.86' INV IN=299.88' 8" PVC INV OUT=297.83' 8" PVC |
| SS3 RIM=269.91' INV IN=258.91' 8" PVC INV IN=261.50' 12" PVC INV OUT=258.03' 12" PVC | SS8 RIM=314.26' INV IN=308.05' 8" PVC INV OUT=306.01' 8" PVC |
| SS4 RIM=269.69' INV IN=264.87' 8" PVC INV OUT=261.50' 8" PVC | SS9 RIM=323.98' INV IN=317.88' 8" PVC |
| SS5 RIM=283.05' INV IN=277.91' 8" PVC INV OUT=277.79' 8" PVC | |

Order Plans @

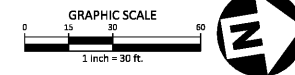
STREET TREE REMOVAL KEY

○ OAK (5) 6.25" OAKS

DEMOLITION LEGEND

- TREE OR OTHER VEGETATION TO BE REMOVED
- UNDERGROUND UTILITY TO BE REMOVED
- AREA TO BE REMOVED (SIDEWALK, CURB AND GUTTER, STRUCTURES, ASPHALT, CONCRETE PAVING, ETC.)
- TREE PROTECTION FENCE

NOTE: SEE PLAN FOR DETAILED DEMOLITION PROCEDURES, SEQUENCING AND SPECIFICATIONS.



SEE SHEET C0.00 FOR ALL PROJECT, SITE, GRADING, STORM DRAINAGE AND UTILITY NOTES

ALL CONSTRUCTION SHALL CONFORM WITH THE LATEST VERSION OF THE CITY OF RALEIGH, SPECIFICATIONS AND DETAILS.

PRELIMINARY DRAWING - NOT RELEASED FOR CONSTRUCTION

REVISIONS

| NO. | DATE | REVISION DESCRIPTION |
|-----|----------|--------------------------------------|
| 1 | 11.19.19 | REVISED PER CITY OF RALEIGH COMMENTS |

PLAN INFORMATION

PROJECT NO. EYC-18000
FILENAME EYC18000-DM1
CHECKED BY LJV
DRAWN BY CJJ
SCALE 1"=30'
DATE 07.08.2019
SHEET

DEMOLITION PLAN

C1.01

X:\Project\18000\18000-DM1\Construction Drawings\18000-DM1.dwg, 11/19/2019 1:39:00 PM, Vasil, Linda