

McADAMS

The John R. McAdams Company, Inc.
2905 Meridian Parkway
Durham, NC 27713

phone 919. 361. 5000
fax 919. 361. 2269
license number: C-0293, C-187

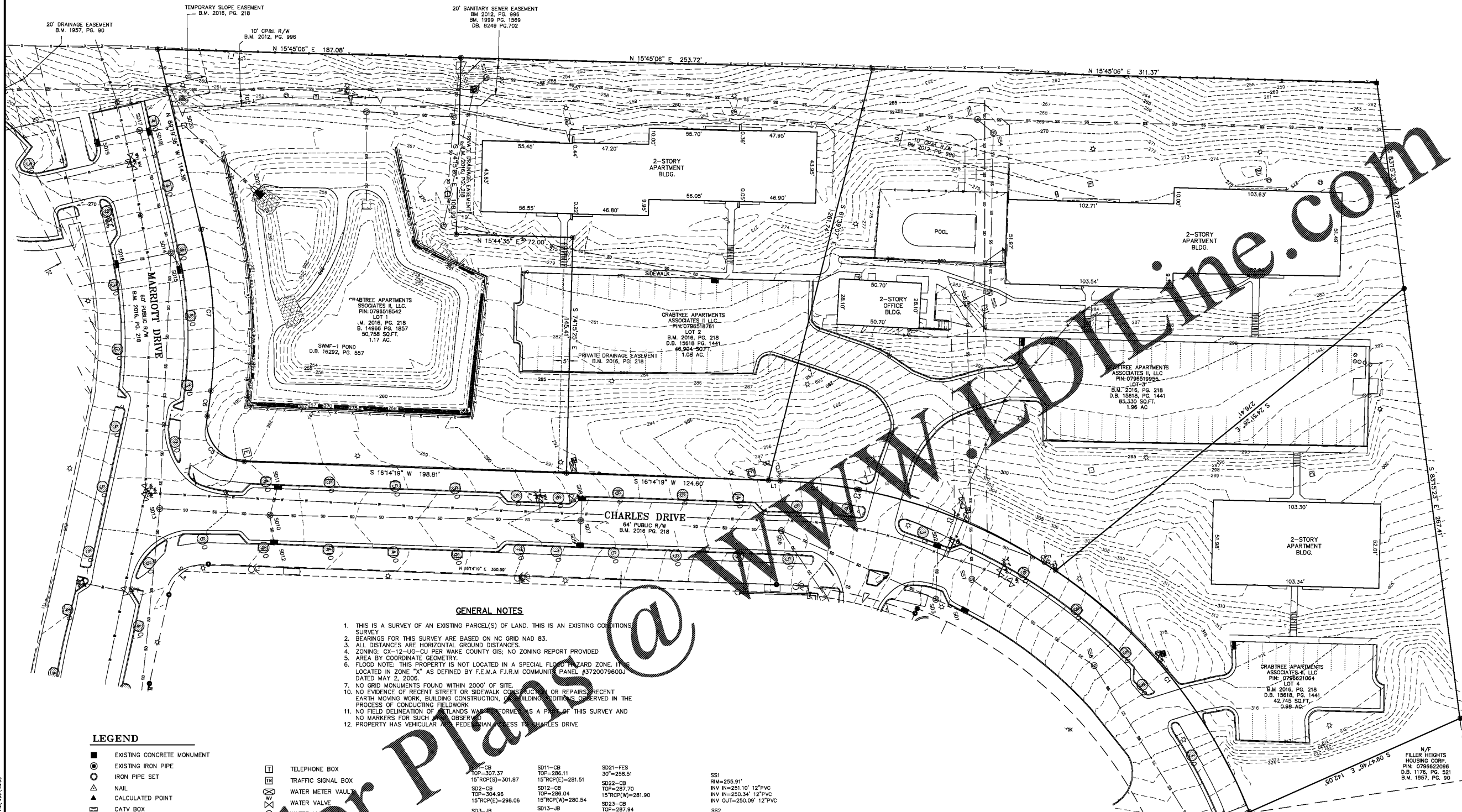
www.mcadamsco.com

CLIENT

EYC COMPANIES/Front Street Design
AND CONSULTING
36 CENTER DRIVE
FOLLY BEACH, SOUTH CAROLINA, 29439
PHONE: 843. 588. 5021 x404

CRABTREE NORTH APARTMENTS ADMINISTRATIVE SITE REVIEW

RALEIGH, NORTH CAROLINA, 27716



GENERAL NOTES

- THIS IS A SURVEY OF AN EXISTING PARCEL(S) OF LAND. THIS IS AN EXISTING CONDITIONS SURVEY.
- BEARINGS FOR THIS SURVEY ARE BASED ON NC GRID NAD 83.
- ALL DISTANCES ARE HORIZONTAL GROUND DISTANCES.
- ZONING: CX-12-UG-CU PER WAKE COUNTY GIS; NO ZONING REPORT PROVIDED.
- AREA BY COORDINATE GEOMETRY.
- FLOOD NOTE: THIS PROPERTY IS NOT LOCATED IN A SPECIAL FLOOD HAZARD ZONE. IT IS LOCATED IN ZONE "X" AS DEFINED BY F.E.M.A. F.I.R.M. COMMUNITY PANEL #3720079600J DATED MAY 2, 2006.
- NO GRID MONUMENTS FOUND WITHIN 2000' OF SITE.
- NO EVIDENCE OF RECENT STREET OR SIDEWALK CONSTRUCTION OR REPAIRS, RECENT EARTH MOVING WORK, BUILDING CONSTRUCTION, OR BUILDING CONDITIONS OBSERVED IN THE PROCESS OF CONDUCTING FIELDWORK.
- NO FIELD DELINEATION OF BOUNDARIES WAS PERFORMED AS PART OF THIS SURVEY AND NO MARKERS FOR SUCH OBSERVED.
- PROPERTY HAS VEHICULAR ACCESS TO CHARLES DRIVE.

LEGEND

- EXISTING CONCRETE MONUMENT
- EXISTING IRON PIPE
- IRON PIPE SET
- NAIL
- CALCULATED POINT
- CATV BOX
- UTILITY POLE
- LIGHT POLE
- GUY WIRE
- ELECTRIC TRANSFORMER
- ELECTRIC METER
- ELECTRIC MANHOLE
- ELECTRIC BOX
- FIBER OPTIC VAULT
- FIBER OPTIC MARKER
- GAS VALVE
- GAS TEST STATION
- GAS MANHOLE
- GAS METER
- SANITARY SEWER MANHOLE
- CLEAN OUT
- FLARED END SECTION
- JUNCTION BOX
- DROP INLET
- CATCH BASIN
- TELEPHONE MANHOLE
- TELEPHONE BOX
- TRAFFIC SIGNAL BOX
- WATER METER VAULT
- WATER VALVE
- WATER MANHOLE
- BACKFLOW PREVENTER
- FIRE METER
- IRRIGATION CONTROL VALVE
- FIRE HYDRANT
- FIRE TAP CONNECTION
- BOLLARD
- HVAC UNIT
- SIGN
- SS - SANITARY SEWER PIPE
- W - WATER LINE
- FO - FIBER OPTIC
- UE - UNDERGROUND ELECTRIC
- CATV - CABLE TELEVISION
- OU - OVERHEAD UTILITY
- G - GAS LINE
- X - FENCE LINE
- SD - STORM DRAIN PIPE
- T - UNDERGROUND TELEPHONE
- TREELINE/HEDGE ROW

SD1-CB TOP=307.37 15"RCP(S)=301.87	SD11-CB TOP=286.11 15"RCP(E)=281.51	SD21-FES 30"=258.51	SS1 RM=255.91' INV IN=251.10' 12"PVC INV IN=250.34' 12"PVC INV OUT=250.09' 12"PVC
SD2-CB TOP=304.96 15"RCP(E)=298.08	SD12-CB TOP=287.70 15"RCP(W)=281.90	SD22-CB TOP=287.70 15"RCP(W)=281.90	SS2 RM=256.65' INV IN=251.55' 12"PVC INV OUT=251.44' 12"PVC
SD3-CB RM=308.88 15"RCP(N)=299.30 15"RCP(S)=297.55 15"RCP(W)=297.45	SD13-CB TOP=287.94 15"RCP(W)=282.44	SD23-CB TOP=287.94 15"RCP(W)=282.44	SS3 RM=289.91' INV IN=284.91' 8"PVC INV IN=261.50' 12"PVC INV OUT=258.03' 12"PVC
SD4-CB TOP=303.80 15"RCP(S)=298.80	SD14-CB RM=273.51 15"RCP(N)=268.28 15"RCP(E)=266.11 15"RCP(W)=266.31 TOP=302.40 15"RCP(N)=298.36 15"RCP(S)=291.02	SD24-CB TOP=286.54 15"RCP(E)=281.14 15"RCP(S)=281.14	SS4 RM=269.89' INV IN=254.87' 8"PVC INV OUT=261.50' 8"PVC
SD5-CB TOP=302.40 15"RCP(N)=298.36 15"RCP(S)=291.02	SD15-CB TOP=274.95 15"RCP(E)=268.81	SD25-CB TOP=285.13 15"RCP(N)=277.03 15"RCP(S)=276.71	SS5 RM=283.05' INV IN=276.61' 8"PVC INV OUT=273.79' 8"PVC
SD6-CB RM=297.73 15"RCP(N)=290.03 15"RCP(E)=290.03 15"RCP(S)=289.99	SD16-CB TOP=273.95 15"RCP(N)=276.36	SD26-CB TOP=284.36 15"RCP(N)=279.76	SS6 RM=285.94' INV IN=280.30' 8"PVC INV OUT=287.83' 8"PVC
SD7-CB RM=291.03 15"RCP(N)=285.24 15"RCP(E)=286.88 15"RCP(S)=285.13 15"RCP(W)=286.88	SD17-CB RM=288.59 30"RCP(N)=280.09 15"RCP(E)=280.99 15"RCP(S)=281.09	SD27-CB TOP=284.05 15"RCP(N)=279.00 15"RCP(S)=278.95 15"RCP(W)=278.85	SS7 RM=306.86' INV IN=299.88' 8"PVC INV OUT=287.83' 8"PVC
SD8-CB TOP=291.24 15"RCP(E)=287.14 SD9-CB TOP=291.38 15"RCP(W)=287.23	SD18-CB TOP=267.04 30"RCP(N)=259.94 30"RCP(S)=260.09	SD28-CB TOP=284.05 15"RCP(N)=279.00 15"RCP(S)=278.95 15"RCP(W)=278.85	SS8 RM=314.26' INV IN=308.05' 8"PVC INV OUT=308.01' 8"PVC
SD10-CB RM=285.81 15"RCP(N)=278.41 15"RCP(E)=279.86 15"RCP(S)=279.16 15"RCP(W)=278.32	SD19-CB TOP=267.38 15"RCP(N)=261.66	SD29-CB TOP=284.05 15"RCP(N)=279.00 15"RCP(S)=278.95 15"RCP(W)=278.85	SS9 RM=333.98' INV OUT=317.88' 8"PVC

CURVE	RADIUS	ARC LENGTH	CHORD BEARING	CHORD LENGTH
C1	323.90'	193.72'	S 65°24'33" W	190.85'
C2	323.90'	131.82'	S 36°36'56" W	130.91'
C3	323.90'	1.61'	S 24°48'51" W	1.61'
C4	323.90'	47.67'	S 20°27'19" W	47.63'
C5	24.00'	40.89'	S 65°07'38" W	36.12'
C6	286.50'	15.77'	N 67°43'39" W	15.76'
C7	286.50'	100.12'	N 79°18'55" W	99.61'

LINE	BEARING	DISTANCE
L1	S 161°14'19" W	7.25'



ALL CONSTRUCTION SHALL CONFORM WITH THE LATEST VERSION OF THE CITY OF RALEIGH, SPECIFICATIONS AND DETAILS.

PRELIMINARY DRAWING - NOT RELEASED FOR CONSTRUCTION



REVISIONS

NO.	DATE	REVISION DESCRIPTION
1	11.19.19	REVISED PER CITY OF RALEIGH COMMENTS

PLAN INFORMATION

PROJECT NO. EYC-18000
 FILENAME EYC18000-XC1
 CHECKED BY RTF
 DRAWN BY CJJ
 SCALE 1"=30'
 DATE 07.08.2019
 SHEET

EXISTING CONDITIONS

C1.00

Order Plans @

www.Dline.com

X:\Projects\18000\Construction Drawings\18000-ASH-XC1.dwg, 1/17/2019 1:36:48 PM, Wall, Linda