

GENERAL NOTES

- All Notes, General Notes, Keynotes & Legend Entries Are Sheet Specific And Don't Apply To Other Sheets Unless Noted Otherwise.
- Not All Symbols In Legend Are Used. " " In Legend Indicates Default Device Type. Legend 'Notes' Column List Default Mounting Height To Center, Installation Type Or Location Of Installation Information.
- Schedule Footnotes & General Notes Are Relevant Only To The Schedule In Which They Are Under Unless Noted Otherwise.
- Branch Circuits Shall Be (2)#10, #10 GR In 1/2" Conduit, Unless Noted Otherwise.
- Circuits Are Connect To Panel 'H1', Unless Noted Otherwise.
- A Lower Case Letter Next To A Light Fixture Indicates The Switching Level Light Fixture. Switching Devices With A Lower Case Letter Indicates Which Level They Control. Switching Levels May Have Multiple Switching Devices. Switching Levels Are Relevant To Their Room, Unless Noted Otherwise.
- A Circuit Number Followed By A Lower Case 'u' Indicates An Unswitched Conductor Of The Circuit Indicated.
- A Light Fixture Labeled With 'NLI' Indicates A Night Light And Shall Be Powered From An Unswitched Conductor For 24 Hour Operation.
- Adjacent Switches May Be Combined Into Multi-Gang Boxes.

LIGHTING NOTES

- See Architectural Reflected Ceiling Plans For Exact Light Fixture Placement.
- Wallpack Lighting Circuiting Shown Outside Of Building Footprint. Route Wallpack Circuiting Within Building Structure.
- All Light Fixtures Must Be Free From All Dust And Spashes Wiped Clean After Completion Of The Project.
- Verify With Architect And Floor & Decor Project Manager Of Latest Fixture Plan For Light Fixture Layout Prior To Installing Any Lighting.
- Verify With Vendor And Floor & Decor Project Manager Of Latest Reloc Layout Prior To Installing Any Reloc Components.

LIGHTING PACKAGE NOTES

- All Light Fixtures, Aircraft Cable & RELOC Modular Wiring System Components Are Part Of A Floor & Decor Specified Package With Lighting Vendor, See 'Cover Sheet', For More Information.
- Contractor Shall Be Responsible For Receiving, Inventory, Storage, And Installation Of All Owner Furnished Lighting & Reloc Materials.
- Contractor Shall Coordinate Ship Dates And Other Requirements With Vendor.
- G.C. To Check In All Lighting Equipment Within 48 Hours Of Receiving And Report Any Damage Or Discrepancies To Vendor.
- Unused Vendor Provided Materials Must Be Palletized, Shrink Wrapped And Returned To Vendor In Good Condition For Future Tenant Use.
- RELOC Installation Drawings To Be Provided By Vendor Prior To Materials Arriving On Site.
- RELOC Components Located At Or Near The Ceiling Must Be Covered During Painting Process. Painting Sensitive Electrical Components Inside The RELOC System May Cause Failure And Will Void The MFR'S Warranty. Contractor Is Responsible For Painting The Cables With The Plug Ends, Connectors, Boxes, And Splitters Covered During The Painting Process.
- All Light Fixtures Must Have Min. 5'-0" Of Cable 'Slack' For Future Fixture Maneuverability By Tenant.

ALLOWANCES

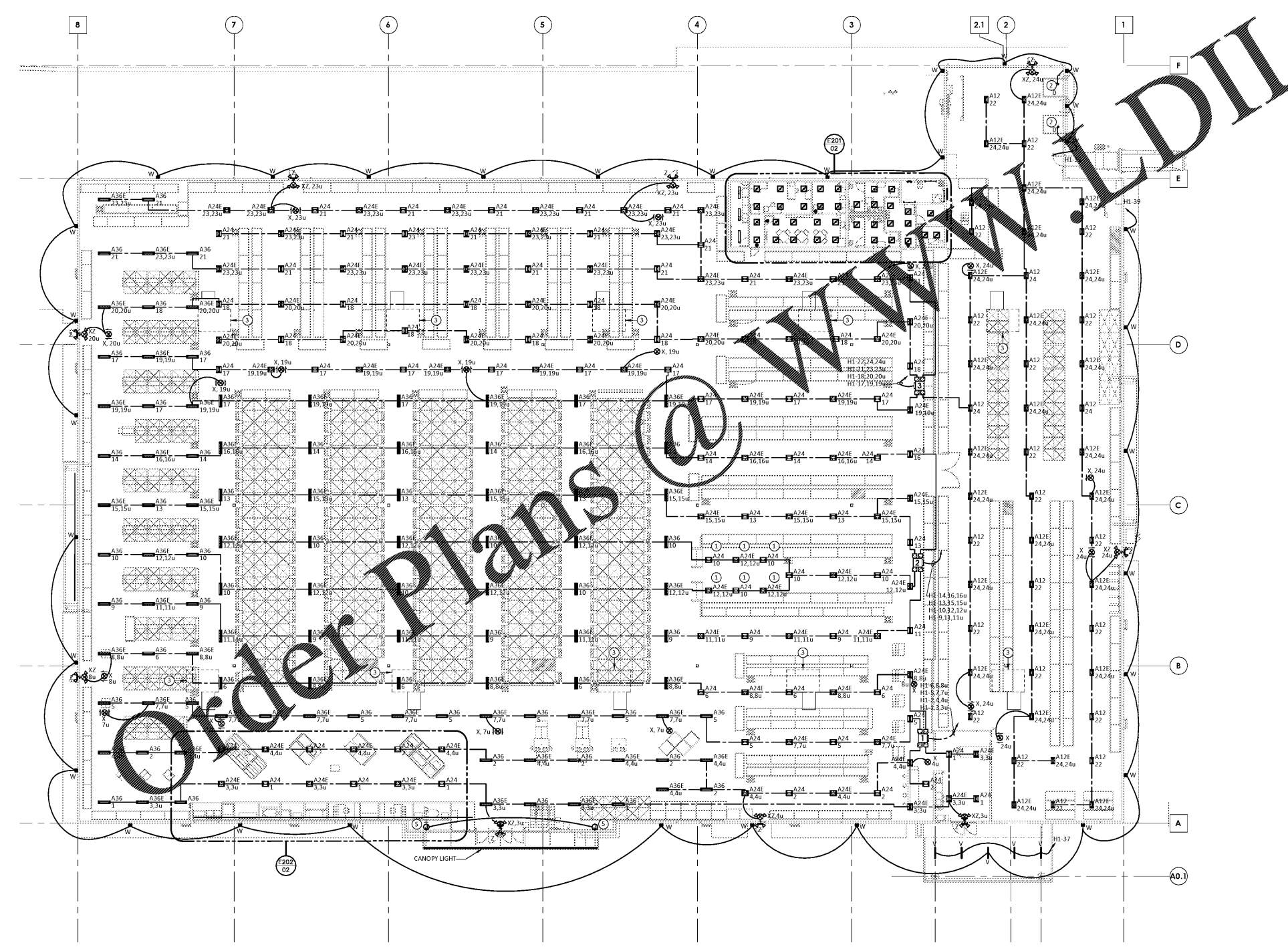
- Provide Allowance To Relocate (40) Light Fixtures In Any Direction To Account For Racking Relocations At No Additional Cost.
- Provide Allowance To Install (15) Additional Emergency Light Fixtures At No Additional Cost.

LEGEND

SYMBOL	DESCRIPTION	NOTE
---	HOME RUN	
---	HARD WIRED CIRCUITING	
---	MODULAR WIRING CABLING	
---	LOW VOLTAGE WIRING. #14 AWG UNO	
⊕	WIRE DESIGNATION TICK MARKS (ISOLATED GROUND GROUND NEUTRAL SWITCHED HOT HOT)	
⊕	PANELBOARD	TOP@6'-6"
⊕	JUNCTION BOX (JBOX)	
⊕	WP-WEATHERPROOF	
⊕	MODULAR WIRING DISTRIBUTION BOX	13/E301
⊕	MODULAR WIRING SPLITTER	13/E301
⊕	4" HIGH BAY LIGHT FIXTURE. HATCH INDICATES EMERGENCY	E402
⊕	2" HIGH BAY LIGHT FIXTURE. HATCH INDICATES EMERGENCY	E402
⊕	2'x2' TROFFER LIGHT FIXTURE. HATCH INDICATES EMERGENCY	E402
⊕	RECESSED CAN LIGHT FIXTURE	E402
⊕	SCONCE	E402
⊕	2" VAPOR TIGHT FIXTURE	E402
⊕	WALL PACK	E402
⊕	DOCK LIGHT	E402
⊕	EXIT SIGN (WALL/PENDANT MOUNTED). HATCHES INDICATE SIDE(S) WITH STENCIL. ARROWS INDICATE CHEVRON(S) DIRECTION	E402
⊕	COMBINATION EXIT SIGN & EMERGENCY LIGHT	E402
⊕	EMERGENCY FIXTURE (BATTERY PACK SUSPENDED)	E402
⊕	REMOTE HEADS	E402
⊕	MANUAL TOGGLE SWITCH: 277/120V, GRAY, STAINLESS PLATE	
⊕	"HUBBELL" #2123	
⊕	OS OCC. SENSING, 120V - 'LUTRON' #MS-OPSSM	20/E301
⊕	POWER PACK	
⊕	SINGLE POLE - SENSORSWITCH RPP-20	20/E301
⊕	OCCUPANCY SENSOR: WHITE	
⊕	LINE VOLTAGE - SENSORSWITCH RCMB-PDT-9	20/E301
⊕	LV- LOW VOLTAGE - SENSORSWITCH RCM-PDT-9	
⊕	PHOTOCELL: WHITE	
⊕	120/277V - SENSORSWITCH RCMB-PC	20/E301
⊕	EQUIPMENT MARK	E401
⊕	ELECTRICAL IDENTIFIER	
⊕	CIRCUIT NUMBER	
⊕	SWITCH LEVEL	
⊕	FIXTURE MARK	E402
⊕	LIGHT FIXTURE IDENTIFIER	

KEY NOTES (SYMBOLS ①, ②, ETC.)

- Fixtures In Wood Inspiration Area And Countertop Solutions Center To Be Mounted At 12'-6" AFF.
- Dock Lights. See 1/E101 For Receptacle Requirements.
- HVAC Supply Diffuser. Coordinate Installation Of Lighting With Diffusers. Provide Sway Bracing As Required To Prevent Swaying Due To Supply Air. Verify Exact Location In Field.
- Provide J-Box For Transition From Reloc To Hardwired Circuiting.
- Provide J-Boxes At 15'-0" AFF For Canopy Electrical Connection, 2 Locations, And Make Final Terminations. Canopy Furnished With Lights & Wiring Pre-Installed. Coordinate With Vendor.



2500 WINDY RIDGE
 PARKWAY, SE
 ATLANTA, GA 30339



SBLM Architects
 53 West Whitman Road, Suite 300A
 Huntington Station, NY 11746
 Telephone: 631 683 5588
 Fax: 631 683 5591



A.V. STEWART & ASSOCIATES
 CONSULTING ELECTRICAL ENGINEERS
 1000 E. Truman Road, Suite 101
 SCHEFFERS AVENUE 101
 Phone: (813) 943-7400
 Fax: (813) 943-7400
 www.avstewart.com



db associates
 CONSULTING ELECTRICAL ENGINEERS
 1000 E. Truman Road, Suite 101
 SCHEFFERS AVENUE 101
 Phone: (813) 943-7400
 Fax: (813) 943-7400
 www.dbassociates.com



CCI CONSULTANTS, INC.
 2500 WINDY RIDGE PARKWAY, SUITE 300
 ATLANTA, GEORGIA 30339
 404-525-3633



vhb
 501 East Kennedy Blvd., Suite 1010
 Tampa, FL 33602-5600
 Telephone: 407 782 1719
 Fax: 407 353 9557

PROJECT

FLOOR DECOR
 WESLEY CHAPEL, FL

25737 SIERRA CENTER
 BOULEVARD
 LUTZ, FL 33559

ISSUE DATE: 01/27/2020
 STORE NUMBER: 888523
 AREA: 79,926
 JOB NUMBER: 019134
 PROJECT TYPE: 2019-02

ISSUE

NO.	DATE	DESCRIPTION
1	01/27/2020	ISSUE FOR PERMIT
2	01/27/2020	ISSUE FOR CONSTRUCTION

SCALE



David P. Reed
 SHEET

LIGHTING PLAN

DRAWN: HY
 CHECKED: TH

E102

This Drawing is the Property of DDB Associates Consulting Engineers, P.C. It Was Prepared Exclusively for This Particular Project And is Limited to This Project Only. Unauthorized Reproduction Or Other Use Of These Drawings Or Plans is Prohibited.