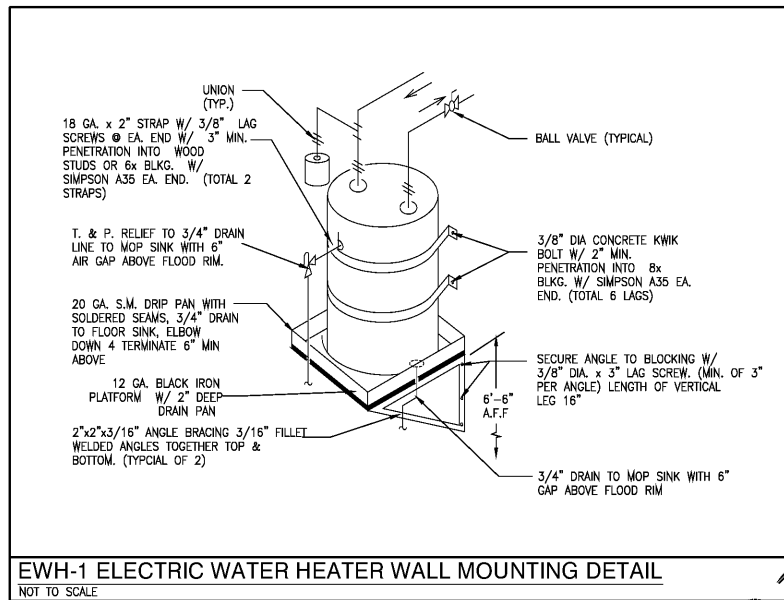


PLUMBING FIXTURE SCHEDULE					
MARK	FIXTURE, MODEL NUMBER AND DESCRIPTION	ROUGH-IN			
		WASTE	VENT	CW	HW
EW-C-1	ELECTRIC WATER COOLER, ADA COMPLIANT, ELKAY LZSTLBCWSLK, WALL MOUNTED, DUAL LEVEL FRONT PUSH BUTTON, EZH2O BOTTLE FILLING STATION, STAINLESS STEEL BASINS AND CABINET. CONNECT WATER SUPPLY AND WASTE LINES FROM FOUNTAIN UNIT TO COOLER UNIT. PROVIDE TRAP, SUPPLY, STOP, IN-LINE FILTER, ETC FOR COMPLETE INSTALLATION.	2"	2"	1/2"	--
L-1A	LAVATORY, ADA COMPLIANT, WALL HUNG, AMERICAN STANDARD 0355.012 VITREOUS CHINA. PROVIDE AMERICAN STANDARD 7385.004.002 CHROME FAUCET, 1/2" FLOW RESTRICTOR, GRID DRAIN ASSEMBLY. PROVIDE CARRIER, TRAP, SUPPLIES, STOPS, SANITARY COVERING, ETC FOR COMPLETE INSTALLATION.	2"	2"	1/2"	1/2"
S-1	UTILITY SINK - JUST NO. S9-124 WITH METAL LEGS 12" DEEP 24"x27" TUB. PROVIDE WITH ADA COMPLIANT FAUCET AND SINK SPOUT, ELKAY LK940AT08L4H. PROVIDE TRAP, SUPPLIES, STOPS, ETC FOR COMPLETE INSTALLATION.	3"	2"	1/2"	1/2"
S-2	SINGLE BOWL COUNTERTOP SINK - ELKAY #LR2219, 2 HOLE, 4" CENTERS, 22"x19 1/2"x7 1/2" DEEP, COUNTER MOUNTED, BACK LEDGE, 18 GA., GRADE 18-8 TYPE 304 STAINLESS, SINGLE COMPARTMENT, SATIN FINISHED RIM AND BOWL, SELF RIMMING, 1/2" TAILPIECE, STRAINER, 1/2" 302 S.S. VANDAL RESISTANT, STRAINER BASKET, ELKAY MODEL LK1000CR DECK MOUNTED FAUCET WITH SINGLE LEVER. PROVIDE TRAP, SUPPLIES, STOPS, ETC FOR COMPLETE INSTALLATION.	2"	2"	1/2"	1/2"
W-1A	WATER CLOSET, ADA COMPLIANT, AMERICAN STANDARD 3517C.101.020 AND 418BA.104.020 TANK WHITE VITREOUS CHINA ELONGATED, CHURCH C1011-00 SEAT WHITE OPEN FRONT SEAT LESS COVER, STAINLESS STEEL CHECK HINGE. PROVIDE SUPPLIES, STOPS, WAX RING, ETC FOR COMPLETE INSTALLATION.	3"	2"	1/2"	--

NOTES:
1. LAVATORY & WATER COOLERS SUPPLY SHALL BE BRASS W/ BRASS ANGLE STOPS FOR 1/2" WATER SUPPLY LINES, W/ LOOSE KEY (W/CAP), AND WALL FLANGE. ALL COMPONENTS SHALL BE POLISHED CHROME FINISH. MANUFACTURER: BRASS CRAFT OR APPROVED EQUAL.
2. CAST BODY "P" TRAP 1 1/2" x 1 1/2" WITH HEAVY CAST J-BEND & FLAT CLEANOUT PLUG, SUP NUTS AND WALL FLANGE. ALL COMPONENTS SHALL BE POLISHED CHROME FINISH. MANUFACTURER: BRASS CRAFT OR APPROVED EQUAL.
3. STRAINERS SHALL BE FURNISHED WITH FIXTURES AS REQUIRED. FOR H/C LAVATORY OR SINKS PROVIDE OFFSET TAILPIECE.
4. PROVIDE TRUEBRO MODEL 103 (WHITE), ANTIMICROBIAL HANDI LAV-GUARDS INSTALLATION KIT FOR ALL WHEELCHAIR LAVATORY & SINKS FOR WATER SUPPLIES & WASTE LINE.
5. PROVIDE WATER SUPPLY & "P" TRAP & TRIPLE FILTRATION WATER FILTERS FOR ELECTRIC WATER COOLERS AS OWNER SPECIFICATIONS.
6. THE PLUMBING FIXTURES VENDOR SHALL COORDINATE WITH THE PLUMBING AND GENERAL CONTRACTOR ALL PLUMBING FIXTURES ROUGH IN DIMENSIONS BEFORE CONSTRUCTION BEGINS.
7. UNLESS SHOWN ABOVE, PLUMBING FIXTURES MANUFACTURER, TRIM COLOR AND FINISH SHALL BE FURNISHED AS DIRECTED BY OWNER/ARCHITECT.



PLUMBING SPECIALTIES SCHEDULE				
MARK	DESCRIPTION	MANUFACTURER	MODEL/PART NUMBER	DETAILED DESCRIPTION
CPRV	CALIBRATED PRESSURE RELIEF VALVE	WATTS	MODEL 540C	INSTALL A MINIMUM OF 12" ABOVE WATER HEATER AND PIPE DISCHARGE TO ADEQUATE LOCATION
FCO	FLOOR CLEANOUT	ZURN	ZN1400	DURA-COATED CAST IRON BODY WITH THREADED PLUG AND POLISHED NICKEL BRONZE TOP
FD	FLOOR DRAIN	ZURN	ZN415-P-7B	DURA-COATED CAST IRON BODY WITH 3" BOTTOM OUTLET, TRAP PRIMER CONNECTION AND TYPE "B" STRAINER
FS	FLOOR SINK	ZURN	Z1910-23	8"x8"x6" CAST IRON FLOOR RECEPTOR WITH ALUMINUM BUCKET AND SQUARE SLOTTED GRATE
HB-1	EXTERIOR HOSE BIBB	WOODFORD	965	TEE KEY, CAST BRASS CONSTRUCTION W/ BOX NICKEL PLATE WITH VACUUM BREAKER. 24" A.F.F. EXTERIOR A.F.F.
HB-2	INTERIOR HOSE BIBB	WOODFORD	24-BR	CAST BRASS CONSTRUCTION NICKEL PLATE WITH VACUUM BREAKER. MOUNT 42" A.F.F.
SA	WATER HAMMER ARRESTOR	ZURN	Z1700	ALL STAINLESS STEEL CONSTRUCTION, 3/4" & 1", SIZE PER MANUFACTURER'S RECOMMENDATIONS
SB	SUPPLY BOX	QATEY	39140	GALVANIZED STEEL W/ WHITE POWDER COAT FINISH, 1/4" TURN VALVE, INTEGRAL VACUUM BREAKER & TRIM RING
TD	TRENCH DRAIN	AMERICAN INC	CUSTOM	16 GA STAINLESS STEEL TRENCH AND GRATE AT 1/4" SLOPE. SEE DETAIL FOR MORE INFORMATION
TP	TRAP PRIMER	ZURN	Z1022	ALL BRONZE BODY WITH INTEGRAL VACUUM BREAKER (ADDITIONAL OUTLET DISTRIBUTION UNIT AS REQUIRED)
VB	VACUUM BREAKER	WATTS	SERIES 8	BRASS BODY, CHROME FINISH
WCO	WALL CLEANOUT	ZURN	Z1446	DURA-COATED CAST IRON CLEANOUT TEE WITH THREADED PLUG AND ROUND STAINLESS STEEL ACCESS COVER
YCO	YARD CLEANOUT	ZURN	Z1474	HEAVY DUTY DURA-COATED CAST IRON CLEANOUT HOUSING WITH SECURE SCORRIATED COVER

EXPANSION TANK SCHEDULE													
MARK	MAKE & MODEL	WATER HEATER STORAGE CAPACITY	SUPPLY PRESSURE	PRE-CHARGE PRESSURE	RELIEF VALVE PRESSURE	INITIAL TEMP	FINAL TEMP	EXPANSION FACTOR	CALCULATED		ACTUAL		CONNECTION SIZE
									ACCEPTANCE VOLUME	TOTAL VOLUME	ACCEPTANCE VOLUME	TOTAL VOLUME	
ET-1	WATTS PLE-5	10 GALLONS	60 PSI	40 PSI	95 PSI	70°F	110°F	0.0062	0.06	0.33	1.26	2.1	3/4"

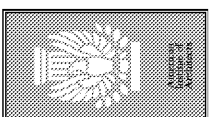
NOTES:
1. ASME CONSTRUCTION SHALL BE STANDARD.
2. PROVIDE ALL NECESSARY ACCESSORIES.
3. PROVIDE AIR CHARGE FITTING.

WATER HEATER SCHEDULE												
MARK	MAKE & MODEL	TYPE	DIMENSIONS	STORAGE (GALLONS)	RECOVERY GALLONS/HR	ELECTRICAL					SHIPPING WEIGHT	
						NUM OF ELEMENTS	KW EA	KW TOTAL	VOLTAGE	PHASE		
EWH-1	A.O. SMITH EJC-10	TANK TYPE ELECTRIC	16 5/8" X 18 1/4"	10	8090°F	1	1.85	1.85	120	1	85	

NOTES:
1. PROVIDE FACTORY INSTALLED HEAVY DUTY ELECTRICAL JUNCTION BOX, CONTROLS.
2. INSTALL WATER HEATER IN ACCORDANCE TO SPC, SMC CODES, NEC, AND APPLICABLE STANDARDS AND MANUFACTURER'S RECOMMENDATIONS.
3. CONTACT MANUFACTURERS REPRESENTATIVE FOR HEATERS ELECTRICAL DATA BEFORE FINAL ORDER IS PLACED.
4. INSTALL WATER HEATER IN ACCORDANCE WITH BUILDING CODE, PLUMBING MECHANICAL (WITH LATEST AMENDMENTS) CODES, ENERGY CODE, AND APPLICABLE STANDARDS AND MANUFACTURER'S RECOMMENDATIONS.
5. PROVIDE BRASS DRAIN VALVE, & ALL REQUIRED OPTIONS TO COMPLETE THE INSTALLATION.
6. PROVIDE MIXING VALVE SET AT 110°F TO HEAT FIXTURES REQUIRING DOMESTIC HOT WATER AS REQUIRED.

Order Plans @ WWW.WDOnline.com

ISSUE	DATE	BY:
REVIEW	01/01/01	XX
PERMIT	01/01/01	XX
REV.		
REV.		
REV.		
REV.		
REV.		



Construction Documents for:
TIRE CHOICE - GOLDENROD
7412 HOFFNER AVE
ORLANDO, FLORIDA

Joseph H. Griner III, P.E. FL. 39491

commercial residential architecture
FRAZE design
FLIC NO. AA2000053
ST. PETERSBURG, FLORIDA 33712
1750 CENTRAL AVENUE
PHONE: 727/526-3606
FAX: 727/526-3606

This item has been electronically signed and sealed by Joseph H. Griner, III using a Digital Signature and data. Printed copies of this document are not considered signed and sealed and the signature must be verified on any electronic copies.

THESE DOCUMENTS, DESIGNS, NOTES, DETAILS AND SPECIFICATIONS AND CONCEPTS ARE THE SOLE PROPERTY OF FRAZE DESIGN, INC. AND SHALL NOT BE REPRODUCED, RE-USED OR COPIED FOR OTHER PROJECTS, IN WHOLE OR PART WITHOUT THE WRITTEN CONSENT OF FRANK FRAZE, ARCHITECT, AIA.
ALL RIGHTS ARE RESERVED BY THE ARCHITECT IN ACCORDANCE WITH U.S. COPYRIGHT AND PATENT LAWS. UNAUTHORIZED REPRODUCTION WILL BE PROSECUTED TO THE FULL EXTENT OF THE LAW.

THE DRAWINGS & DESIGN ARE VALID FOR 12 MONTHS FROM DATE OF BEING SEALED.

TO THE BEST OF THE ARCHITECT OR ENGINEER'S KNOWLEDGE AND BELIEF, THESE PLANS AND SPECIFICATIONS COMPLY WITH THE 6TH EDITION 2011 FLORIDA BUILDING CODE. IN ADDITION TO ANY OTHER APPLICABLE BUILDING CODES AND MINIMUM FIRE SAFETY STANDARDS.
ALL DIMENSIONS AND JOB CONDITIONS SHALL BE VERIFIED BY THE CONTRACTOR. ANY AND ALL DISCREPANCIES SHALL BE REPORTED TO THE ARCHITECT PRIOR TO COMMENCEMENT OF CONSTRUCTION.

GRINER
GRINER ENGINEERING, INC.
3125 Fifth Ave N., Suite 300
St. Petersburg, Florida 33713
Phone: (727)-822-2335
Fax: (727)-821-3361
Certificate of Authorization #3173

Date	12-06-2019
Drawn	JL
Designed	JL
EOR	JHG
Job no.	19113

SHEET TITLE
PLUMBING
DETAILS &
SCHEDULES
SHEET NUMBER
P-6