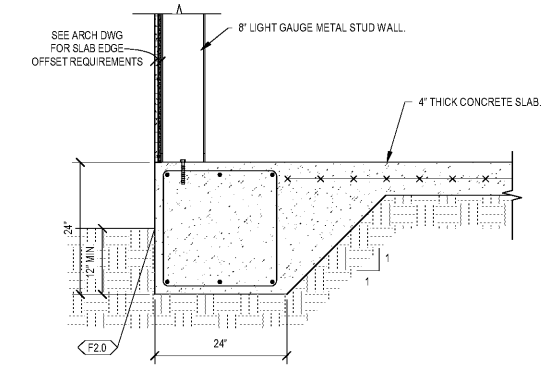
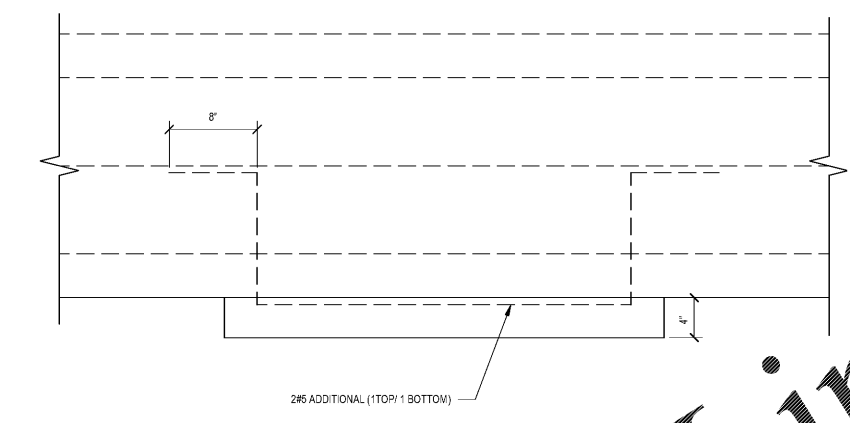


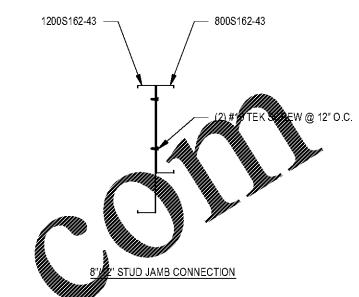
1 SECTION
S-3 1/2" = 1'-0"



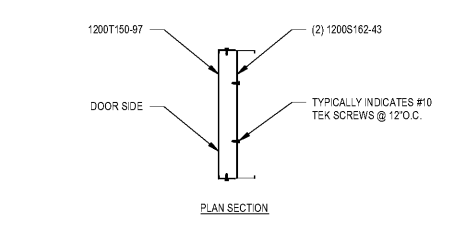
2 SECTION
S-3 3/4" = 1'-0"



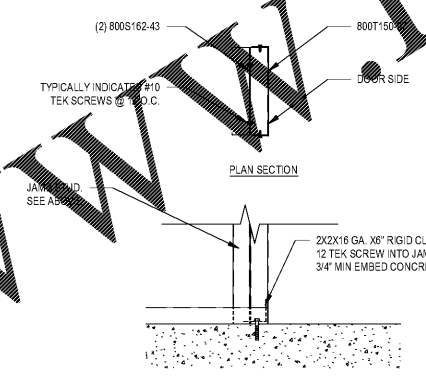
3 SECTION
S-3 1 1/2" = 1'-0"



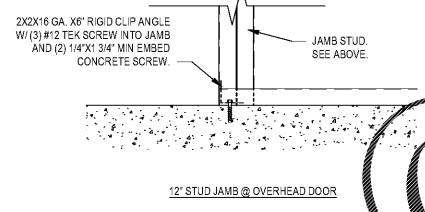
4 SECTION
S-3 1 1/2" = 1'-0"



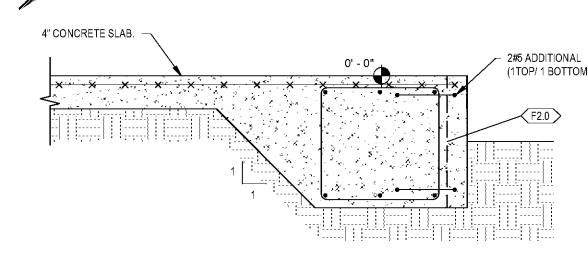
5 SECTION
S-3 1 1/2" = 1'-0"



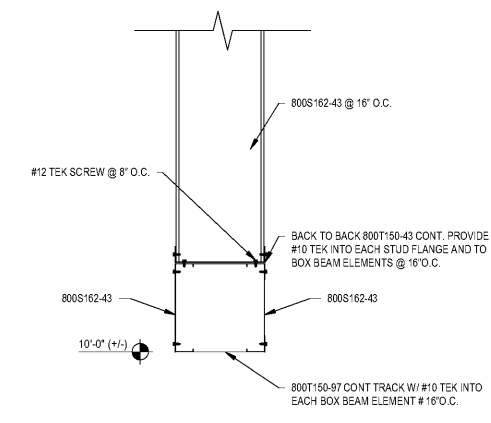
6 SECTION
S-3 1 1/2" = 1'-0"



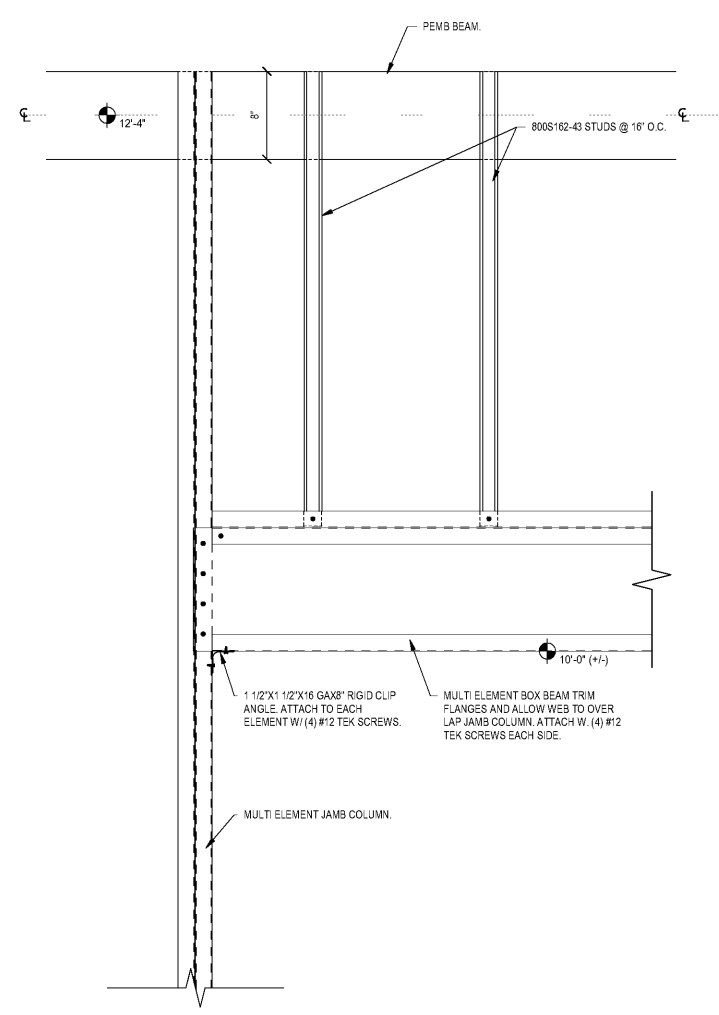
7 SECTION
S-3 1 1/2" = 1'-0"



8 SECTION
S-3 3/4" = 1'-0"



9 TYPICAL HEADER SECTION
S-3 1 1/2" = 1'-0"



10 TYPICAL HEADER DETAIL
S-3 1 1/2" = 1'-0"

Order Plans @ www.LDILine.com

NO.	DATE	DESCRIPTION

Project Status
SEALER VAN NOSTRAND
NO. 67580
STATE OF FLORIDA
ENGINEER OF RECORD
Cordell S. Van Nostrand
FL P.E. # 67580
CERT. OF AUTH. # 31580

TIRE CHOICE - GOLDENROD
7412 HOFFNER AVE
ORLANDO, FLORIDA
BUILDING SECTIONS

Project No.	19200
Drawn By	BGN
Checked By	Checker
Date	11/27/19

S-3
Originals printed @ 24" x 36"
scale as required
All rights reserved. © 2016

To the best of the Architects or Engineer's knowledge, the plans and specifications comply with the applicable minimum building codes and applicable fire safety standards as determined by local authority in accordance with Chapter 553 and 663 of Florida Statutes.