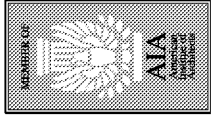


ISSUE	DATE	BY:
REVIEW	02/03/20	MF
PERMIT	02/03/20	MF
REV.		
REV.		
REV.		
REV.		
REV.		

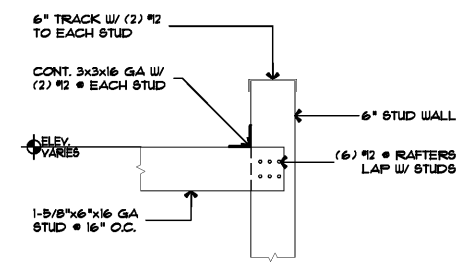


Construction Documents for:
TIRE CHOICE - GOLDENROD
 7412 HOFFNER AVE
 ORLANDO, FLORIDA

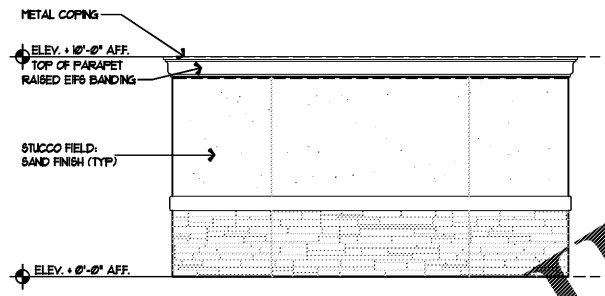
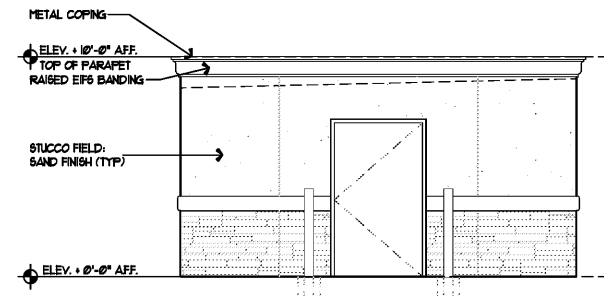
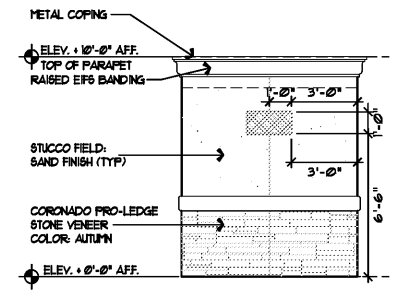


FRAZEE design
 commercial residential architecture
 ST. PETERSBURG, FLORIDA 33712
 1750 CENTRAL AVENUE
 PHONE: 727/328-3608

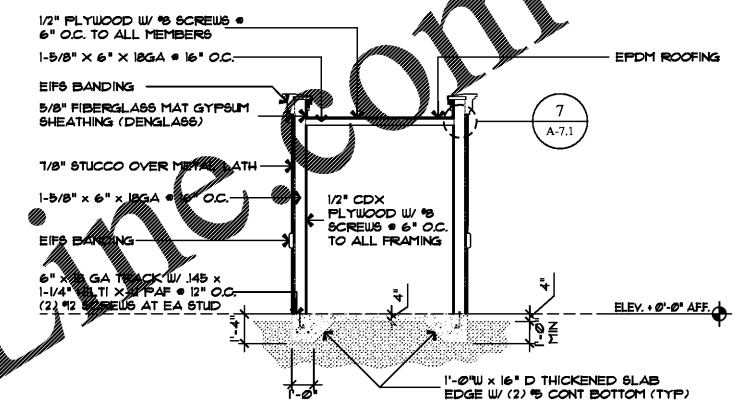
SHEET TITLE
**TIRE SHED
 PLANS & ELEVATION**
 SHEET NUMBER
A-14



7 TIRE STORAGE - ROOF FRAMING DETAIL
 SCALE: 1" = 1'-0"

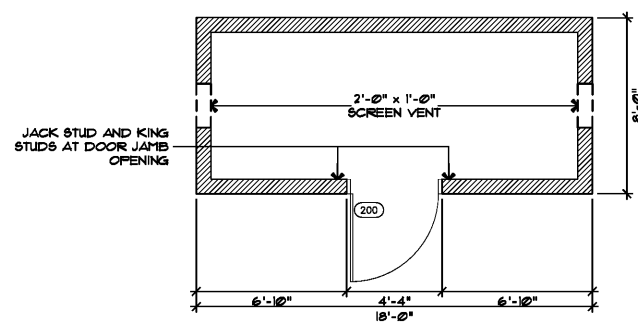


1 TIRE STORAGE - ELEVATIONS
 SCALE: 1/4" = 1'-0"

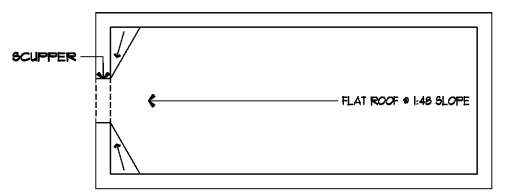


2 TIRE STORAGE - SECTION
 SCALE: 1/4" = 1'-0"

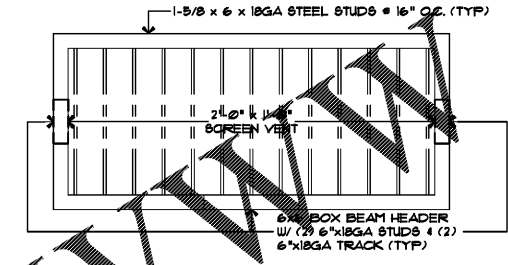
LOCATION	COLOR	SHERWIN WILLIAMS COLOR #
TRIM	IBIS WHITE	SW 1000
COLUMNS	SWEET ORANGE	SW 6351
FIELD	INTRICATE IVORY	SW 6350



3 FLOOR PLAN
 SCALE: 1/4" = 1'-0"



4 ROOF PLAN
 SCALE: 1/4" = 1'-0"

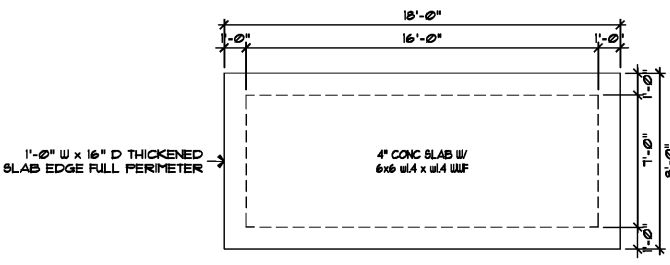
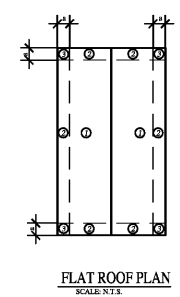
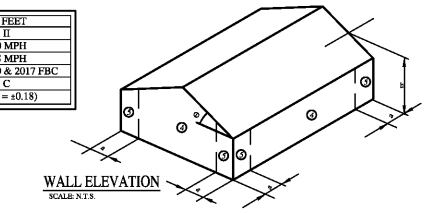


5 ROOF FRAMING PLAN
 SCALE: 1/4" = 1'-0"

WIND LOAD SCHEDULE - TIRE STORAGE BUILDING

SCHEDULE OF COMPONENTS AND CLADDING LOADS				
ZONE	DESCRIPTION	TRIBUTARY AREA (SF)	IN (PRESSURE) (PSF)	OUT (PRESSURE) (PSF)
1	ROOF INTERIOR ZONE	LESS THAN 20	+16.0	-25.7
		MORE THAN 100	+16.0	-23.6
2	ROOF, EDGE ZONE	LESS THAN 20	+16.0	-43.2
		MORE THAN 100	+16.0	-38.6
2	ROOF, OVERHANG, EDGE ZONE	LESS THAN 20	-	-37.1
		MORE THAN 100	-	-36.4
3	ROOF, CORNER ZONE	LESS THAN 20	+16.0	-65.0
		MORE THAN 100	+16.0	-53.9
3	ROOF, OVERHANG, CORNER ZONE	LESS THAN 20	-	-61.1
		MORE THAN 100	-	-48.0
4	WALL, INTERIOR ZONE	LESS THAN 20	+25.8	-27.9
		MORE THAN 100	+24.6	-26.8
5	WALL, EDGE ZONE	LESS THAN 20	+21.9	-24.1
		MORE THAN 100	+23.8	-34.5

h =	3.0 FEET
RISK CATEGORY	II
ULTIMATE WIND SPEED	140 MPH
Vent WIND SPEED	108 MPH
DESIGN CODES	ASCE7-10 & 2017 FBC
EXPOSURE	C
ENCLOSED	(Cp1 = +0.18)



6 FOUNDATION PLAN
 SCALE: 1/4" = 1'-0"

Order Plans @

THESE DOCUMENTS, DESIGNS, NOTES, DETAILS AND SPECIFICATIONS AND CONCEPTS ARE THE SOLE PROPERTY OF FRAZEE DESIGN, INC. AND SHALL NOT BE REPRODUCED, RE-USED OR COPIED FOR OTHER PROJECTS, IN WHOLE OR PART WITHOUT THE WRITTEN CONSENT OF FRANK FRAZEE ARCHITECT, AIA.

ALL RIGHTS ARE RESERVED BY THE ARCHITECT IN ACCORDANCE WITH U.S. COPYRIGHT AND PATENT LAWS. UNAUTHORIZED REPRODUCTION WILL BE PROSECUTED TO THE FULL EXTENT OF THE LAW.

* THE DRAWINGS & DESIGN ARE VALID FOR 12 MONTHS FROM DATE OF BEING SEALED.

TO THE BEST OF THE ARCHITECT OR ENGINEER'S KNOWLEDGE AND BELIEF, THESE PLANS AND SPECIFICATIONS COMPLY WITH THE 6TH EDITION 2017 FLORIDA BUILDING CODE. IN ADDITION TO ANY OTHER APPLICABLE BUILDING CODES AND MINIMUM FIRE SAFETY STANDARDS.

ALL DIMENSIONS AND JOB CONDITIONS SHALL BE VERIFIED BY THE CONTRACTOR. ANY AND ALL DISCREPANCIES SHALL BE REPORTED TO THE ARCHITECT PRIOR TO COMMENCEMENT OF CONSTRUCTION.