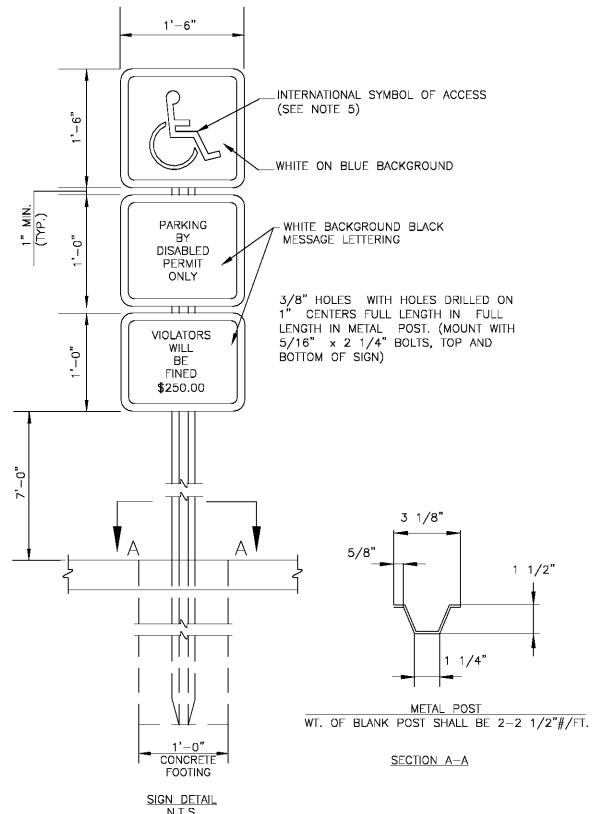
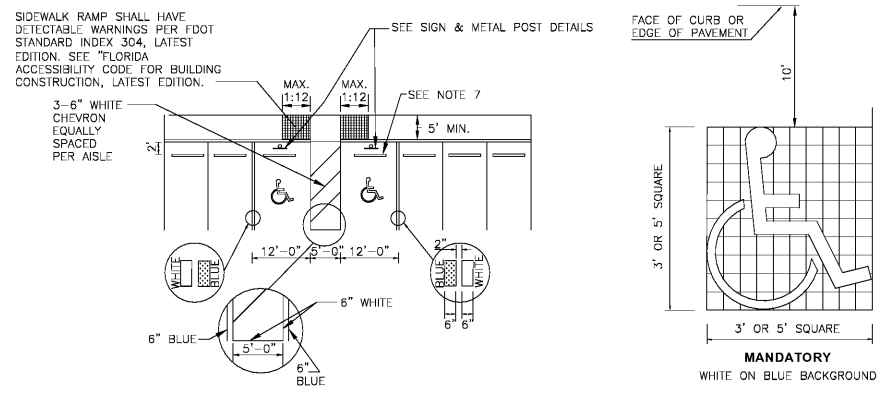
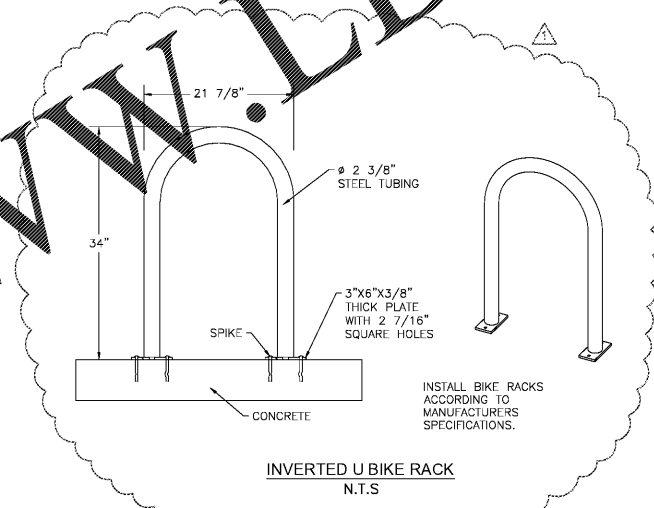


WWW.LDILine.com



- NOTES:
- METAL POST TO BE GALVANIZED. ALL BOLTS, NUTS, WASHERS AND SCREWS MUST BE RUSTPROOF.
 - CONCRETE FOR FOOTING SHALL BE PORTLAND CEMENT AND HAVE A MINIMUM COMPRESSIVE STRENGTH OF 3,000 P.S.I.
 - SIGNS WILL BE FABRICATED BY USING REFLECTING COATING IN THE SYMBOL, MESSAGE AND BORDER APPLIED TO A SHEET ALUMINUM BACKING (.080) IN THICKNESS.
 - MESSAGE LETTERING SHALL BE UPPER CASE (BLACK) (SERIES C) 1.5" HIGH IN ACCORDANCE WITH MANUAL ON UNIFORM TRAFFIC CONTROL DEVICES, EXCEPT AS NOTED ON SIGN DETAIL.
 - THE SYMBOL IS COMPOSED OF TWO ELEMENTS, A WHITE WHEELCHAIR FIGURE (WHICH SHOULD ALWAYS FACE RIGHT) ON A SQUARE BACKGROUND, INTERNATIONAL BLUE IN COLOR (FED. STD. 595b, COLOR #15180).
 - SIGN POST SHALL BE MIN. 2'-0" CLEAR FROM BACK OF CURB.
 - THE USE OF PROPERLY LOCATED BOLLARDS IN ACCESSIBLE PARKING SPACES ARE ACCEPTABLE SUBSTITUTES FOR REGULAR BUMPER GUARD.
 - MINIMUM NUMBER OF ACCESSIBLE PARKING SPACES SHALL BE PER FLORIDA ACCESSIBILITY BUILDING CODE SECTION 4.6.3.
 - ALL COMPONENTS OF THE HANDICAPPED RAMPS MUST BE IN STRICT CONFORMANCE WITH FDOT STANDARD INDEX 304, LATEST REVISION.

NATIVE engineering,plc
 P.O. BOX 2905
 LAND O' LAKES, FL 34659
 (813) 536-2539
 CERTIFICATE OF AUTHORIZATION NUMBER: 28789

REVISIONS

NO.	DATE	DESCRIPTION

AUTO REPAIR @ GOLDENROD MARKETPLACE
 FOR
AMPROP ENTERPRISES GOLDENROD, LLC
 4201 WEST CYPRESS STREET, TAMPA, FL 33607

DETAILS SHEET

JOSHUA S. BRADLEY
 State of Florida,
 Professional Engineer,
 License No. 60020

THIS DRAWING HAS BEEN
 DIGITALLY SIGNED AND SEALED BY
 JOSHUA S. BRADLEY ON THE DATE
 INDICATED HEREIN. ANY CHANGES
 TO THIS DOCUMENT ARE NOT CONSIDERED
 VALID UNLESS THEY ARE MADE TO THE
 ORIGINAL AND SIGNED AND SEALED AND THE
 SIGNATURE MUST BE VERIFIED ON ANY
 ELECTRONIC COPIES.

SHEET NUMBER
C8
 S-T-R
 23-23-30