

ARCHITECTS - ENGINEERS
PLANNING - INTERIOR DESIGN

2121 Pierce & Ivan Boulevard
Suite 615
Loral, Bohler, Florida 33124
1-888-443-2823 1-305-443-3788

LDI Associates, a CORPORATION
has prepared this drawing for the project of 100
1001 N. Federal Highway, Hollywood, Florida 33020.
This drawing is provided for the project of 100
1001 N. Federal Highway, Hollywood, Florida 33020.
It is the responsibility of the user to verify the
accuracy of the information shown on this drawing.
No warranty is made by LDI Associates for the
accuracy of the information shown on this drawing.

LDI project number
201701

Client project number
P001838

shear title
**LIGHTING AND POWER
FIRST FLOOR
PARTIAL PLAN
BUILDING 14**

Revisions

△	Blgd. Dept. Cmts.	11-13-2018
△	Blgd. Dept. Cmts.	04-24-19

ISSUED FOR:
PERMIT SET

Issue Date:
06-29-18

Drawn by: **CA** Checked by: **IP**

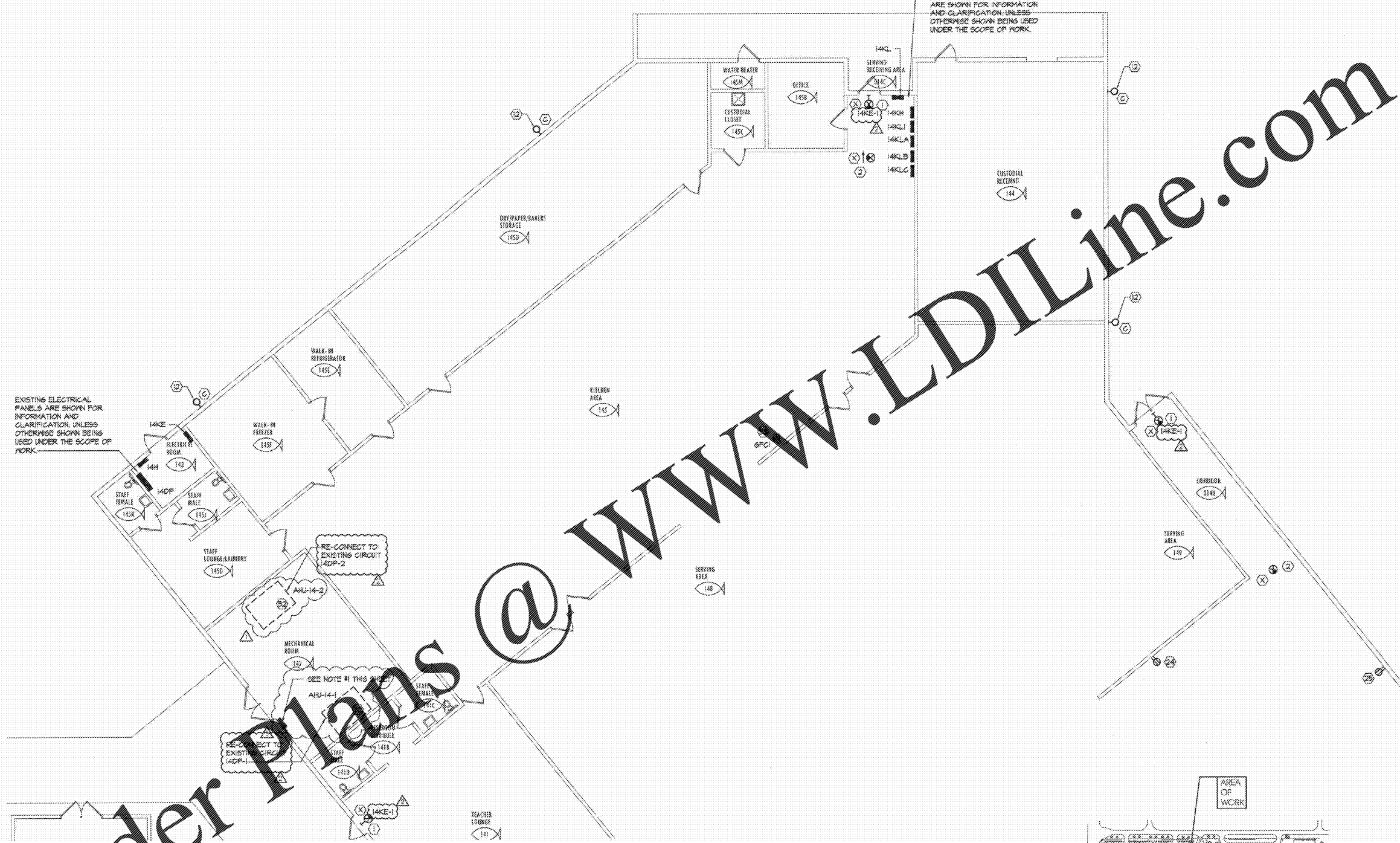
Scale:
AS INDICATED

Professional Engineer
CARLOS A. ALVARADO
0527
STATE OF FLORIDA
Professional Engineer

Sheet number
E1.11

Sheet:
16 of 48

BUILDING NO. 14



Order Plans @ www.LDILine.com

FIRST PARTIAL FLOOR PLAN, BUILDING 14 -PARTIAL 1/8" = 1'-0"

NOTES:

- PROVIDE BANK 2 ROWS OF 5 WALL MOUNTED REMOTE TEST SWITCHES WITH LED LIGHT FOR AHU-14-1 AND AHU-14-2 DUCT MOUNTED SMOKE DETECTORS.

NOTE:
ELECTRICAL INFORMATION SHOWN FOR EXISTING EQUIPMENTS HAS BEEN OBTAINED FROM SBEC-PROVIDED AS-BUILT DRAWINGS. CONTRACTOR SHALL, BEFORE WORKING ON MECHANICAL EQUIPMENT, VERIFY ACCURACY OF SBEC-PROVIDED AS-BUILT DRAWINGS INFORMATION. CONTRACTOR SHALL UPDATE AS-BUILT DRAWINGS OF ANY DISCREPANCY UNCOVERED DURING CIRCUITRY VERIFICATION.

