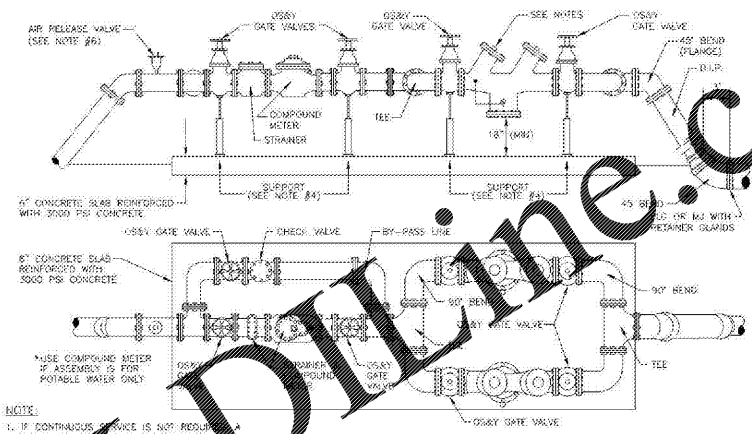


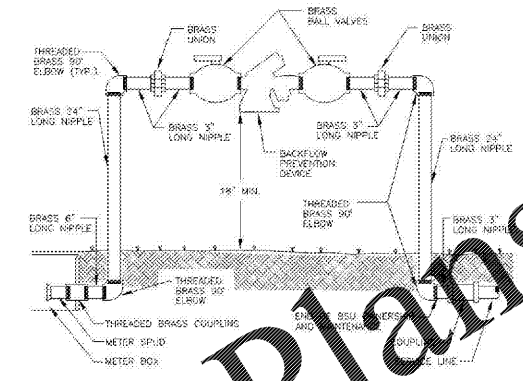
- NOTES:**
1. METER SIZE DETERMINES CONFIGURATION SIZE BETWEEN "A" & "B".
 2. ENTIRE APPARATUS TO BE PAINTED WITH UV RATED PAINT (EPOXY METERS).
 3. CONSULT BSIU BACKFLOW PREVENTION CROSS CONNECTION CONTROL PROGRAM FOR APPROVED SIZES, MODEL NUMBERS & MANUFACTURERS.
 4. "C" SCALE BACKFLOWS REQUIRE A LOCATION FOR AN AIR RELEASE VALVE.

STANDARD METER/BACKFLOW ASSEMBLY DETAIL
(3" OR LARGER)
BF-1

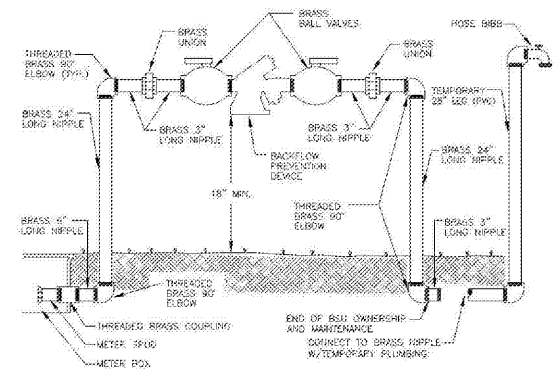


- NOTES:**
1. IF CONTRASTING STRIKE IS NOT REQUIRED, A SINGLE BACKFLOW PREVENTER MAY BE INSTALLED, VALVES AND BENDS ELIMINATED.
 2. DEVICE DEPENDENT ON DEGREE OF HAZARD.
 3. METER BYPASS LINE OPTIONAL, DEPENDENT ON CUSTOMER NEEDS/DEGREE OF HAZARD/METER REPAIR.
 4. SUPPORT TO BE STAINLESS STEEL.
 5. CONSULT BSIU BACKFLOW PREVENTION CROSS CONNECTION CONTROL PROGRAM FOR APPROVED SIZES, MODEL NUMBERS & MANUFACTURERS.

3" OR LARGER COMPOUND METER AND BACKFLOW PREVENTER
(ONLY WITH BSIU PRIOR APPROVAL)
BF-2



BACKFLOW PREVENTION DEVICE 3/4", 1", 2"
(NEW INSTALLATIONS BY BSIU)
(EXCEPT FOR BACKFLOWS ON FIRE LINES)
BF-3



CONTRACTOR'S TEMPORARY HOSE BIBB BACKFLOW PREVENTION DEVICE 3/4", 1", 2"
(INSTALLED BY BUILDER)
BF-4

Order Plans @ www.wdline.com

CONSULTANTS COMMENTS

B.S.I.U. DETAIL SHEETS MUST REMAIN AS IS (NO ALTERATIONS) IF ADDITIONAL DETAILS ARE REQUIRED SUBMIT ON SEPARATE SHEET

CLIENT: PROJECT:

 Bonita Springs Utilities, Inc.	TITLE:	BACKFLOW DETAILS	SCALE: NOT TO SCALE
	DATE:	APRIL 2019	DWG # BF-FLW.DWG
11900 E. TERRY STREET BONITA SPRINGS, FLORIDA 34135 PHONE: (239) 992-0711 FAX: (239) 992-9223			SHEET: OF

DETAIL BF-4 DELETED

BOHLER ENGINEERING
SITE CIVIL AND CONSULTING ENGINEERING
LAND SURVEYING
PROGRAM MANAGEMENT
LANDSCAPE ARCHITECTURE
SUSTAINABLE DESIGN
PERMITTING SERVICES
TRANSPORTATION SERVICES

REVISIONS

REV	DATE	COMMENT	BY

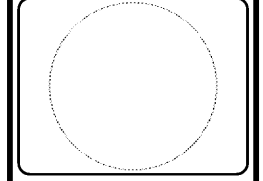
811
KNOW WHAT'S BELOW
ALWAYS CALL 811
BEFORE YOU DIG
It's fast. It's free. It's the law.

NOT APPROVED FOR CONSTRUCTION

PROJECT No.: FLB180133
DRAWN BY: L.J.L. AS
CHECKED BY: L.J.L. AS
DATE: 01/27/2020
SCALE: AS SHOWN
CAD I.D.: SDD

BOHLER ENGINEERING
PROJECT: **ENGINEERING PLANS**
FOR **ENCORE REAL ESTATE**
LOCATION OF SITE
28100 S TAMAMI TRAIL
BONITA SPRINGS, FL 34134
LEE COUNTY, FLORIDA

BOHLER ENGINEERING
3820 NORTHDAL BLVD., SUITE 300B
TAMPA, FLORIDA 33624
Phone: (813) 812-4100
Fax: (813) 812-4101
FLORIDA BUSINESS CERT. OF AUTH. No. 30780
LANDSCAPE ARCHITECT LICENSE No. LC-120000014



SHEET TITLE: **CONSTRUCTION DETAILS**
SHEET NUMBER: **C-903**