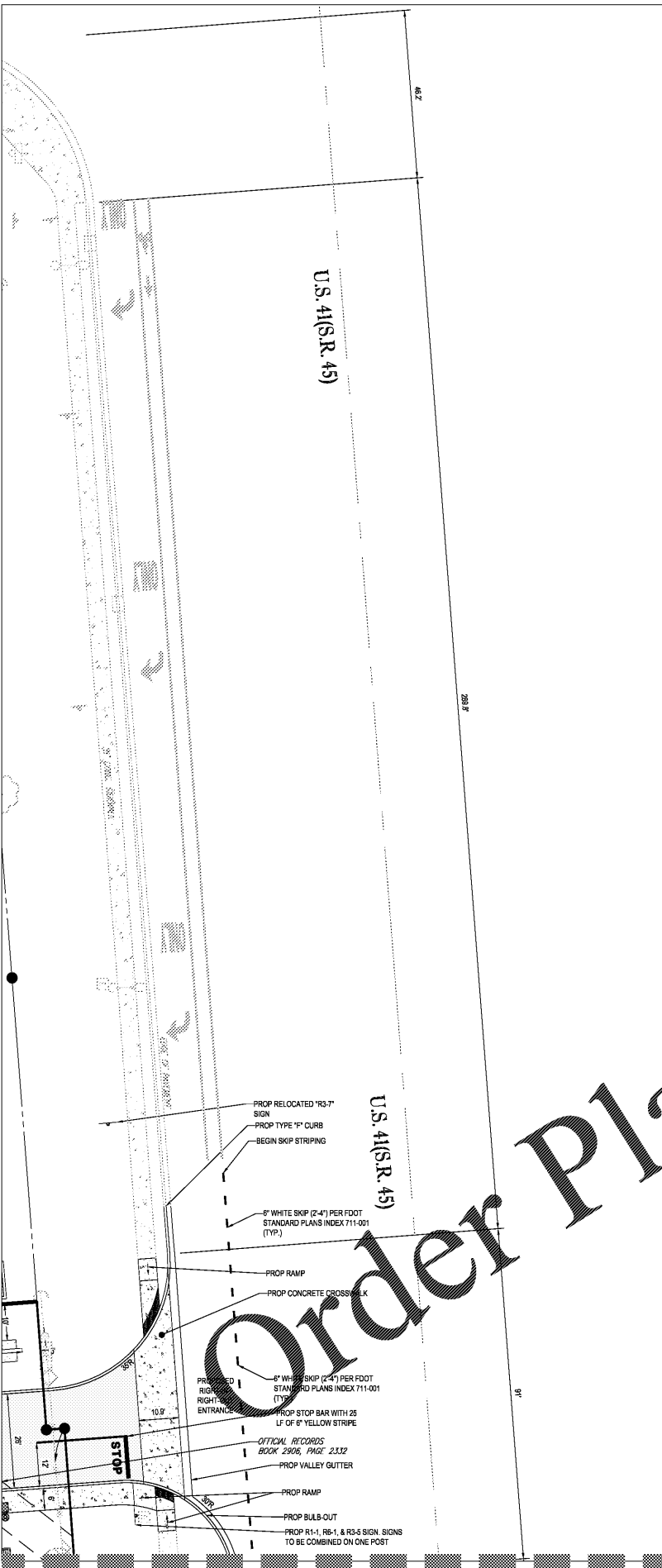
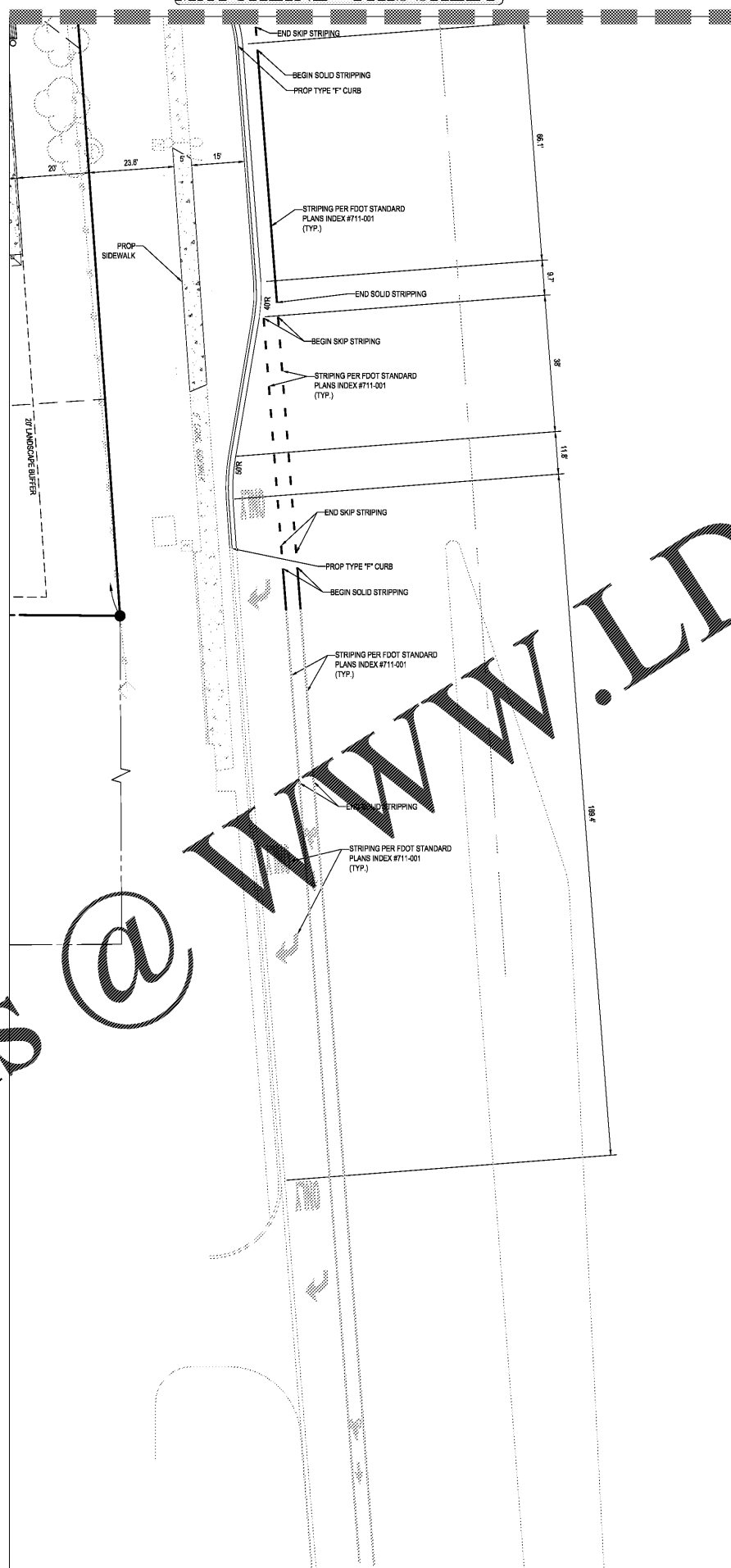


MATCHLINE - THIS SHEET

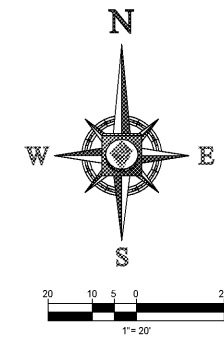


MATCHLINE - THIS SHEET



LEGEND:

- EX PROPERTY BOUNDARY LINES
- EX ADJACENT BOUNDARY LINES
- PROP PROPERTY BOUNDARY LINES
- EX EASEMENT LINES
- PROP BUILDING SETBACK
- PROP LANDSCAPE BUFFER
- PROP TYPE 'F' CURB
- PROP SIGN
- PROP CONCRETE PAVEMENT
- PROP PAVY DUTY PAVEMENT



BOHLER ENGINEERING

SITE CIVIL AND CONSULTING ENGINEERING
 LAND SURVEYING
 PROGRAM MANAGEMENT
 LANDSCAPE ARCHITECTURE
 SUSTAINABLE DESIGN
 PERMITTING SERVICES
 TRANSPORTATION SERVICES

16100 W. BAYVIEW BLVD., SUITE 1000, MIAMI, FL 33140
 TEL: (305) 555-1111 FAX: (305) 555-1112
 WWW.BOHLERENGINEERING.COM

REVISIONS			
REV	DATE	COMMENT	BY

811

KNOW WHAT'S BELOW
 ALWAYS CALL 811
 BEFORE YOU DIG

It's fast. It's free. It's the law.

NOT APPROVED FOR CONSTRUCTION

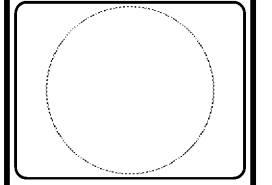
PROJECT No.: FLB180133
 DRAWN BY: L.J.L.
 CHECKED BY: A.S.
 DATE: 01/27/2020
 SCALE: 1" = 20'
 CAD I.D.: SPO

PROJECT:
ENGINEERING PLANS
 FOR
ENCORE REAL ESTATE

LOCATION OF SITE
 28100 S TAMAMI TRAIL
 BONITA SPRINGS, FL 34134
 LEE COUNTY, FLORIDA

BOHLER ENGINEERING

3820 NORTHALE BLVD., SUITE 300B
 TAMPA, FLORIDA 33624
 Phone: (813) 812-4100
 Fax: (813) 812-4101
 FLORIDA BUSINESS CERT. OF AUTH. No. 30790
 LANDSCAPE ARCHITECT LICENSE No. LC20000016



SHEET TITLE:
OFFSITE PAVEMENT MARKING & SIGNAGE PLAN
 SHEET NUMBER:
C-303