



CHAPMAN GRIFFIN LANIER SUSSENBACH ARCHITECTS, INC.

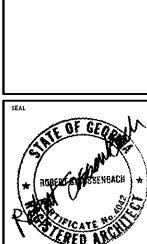
© 2020

THIS DRAWING, THE DESCRIPTIONS OF WORK AND ALL PARTS THEREOF, IS THE PROPERTY OF CHAPMAN GRIFFIN LANIER SUSSENBACH ARCHITECTS, INC. AND MAY NOT BE USED OR REPRODUCED WITHOUT THEIR WRITTEN PERMISSION.

RELEASED FOR CONSTRUCTION

CONSULT

SEAL



DATE NO DESCRIPTION

05/24/19 01 PRELIMINARY SUBMITTAL DESIGN DEVELOPMENT

08/30/19 02 CONSTRUCTION DOCUMENTS

12/04/19 03 CONSTRUCTION CHECK-SET

01/13/20 04 FINAL GDR/PERMIT SET

02/03/20 ISSUED FOR BID

ISSUED FOR BID

ISSUED FOR BID

ISSUED FOR BID

ISSUED FOR BID

ISSUED FOR BID

ISSUED FOR BID

ISSUED FOR BID

ISSUED FOR BID

ISSUED FOR BID

ISSUED FOR BID

ISSUED FOR BID

ISSUED FOR BID

ISSUED FOR BID

ISSUED FOR BID

ISSUED FOR BID

ISSUED FOR BID

ISSUED FOR BID

ISSUED FOR BID

ISSUED FOR BID

ISSUED FOR BID

ISSUED FOR BID

ISSUED FOR BID

ISSUED FOR BID

ISSUED FOR BID

ISSUED FOR BID

ISSUED FOR BID

ISSUED FOR BID

ISSUED FOR BID

ISSUED FOR BID

ISSUED FOR BID

ISSUED FOR BID

ISSUED FOR BID

ISSUED FOR BID

ISSUED FOR BID

ISSUED FOR BID

ISSUED FOR BID

ISSUED FOR BID

ISSUED FOR BID

ISSUED FOR BID

ISSUED FOR BID

CHAPMAN GRIFFIN LANIER SUSSENBACH ARCHITECTS  
400 Galleria Parkway, Suite 100, Atlanta, GA 30339 Phone: 404.733.5493

DOE FACILITY CODE: 660-3066

RIVERWOOD HIGH SCHOOL-PHASE 3

AUDITORIUM/GYMNASIUM ADDITION

6900 RAIDER DRIVE NW SANDY SPRINGS, GA 30328

FULTON COUNTY SCHOOLS RFP NO. 415-20

PROJECT NO. 16015.03

DATE 01/13/20

DRAWN BY: Author

CHECKED BY: Checker

SHEET NO.

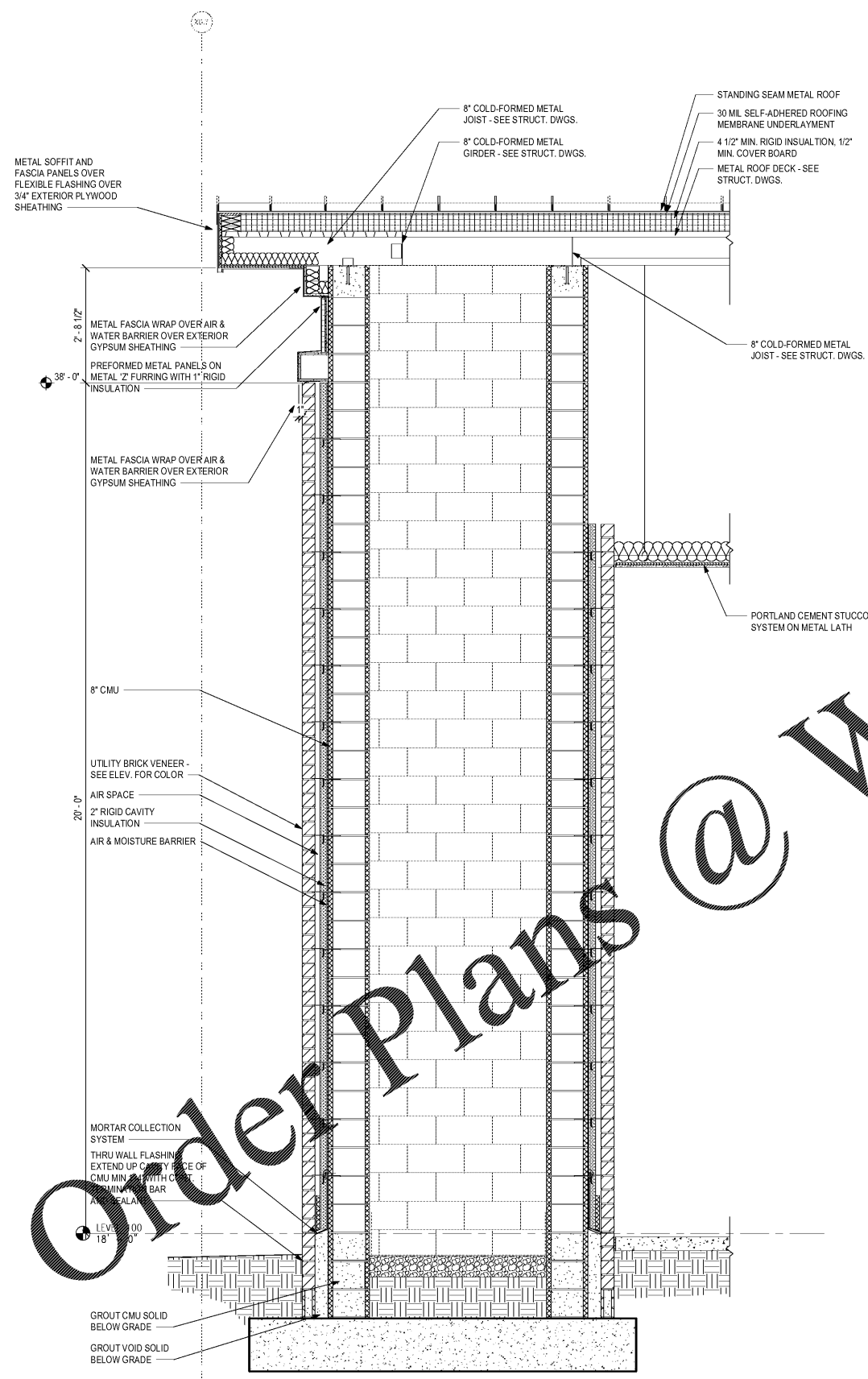
WALL SECTIONS

16015.03

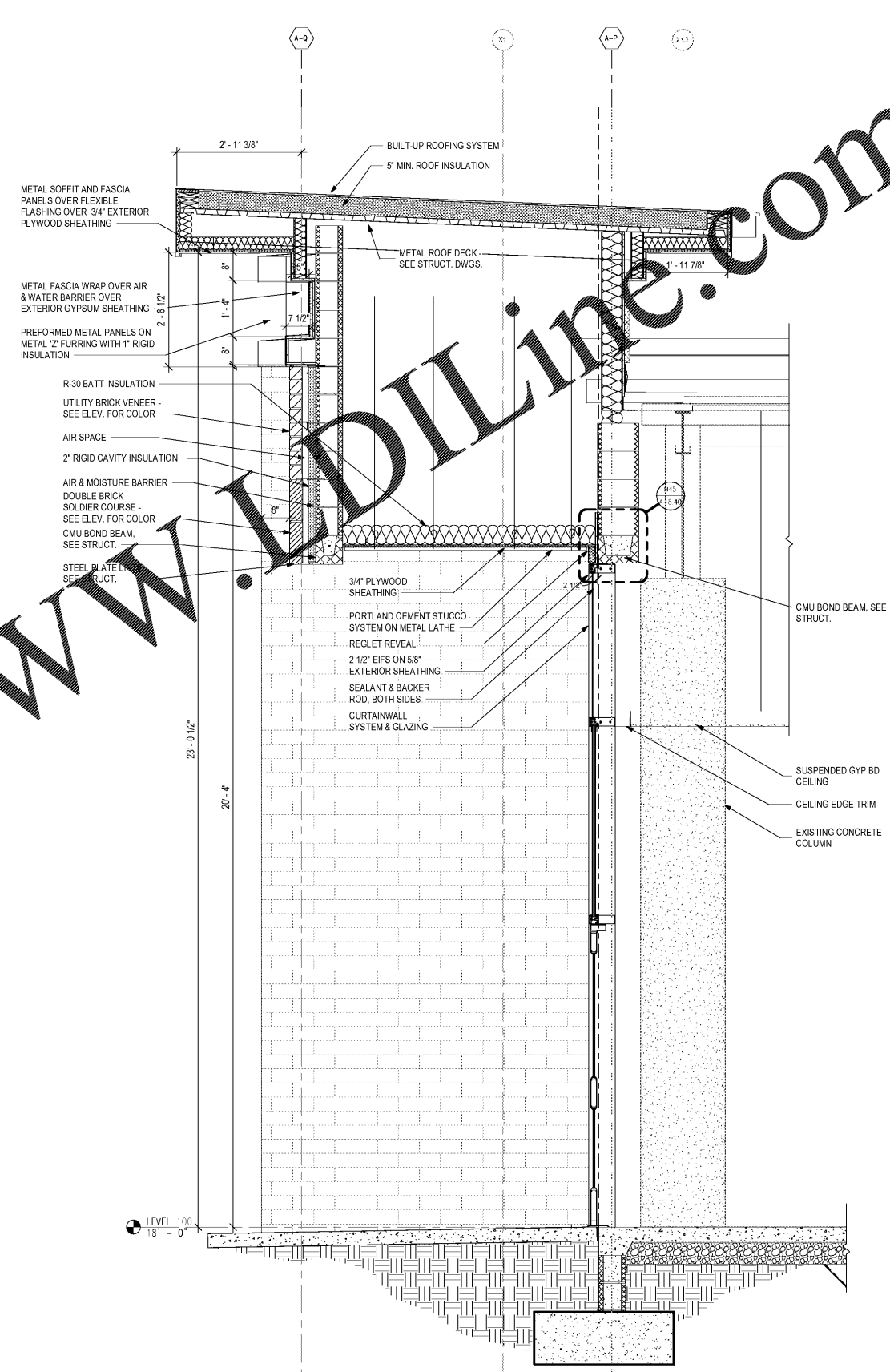
01/13/20

Author

Checker



1 WALL SECTION @ AUDITORIUM LOBBY NORTH ENTRANCE WING WALL  
A-6.36 3/4" = 1'-0"



2 WALL SECTION @ AUDITORIUM LOBBY NORTH ENTRANCE  
A-6.36 3/4" = 1'-0"

Order Plans @ www.wdilline.com

A-6.36