



PHILLIPS

CONSULTANT

SEAL



ISSUE & REVISION RECORD

NO.	DATE	DESCRIPTION
1/22/2019	DESIGN DEVELOPMENT PLANS	
12/20/2019	90% CONSTRUCTION DOCUMENTS	
01/20/2020	PERMIT SET	

PROJECT



CURRENT VERSION: V-0.2 (NOV. 2018)

MALL OF GEORGIA

NEW CONSTRUCTION
4 STORIES-109 GUESTROOMS

CURRENT CODE: BC 2018

CONSTRUCTION TYPE: IIA

OCCUPANCY: R-1

**Hilton Garden Inn Ariston,
Mall of Georgia, Buford, GA**

CLIENT



PHILLIPS JOB NUMBER: 1963613

ISSUE DATE: 01/20/2020

DRAWN BY/CHECKED BY: Author / Checker

DRAWING TITLE
**GUESTUNIT PLANS
"B" DOUBLE QUEEN &
"B2" DOUBLE QUEEN**

SHEET NUMBER

A-6.13

5901 PEACHTREE DUNWOODY RD.
BUILDING A, SUITE 450
ATLANTA, GEORGIA 30328
PHILLIPSPART.COM 770.394.1616

- GENERAL NOTES
- LOCATE VISUAL ALARMS IN THE GUEST AND TOILETS ROOMS @ 80" TO 96" A.F.F. ENSURE THAT THE VISUAL ALARM MEETS THE NFPA REQUIREMENTS.
 - SMOKE DETECTORS & OTHER EMERGENCY DEVICES TO BE LOCATED PER LOCAL CODE.
 - PROVIDE EMERGENCY LIGHTER PER LOCAL CODE.
 - REFER TO HILTON GARDEN INN STANDARDS MANUAL FOR ADDITIONAL GUESTROOM & GUESTROOM BATH.
 - WALL MOUNTED EQUIPMENT, FIXTURES, ETC. @ 72" & 80" A.F.F. SHALL NOT PROTRUDE FURTHER THAN 4" FROM WALL PER ACCESSIBILITY STANDARDS. SEE HDG FOR FURTHER REQS.
 - IN ACCESSIBLE ROOMS ALL CONTROLS FOR USE BY GUESTS, I.E. DOOR LATCHES & THERMOSTATS, MUST BE MOUNTED AT 8" TO 15" A.F.F. & PROVIDE A 30"x48" CLEAR FLOOR AREA IN COMPLIANCE WITH ACCESSIBILITY STANDARDS. OPERABLE CONTROLS LOCATED OVER AN OBSTRUCTION DEEPER THAN 10" MUST BE MOUNTED NO HIGHER THAN 48" A.F.F. ACCESSIBLE CONTROLS MUST NOT REQUIRE TIGHT GRASPING, PINCHING OR TWISTING OF THE WRIST, & SHALL COMPLY W/ THE HDG.
 - IN ACCESSIBLE ROOMS, @ LEAST ONE OUTLET CONNECTION FOR USED BY GUEST MUST BE MOUNTED @ 15" & 48" A.F.F. & PROVIDE A CLEAR FLOOR AREA IN COMPLIANCE W/ ACCESSIBLE STANDARDS. SEE HDG FOR FURTHER REQS.
 - WHEN OPTIONAL WIRED CONNECTION IS ALSO PROVIDED ANOTHER CAT5-RJ45 CABLE TERMINATED ON AN 8-PIN RJ45 FEMALE JACK MUST BE PROVIDED ON THE WALL BELOW THE DESKWORK AREA. MAINTAIN 6" CLEARANCE FROM ALL OTHER OUTLETS AND DEVICES. A PATCH CORD SHOULD BE PROVIDED AT THE DESKTOP FOR GUEST CONVENIENCE.
 - WHEN OPTIONAL WIRED CONNECTION IS ALSO PROVIDED ANOTHER CAT5-RJ45 CABLE TERMINATED ON AN 8-PIN RJ45 FEMALE JACK MUST BE PROVIDED ON THE WALL BELOW THE DESKWORK AREA. MAINTAIN 6" CLEARANCE FROM ALL OTHER OUTLETS AND DEVICES. A PATCH CORD SHOULD BE PROVIDED AT THE DESKTOP FOR GUEST CONVENIENCE.
 - PAINT IN HUMIDITY AREA SUCH AS GUEST ROOM BATHROOMS, POOL & POOL RESTROOMS, OBTAINABLE & HAVE MILDEW RESISTANT FINISH.
 - OVERALL PLANS INDICATE LOCATIONS OF CONNECTING ROOMS.

- KEY NOTES - PROTOTYPE DOCS.
- PTAC UNIT - TO BE HARD WIRED TO ELECTRICAL SYSTEM
 - FRAMING CONTRACOR TO PROVIDE 3/4" F.R.T. PLYWOOD BLOCKING TO RECEIVE ITEM INDICATED - EXTEND FULL LENGTH OF OBJECT
 - SINGLE OR DUAL LIGHT SWITCH REFER TO HILTON GARDEN INN STANDARDS MANUAL
 - REFER TO TOILET ACCESSORIES SHEET FOR MOUNTING HEIGHT
 - FLAT SCREEN TV LOCATION
 - FLOOR DRAIN
 - PREMANUFACTURED SHOER PAN
 - EDGE OF PTAC SKIRT
 - LOCATION OF DOOR FOR CONNECTING ROOMS - REFER TO OVERALL PLANS FOR LOCATIONS
 - PROVIDE DOORBELL ON/OFF SWITCH (C.F. ROOMS ONLY) W/ SIGNAGE
 - MICROWAVE LOCATION
 - DOORBELL (C.F. ROOMS ONLY) SIGNAGE AS REQ'D; 48" AFF MAX
 - STARTING POINT OF TILE, BEGIN WITH TILE
 - REMOTE THERMOSTAT
 - DRAPERY VALANCE ANCHORED TO WALL CEILING - WALL MOUNT ON LEFT
 - FIRE HORN IN STANDARD ROOM - FIRE HORN STROBE IN C.F. ROOMS ONLY
 - DOORBELL HOUSING REFER TO DOOR SCHEDULE SHEET FOR MOUNTING HEIGHT
 - RECESSED CEILING LIGHT FOR DAMP LOCATIONS WITH SHUTTERED LENS
 - TOILET ELECTRIC FLE - REFER TO ENLARGED BATHRM. PLANS
 - UNDER COUNTER ACCESSIBLE REFRIGERATOR LOCATION
 - ITCHES CONTROLONG MECHANICAL SHADES IN ACCESSIBLE ROOMS - REFER TO HDG. FOR ACCESSIBLE CONTROL REQUIREMENTS - COORDINATE WITH WINDOW TREATMENT FABRICATOR
 - FLOOR TILE AND BASE TRIM EDGE TO ALIGN WITH CEILING ABOVE
 - ADDITIONAL HORN STROBE LOCATED IN C.F. BATHROOMS ONLY
 - PROVIDE SEPARATE SWITCHING FOR EXHAUST FAN
 - LIGHT SWITCH WITH INTEGRATED NIGHT LIGHT
 - SHOWER DOOR
 - COORDINATE WIRELESS ACCESS POINT LOCATION WITH CASEGOODS TO AVOID CONFLICT
 - PROVIDE (1) CAT5-RJ45 CABLE IN EVERY GUEST ROOM ON THE WALL BELOW THE DESKWORK AREA TERMINATED ON AN 8-PIN RJ45 FEMALE JACK FOR WIRELESS ACCESS POINT INFRASTRUCTURE (LINE POWERE WAP)
 - ROOM SIGNAGE
 - EACH CABLE RUN MUST BE HOMERUN BETWEEN THE GUESTROOM AND THE IDF ON EACH FLOOR
 - COFFE SERVICE LOCATION
 - SHOWER / TUB MIX TO FOLLOW STANDARDS

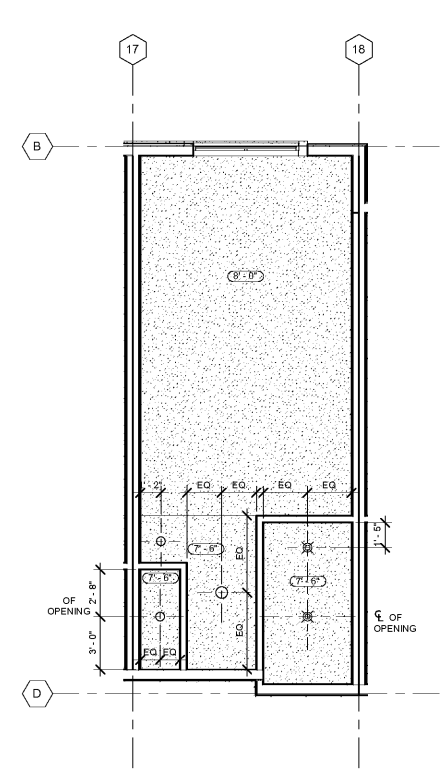
POWER AND SIGNAL LEGEND:

PLAN:	ELEV:
	POWER OUTLET
	QUAD OUTLET
	GFCI OUTLET
	DATA OUTLET
	VOICE OUTLET
	CCTV OUTLET
	SMOKE DETECTOR
	STROBE (IN C.F. ROOMS ONLY)
	FIRE HORN (IN NON - C.F. ROOMS)
	FIRE HORN/STROBE (IN C.F. ROOMS ONLY)
	SIDE WALL SPRINKLER HEAD
	WALL MOUNTED WIRELESS THERMOSTAT
	JUNCTION BOX
	DOORBELL LIGHT (C.F. ROOMS ONLY)
	ELECTRICAL SWITCH
	SPRINKLER HEAD
	WALL MOUNTED WIRELESS ACCESS POINT
	CEILING MOUNTED WIRELESS ACCESS POINT
	MINI - MULTIMEDIA HUB
	(1X2) 110V POWER OUTLETS
	(1) USB CHARGING PORT
	"FFA" IF NOTED - THIS IS PROVIDED BY FURNITURE VENDOR

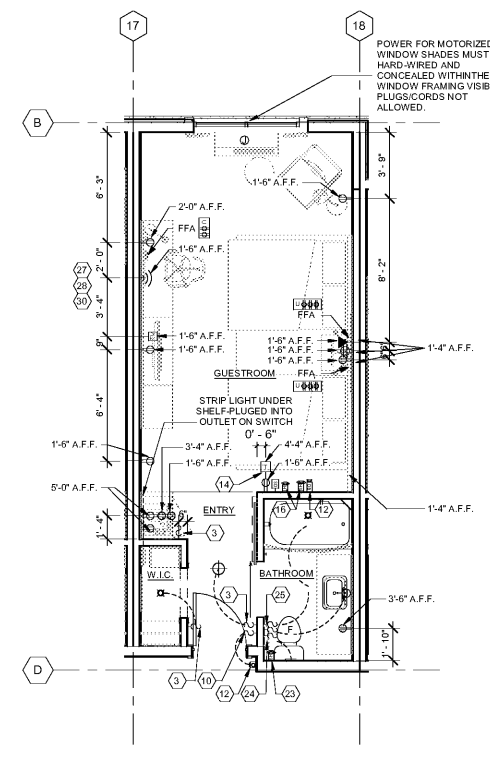
RCP LEGEND: SYMBOLS ARE NOT TO SCALE

	(D-1) DECORATIVE WALL SOCK - REFER TO FREE PCK. FIXTURE TO PROTRUDE MAX. 4" FROM WALL.
	(D-2) DECORATIVE ROUND SUSPENDED LIGHT FIXTURE - REFER TO FREE PACKAGE
	(D-3) DECORATIVE SQUARE SURFACE MOUNT LIGHT FIXTURE. REFER TO FREE PACKAGE
	(D-4) DECORATIVE WALL SOCK FIXTURE. REFER TO FREE PCK. FIXTURE TO PROTRUDE MAX. 4" FROM WALL.
	(R-1): RECESSED DOWNLIGHT
	(R-2): RECESSED WALL WASH
	(R-3): RECESSED DOWNLIGHT W/ LENS (FLUORESCENT LAMP) - UL WET LABELED
	(R-4) SMALL RECESSED DOWNLIGHT (HALOGEN LAMP) NARROW BEAM SPREAD
	(R-6) SURFACE MOUNTED FIXTURE
	(R-8) DECORATIVE PENDANT (UL WET LAB. AT EXT.)
	(C-1): RECESSED FLUORESCENT COVE FIXTURE - 4FT
	(W-1) WALL MOUNTED STRIP LIGHT - 4FT

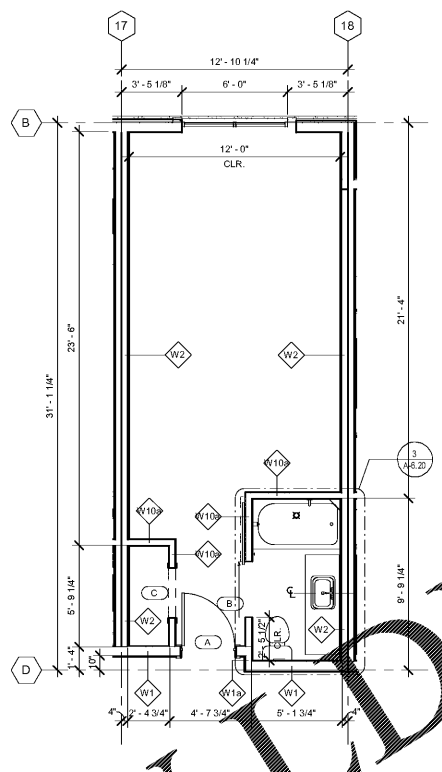
REFER TO ELECTRICAL & INTERIOR DESIGN DOCUMENTS FOR ADDITIONAL LIGHTING INFORMATION



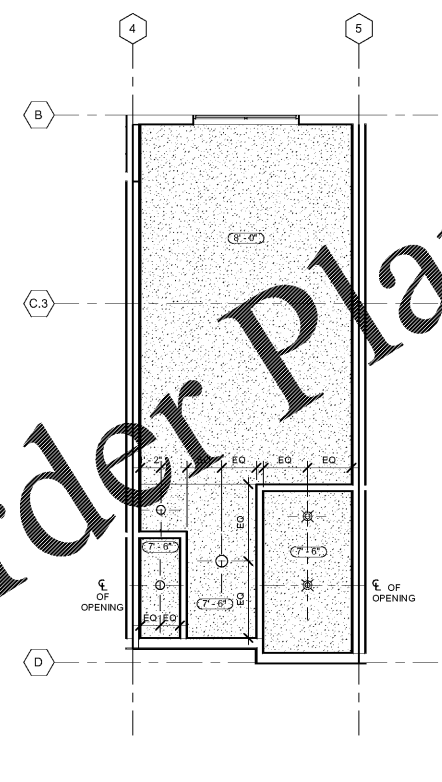
5 "B2" DOUBLE QUEEN with TUB - RCP
SCALE: 1/4" = 1'-0"



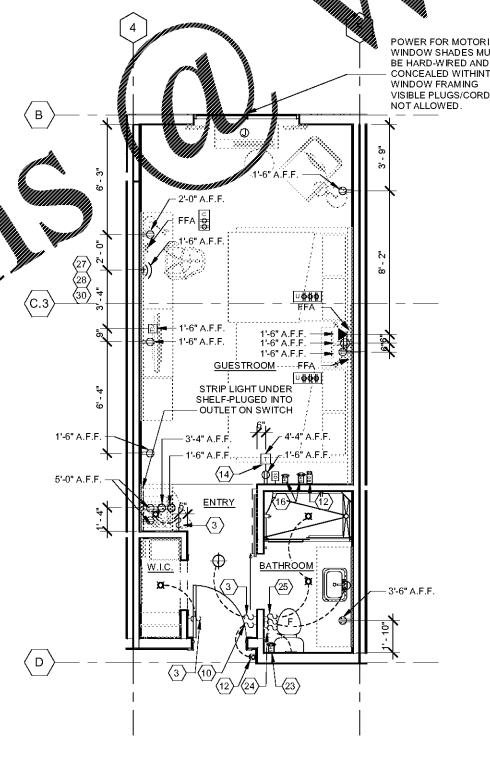
5 "B2" DOUBLE QUEEN with TUB - ELECTRICAL PLAN
SCALE: 1/4" = 1'-0"



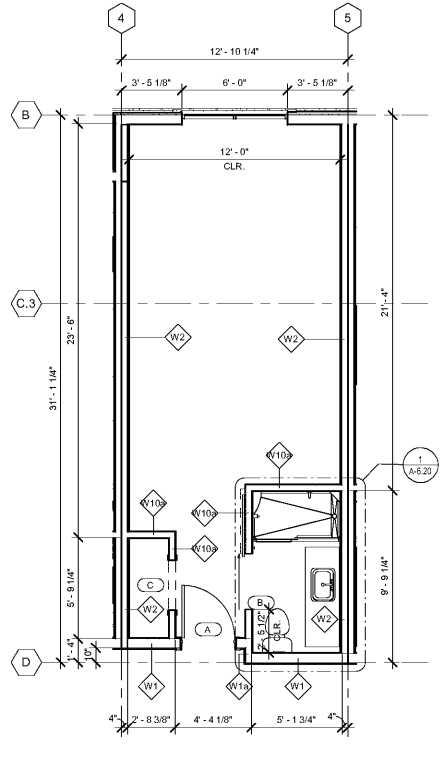
4 "B2" DOUBLE QUEEN with TUB - FLOOR PLAN
SCALE: 1/4" = 1'-0"



3 "B" DOUBLE QUEEN - RCP
SCALE: 1/4" = 1'-0"



2 "B" DOUBLE QUEEN - ELECTRICAL PLAN
SCALE: 1/4" = 1'-0"



1 "B" DOUBLE QUEEN - FLOOR PLAN
SCALE: 1/4" = 1'-0"

Order Plans @ WWW.LDILLINE.COM