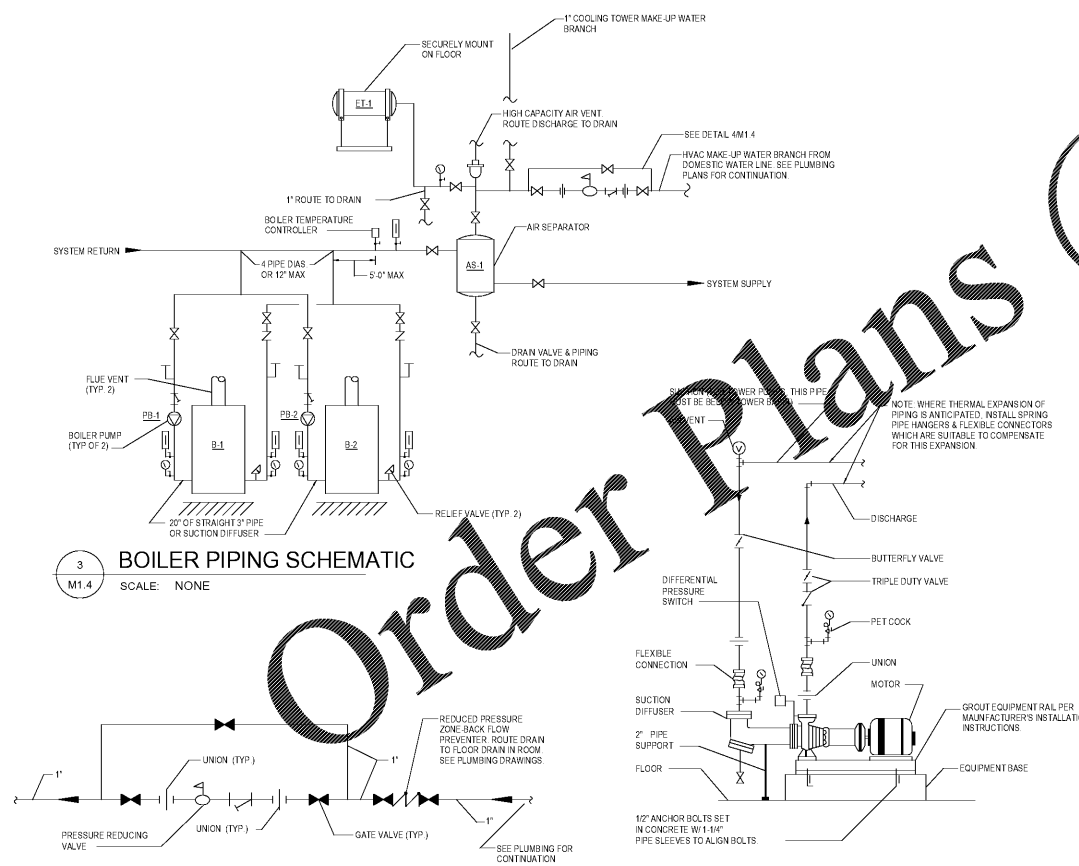


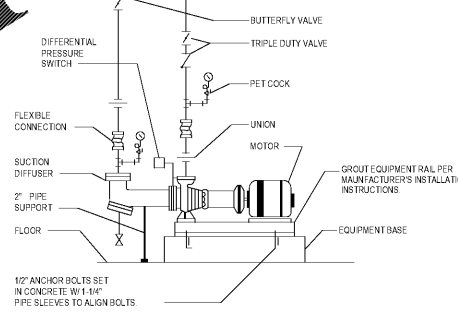
2 M1.4 HVAC - NEW FLOOR PLAN - MECH ROOM ENLARGED PLAN
1/4" = 1'-0"



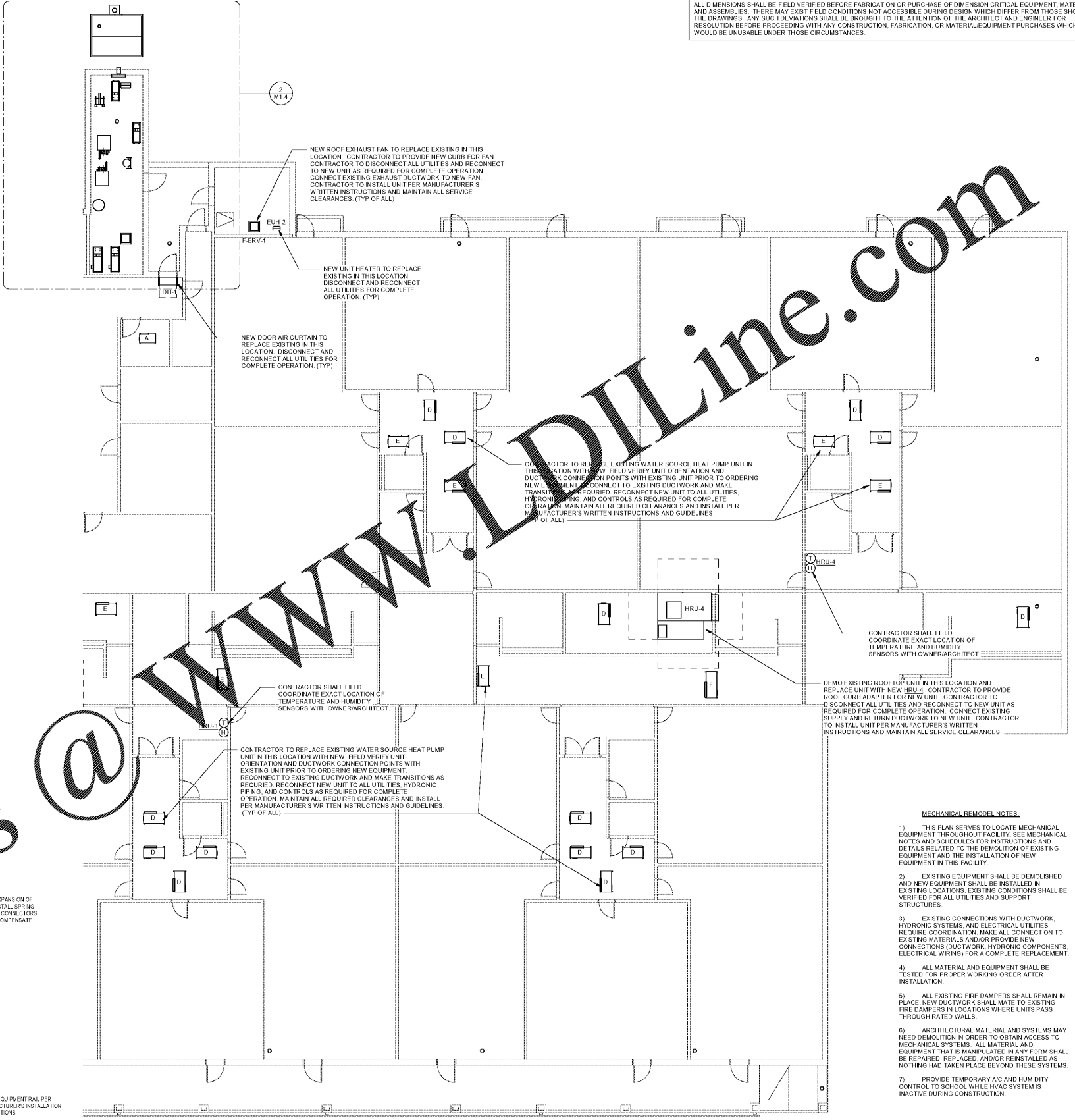
3 M1.4 BOILER PIPING SCHEMATIC
SCALE: NONE



4 M1.4 MAKE-UP WATER PIPING DETAIL
SCALE: NONE



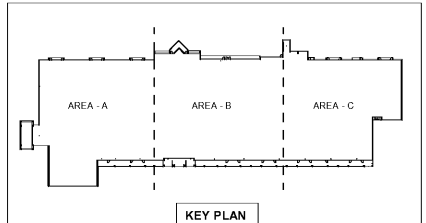
5 M1.4 END SUCTION PUMP DETAIL
SCALE: NONE



1 M1.4 HVAC - NEW FLOOR PLAN - AREA C
1/8" = 1'-0"

DUCTWORK/EQUIPMENT LEGEND

DASHED LINES INDICATE EXISTING HVAC EQUIPMENT, DIFFUSERS AND DUCTWORK TO BE DEMOLISHED.
LIGHT TONE LINES INDICATE EXISTING HVAC EQUIPMENT, DIFFUSERS AND DUCTWORK TO REMAIN/RELOCATE AND REUSED.
DARK TONE LINES INDICATE NEW HVAC EQUIPMENT, DIFFUSERS AND DUCTWORK TO BE INSTALLED.



NOTE: PORTIONS OF THIS PROJECT ARE RENOVATIONS OF AN EXISTING FACILITY AND OF NECESSITY, PREVIOUS RECORD DRAWINGS FORM THE BASIS FOR MANY OF THESE DRAWINGS. IT IS THEREFORE EVEN MORE IMPORTANT THAN IN NEW CONSTRUCTION THAT ALL DIMENSIONS SHALL BE FIELD VERIFIED BEFORE FABRICATION OR PURCHASE OF DIMENSION CRITICAL EQUIPMENT, MATERIALS, AND ASSEMBLIES. THERE MAY EXIST FIELD CONDITIONS NOT ACCESSIBLE DURING DESIGN WHICH DIFFER FROM THOSE SHOWN ON THE DRAWINGS. ANY SUCH DEVIATIONS SHALL BE BROUGHT TO THE ATTENTION OF THE ARCHITECT AND ENGINEER FOR RESOLUTION BEFORE PROCEEDING WITH ANY CONSTRUCTION, FABRICATION, OR MATERIAL/EQUIPMENT PURCHASES WHICH WOULD BE UNUSABLE UNDER THOSE CIRCUMSTANCES.

ROBERTSON LOIA ROOF ARCHITECTS & ENGINEERS
3460 Preston Ridge Road, Suite 275, Alpharetta, GA, 30005
770.674.2600 / www.rlrc.com



(Facility No. 012-0199)
Blacks Mill Elementary School HVAC Replacement and Reroof
Dawsonville, Georgia 30534
Dawson County Schools
Overall Renovation Square Footage = 77,219 SF (Existing)
10,948 (Existing)

REVISIONS

DATE: 12-06-2019
PROJECT NUMBER: 19-309
SHEET NUMBER: M1.4