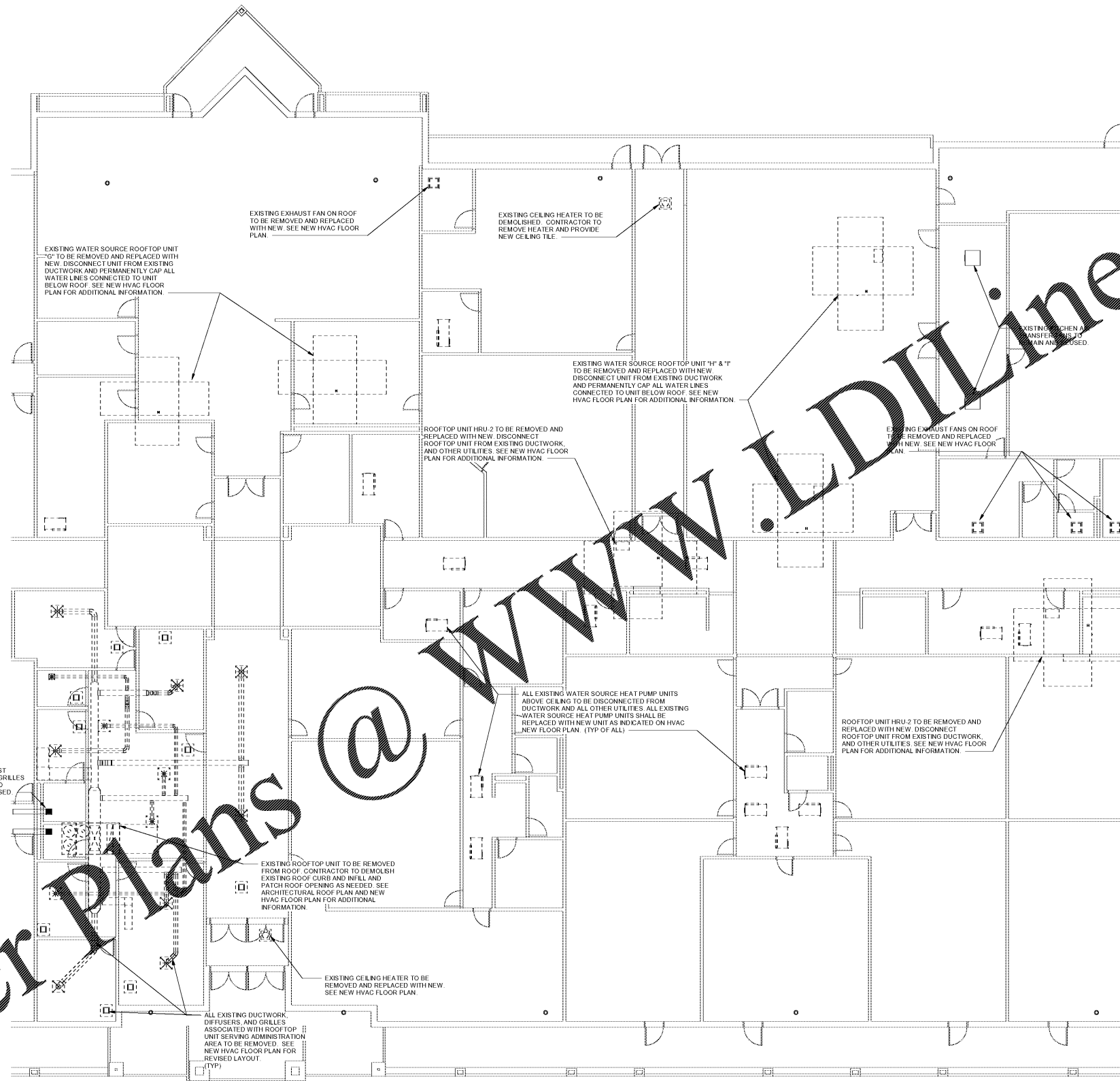


NOTE:
 PORTIONS OF THIS PROJECT ARE RENOVATIONS OF AN EXISTING FACILITY AND OF NECESSITY, PREVIOUS RECORD DRAWINGS FORM THE BASIS FOR MANY OF THESE DRAWINGS. IT IS THEREFORE EVEN MORE IMPORTANT THAN IN NEW CONSTRUCTION THAT ALL DIMENSIONS SHALL BE FIELD VERIFIED BEFORE FABRICATION OR PURCHASE OF DIMENSION CRITICAL EQUIPMENT MATERIALS, AND ASSEMBLIES. THERE MAY EXIST FIELD CONDITIONS NOT ACCESSIBLE DURING DESIGN WHICH DIFFER FROM THOSE SHOWN ON THE DRAWINGS. ANY SUCH DEVIATIONS SHALL BE BROUGHT TO THE ATTENTION OF THE ARCHITECT AND ENGINEER FOR RESOLUTION BEFORE PROCEEDING WITH ANY CONSTRUCTION, FABRICATION, OR MATERIAL/EQUIPMENT PURCHASES WHICH WOULD BE UNUSABLE UNDER THOSE CIRCUMSTANCES.

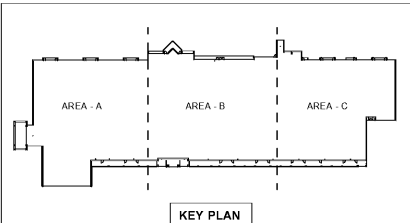


MECHANICAL REMODEL NOTES:

- 1) THIS PLAN SERVES TO LOCATE MECHANICAL EQUIPMENT THROUGHOUT FACILITY. SEE MECHANICAL NOTES AND SCHEDULES FOR INSTRUCTIONS AND DETAILS RELATED TO THE DEMOLITION OF EXISTING EQUIPMENT AND THE INSTALLATION OF NEW EQUIPMENT IN THIS FACILITY.
- 2) EXISTING EQUIPMENT SHALL BE DEMOLISHED AND NEW EQUIPMENT SHALL BE INSTALLED IN EXISTING LOCATIONS. EXISTING CONDITIONS SHALL BE VERIFIED FOR ALL UTILITIES AND SUPPORT STRUCTURES.
- 3) EXISTING CONNECTIONS WITH DUCTWORK, HYDRONIC SYSTEMS, AND ELECTRICAL UTILITIES REQUIRE COORDINATION. MAKE ALL CONNECTION TO EXISTING MATERIALS AND/OR PROVIDE NEW CONNECTIONS (DUCTWORK, HYDRONIC COMPONENTS, ELECTRICAL WIRING) FOR A COMPLETE REPLACEMENT.
- 4) ALL MATERIAL AND EQUIPMENT SHALL BE TESTED FOR PROPER WORKING ORDER AFTER INSTALLATION.
- 5) ALL EXISTING FIRE DAMPERS SHALL REMAIN IN PLACE. NEW DUCTWORK SHALL MATE TO EXISTING FIRE DAMPERS IN LOCATIONS WHERE UNITS PASS THROUGH RATED WALLS.
- 6) ARCHITECTURAL MATERIAL AND SYSTEMS MAY NEED DEMOLITION IN ORDER TO OBTAIN ACCESS TO MECHANICAL SYSTEMS. ALL MATERIAL AND EQUIPMENT THAT IS MANIPULATED IN ANY FORM SHALL BE REPAIRED, REPLACED, AND/OR REINSTALLED AS NOTHING HAD TAKEN PLACE BEYOND THESE SYSTEMS.
- 7) PROVIDE TEMPORARY A/C AND HUMIDITY CONTROL TO SCHOOL WHILE HVAC SYSTEM IS INACTIVE DURING CONSTRUCTION.

DUCTWORK/EQUIPMENT LEGEND

	DASHED LINES INDICATE EXISTING HVAC EQUIPMENT, DIFFUSERS AND DUCTWORK TO BE DEMOLISHED.
	LIGHT TONE LINES INDICATE EXISTING HVAC EQUIPMENT, DIFFUSERS AND DUCTWORK TO REMAIN/RELOCATE AND REUSED.
	DARK TONE LINES INDICATE NEW HVAC EQUIPMENT, DIFFUSERS AND DUCTWORK TO BE INSTALLED.



1 MD3 HVAC - DEMOLITION FLOOR PLAN - AREA B
 1/8" = 1'-0"

Order Plans @

WWW.LDILINE.COM

ROBERTSON LOIA ROOF ARCHITECTS & ENGINEERS
 3460 Preston Ridge Road, Suite 275, Alpharetta, GA 30005
 770.674.2600 / www.rlraec.com



(Facility No. 042-0199)

Blacks Mill Elementary School
HVAC Replacement and Reroof
 Dawsonville, Georgia 30534
Dawson County Schools
 Overall Renovation Square Footage = 77,219 SF (Existing)
 10,948 (Existing)

REVISIONS

NO.	DESCRIPTION

HVAC - DEMOLITION FLOOR PLAN - AREA B

DATE: 12-06-2019

PROJECT NUMBER: 19-309

SHEET NUMBER: MD3