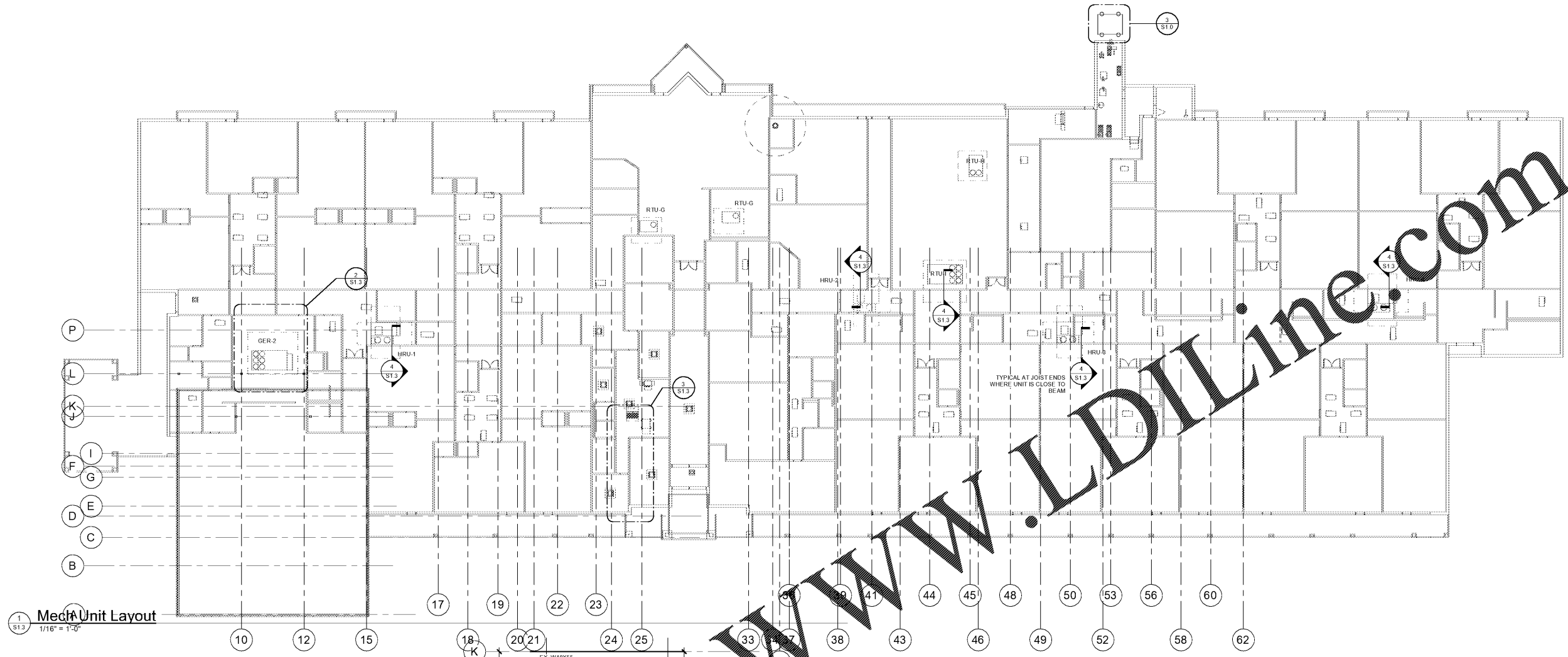
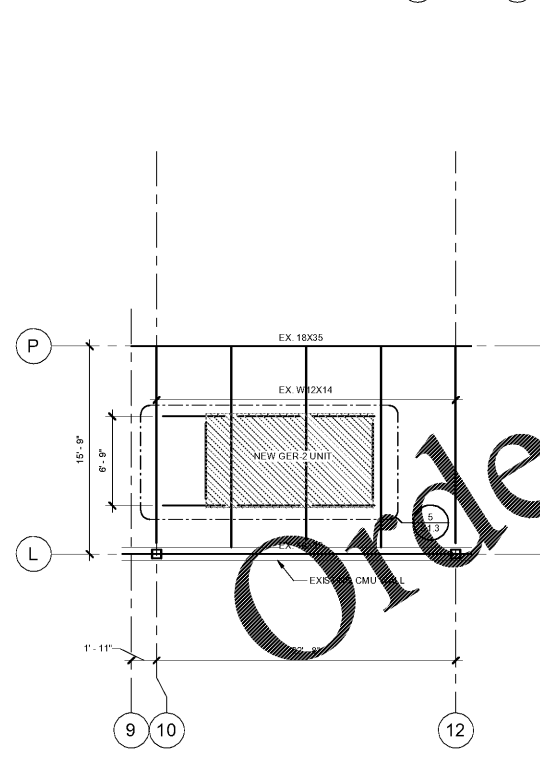


REVISIONS

DATE	12-06-2019
PROJECT NUMBER	19-309
SHEET NUMBER	S1.3

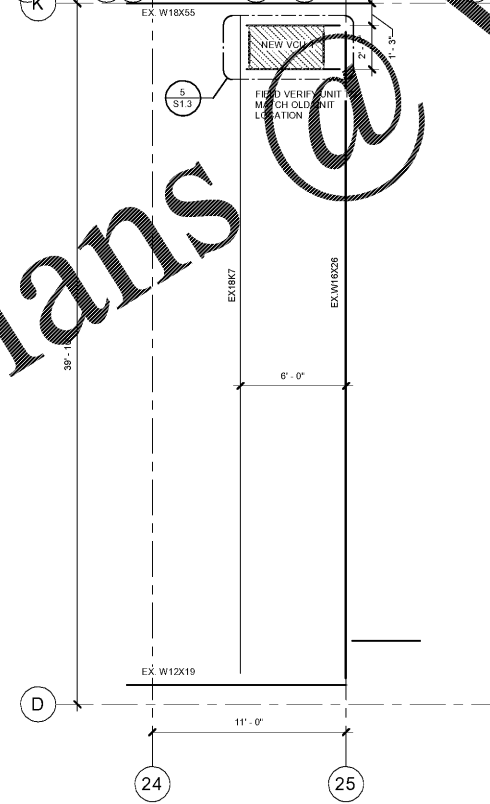


**1** Mech Unit Layout  
 1/16" = 1'-0"



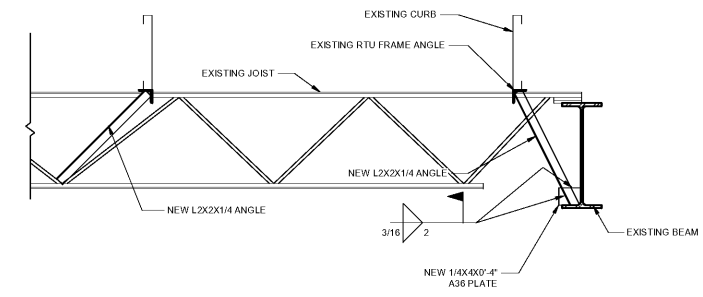
**2** GER-2 PLAN VIEW  
 3/16" = 1'-0"

NOTE:  
 1. SEE S1.0 METAL DECKING FOR DECK INFILL  
 2. FIELD VERIFY ALL DIMENSIONS AND BEAM SIZES



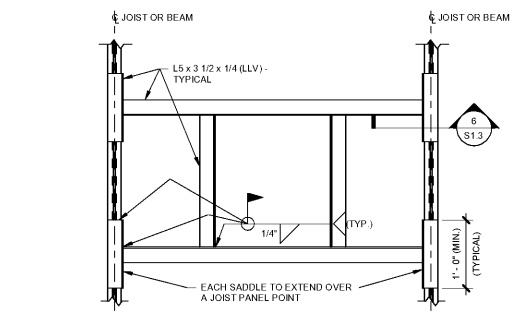
**3** VCU-1 PLAN VIEW  
 1/4" = 1'-0"

NOTE:  
 1. SEE S1.0 METAL DECKING FOR DECK INFILL  
 2. FIELD VERIFY ALL DIMENSIONS AND BEAM SIZES



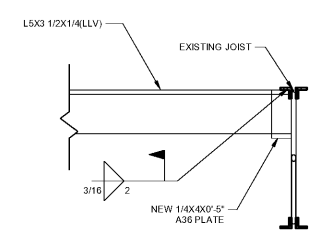
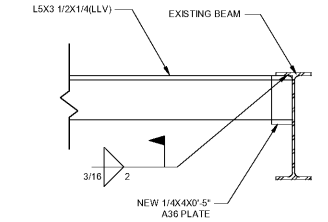
**4** JOIST END REINFORCING DETAIL  
 3/4" = 1'-0"

NOTE: PROVIDE ANGLE AT EACH JOIST THAT SUPPORTS THE RTU FRAMING ANGLES, TYPICALLY (3) JOISTS AT EACH UNIT



**5** TYP. UNIT FRAMING DETAIL  
 3/4" = 1'-0"

NOTE:  
 1. CONTRACTOR SHALL COORDINATE LOCATION & SIZE OF ALL ROOF OPENINGS WITH EQUIPMENT SELECTED  
 2. REQUIRED FOR ALL MECHANICAL EQUIPMENT BUT NOT LIMITED TO RTU's, EXHAUST FANS AND MAKE UP AIR FANS.



**6** ANGLE FRAME SECTION  
 1 1/2" = 1'-0"

NOTE: ROOF DECK NOT SHOWN FOR CLARIFICATION

www.LDILine.com

Order Plans @