



DAVID L. HOLLOWAY & ASSOCIATES  
ARCHITECT  
1885 WINDCREST DRIVE LILBURN, GA. 6781 808-8854

NO.	REVISION	BY
1		DLH

MEDICAL OFFICE LEASE SPACE BUILDING  
FOR  
CRESCENT MEDICAL CENTRE, LLC  
AT  
CRESCENT MEDICAL CENTER  
1404 MONTREAL ROAD  
TUCKER, GEORGIA

RELEASED FOR CONSTRUCTION

DRAWN: DLH CHECKED: DLH  
DATE: \_\_\_\_\_  
SCALE: AS NOTED  
JOB NO.: \_\_\_\_\_  
SHEET  
**E2**  
JANUARY 21, 2010

**ELECTRICAL NOTES**

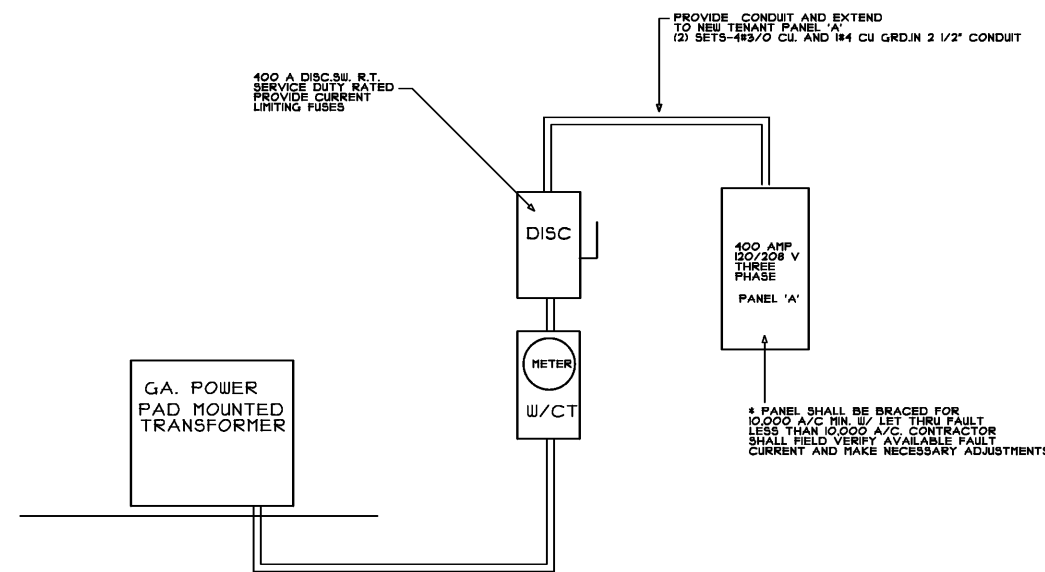
- PENDANT LIGHTING FIXTURES SHALL BE SELECTED BY TENANT AND INSTALLED BY CONTRACTOR. LED LAMPS ARE RECOMMENDED.
- ALL RECEPTACLES W/ COVERS AND SWITCHES W/ COVERS SHALL BE (WHITE) IN COLOR.
- ALL ELECTRICAL WORK SHALL BE PERFORMED BY A STATE OF GEORGIA LICENSED COMMERCIAL ELECTRICAL CONTRACTOR.
- ALL WIRING AND EQUIPMENT INSTALLED SHALL BE COMPLETELY TESTED AND LEFT IN PERFECT WORKING ORDER.
- TYPEWRITTEN OR PRINTED DIRECTORIES WILL BE INSTALLED IN PANELBOARD INDICATING FINAL CIRCUITS AND BREAKERS.
- RECEPTACLES AND SWITHES ARE TO BE 20 AMP, 120 VOLT SPECIFICATIONS GRADE.
- ALL LED GENERAL LIGHTING SWITCHES TO BE DIMMER TYPE.

**LIGHTING FIXTURE SCHEDULE**

- A. FLAY-IN 2x4 LED PANEL FIXTURE W/PRISMATIC LENS, 41W, LITHONIA LIGHTING MODEL 2AL2 5000 LM MVOLT DIM, DIMABLE
- B. SUSPENDED LED STRIP FIXTURE
- C. FLAY-IN 2x2 LED PANEL FIXTURE W/ PRISMATIC LENS, 19W, LITHONIA LIGHTING
- D. LED RECESSED CAN DOWNLIGHT
- E. EXIT DIRECTIONAL SIGN W/ BATTERY BACK-UP, LITHONIA LIGHTING #EXR LED EL M4
- EM EXIT SIGN W/ EMERGENCY LAMPS AND BATTERY BACK-UP, LITHONIA LIGHTING # ECR EMERGENCY COMBO UNIT
- EMI EMERGENCY LIGHT (2) HEAD W/ BATTERY BACK-UP, LITHONIA # ELM4L LED SERIES

VOLTAGE 208/120		MAIN: MAIN LUGS ONLY		MOUNTING: FLUSH		PHASE: 3 PHASE-4W					
BUS SIZE 400 AMPS		TOTAL LOAD: 51.6 KVA									
BRANCH CIRCUIT		DEVICE		PHASE LOAD		DEVICE		BRANCH CIRCUIT			
NO.	DESIGNATION	LOAD (KVA)	TRIP	P	A	P	TRIP	LOAD (KVA)	NOTE	DESIGNATION	NO.
1	EXTERIOR LIGHTS	1.1	20	1		1	20	1.2		EXTERIOR LIGHTED SGNS	2
3	GENERAL LIGHTING	2.0	20	1	4.0	1	20	2.0		GENERAL LIGHTING	4
5	GENERAL LIGHTING	2.0	20	1		4.0	20	2.0		GENERAL LIGHTING	6
7	RECEPTACLES	1.7	20	1	3.7	1	20	2.0		GENERAL LIGHTING	8
9	RECEPTACLES	1.5	20	1		3.5	20	2.0		RECEPTACLES	10
11	RECEPTACLES	1.7	20	1		4.1	20	2.4		RECEPTACLES	12
13	RECEPTACLES	1.5	20	1	3.0	1	20	1.5		RECEPTACLES	14
15	STAFF BREAK RM. REFRIGERATOR	0.7	20	1		1.4	20	0.7		LAB REFRIGERATOR	16
17	FAU-1	2.2	20	1		4.4	20	2.2		FAU-2	18
19		3.1	50	2	4.2		50	3.1		AC-2	20
		3.1						3.1			22
21	TOILET RM. RECEPTACLES (GFCD)	1.2	20	1		3.2	20	2.0		STAFF BREAK RM. KITCH. RECEPTACLES	24
25	WATER COOLER	0.7	20		1.4		20	0.7		WATER HEATER (2 AMPS)	26
27	COMPUTER SERVER (8.3 AMPS MAX)	1.0	20		2.1		20	1.1		SPARE (8.2 AMPS MAX)	28
29	SPARE (6.7 AMPS MAX)	0.8	20			1.5	20	0.7		SPARE (5.8 AMPS MAX)	30
31	EMPTY SPACE									EMPTY SPACE	32
33	EMPTY SPACE									EMPTY SPACE	34
35	EMPTY SPACE									EMPTY SPACE	36
37	EMPTY SPACE									EMPTY SPACE	38
39	EMPTY SPACE									EMPTY SPACE	40
41	EMPTY SPACE									EMPTY SPACE	42
		17.2	17.2	17.2			51.6 KVA x 1.25/.360 = 179.17 AMPS				

NOTES:  
1. PANEL IS OVERSIZED FOR CURRENT AMPERAGE NEEDS TO ACCOMMODATE POTENTIAL FUTURE INCREASE.



**SERVICE ENTRANCE SCHEMATIC**  
SCALE: NONE