

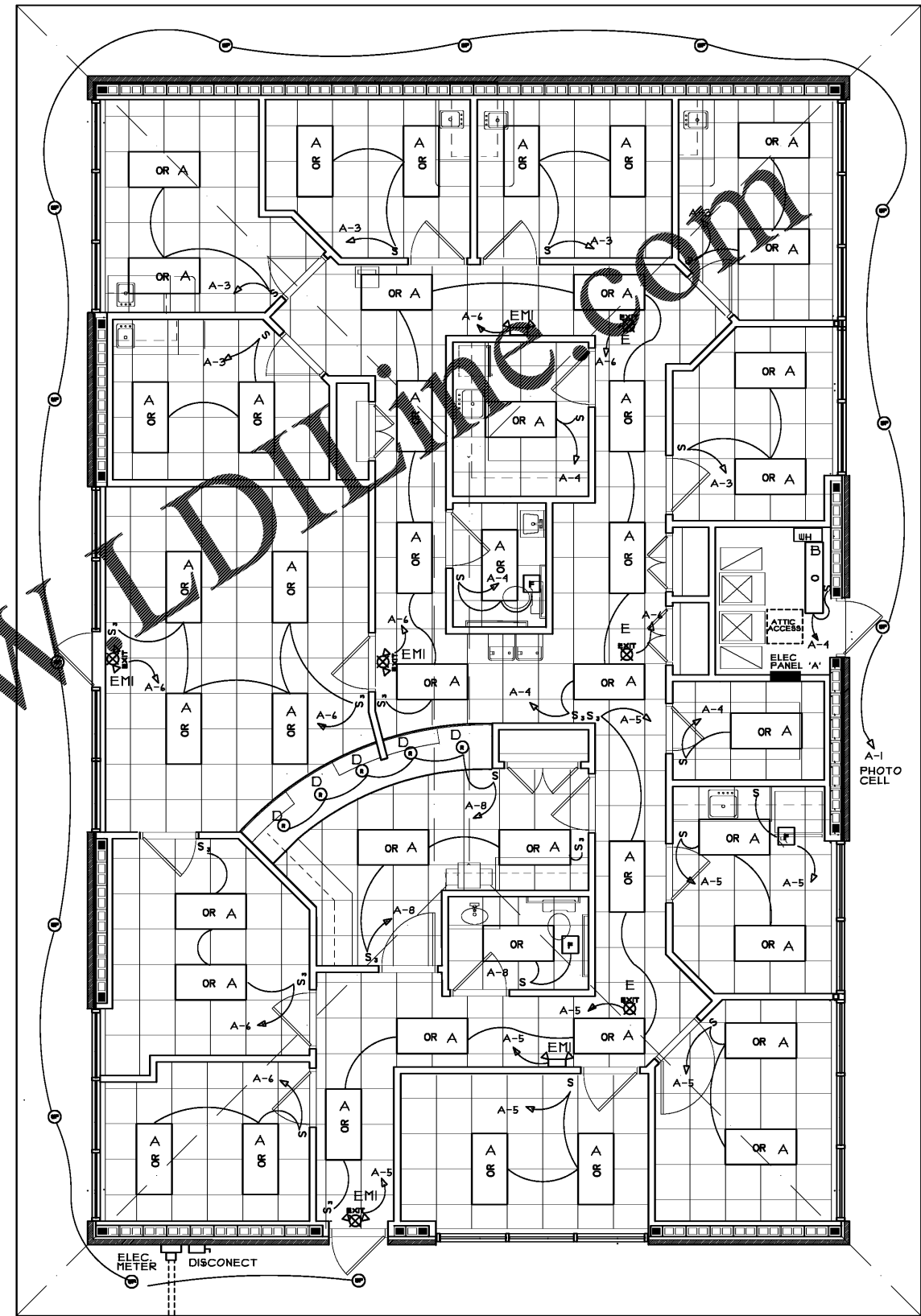
SYMBOL LEGEND

- NEW LED PENDANT FIXTURE
- LED RECESSED LIGHT
- WATERPROOF LED RECESSED LIGHT
- DIRECTIONAL EXIT LIGHT
- EXIT LIGHT W/ EMERGENCY LIGHTING
- EMERGENCY LIGHTING W/ BATTERY BACKUP
- EXHAUST FAN
- FIRE ALARM STROBE AT 80' A.F.F.
- FIRE ALARM PULL AT 44' A.F.F.
- 2'x4' LAY IN RECESSED LED FIXTURE
- 1'x4' SUSPENDED LED STRIP FIXTURE
- 10 V DUPLEX WALL RECEPTACLE
- 10 V SINGLE WALL RECEPTACLE
- COMPUTER DATA WALL PORT
- TELEPHONE OUTLET JACK
- 3 WAY LIGHT SWITCH
- SINGLE POLE LIGHT SWITCH
- FAN/MOTOR
- 200 AMP ELEC. SERVICE PANEL 'A'

UNDGROUNDS SERVICE FROM PAD MOUNTED TRANSFORMER (SEE SITE PLAN)

ELECTRICAL POWER PLAN

SCALE: 1/4" = 1'-0"



UNDGROUNDS SERVICE FROM PAD MOUNTED TRANSFORMER (SEE SITE PLAN)

ELECTRICAL REFLECTED LIGHTING PLAN

SCALE: 1/4" = 1'-0"



DAVID L. HOLLOWAY & ASSOCIATES
ARCHITECT
1883 WINDCREST DRIVE
LILBURN, GA. 30149-8654

NO.	REVISION	BY	DLH
1			

RELEASED FOR CONSTRUCTION

MEDICAL OFFICE LEASE SPACE BUILDING
FOR
CRESCENT MEDICAL CENTRE, LLC
AT
CRESCENT MEDICAL CENTER
1404 MONTREAL ROAD
TUCKER, GEORGIA

DRAWN :	CHECKED :
DLH	DLH
DATE :	
SCALE : AS NOTED	
JOB NO. :	
SHEET	
JANUARY 21, 2020	