

DAVID L. HOLLOWAY & ASSOCIATES
ARCHITECT
1983 WINDCREST DRIVE LILBURN, GA. 30149-0654

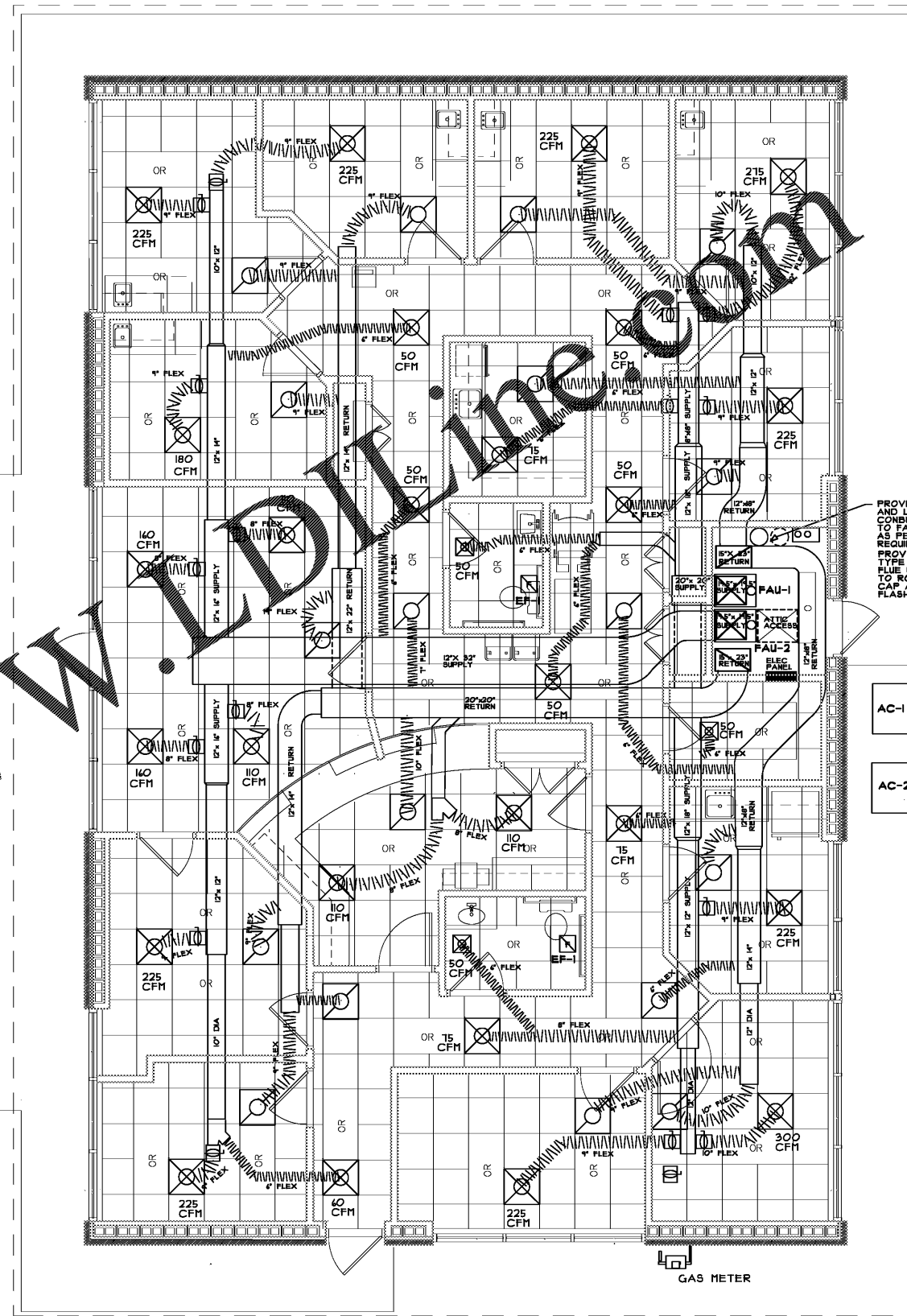
NO.	REVISION	BY	DATE
1		DLH	

MEDICAL OFFICE LEASE SPACE BUILDING
FOR
CRESCENT MEDICAL CENTRE, LLC
AT
CRESCENT MEDICAL CENTER
1404 MONTREAL ROAD
TUCKER, GEORGIA

DRAWN : DLH	CHECKED : DLH
DATE :	
SCALE : AS NOTED	
JOB NO. :	
SHEET	
JANUARY 21, 2020	

HVAC SYMBOLS

- MANUAL DAMPER IN DUCT
- EXHAUST FAN
- SMALL SUPPLY REGISTER
- 2'-0" x 2'-0" LAY-IN CLG SUPPLY REGISTER
- 2'-0" x 2'-0" LAY-IN RETURN AIR GRILLE W/ REMOVABLE/WASHABLE FILTER TITUS 50 FF OR EQUAL
- FLEXIBLE DUCT
- PROGRAMMABLE THERMOSTAT
- MANUALLY ADJUSTABLE IN- DUCT DAMPER



HVAC EQUIPMENT SCHEDULE

- RTU-1 GOODMAN® MODEL # GSX165403, GAS HEAT/ELEC COOLING, 16 SEER, NOMINAL 5 TON COOLING, 208V/3 PH/40, 2 STAGE COOLING, 1400-2000 CFM, 80,000 MAX BTUH INPUT GAS HEATING, 125 LBS, 15 AMP, 3/4 HP BLOWER, 80 AFUE
- RTU-2 GOODMAN® MODEL # GSX165403, GAS HEAT/ELEC COOLING, 16 SEER, NOMINAL 5 TON COOLING, 208V/3 PH/40, 2 STAGE COOLING, 1400-2000 CFM, 80,000 MAX BTUH INPUT GAS HEATING, 125 LBS, 15 AMP, 3/4 HP BLOWER, 80 AFUE
- EF-1 PENN OR BLOAN BATH EXHAUST FAN RATED FOR 15CFM @.25" SP

OUTSIDE AIR CALCULATION

FROM INC TABLE 403.3

SPACE	AREA	NO. PEOPLE	O.A. CFM/PERSON	O.A. CFM/AREA
OFFICE SPACE	492 SQ.FT.	ACTUAL COUNT 7 PEOPLE	7 X 5 CFM = 35 CFM	492 SQ.FT. X .04 CFM = 42 CFM
RECEPTION/WAITING	215 SQ.FT.	ACTUAL COUNT 18 PEOPLE	18 X 5 CFM = 90 CFM	215 SQ.FT. X .04 CFM = 17 CFM
EXAM ROOMS	534 SQ.FT.	534/1000 X 10 = 4 PEOPLE	4 X 25 CFM = 150 CFM	—
CORRIDORS	534 SQ.FT.	—	—	534 SQ.FT. X .04 CFM = 32 CFM
CONFERENCE	238 SQ.FT.	ACTUAL COUNT 10 PEOPLE	10 X 5 CFM = 50 CFM	238 SQ.FT. X .04 CFM = 14 CFM
TOILETS	80 SQ.FT.	—	—	—
			325 CFM	105 CFM

TOTAL OUTSIDE AIR REQUIRED = 430 CFM
SET O.A. DAMPER ON FAU-1 AND FAU-2 FOR 215 CFM MIN.

HVAC REFLECTED PLAN

SCALE: 1/4" = 1'-0"

HVAC DUCT LAYOUT IS SCHEMATIC IN NATURE AND DOES NOT DEPICT ACTUAL BENDS AND TURNS OF DUCTWORK WHICH MAY BE REQUIRED TO ACCOMMODATE SPACE.

Order Plans @ WWW.DLINE.COM

RELEASED FOR CONSTRUCTION