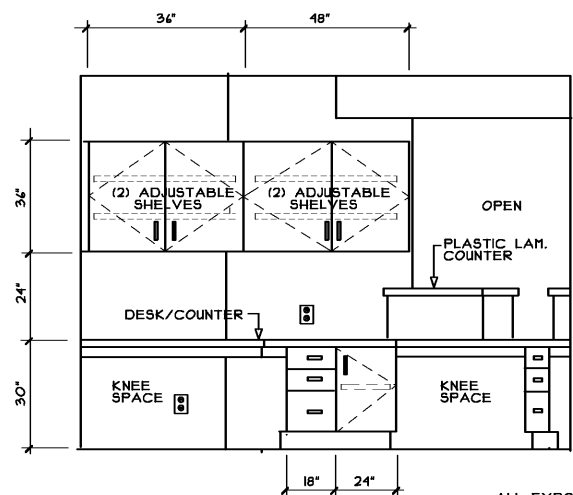
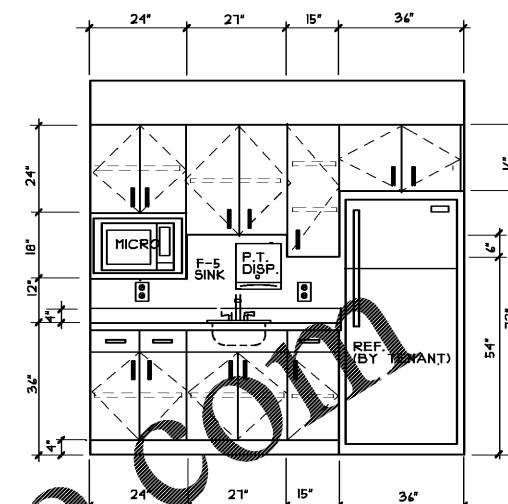
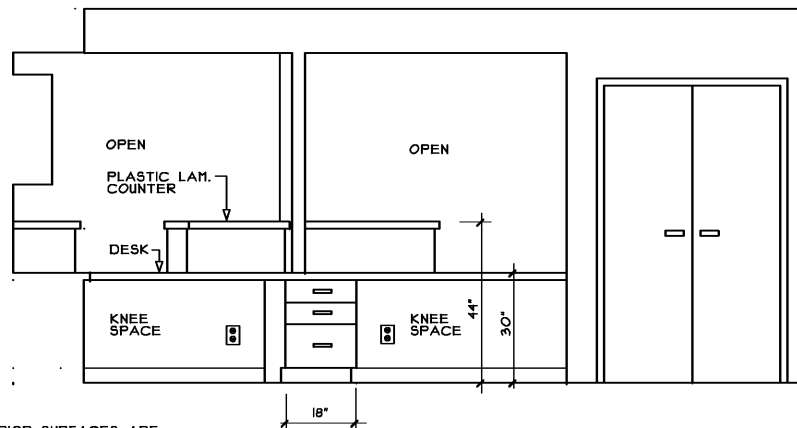


BUSINESS OFFICE 124

SCALE: 1/2" = 1'-0"



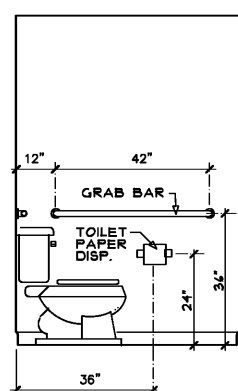
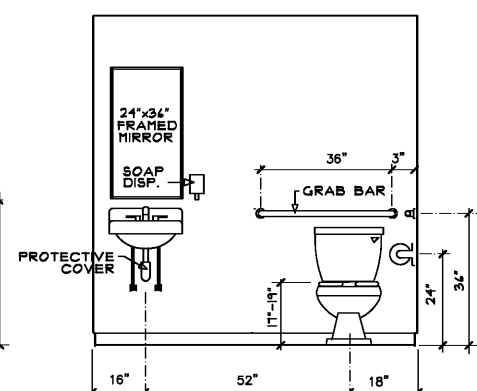
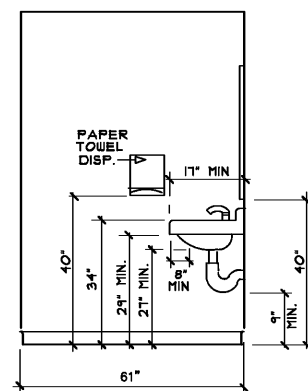
ALL EXPOSED EXTERIOR SURFACES ARE PLASTIC LAM (COLOR SELECTED BY TENANT) WITH WHITE MELAMINE INTERIOR SURFACES



STAFF BREAK ROOM 119

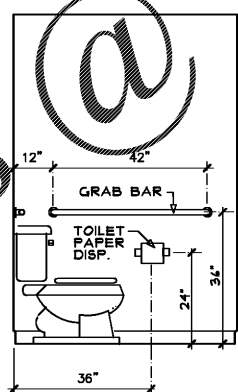
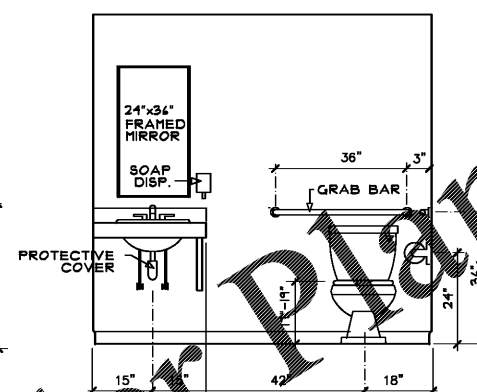
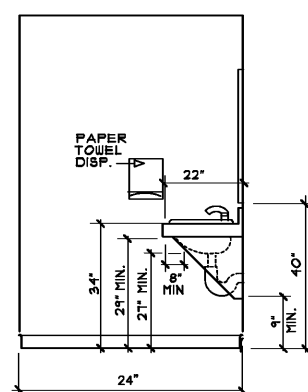
SCALE: 1/2" = 1'-0"

ALL EXPOSED EXTERIOR SURFACES ARE PLASTIC LAM (COLOR SELECTED BY TENANT) WITH WHITE MELAMINE INTERIOR SURFACES



TOILET ROOM 105 FIXTURE ELEVATIONS

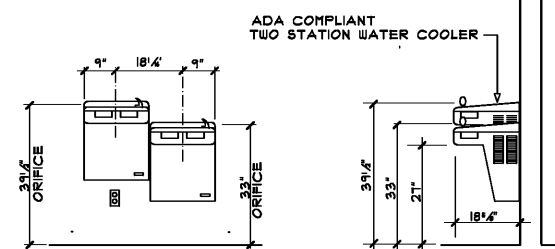
SCALE: 1/2" = 1'-0"



TOILET ROOM 126 FIXTURE ELEVATIONS

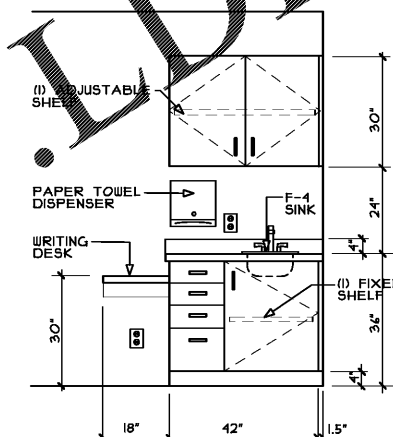
ACCESSIBILITY NOTE

1. FLUSH CONTROLS SHALL BE INSTALLED PER RULE 120-3-20-27 AND SHALL NOT REQUIRE TIGHT GRASPING, PINCHING, OR TWISTING OF THE WRIST. CONTROLS FOR FLUSH VALVES SHALL BE MOUNTED ON THE WIDE SIDE OF THE TOILET, NO MORE THAN 44" A.F.F.
2. EXPOSED HOT WATER AND DRAIN PIPES UNDER LAVATORIES SHALL BE INSULATED OR OTHERWISE CONFIGURED TO PROTECT AGAINST CONTACT.
3. SIGNAGE FOR RESTROOMS SHALL BE RAISED AND BRAILLE CHARACTERS AND PICTORIAL SYMBOL SIGNS. SIGNS SHALL BE INSTALLED ON THE WALL ADJACENT TO THE LATCH SIDE OF THE DOOR. MOUNTING HEIGHT SHALL BE 60" A.F.F. TO THE CENTERLINE OF THE SIGN.
4. MIRRORS SHALL BE INSTALLED A MAXIMUM OF 40" A.F.F. TO THE BOTTOM, AND AT LEAST 14" TO THE TOP.



HI-LO WATER COOLER

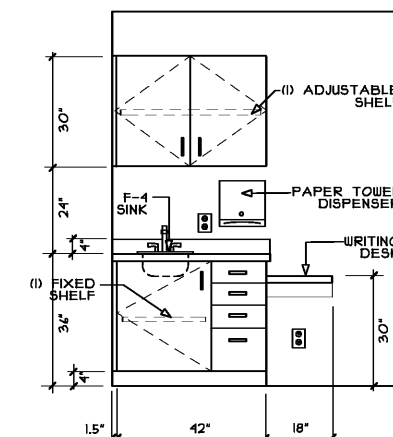
SCALE: 1/2" = 1'-0"



ALL EXPOSED EXTERIOR SURFACES ARE PLASTIC LAM (COLOR SELECTED BY TENANT) WITH WHITE MELAMINE INTERIOR SURFACES

EXAM ROOMS 109 111 112

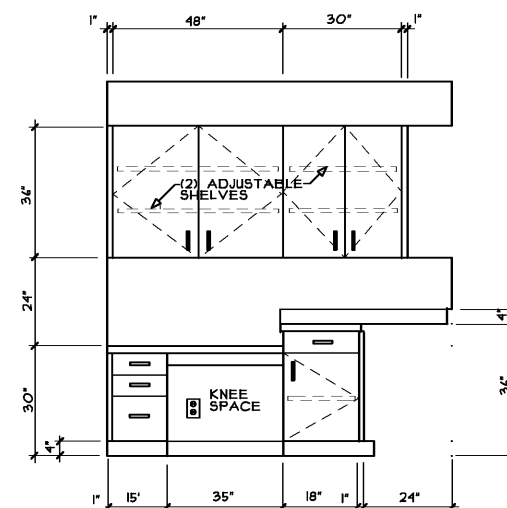
SCALE: 1/2" = 1'-0"



ALL EXPOSED EXTERIOR SURFACES ARE PLASTIC LAM (COLOR SELECTED BY TENANT) WITH WHITE MELAMINE INTERIOR SURFACES

EXAM ROOMS 108 110

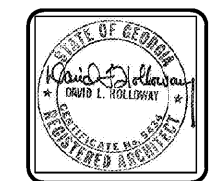
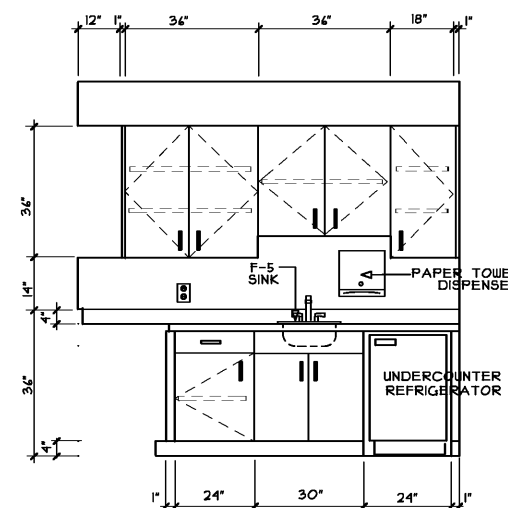
SCALE: 1/2" = 1'-0"



ALL EXPOSED EXTERIOR SURFACES ARE PLASTIC LAM (COLOR SELECTED BY TENANT) WITH WHITE MELAMINE INTERIOR SURFACES

LAB 106

SCALE: 1/2" = 1'-0"



DAVID L. HOLLOWAY & ASSOCIATES ARCHITECT
1983 WINDCREST DRIVE LEBURN, GA. (878) 908-0854

NO.	REVISION	BY	DLH
1			

MEDICAL OFFICE LEASE SPACE BUILDING
FOR
CRESCENT MEDICAL CENTRE, LLC
AT
CRESCENT MEDICAL CENTER
1404 MONTREAL ROAD
TUCKER, GEORGIA

RELEASED FOR CONSTRUCTION

DRAWN : DLH	CHECKED : DLH
DATE :	
SCALE : AS NOTED	
JOB NO. :	
SHEET	
A5	
JANUARY 21, 2020	