

LUMINAIRE SCHEDULE									
TYPE	MANUFACTURER	CATALOG	CCT	LUMEN	VOLTAGE	WATTAGE	DIMMING	MOUNTING	DESCRIPTION
B1	TRACELITE	TLED110P	3000K	3000L	120V	40W	0-10V	WALL	WALL PACK WITH TYPE II LIGHT DISTRIBUTION. WET LOCATION LISTED.
B2	TRACELITE	WLZ	3000K	1700L	120V	15W	0-10V	WALL	ARCHITECTURAL WALL SCONCE WITH TYPE III LIGHT DISTRIBUTION. WET LOCATION LISTED. PROVIDE EMERGENCY BATTERY PACK.
B3	ECLIPSE LTG	DE-TR-P	3000K	2000L	120V	25W	NONE	WALL	38" TALL WALL SCONCE WITH CLEAR ACRYLIC TOP AND BOTTOM LENS. WET LOCATION LISTED.
D1	MAXILUME	H6-LED	3000K	1200L	120V	24W	0-10V	RECESSED	6" LED DOWNLIGHT WITH FLUSH LENS TRIM, DIFFUSE ACRYLIC LENS, AND WIDE LIGHT DISTRIBUTION. WET LOCATION LISTED.
I1	COLUMBIA	CS	3500K	---	120V	64W	NONE	CHAIN HANGERS	4' STRIP LUMINAIRE WITH TWO (2) F3218 LAMPS AND ELECTRONIC BALLASTS.
X1	BEGHELLI	PACO PGI	---	---	120V	8W	---	SURFACE	LED EXIT SIGN/EMERGENCY COMBINATION LIGHT WITH TWO MR16 LED 1.5W LAMPS, NICKEL-CADMIUM BATTERY, AND AUTO-TESTING CAPABILITY. EXIT SIGN SHALL COMPLY WITH NFPA 101 AND SHALL NOT HAVE VISIBLE LEDS. PROVIDE NUMBER OF FACES AND ARROWS AS INDICATED ON THE DRAWINGS.
X2	BEGHELLI	PACO PEH	---	---	120V	3W	---	SURFACE	LED EMERGENCY LIGHT WITH TWO MR16 LED 1.5W LAMPS, NICKEL-CADMIUM BATTERY, AND AUTO-TESTING CAPABILITY.

NOTES:
1. LISTED LUMINAIRES REPRESENT A BASIS OF DESIGN. EQUIVALENT FIXTURES SHALL BE SUBMITTED AS A SUBSTITUTION REQUEST.
2. LUMINAIRE FINISHES SHALL BE PER ARCHITECT.
3. INTERIOR LUMINAIRES SHALL HAVE A MINIMUM CRI OF 80 AND EXTERIOR LUMINAIRES SHALL HAVE A MINIMUM CRI OF 70, UNLESS OTHERWISE INDICATED.
4. COORDINATE MOUNTING ACCESSORIES AND FLANGE WITH CEILING CONSTRUCTION.
5. WHERE LUMINAIRES ARE INDICATED ON THE DRAWINGS AS AN EMERGENCY FIXTURE, PROVIDE EMERGENCY BATTERY PACK.

EQUIPMENT CONNECTION SCHEDULE					
EQUIPMENT	LOCATION	SIZE	VOLTAGE	DISCONNECT	PANELBOARD
RTU-1	ROOF	39.0 MCA	208V/3Ø	BY MFR	SUITE A
RTU-2	ROOF	63.0 MCA	208V/3Ø	BY MFR	SUITE A
RTU-3	ROOF	39.0 MCA	208V/3Ø	BY MFR	SUITE A
RTU-4	ROOF	44.0 MCA	208V/3Ø	BY MFR	SUITE B
RTU-5	ROOF	40.0 MCA	208V/3Ø	BY MFR	SUITE B
EBBH-A	FA ROOM	4.5 MCA	120V/1Ø	BY MFR	HOUSE

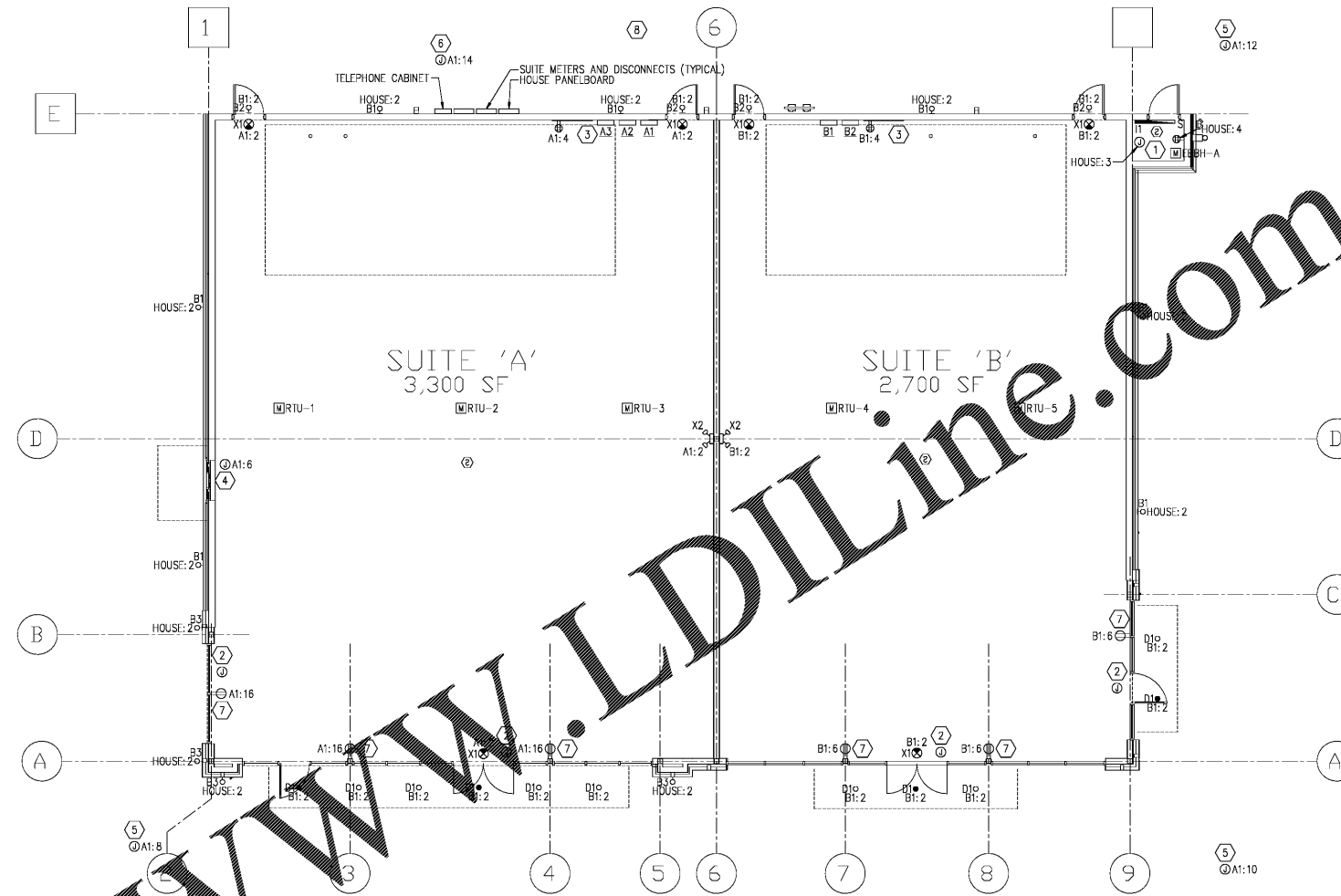
NOTES:
1. DISCONNECT NOMENCLATURE IS AMPERES/POLES/FUSED OR NONFUSED/ENCLOSURE TYPE IF OTHER THAN NEMA 1.
2. SEE ELECTRICAL EQUIPMENT SCHEDULES FOR ADDITIONAL INFORMATION REGARDING ASSOCIATED CIRCUIT BREAKER, CONDUCTORS, RACEWAY, ETC.

GENERAL NOTES

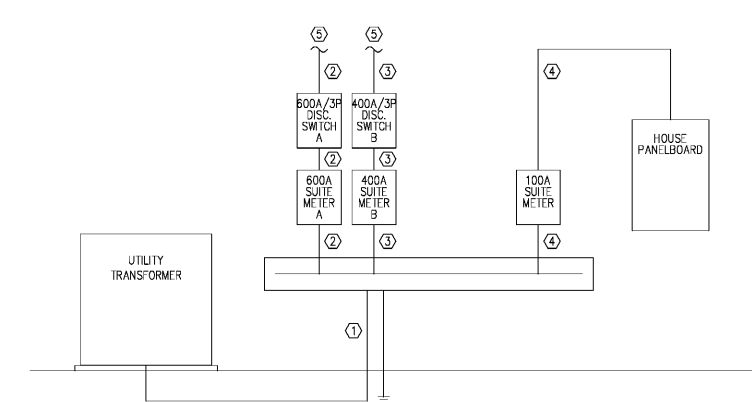
- REFER TO EQUIPMENT CONNECTION SCHEDULE FOR INFORMATION REGARDING MECHANICAL AND PLUMBING EQUIPMENT.
- REFER TO ARCHITECTURAL REFLECTED CEILING PLAN AND ELEVATIONS FOR ADDITIONAL INFORMATION REGARDING LIGHTING, INCLUDING MOUNTING HEIGHTS OF LUMINAIRES.
- EXTERIOR ELECTRICAL EQUIPMENT SHALL BE PAINTED AS INDICATED ON ARCHITECTURAL DRAWINGS. REFER TO ARCHITECTURAL DRAWINGS FOR ADDITIONAL INFORMATION.
- PROVIDE PHOTOCELL MOUNTED ON ROOF FOR EXTERIOR LIGHTING. BRANCH CIRCUIT SERVING EXTERIOR LIGHTING SHALL BE HOMERUN TO PANELBOARD THROUGH PHOTOCELL.

KEY NOTES

- JUNCTION BOX FOR FIRE ALARM CONTROL PANEL. COORDINATE LOCATION AND CONNECTION REQUIREMENTS WITH EQUIPMENT. CIRCUIT BREAKER SHALL MEET NFPA 72 REQUIREMENTS.
- JUNCTION BOX FOR FUTURE TENANT SIGNAGE. COORDINATE FINAL LOCATION ARCHITECT PRIOR TO INSTALLATION.
- PROVIDE AND INSTALL 4' X 8' X 3/4" FIRE RETARDANT WOOD BACKBOARD, PAINTED GRAY, FOR TELEPHONE SERVICE. PROVIDE #6 GROUND TO GROUND BUS IN SUITE PANELBOARD. PROVIDE ONE (1) 2" PVC CONDUIT WITH BULLSTRING TO TELEPHONE CABINET. CAP CONDUIT.
- JUNCTION BOX FOR DRIVE-THRU SYSTEM. COORDINATE LOCATION AND CONNECTION REQUIREMENTS WITH EQUIPMENT.
- JUNCTION BOX FOR DRIVE-THRU SIGNAGE. COORDINATE LOCATION AND CONNECTION REQUIREMENTS WITH EQUIPMENT.
- JUNCTION BOX FOR DRIVE-THRU SIGNAGE. COORDINATE LOCATION AND CONNECTION REQUIREMENTS WITH EQUIPMENT.
- RECEPTACLE SHALL BE MOUNTED ABOVE STOREFRONT. COORDINATE MOUNTING HEIGHT WITH ARCHITECT PRIOR TO INSTALLATION. RECEPTACLE SHALL REMAIN BELOW ANY FUTURE CEILING.
- PROVIDE ALL INFRASTRUCTURE REQUIREMENTS FOR DRIVE-THRU SYSTEM. COORDINATE REQUIREMENTS WITH EQUIPMENT PRIOR TO INSTALLATION. RACEWAYS SHALL BE HOMERUN TO SUITE A AS NECESSARY.



ELECTRICAL FLOOR PLAN
1
E-101 1/8" = 1'-0"



ELECTRICAL RISER DIAGRAM
2
E-101 NO SCALE

RISER KEY NOTES

- 3 SETS OF [4-400kcmil ~ 4°C]
- 2 SETS OF [4-350kcmil, #10 ~ 3°C]
- 2 SETS OF [4#4/0, #30 ~ 2.5°C]
- 4#2, #80 ~ 1.5°C
- TO SUITE PANELBOARD.

THIS DRAWING IS THE PROPERTY OF MANDRISON GROUP, AND IS NOT TO BE REPRODUCED IN WHOLE OR IN PART. IT IS NOT TO BE USED ON ANOTHER PROJECT AND SHALL BE RETURNED UPON REQUEST.



PROJECT TITLE:
BUTLER CREEK RETAIL BUILDING
ACWORTH, GEORGIA

PROJECT INFO:
**3330 COBB PARKWAY NW
ACWORTH, GA 30144**

PRINT RECORD	
Description	Date
PERMIT SET	01/17/2020

REVISION		
No.	Description	Date

ELECTRICAL FLOOR PLAN	
Project number	D19-127
Date	1/17/2020
Drawn by	EKC
Checked by	EKC
E-101	
Scale	AS INDICATED

ISSUED FOR CONSTRUCTION