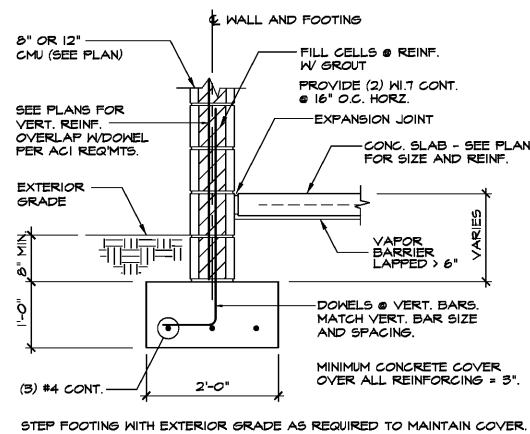
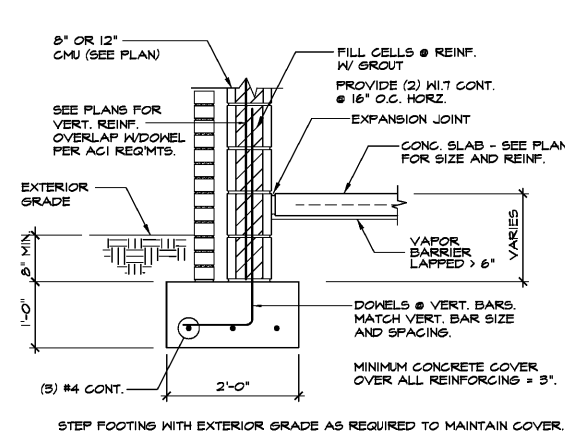


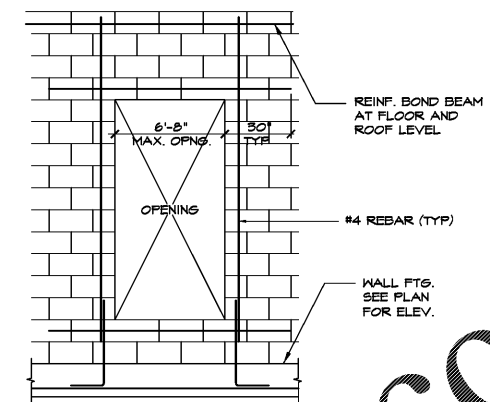
JACK L. BELL, PE
 2875 Abbottwell Drive
 Alpharetta, GA 30022
 Ph: (404) 966-6672
 jlb@bellwell.com



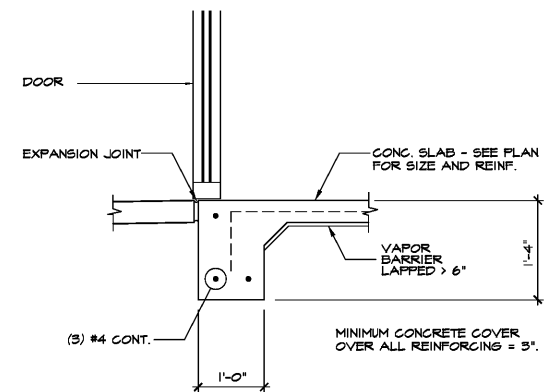
CONTINUOUS WALL FOOTING SECTION 1



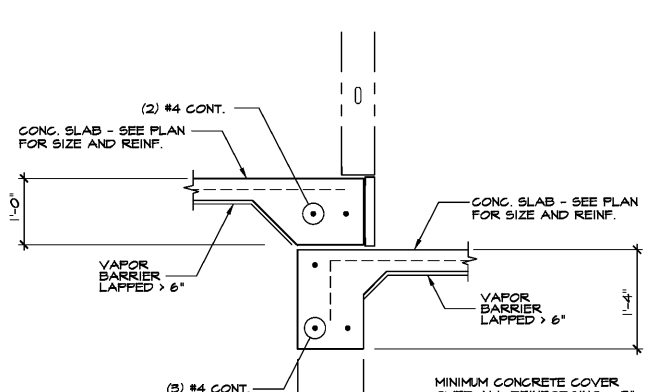
CONTINUOUS WALL FOOTING SECTION 2



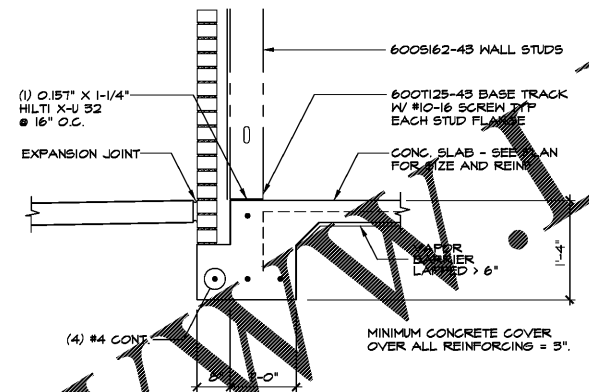
WALL REINFORCEMENT AT MASONRY OPENINGS 3



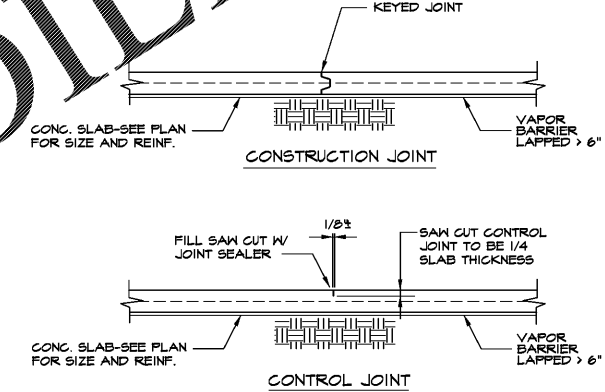
SLAB TURN-DOWN AT GLAZING 4



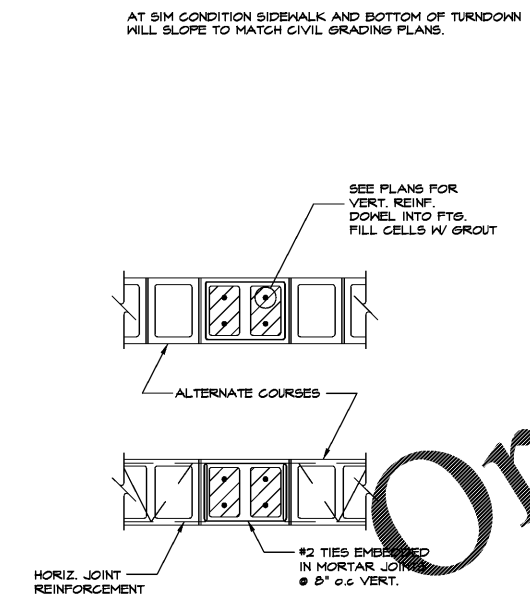
SLAB TURN-DOWN AT PARTITION 5



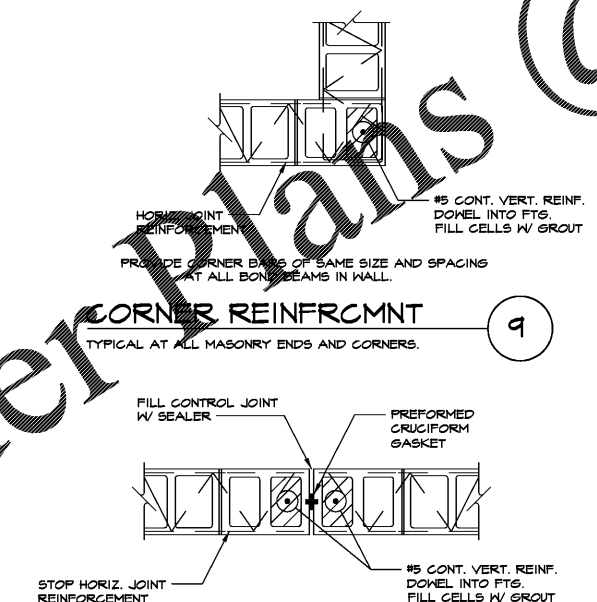
SLAB TURN-DOWN 6



CONSTRUCTION/CONTROL JOINT 7



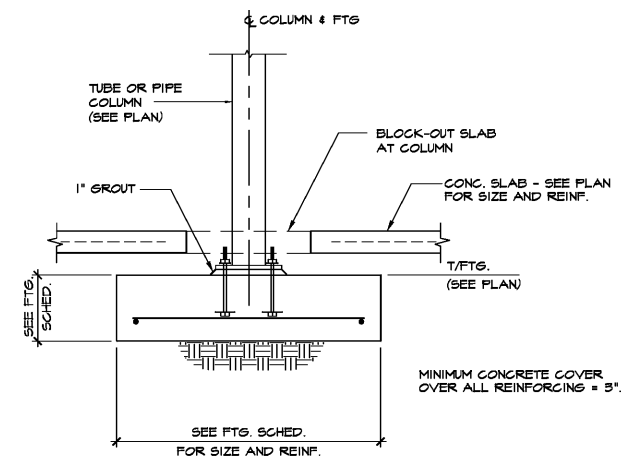
PILASTER REINFORCEMENT 8



CORNER REINFORCEMENT 9

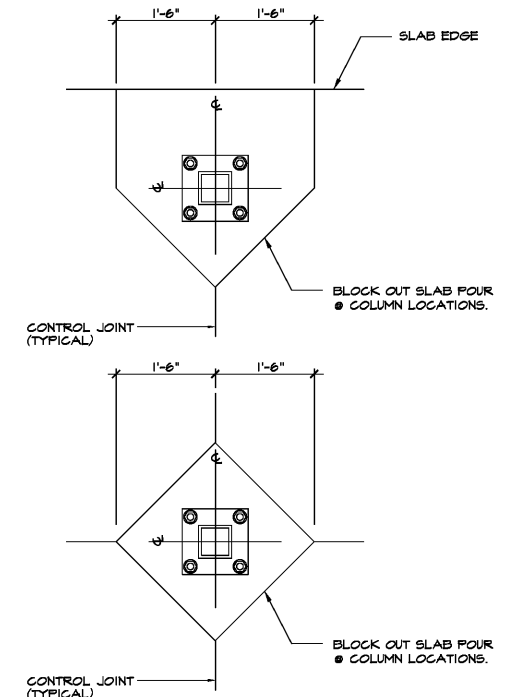
- DISTANCE BETWEEN JOINTS SHOULD NOT EXCEED THE LESSER OF: LENGTH TO HEIGHT RATIO - 1.5 OR 25 FEET (MAX)
- PROVIDE JOINTS AT FOLLOWING LOCATIONS:
 - CHANGES IN WALL HEIGHT
 - CHANGES IN WALL THICKNESS
 - MOVEMENT JOINTS IN FOUNDATIONS, FLOORS, AND ROOFS
 - NEAR ONE OR BOTH SIDES OF DOOR AND WINDOW OPENINGS
 - ADJACENT TO CORNERS OF WALLS OR INTERSECTIONS

MASONRY CONTROL JOINT 10



COLUMN / SPREAD FOOTING SECTION 11

NOTE: SEE DETAIL S-1 FOR BASEPLATE AND ANCHOR BOLTS



SLAB BLOCK-OUT @ COLUMNS 12

THIS DRAWING IS THE PROPERTY OF MAXDESIGN GROUP AND IS NOT TO BE REPRODUCED IN WHOLE OR IN PART. IT IS NOT TO BE USED ON ANOTHER PROJECT AND SHALL BE RETURNED UPON REQUEST.

PROFESSIONAL SEAL:

PROJECT TITLE:
BUTLER CREEK RETAIL BUILDING
 ACWORTH, GEORGIA

PROJECT INFO:
 3330 COBB PARKWAY NW
 ACWORTH, GA 30144

PRINT RECORD

Description	Date
ISSUED FOR PERMIT	01.17.20

REVISION

No.	Description	Date

FOUNDATION DETAILS

Project number: D19-127
 Date: 12/18/2019
 Drawn by: JLB
 Checked by: RM

S-301

Scale: As indicated

ISSUED FOR CONSTRUCTION

Order Plans @

WWW.DILING.COM