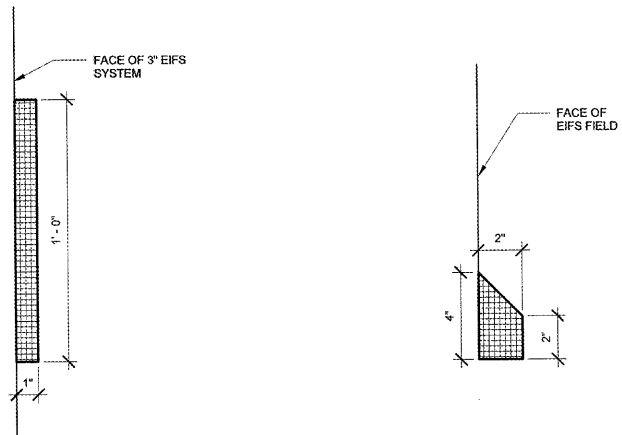
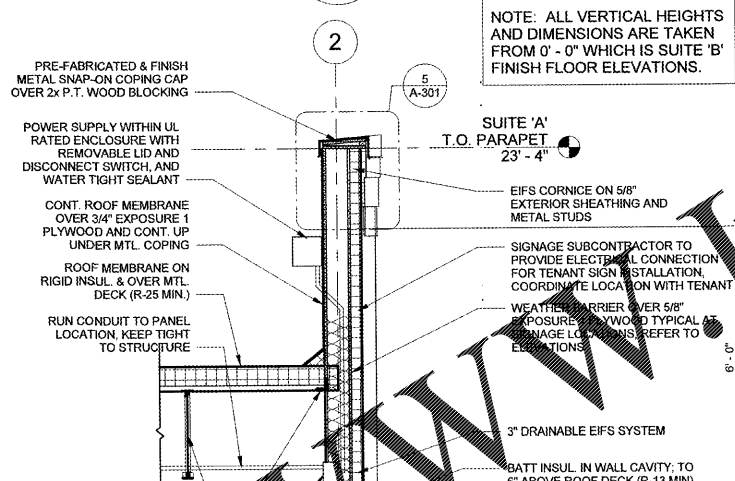


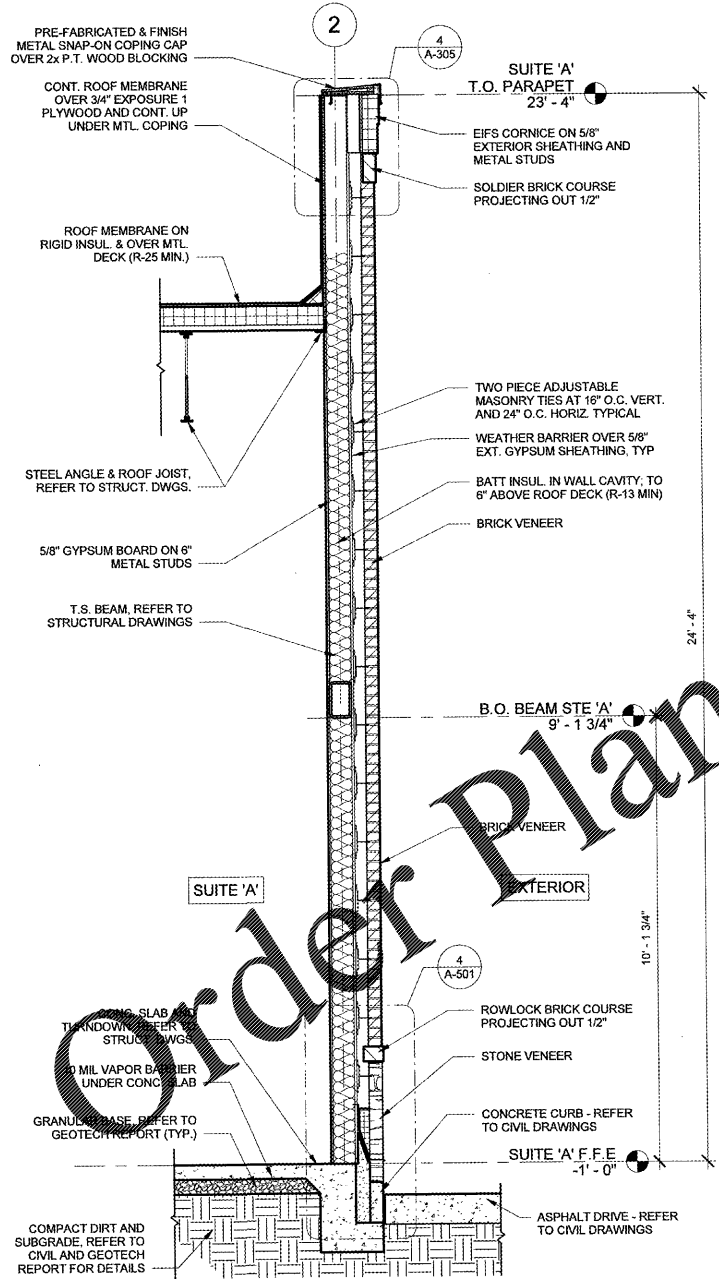
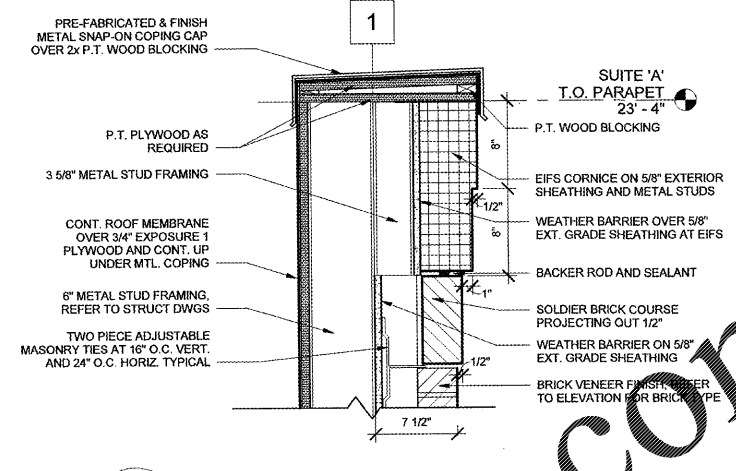
**6 EIFS ACCENT DETAIL**  
A-305 SCALE: 3" = 1'-0"



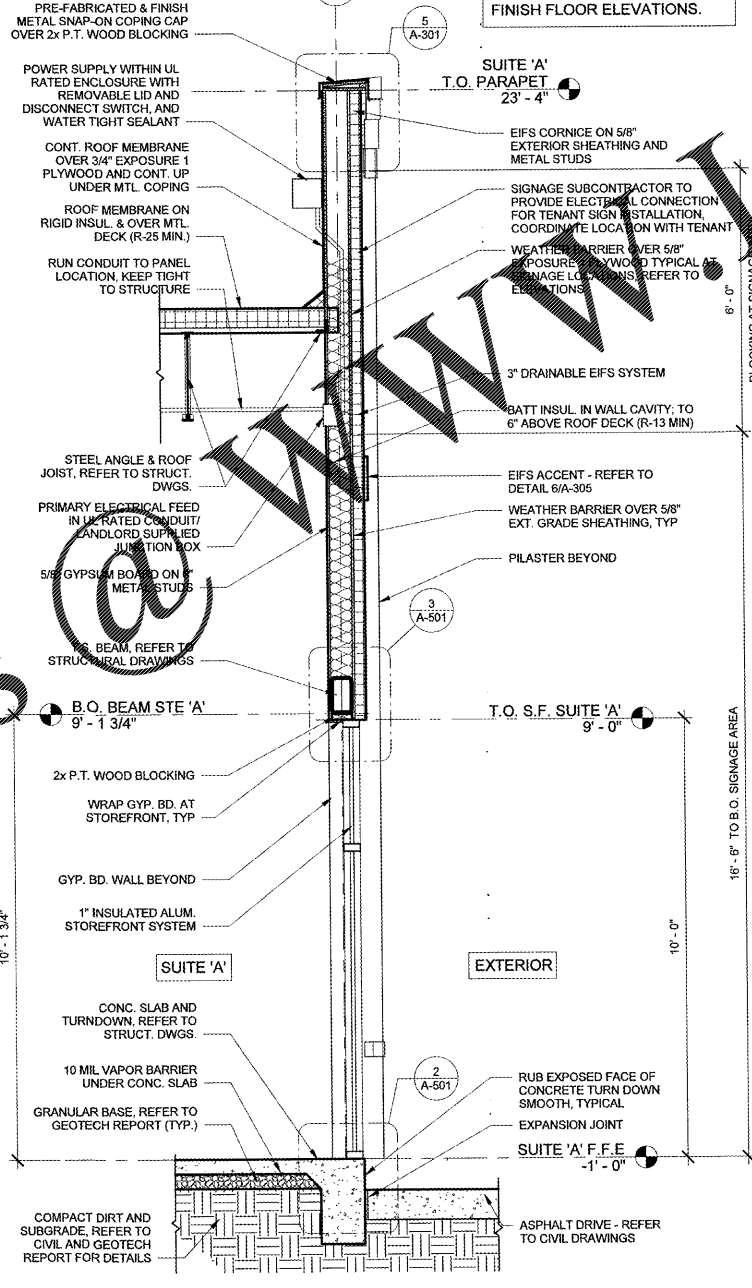
**5 EIFS BUMPOUT DETAIL**  
A-305 SCALE: 3" = 1'-0"



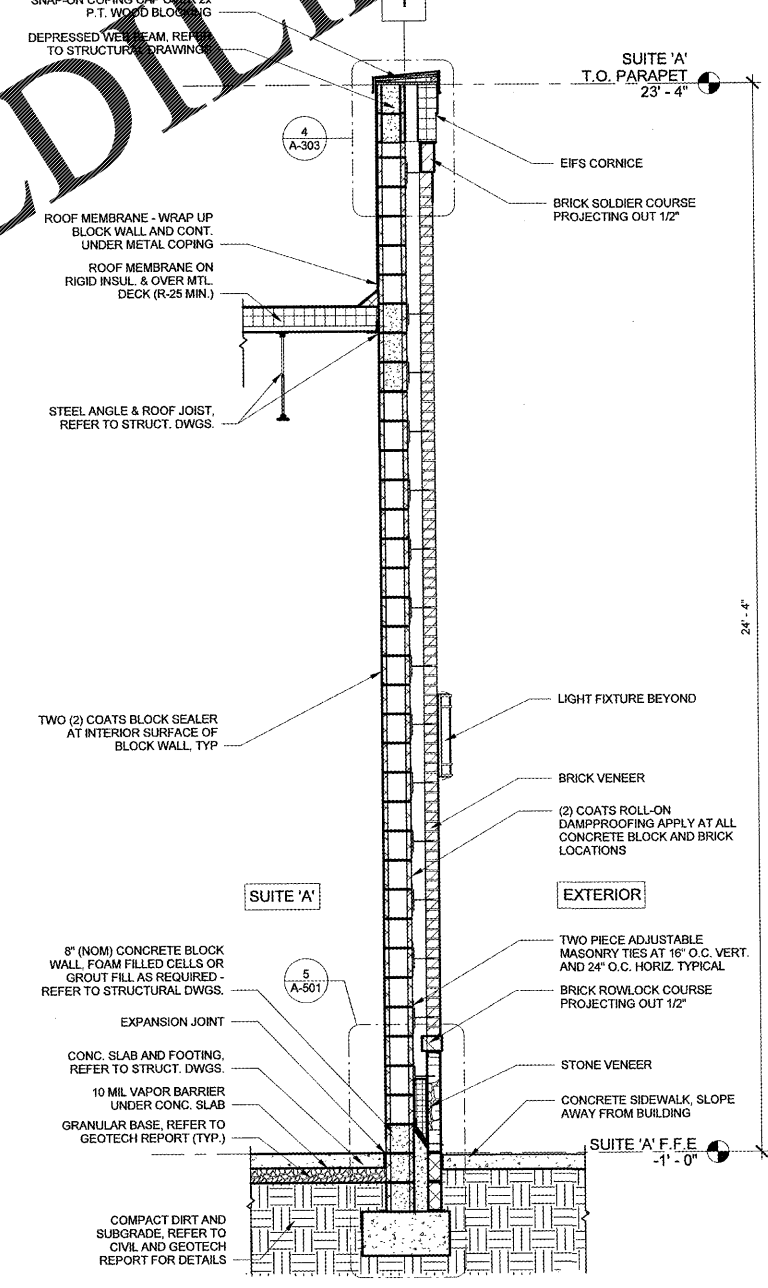
**4 DETAIL AT WEST PLASTER CORNICE**  
A-305 SCALE: 1 1/2" = 1'-0"



**3 WEST PILASTER AT STUD WALL**  
A-305 SCALE: 1/2" = 1'-0"

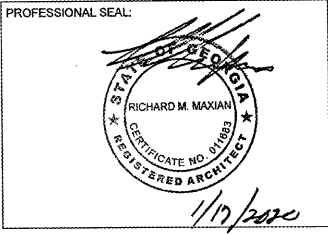


**2 SECTION AT WEST STOREFRONT**  
A-305 SCALE: 1/2" = 1'-0"



**1 WEST PILASTER SECTION AT BLOCK WALL**  
A-305 SCALE: 1/2" = 1'-0"

THIS DRAWING IS THE PROPERTY OF MAXDESIGN GROUP, AND IS NOT TO BE REPRODUCED IN WHOLE OR IN PART. IT IS NOT TO BE USED ON ANOTHER PROJECT AND SHALL BE RETURNED UPON REQUEST.



PROJECT TITLE:  
**BUTLER CREEK RETAIL BUILDING**  
ALBERTVILLE, ALABAMA

PROJECT INFO:  
7200 US HWY 431  
ALBERTVILLE, AL

PRINT RECORD

Description	Date
ISSUED FOR PERMIT	10.01.2019
REVISION 1 - OWNER COMMENTS	10.25.2019

REVISION

No.	Description	Date

**EXTERIOR WALL SECTIONS - SUITE 'A'**

Project number	D19-127
Date	01/17/2020
Drawn by	DKA
Checked by	RMM

**A-305**  
Scale: As indicated  
ISSUED FOR CONSTRUCTION

Order Plans @ WWW.LDLINE.COM