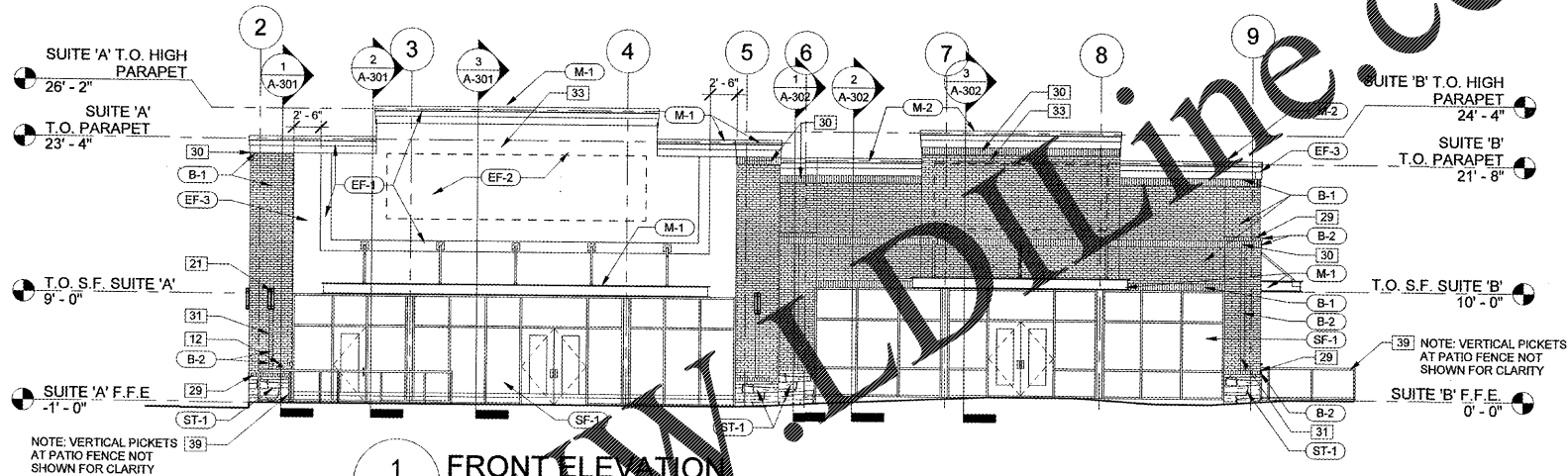


MARK	DESCRIPTION
1	IF D.C. LOCATION, VERIFY WITH LOCAL FIRE MARSHALL BEFORE INSTALLATION.
2	CONCRETE SIDEWALK, BROOM FINISH W/ JOINTS @ 5'-0" (MAX.), OR PER PLAN, REFER TO CIVIL FOR WIDTH
3	PRE-FINISHED EMERGENCY SCUPPER TO MATCH DOWNSPOUT
4	PRE-FINISHED 5' x 4' METAL DOWNSPOUT WITH CONDUCTOR HEAD AND CAST IRON BOOT FOR UNDERGROUND TIE-IN TO STORM SEWER. REFER TO CIVIL PLANS AND A-121 FOR SIZING.
5	DRIVE THROUGH WINDOW, MATCH FINISH TO SF-1 - QUIK SERV BI-PARTING FULLY AUTOMATIC WINDOW MODEL BP-4841E
6	4" GREASE TRAP LINE AND STUB-UP, REFER TO PLUMBING DRAWINGS
7	ELECTRICAL METER BANK AND DISCONNECT, PAINT TO MATCH EXTERIOR FINISH - REFER TO ELECTRICAL DRAWINGS
8	FIRE ALARM BELL MOUNTED 9'-0" A.F.F.
9	FIRE RISER AND FIRE ALARM PANEL, REFER TO SHEET LS-101 AND ELECTRICAL DRAWINGS
10	WALL MOUNTED FIRE RISER ROOM HEATER, REFER TO MECHANICAL DRAWINGS
11	NATURAL GAS METERS, PAINTED TO MATCH ADJACENT EXTERIOR FINISH IF GAS COMPANY ALLOWS
12	FREEZE PROOF HOSE BIBB, REFER TO PLUMBING DRAWINGS
13	DASHED LINE REPRESENTS CANOPY OR AWNING ABOVE, REFER TO ELEVATIONS & WALL SECTIONS FOR ADDITIONAL INFO
14	TUBE STEEL COLUMN, REFER TO STRUCTURAL DRAWINGS
15	4" THICK SEALED CONCRETE SLAB, REFER TO STRUCTURAL DRAWINGS
16	(1) 4" SANITARY STUB-UP FOR PLUMBING (CAPPED)
17	CONTROL JOINT, REFER TO DETAIL 6/A401
18	(2) 1" TELCO/CABLE CONDUIT, REFER TO ELECTRICAL DRAWINGS
19	600 AMP ELECTRICAL PANEL AND SUB PANELS WITH TELEPHONE BOARD ATTACHED TO WALL, REFER TO ELECTRICAL DRAWINGS
20	400 AMP ELECTRICAL PANEL AND SUB PANEL WITH TELEPHONE BOARD ATTACHED TO WALL, REFER TO ELECTRICAL DRAWINGS
21	ARCHITECTURAL LIGHT FIXTURE, REFER TO ELECTRICAL DRAWINGS
22	PERSONNEL LIGHT FIXTURE, CENTER ABOVE DOOR - REFER TO ELECTRICAL DRAWINGS
23	WALL MOUNTED SECURITY LIGHT FIXTURE, REFER TO ELECTRICAL DRAWINGS
24	DASHED LINE INDICATES ROOF LINE BEYOND
25	ROOF TOP UNIT, REFER TO MECHANICAL DRAWINGS AND SHEET A-121
26	EIFS ACCENT - REFER TO DETAIL 6/A-305
27	EIFS BUMP OUT - REFER TO DETAIL 5/A-305

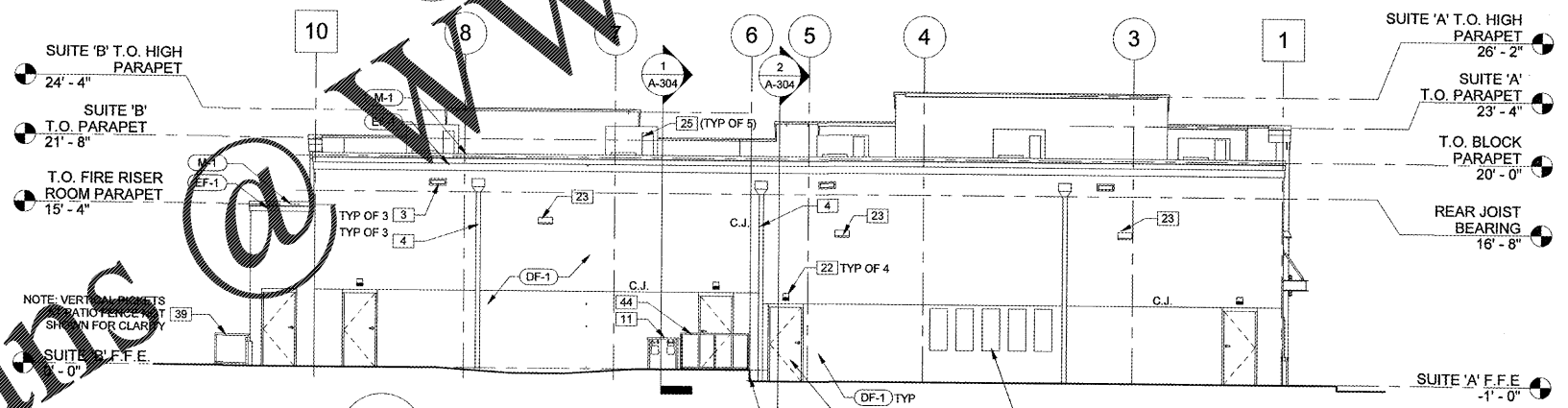
MARK	DESCRIPTION
28	EXPANSION JOINT, REFER TO DETAIL 6/A-401
29	BRICK ROWLOCK COURSE
30	BRICK SOLDIER COURSE
31	BRICK STACK COURSE REVEAL - 12" DEPTH
32	PRE-FABRICATED ALUMINUM AWNING
33	DASHED LINE INDICATES SIGNAGE AREA - PROVIDE 5/8" EXP. 1 PLYWOOD AT THIS AREA. REFER TO WALL SECTIONS FOR HEIGHT DIMENSIONS, CENTER ABOVE CANOPY/STOREFRONT
34	EIFS REVEAL, REFER TO DETAILS 7 AND 13/A-401
35	DRIVE THROUGH KIOSK, G.C. TO COORDINATE LOCATION WITH TENANT
36	LANDSCAPE AREA, REFER TO CIVIL/LANDSCAPE DRAWINGS
37	CONCRETE CURB, REFER TO CIVIL DRAWINGS
38	LIGHTED DIRECTIONAL DRIVE THROUGH SIGNAGE, COORDINATE LOCATION WITH TENANT - REFER TO CIVIL AND ELECTRICAL DRAWINGS
39	PRE-FINISHED ALUMINUM PATIO FENCE WITH 36" GATE, REFER TO SHEET A-306 FOR RAIL ELEVATIONS AND DETAILS, G.C. TO VERIFY LOCATION AND LAYOUT PRIOR TO INSTALLATION
40	2" DOMESTIC WATER LINE INTO BUILDING - REFER TO CIVIL DRAWINGS
41	6" FIRE RISER LINE INTO BUILDING - REFER TO CIVIL DRAWINGS
42	RELOCATED LIGHT POLE, RUN CONDUIT TO NEW LOCATION TO CONNECT TO EXISTING WIRING. REFER TO CIVIL AND ELECTRICAL DRAWINGS
44	PAINTED STEEL GUARDRAIL, REFER TO SHEET A-306 FOR RAIL ELEVATIONS AND DETAILS
45	UNDER PAVEMENT GREASE TRAPS, REFER TO CIVIL DRAWINGS
46	36" WIDE PRE-FINISHED ALUMINUM FENCE GATE PER MANUFACTURER, G.C. TO VERIFY LOCATION AND LAYOUT PRIOR TO INSTALLATION.

MARK	CATEGORY	MANUF.	DESCRIPTION
B-1	MODULAR BRICK	GENERAL SHALE	EXTERIOR BRICK, COLOR: 'ST. LOUIS' WIARGOS 'CRIMSON RED' MORTAR, TOOLED JOINTS
B-2	MODULAR BRICK	GENERAL SHALE	EXTERIOR BRICK, COLOR: 'L'WM CORTEZ' WIARGOS 'CLAY PINK' MORTAR, TOOLED JOINTS
DF-1	DFS	DRYVIT	DFS ON BLOCK WALL - STRIKE JOINTS SMOOTH PRIOR TO INSTALLATION, COLOR TO MATCH SW 7036 'ACCESSIBLE BEIGE'
EF-1	EIFS OUTSULATION PLUS MD	DRYVIT	FINISH SANDBLAST, COLOR TO MATCH: SW 7049 'NUANCE'
EF-2	EIFS OUTSULATION PLUS MD	DRYVIT	FINISH SANDBLAST, COLOR TO MATCH: SW 7036 'ACCESSIBLE BEIGE'
EF-3	EIFS OUTSULATION PLUS MD	DRYVIT	FINISH SANDBLAST, COLOR TO MATCH: SW 7052 'GRAY AREA'
M-1	METAL COPING	PAC-CLAD	COLOR: 'DARK BRONZE'
M-2	METAL COPING	PAC-CLAD	COLOR: 'WEATHERED ZINC'
P-1	PAINT	SHERWIN WILLIAMS	ENAMEL PAINT, COLOR TO MATCH SW 7052 'GRAY AREA'
SF-1	STOREFRONT SYSTEM	YKK	COLOR: 'CLEAR ANODIZED ALUMINUM'
ST-1	STONE	ECHOLON	WATERFORD, COLOR: 'AVONDALE'

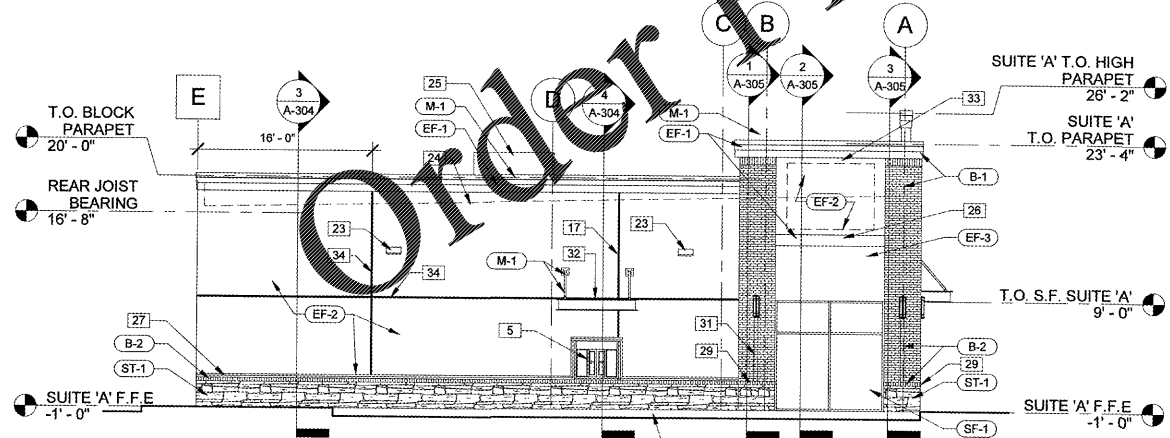
NOTE: ALL VERTICAL HEIGHTS AND DIMENSIONS ARE TAKEN FROM 0' - 0" WHICH IS SUITE 'B' FINISH FLOOR ELEVATIONS.



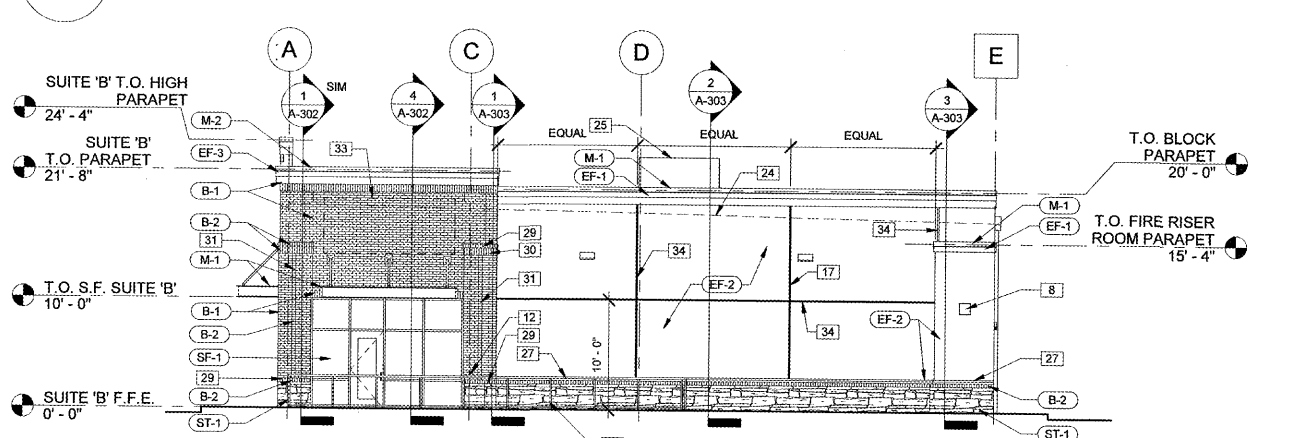
1 FRONT ELEVATION
A-201 SCALE: 1/8" = 1'-0"



2 REAR ELEVATION
A-201 SCALE: 1/8" = 1'-0"

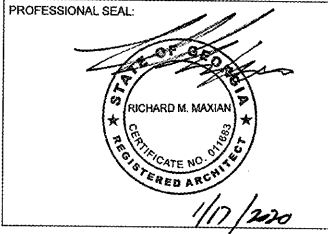


4 WEST ELEVATION
A-201 SCALE: 1/8" = 1'-0"



3 EAST ELEVATION
A-201 SCALE: 1/8" = 1'-0"

THIS DRAWING IS THE PROPERTY OF MAXDESIGN GROUP, AND IS NOT TO BE REPRODUCED IN WHOLE OR IN PART. IT IS NOT TO BE USED ON ANOTHER PROJECT AND SHALL BE RETURNED UPON REQUEST.



PROJECT TITLE:
BUTLER CREEK RETAIL BUILDING
ACWORTH, GEORGIA

PROJECT INFO:
3330 COBB PARKWAY NW
ACWORTH, GA 30144

PRINT RECORD	
Description	Date
ISSUED FOR PERMIT	01/17/2020

REVISION		
No.	Description	Date

EXTERIOR BUILDING ELEVATIONS

Project number: D19-127
Date: 01/17/2020
Drawn by: DKA
Checked by: RMM

A-201

Scale: 1/8" = 1'-0"

ISSUED FOR CONSTRUCTION