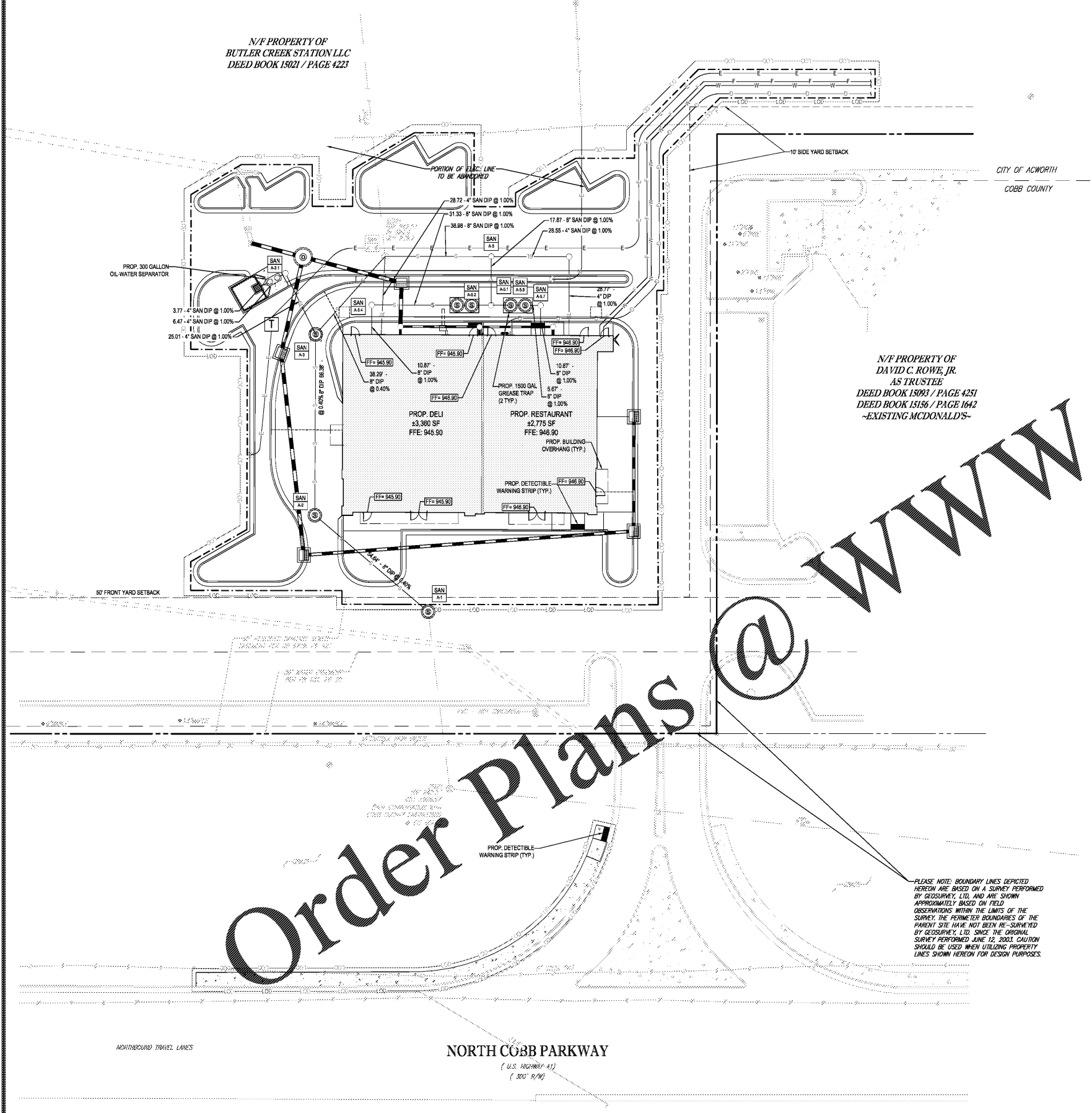


N/F PROPERTY OF  
BUTLER CREEK STATION LLC  
DEED BOOK 15021 / PAGE 4223

N/F PROPERTY OF  
DAVID C. ROWE, JR.  
AS TRUSTEE  
DEED BOOK 15093 / PAGE 4251  
DEED BOOK 15156 / PAGE 1642  
-EXISTING MCDONALD'S-



**SANITARY STRUCTURE SCHEDULE**

NAME	TYPE	RIM ELEV. (FT.)	INVERTS
A-1	PROP. DOGHOUSE MANHOLE	945.44	INV IN = 928.85 (8") INV OUT = 928.16 (8")
A-2	PROP. MANHOLE	944.93	INV IN = 928.16 (8") INV OUT = 928.16 (8")
A-3	PROP. MANHOLE	945.06	INV IN = 928.55 (8") INV OUT = 928.89 (8") INV OUT = 928.45 (8")
A-3.1	PROP. CLEANOUT	941.65	INV IN = 938.01 (4") INV OUT = 938.91 (4")
A-3.2	PROP. GREASE TRAP	941.84	INV IN = 938.17 (4") INV OUT = 938.01 (4")
A-3.3	PROP. 30" NYLOPLAST DRAIN BASIN	941.65	INV OUT = 938.21 (4")
A-4	EXIST. SANITARY MANHOLE	942.84	INV IN = 935.91 (4") INV IN = 937.81 (8") INV OUT = 928.70 (8")
A-5	PROP. CLEANOUT	943.88	INV IN = 941.00 (4") INV IN = 937.81 (8") INV OUT = 937.51 (8")
A-5.1	PROP. CLEANOUT	945.65	INV IN = 937.89 (8") INV OUT = 937.79 (8")
A-5.2	PROP. GREASE TRAP (OUT)	945.54	INV IN = 937.89 (8") INV OUT = 938.02 (8")
A-5.3	PROP. GREASE TRAP (IN)	945.47	INV IN = 938.12 (8") INV OUT = 938.02 (8")
A-5.4	PROP. CLEANOUT	945.88	INV IN = 938.12 (8") INV OUT = 938.02 (8")
A-5.5	PROP. GREASE TRAP (OUT)	945.75	INV IN = 941.53 (8") INV OUT = 941.53 (8")
A-5.6	PROP. GREASE TRAP (IN)	945.88	INV IN = 941.53 (8") INV OUT = 941.53 (8")
A-5.7	PROP. CLEANOUT	945.95	INV IN = 941.79 (8") INV OUT = 941.69 (8")
A-6	PROP. CLEANOUT	944.98	INV IN = 941.38 (4") INV OUT = 941.28 (4")

**SANITARY PIPE SCHEDULE**

FROM	TO	FROM INV	TO INV	PIPE LENGTH	SLOPE (%)	DIAMETER (IN.)	MATERIAL
A-6	A-5	941.29	941.00	28.95	1.00%	4"	Ductile Iron
A-5.7	A-5.5	941.69	941.53	5.67	1.00%	8"	Ductile Iron
A-5.6	A-5.5	941.53	941.53	5.33	1.87%	8"	Ductile Iron
A-5.5	A-5.1	941.53	941.48	7.17	1.00%	8"	Ductile Iron
A-5.4	A-5.3	938.42	938.12	31.33	1.00%	8"	Ductile Iron
A-5.3	A-5.2	938.02	937.99	5.33	1.00%	8"	Ductile Iron
A-5.2	A-5.1	937.89	937.89	7.17	1.00%	8"	Ductile Iron
A-5.1	A-5	937.79	937.61	17.87	1.00%	8"	Ductile Iron
A-5	A-4	937.51	937.12	38.98	1.00%	8"	Ductile Iron
A-4	A-3	928.70	928.55	38.29	1.00%	8"	Ductile Iron
A-3.3	A-3.2	938.21	938.17	3.33	1.00%	8"	Ductile Iron
A-3.2	A-3.1	938.01	938.01	6.4	1.00%	8"	Ductile Iron
A-3.1	A-3	935.91	935.66	1.01	1.00%	4"	Ductile Iron
A-3	A-2	928.45	928.16	28.95	1.00%	8"	Ductile Iron
A-2	A-1	928.16	928.16	28.95	0.40%	8"	Ductile Iron
BUILDING A-3.4	A-3.4	938.04	938.04	10.87	1.00%	8"	Ductile Iron
BUILDING A-5.8	A-5.8	935.91	935.91	28.72	1.00%	4"	Ductile Iron
BUILDING A-5.9	A-5.9	941.79	941.79	10.87	1.00%	8"	Ductile Iron
BUILDING A-6	A-6	941.87	941.38	28.77	1.00%	4"	Ductile Iron

**SITE SPECIFIC NOTES**

- THE SITE CONTRACTOR SHALL COORDINATE SERVICE ROUTING OF ALL GAS, TELEPHONE, AND ELECTRICAL LINES WITH THE APPROPRIATE UTILITY COMPANY. ALL CONSTRUCTION MUST COMPLY WITH EACH UTILITY'S STANDARDS AND SPECIFICATIONS AND NOT INTERFERE WITH TREE PLANTING SITES OR EXISTING TREES TO BE PRESERVED.

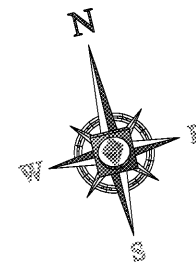
**UTILITY LEGEND**

EXISTING NOTE	TYPICAL NOTE TEXT	PROPOSED NOTE
	SANITARY LABEL	
	STORM LABEL	
	SANITARY SEWER LATERAL	SL
	UNDERGROUND WATER LINE	W
	UNDERGROUND ELECTRIC LINE	E
	UNDERGROUND GAS LINE	G
	OVERHEAD WIRE	OH
	UNDERGROUND TELEPHONE LINE	T
	UNDERGROUND CABLE LINE	C
	STORM SEWER	
	SANITARY SEWER MAIN	S
	HYDRANT	
	SANITARY MANHOLE	
	STORM MANHOLE	
	WATER METER	
	WATER VALVE	
	GAS VALVE	
	GAS METER	
	TYPICAL END SECTION	
	HEADWALL OR ENDWALL	
	YARD INLET	
	CURB INLET	
	CLEAN OUT	
	ELECTRIC MANHOLE	
	TELEPHONE MANHOLE	
	ELECTRIC BOX	
	ELECTRIC PEDESTAL	
	MONITORING WELL	
	TEST PIT	

**Order Plans @**

**WWW.LDILLINE.COM**

PLEASE NOTE: BOUNDARY LINES DEPICTED HEREON ARE BASED ON A SURVEY PERFORMED BY GEOSURVEY, LTD. AND ARE SHOWN APPROXIMATELY BASED ON FIELD OBSERVATIONS WITHIN THE LIMITS OF THE SURVEY. THE PERMETER BOUNDARIES OF THE PARENT SITE HAVE NOT BEEN RE-SURVEYED BY GEOSURVEY, LTD. SINCE THE ORIGINAL SURVEY PERFORMED JUNE 12, 2003. CAUTION SHOULD BE USED WHEN UTILIZING PROPERTY LINES SHOWN HEREON FOR DESIGN PURPOSES.



**BOHLER ENGINEERING**  
SITE CIVIL AND CONSULTING ENGINEERING  
LAND SURVEYING  
PROGRAM MANAGEMENT  
LAND ACQUISITION  
SUSTAINABLE DESIGN  
PERMITTING SERVICES  
TRANSPORTATION SERVICES

**REVISIONS**

REV	DATE	COMMENT	DRAWN BY

**811**  
Know what's below.  
Call before you dig.  
ALWAYS CALL 811  
It's fast. It's free. It's the law.

**ISSUED FOR MUNICIPAL & AGENCY REVIEW & APPROVAL**

PROJECT No: GA160000  
DRAWN BY: BM  
CHECKED BY: BB/MC  
DATE: 01/10/2020  
CAD I.D.: CB0

**SITE DEVELOPMENT PLAN**  
FOR  
**PHILLIPS EDISON & COMPANY**  
PROPOSED RETAIL BUILDING  
3330 COBB PKWY NW  
COBB COUNTY  
ACWORTH, GA

**BOHLER ENGINEERING**  
12825 WORLDGATE DRIVE, SUITE 700  
HERNDON, VIRGINIA 20170  
Phone: (703) 709-9500  
Fax: (703) 709-9501  
VA@BohlerEng.com

**REGISTERED PROFESSIONAL ENGINEER**  
No. PE043191  
**BRETT A. BUCKLAND**

SHEET TITLE:  
**SANITARY SEWER PLAN**  
SHEET NUMBER:  
**C-502**  
REVISION 0 - 01/10/2020