

BUTLER CREEK RETAIL BUILDING

3330 COBB PARKWAY NW
ACWORTH, GA 30144

DRAWING INDEX

GENERAL	
SHEET	TITLE
G-001	COVER SHEET
G-002	GENERAL NOTES AND ABBREVIATIONS
G-003	WALL TYPES
LS-101	LIFE SAFETY PLAN

ARCHITECTURAL	
SHEET	TITLE
A-100	ARCHITECTURAL SITE PLAN
A-101	BUILDING FLOOR PLAN
A-102	DIMENSIONED FLOOR PLAN
A-111	REFLECTED CEILING PLAN
A-121	ROOF PLAN
A-201	EXTERIOR BUILDING ELEVATIONS
A-301	EXTERIOR WALL SECTIONS - SUITE 'A'
A-302	EXTERIOR WALL SECTIONS - SUITE 'B'
A-303	EXTERIOR WALL SECTIONS AT SUITE 'B' CONCRETE BLOCK WALLS
A-304	EXTERIOR WALL SECTIONS AT CONCRETE BLOCK WALLS
A-305	EXTERIOR WALL SECTIONS - SUITE 'A'
A-306	INTERIOR WALL SECTIONS AND RAIL DETAILS
A-401	PLAN DETAILS
A-402	DOOR ENCLOSURE PLAN AND DETAILS
A-501	SECTION DETAILS
A-502	SECTION DETAILS
A-601	FLOOR TYPES, SCHEDULES, AND DETAILS
A-602	WALL TYPES

STRUCTURAL	
SHEET	TITLE
S-100	STRUCTURAL NOTES
S-101	FOUNDATION PLAN
S-201	ROOF FRAMING PLAN
S-301	FOUNDATION DETAILS
S-401	FRAMING DETAILS
S-402	FRAMING DETAILS
S-403	FRAMING DETAILS

MECHANICAL	
SHEET	TITLE
M-101	MECHANICAL FLOOR PLAN

PLUMBING	
SHEET	TITLE
P-101	PLUMBING FLOOR PLAN, NOTES AND SPECIFICATIONS

ELECTRICAL	
SHEET	TITLE
E-001	ELECTRICAL LEGEND
E-101	ELECTRICAL FLOOR PLAN
E-201	ELECTRICAL SCHEDULES

- SMOKING IS PROHIBITED IN ALL ENCLOSED PUBLIC PLACES AND IN ALL ENCLOSED AREAS WITHIN PLACES OF EMPLOYMENT IN ACCORDANCE WITH COUNTY CLEAN INDOOR AIR ORDINANCE.
- CONTRACTOR SHALL PERMANENTLY IDENTIFY ALL FIRE RESISTANCE-RATED WALL (AND CORRESPONDING FIRE-RESISTANT RATING) INCLUDING FIRE BARRIER WALLS, SMALL BARRIER WALLS, FIRE PARTITIONS, FIRE WALL AND SHAFT ENCLOSURES WITHER BY INSTALLING SIGNS OR STENCILING IN CONCEALED SPACES THE FOLLOWING:
ONE (1) HOUR FIRE AND SMOKE BARRIER ALL OPENINGS IDENTIFICATION SHALL BE SPACED NO MORE THAN TWELVE (12) FEET ON CENTER WITH A MINIMUM LETTER SIZE OF TWO (2) INCHES IN HEIGHT ON A CONTRASTING BACKGROUND.
- THE U-FACTOR AND SHGC FOR EACH GLAZED FENESTRATION PRODUCT (DOOR, WINDOW, SKYLIGHT) SHALL BE DETERMINED IN ACCORDANCE WITH NATIONAL FENESTRATION RATING COUNCIL NFRC 200-1. PROCEDURE FOR DETERMINING FENESTRATION PRODUCT SOLAR HEAT GAIN COEFFICIENTS AND VISIBLE TRANSMITTANCE AT NORMAL INCIDENCE.
- CONTACT THE FIRE OFFICE INSPECTION REQUEST LINE FOR INSPECTIONS.
- SIGNS ARE NOT APPROVED WITHIN THE SCOPE OF THIS BUILDING PERMIT. A SEPARATE SIGN LOCATION PERMIT IS REQUIRED FOR EACH SIGN.
- CIVIL DRAWINGS AND LANDSCAPE DRAWINGS PROVIDED BY OTHERS.
- FIRE ALARM SYSTEM TO BE PROVIDED IN ACCORDANCE WITH NFPA 72, 2012 EDITION.
- FIRE SPRINKLER SYSTEM TO BE INSTALLED IN ACCORDANCE WITH THE 2012 EDITION OF THE NFPA 13.

CODES/STANDARDS & CLASSIFICATIONS

COBB COUNTY DEVELOPMENT & INSPECTIONS, COBB COUNTY FIRE MARSHAL, AND STATE OF GEORGIA CODE REQUIREMENTS INCLUDING REVISIONS, AMENDMENTS & APPENDICES TO THE FOLLOWING CODES:

- 2018 INTERNATIONAL BUILDING CODE WITH GEORGIA AMENDMENTS
- 2018 INTERNATIONAL PLUMBING CODE WITH GEORGIA AMENDMENTS
- 2018 INTERNATIONAL MECHANICAL CODE WITH GEORGIA AMENDMENTS
- 2018 INTERNATIONAL FUEL GAS CODE WITH GEORGIA AMENDMENTS
- 2015 INTERNATIONAL ENERGY CONSERVATION CODE WITH GEORGIA SUPPLEMENTS AND AMENDMENTS
- 2018 INTERNATIONAL FIRE PREVENTION CODE WITH GEORGIA AMENDMENTS
- 2017 NATIONAL ELECTRICAL CODE
- 2010 STANDARDS FOR ACCESSIBLE DESIGN
- 2002 NFPA 701 LIFE SAFETY CODE AND CURRENT EDITION OF THE NFPA CODES AND STANDARDS ADOPTED BY THE STATE FIRE MARSHAL

JURISDICTION

COBB COUNTY DEVELOPMENT & INSPECTIONS
1150 POWDER SPRINGS ST
SUITE 400
MARIETTA, GEORGIA 30064
T: 770.528.2051

COBB COUNTY FIRE MARSHAL
1595 COBB SERVICES PARKWAY
MARIETTA, GEORGIA 30008
T: 770.528.8000

PROJECT DESCRIPTION

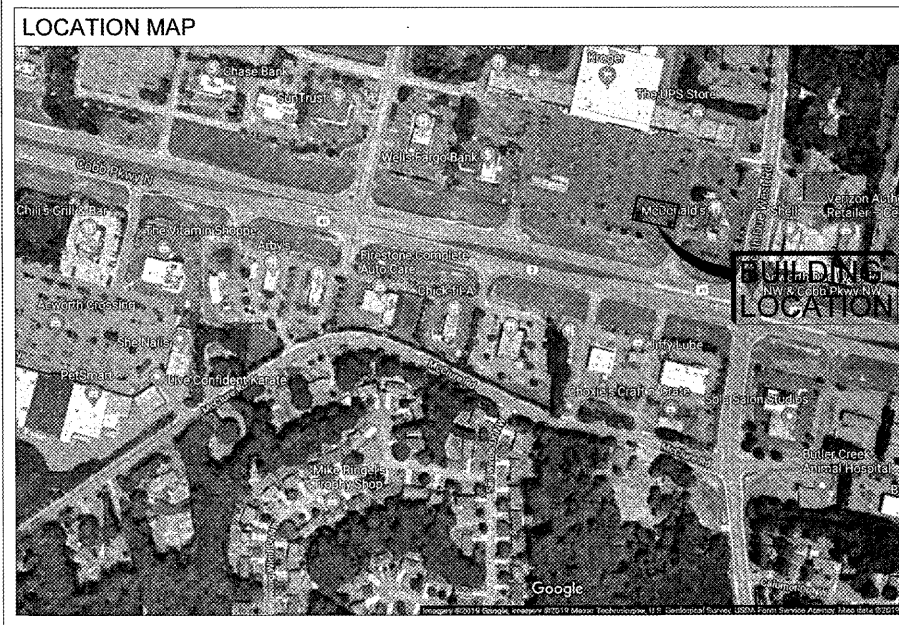
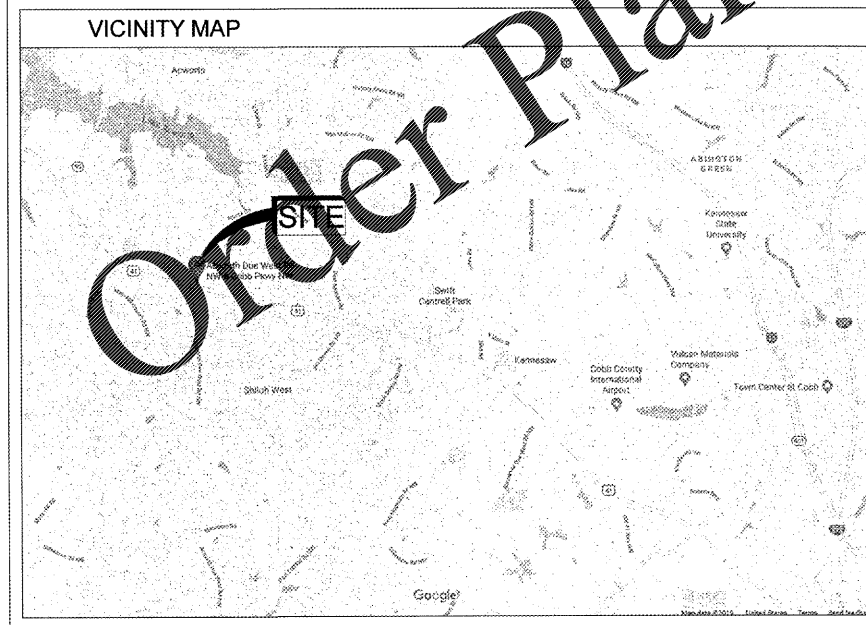
THIS PROJECT IS A NEW RETAIL OUT BUILDING IN AN EXISTING RETAIL CENTER LOT, DESIGNED AS A WARM GRAY SHELL. IT IS A SINGLE STORY BUILDING WITH A BUILDING AREA OF 6,000 SF. THE LOCATION IS AT 3330 COBB PARKWAY NW IN ACWORTH, GA.

REVISION HISTORY

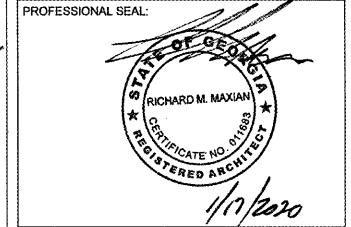
NO.	DATE	DESCRIPTION	SHEETS

PROJECT INFORMATION

NAME OF DEVELOPMENT:	BUTLER CREEK RETAIL BUILDING
PROJECT ADDRESS:	3330 COBB PARKWAY NW ACWORTH, GA 30144
NAME OF OWNER:	PHILLIPS EDISON & COMPANY
OWNER'S ADDRESS:	11501 NORTHLAKE DRIVE, CINCINNATI, OH 45249
BUILDING AREA:	6,000 SQUARE FEET
NUMBER OF BUILDINGS:	ONE
NUMBER OF STORIES:	ONE
OCCUPANCY CLASSIFICATION:	(M) MERCANTILE
CALCULATED LOAD FOR WATER CLOSETS:	N/A
CALCULATED LOAD FOR LAVATORIES:	N/A
BUILDING CODE HEIGHT LIMIT:	55'-0" HIGHEST PARAPET AT 26'-2" A.F.F.
CONSTRUCTION TYPE:	II-B, SPRINKLERED, ALARMED
GROSS AREA:	6,000 SQUARE FEET
OCCUPANCY LOAD CALCULATIONS:	AREA = 6,000 S.F. MERCANTILE OCCUPANCY 30 S.F. PER PERSON - 6,000 / 30 = 200



THIS DRAWING IS THE PROPERTY OF MAXDESIGN GROUP, AND IS NOT TO BE REPRODUCED IN WHOLE OR IN PART. IT IS RETURNED UPON REQUEST.



PRINT RECORD

Description	Date
ISSUED FOR PERMIT	01/17/2020

REVISION

No.	Description	Date

COVER SHEET

Project number	D19-127
Date	01/17/2020
Drawn by	DKA
Checked by	RMM
G-001	
Scale	

ISSUED FOR CONSTRUCTION