

30 x 42

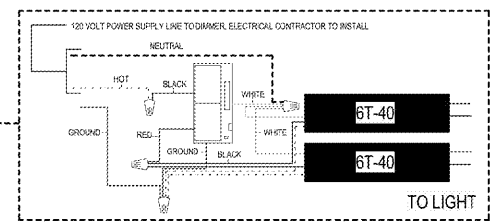
Order Plans @ www.davidrcarter.com

MARK NO.	DESCRIPTION	FINISH	NOTES
WP1	WALL PLUG	BLACK	CONTROLS LED LINEAR PUNTS, NIGHTSTAND LAMPS, FLOOR LAMPS, DESK LAMP
WP2	WALL PLUG	WHITE	
SD1	SMART DIMMER	BLACK	CONTROLS DOWNLIGHTS AND OPTIONAL MIRROR AT ENTRY VESTIBULE
SD2	SMART DIMMER	WHITE	
SKA1	SCENE KEYPAD (A/C)	BLACK	CONTROLS KEYPAD AT ENTRY DOOR - CONTROLS ALL LIGHTING IN ROOM (EXCEPT BATHROOM)
SKA2	SCENE KEYPAD (A/C)	WHITE	
SKB1	SCENE KEYPAD (BATTERY)	BLACK	CONTROLS KEYPAD AT HEADBOARD WALL - CONTROLS ALL LIGHTING IN ROOM (EXCEPT BATHROOM)
SKB2	SCENE KEYPAD (BATTERY)	WHITE	

SYMBOL	DESCRIPTION
[Bluetooth symbol]	BLUETOOTH COMMUNICATION (PRE PROGRAMMED)
[WB symbol]	HAS/WIRE TO POWER SUPPLY LINE
[BR symbol]	BATTERY - INSTALL IN STANDARD J-BOX
[P symbol]	PLUG INTO STANDARD OUTLET

SYMBOL	DESCRIPTION
[LED symbol]	6"X100X300R, 100' H.C. LED TAPE LIGHT, 300K
[LED symbol]	6"X24"X100K 40W DIRECT DIMMABLE POWER SUPPLY
[LED symbol]	6"X170X50H TAPE-TO-SUPPLY LEAD
[LED symbol]	1"X1"X3"X3" EXTRUSION SERIES, B
[LED symbol]	1018R6W4H SPlice BOX

- GENERAL PLAN NOTES**
- ALL RECEPTACLES AND SWITCHES SHALL BE FLUSH MOUNTED FOR ALL AREAS, UNLESS OTHERWISE NOTED.
 - ALL EMERGENCY BATTERY PACKS SHALL BE CONNECTED AHEAD OF THE ROOM LIGHT SWITCH. VERIFY AND COMPLY WITH GOVERNING LAWS, CODES, AND REGULATIONS.
 - EXIT LIGHTING & EMERGENCY LIGHTING TO BE DETERMINED BY ARCHITECT AND ENGINEERS. VERIFY AND COMPLY WITH GOVERNING LAWS, CODES, AND REGULATIONS.
 - COORDINATE LIGHTING FIXTURE LOCATIONS WITH MECHANICAL AND PLUMBING EQUIPMENT TO AVOID INTERFERENCES.
 - VERIFY ALL DOOR SWINGS FOR LOCATION OF ALL LIGHT SWITCHES. ALL LIGHT SWITCHES ARE TO BE INSTALLED ON STRIKE SIDE OF THE DOOR UNLESS SPECIFICALLY NOTED OTHERWISE.
 - SEE MARRIOTT GUESTROOM LIGHTING SPECIFICATIONS SECTION "28-26093-C-Guestroom Dimming Controls" FOR LIGHTING CONTROL EQUIPMENT AND MANUFACTURER CONTACT INFORMATION. THIS INFORMATION CAN BE OBTAINED AT <http://lightingdesign.marriott.com>. COORDINATE WITH THE OWNER.
 - SEE ARCHITECTURAL GUESTROOM DETAILS SHEET FOR STANDARD MOUNTING HEIGHTS FOR SWITCHING, DIMMING AND POWER DEVICES.
 - SEE GUESTROOM SHEETS FOR BATHROOM FIXTURES & DESIGN TO ENSURE SYSTEM TO BE SEPARATE FROM BATHROOM LIGHTING.
 - IN ALL ACCESSIBLE ROOM TYPES, ALL DIMMER CONTROL SWITCHES TO BE LOCATED WITHIN CLEAR MANEUVERING SPACES AND MOUNTING HEIGHTS TO REACH RANGES THAT COMPLY WITH ALL APPLICABLE CODES. ARCHITECT TO VERIFY ALL LOCATIONS ARE COMPLIANT. PREFERRED LOCATION FOR DIMMER CONTROL SWITCH IN GUESTROOM AREA IS ABOVE NIGHTSTAND.



HALO HOME BY EATON - NOTES:

HALO HOME IS A SMART LIGHTING SYSTEM THAT CONNECTS WIRELESSLY VIA BLUETOOTH AND PROVIDES CONTROL OF THE LIGHTING IN THE GUEST ROOM. SCENE KEYPADS ARE USED TO EASILY SET COMFORTABLE ENVIRONMENTS IN THE ROOM. THE DEVICES ARE PREPROGRAMMED AND SHIP CONFIGURED FOR INDIVIDUAL ROOM TYPES. SEE DIMMERS AND LIGHT MIRRORS FOR CORRECT MOUNTING HEIGHTS FOR ROOM TYPE.

INSTALL THE DEVICES IN THE LOCATIONS AS INDICATED ON THIS PLAN. PREPROGRAMMING FOR ANY SPECIFIC ROOM, DIMMERS, PLUGS AND WIRE CONNECTIONS ARE TO BE COMPLETED BY THE ELECTRICAL CONTRACTOR. SWITCHING OF DEVICES WILL MAKE ROOMS NON-FUNCTIONAL. WILL REQUIRE ADDITIONAL PROGRAMMING AND SETUP.

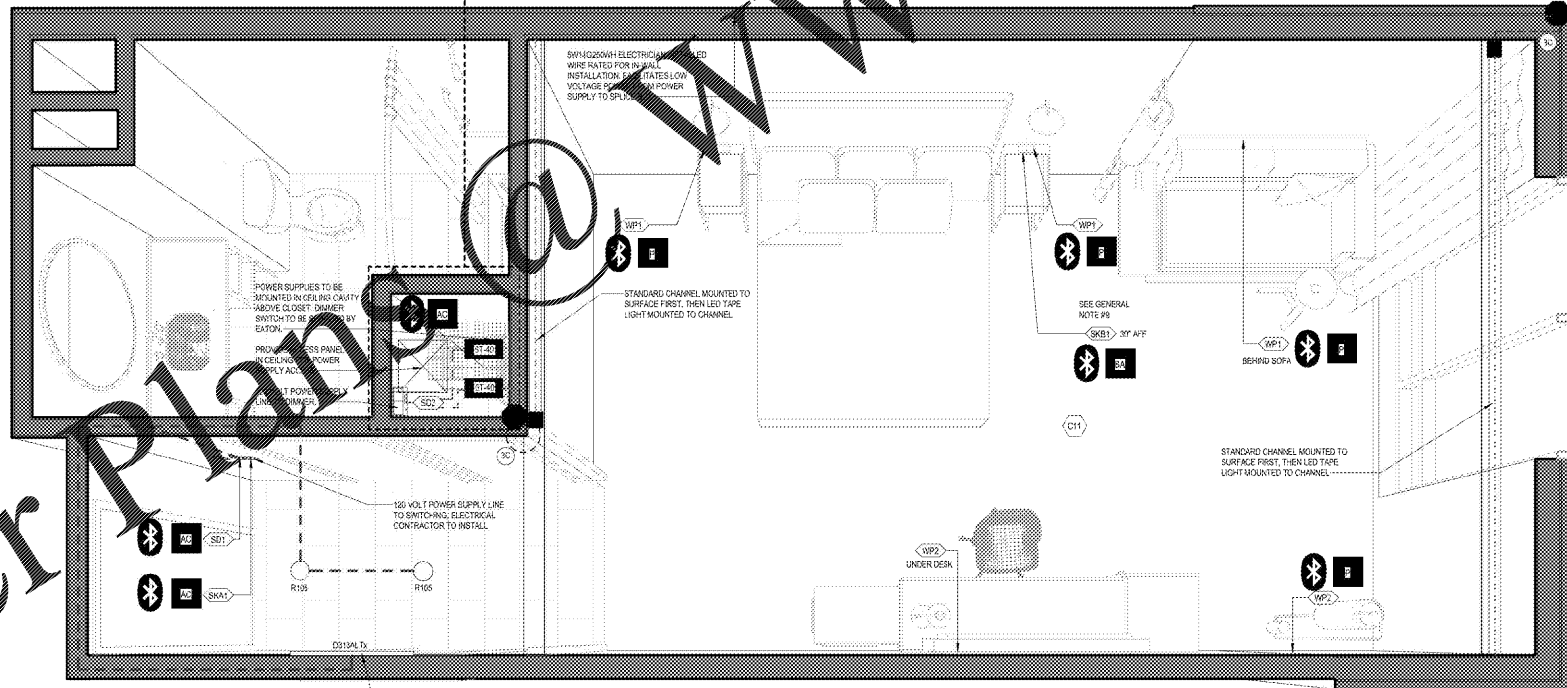
SMART DIMMERS AND PLUGS ARE WIRELESSLY CONNECTED TO THE BLUETOOTH CONTROL AND DIMMING TO THE LIGHT FIXTURES. SCENE KEYPAD'S CONTROLLED BY CEILING LIGHTS AT ENTRY AND MIRROR AT ENTRY AND 2 COVER LIGHTS AT THE KEYPAD (SWA) CONTROLLED BY THE LIGHTS AT THE GUESTROOM (EXCEPT THE BATHROOM) VIA BLUE TOOTH COMMUNICATION. SCENE SETTINGS ARE PRESET.

SCENE KEYPAD (SKB1) AT HEADBOARD CONTROLS ALL LIGHTS IN THE GUESTROOM (EXCEPT THE BATHROOM). 3 SCENE SETTINGS ARE INCLUDED.

SD1 DIMMER IS LOCATED IN THE ENTRY AND IS FUNCTIONING AS THE BLUETOOTH COMMUNICATION DEVICE FOR THE SCENE LIGHTING. THIS DEVICE WILL BE CONTROLLED BY BOTH THE SCENE CONTROLLER AT THE HEADBOARD (SKB1) AND THE ROOM ENTRY (SWA). SD2 DIMMER WILL BE CONTROLLED BY BOTH THE SCENE CONTROLLER AT THE HEADBOARD (SKB1) AND THE ROOM ENTRY (SWA). SD2 DIMMER WILL BE CONTROLLED BY BOTH THE SCENE CONTROLLER AT THE HEADBOARD (SKB1) AND THE ROOM ENTRY (SWA). SD2 DIMMER WILL BE CONTROLLED BY BOTH THE SCENE CONTROLLER AT THE HEADBOARD (SKB1) AND THE ROOM ENTRY (SWA).

HALO HOME SMART DIMMER CARRIES NEUTRAL.

HALO HOME DIMMER REVERT TO LAST DIM STATE IF LOSS OF POWER. LAST DIM STATE SAVED EVERY 15 SECS IN FLASH MEMORY UNLESS DIMMER IS OFF.



ACC. KING LIGHTING CONTROLS DIAGRAM - FOR MARK NO. C11
SCALE:

**COURTYARD by MARRIOTT
NEW HOTEL**
SMYRNA, TENNESSEE
WWW.DAVIDRCARTER.NET
DAVID R. CARTER AND ASSOCIATES

ISSUE DATE 10-18-19
▲ REVISION LOG

PROJECT 00751